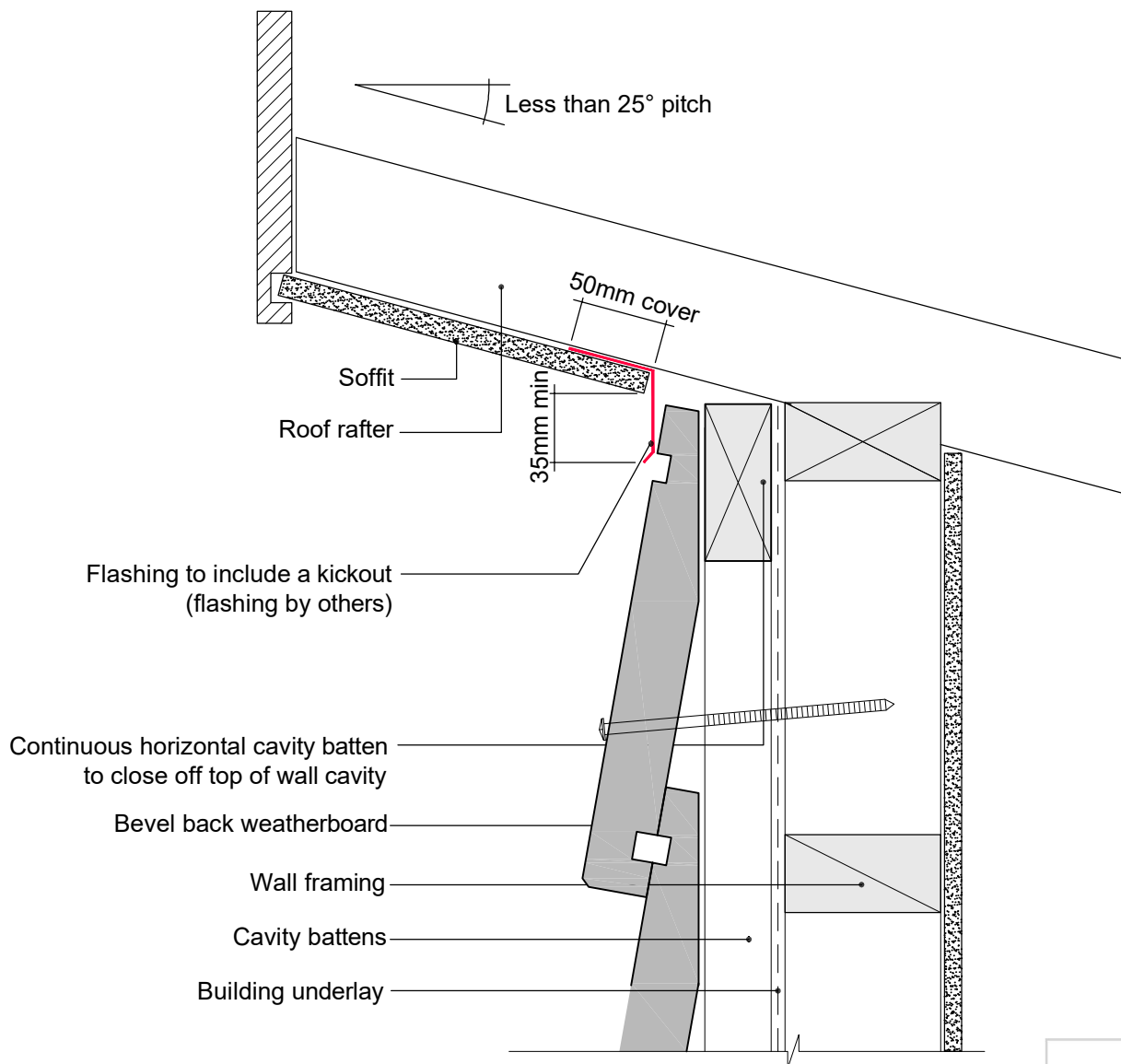


1. Weatherboards must be coated with at least one coat all sides prior to fixing.
2. Fixing points must be pre-drilled minimum 1mm smaller than the fastener.
3. Cut ends and exposed timber must be sealed with an approved coating or end seal.



Bevel Back Weatherboard

Alternative Sloping Soffit Detail

Scale
1:2

Date
22/06/19



© 2013 Abodo Wood Ltd, PO Box 8961, Symonds St, Auckland 1052
Ph 64 9) 302 9555 Fx 64 9) 302 9550
www.abodo.co.nz

Drawing No.
B.C.F.65