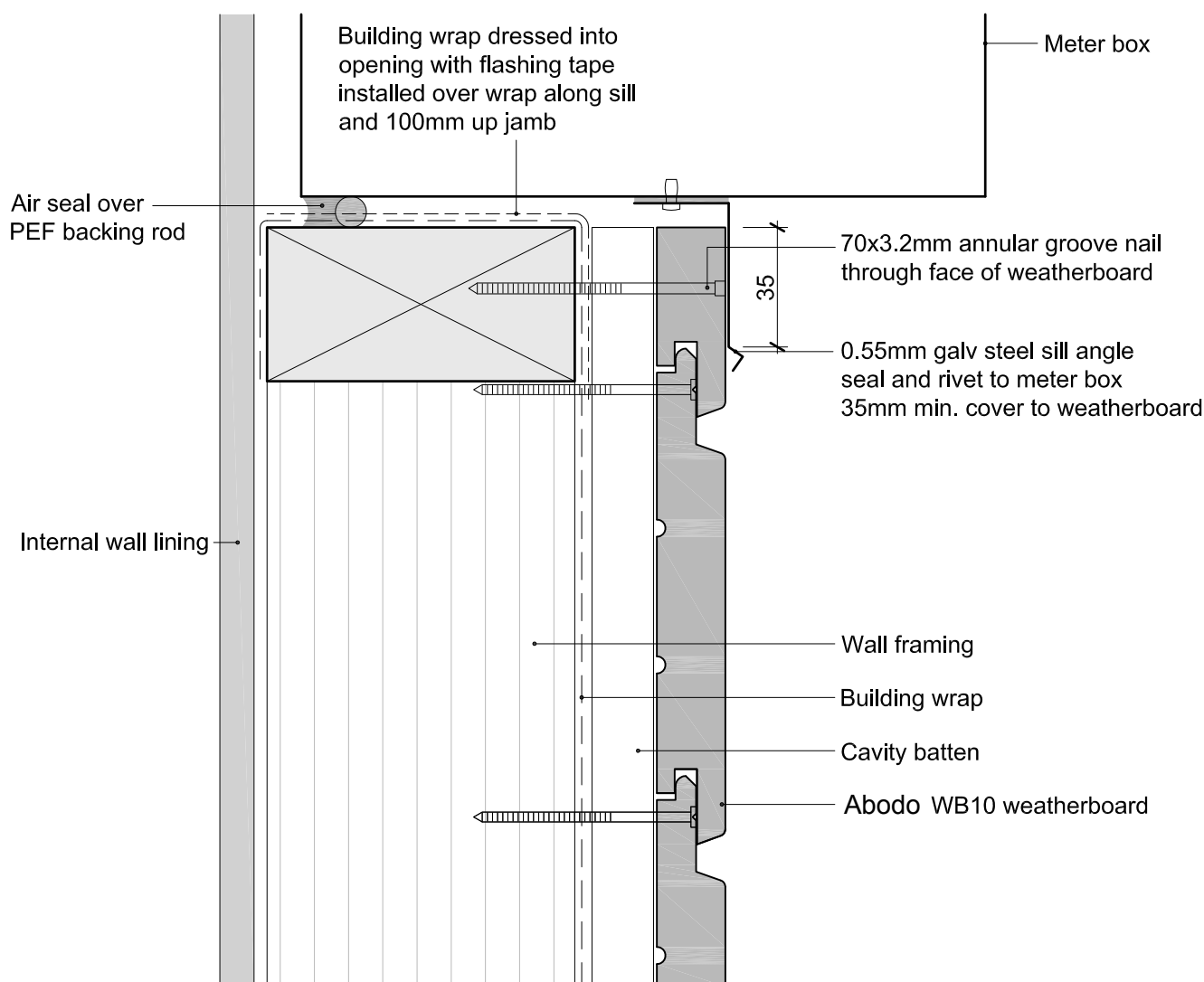


1. Weatherboards must be coated with at least one coat all sides prior to fixing.
2. Fixing points must be pre-drilled minimum 1mm smaller than the fastener.
3. Cut ends and exposed timber must be sealed with an approved coating or end seal.



**Hector WB10 Horizontal Weatherboard**  
Meter Box Sill Detail

Scale  
**1:2**

Date  
**3/10/13**



© 2013 Abodo Wood Ltd, PO Box 8961, Symonds St, Auckland 1052  
Ph 64 9) 302 9555 Fx 64 9) 302 9550  
[www.abodo.co.nz](http://www.abodo.co.nz)

Drawing No.  
**HH.C.F.53**