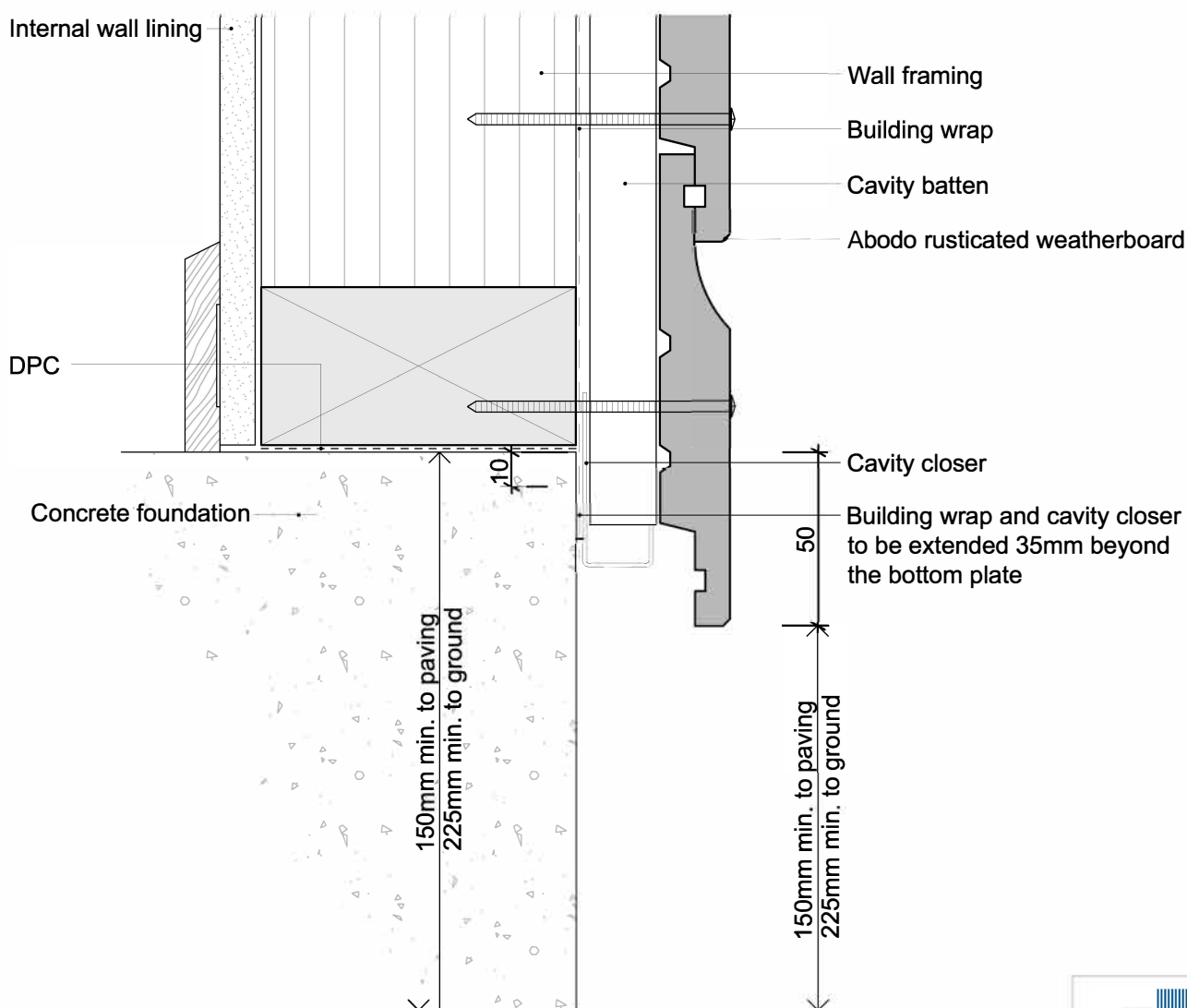


Horizontal Rusticated Weatherboard Details

- Flexible underlay

R.C.F.01	Base Of Wall - Concrete Floor
R.C.F.02	Base Of Wall - Timber Floor
R.C.F.11	Inter-Storey Cavity Junction
R.C.F.12	Packer Cavity Batten - Painted
R.C.F.13	Packer Cavity Batten - Stained
R.C.F.21	External 90° Corner - Boxed
R.C.F.22	External 90° Corner - Moulding
R.C.F.23	External 135° Corner - Mitred & Boxed
R.C.F.24	External 90° Corner - AW42 Moulding
R.C.F.25	External 90° Corner - AW46 Moulding
R.C.F.31	Internal 90° Corner - Butted
R.C.F.32	Internal 90° Corner - Moulding
R.C.F.33	Internal 90° Corner - Flashing
R.C.F.34	Internal 135° Corner - Flashing
R.C.F.35	Internal 90° Corner - AW46 Moulding
R.C.F.41	Enclosed Deck - Concrete Substrate
R.C.F.42	Enclosed Deck - Timber Substrate
R.C.F.43	Parapet Balustrade Cap Flashing
R.C.F.44	Parapet Balustrade Intersection With Wall - Butted
R.C.F.45	Parapet Balustrade Intersection With Wall - Moulding
R.C.F.46	Parapet Balustrade Intersection With Wall - AW46 Moulding
R.C.F.51	Meter Box Head
R.C.F.52	Meter Box Jamb
R.C.F.53	Meter Box Sill
R.C.F.54	Pipe Penetration
R.C.F.55	Weatherboard Join
R.C.F.57	Apron Flashing
R.C.F.58	Roof Kick-out Flashing Cavity Detail
R.C.F.61	Top Of Wall - Flat Soffit
R.C.F.62	Top Of Wall - No Soffit
R.C.F.63	Top Of Wall - Sloping Soffit
R.C.F.71	Window Head
R.C.F.72	Window Jamb
R.C.F.73	Window Sill
R.C.F.74	Window Jamb- Option 2

1. Weatherboards must be coated with at least one coat all sides prior to fixing.
2. Fixing points must be pre-drilled minimum 1mm smaller than the fastener.
3. Cut ends and exposed timber must be sealed with an approved coating or end seal.



Rusticated Weatherboard

Base Of Wall - Concrete Floor

Scale

1:2

Date

20/06/15

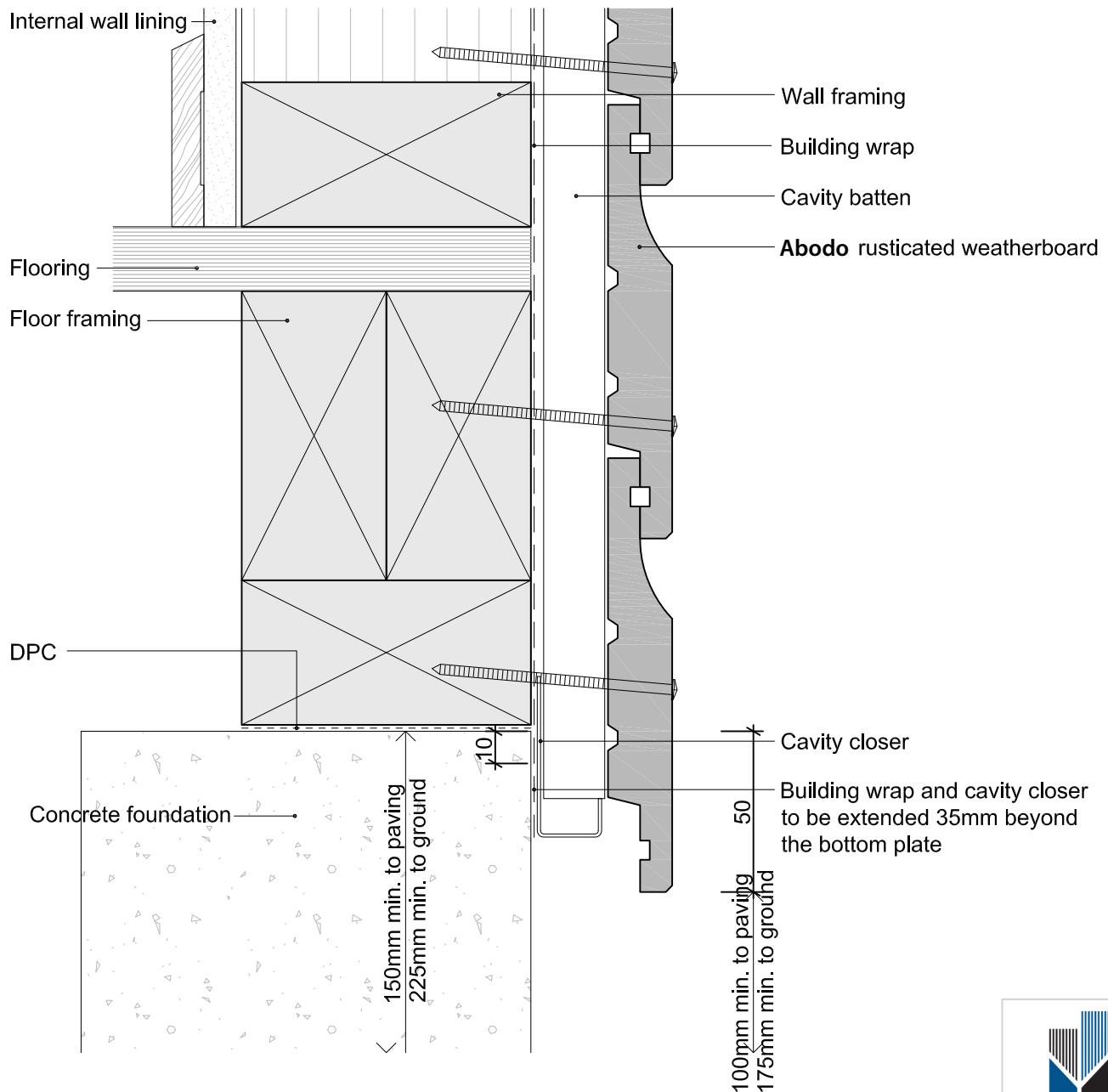


© 2013 Abodo Wood Ltd, PO Box 8961, Symonds St, Auckland 1052
Ph 64 9) 302 9555 Fx 64 9) 302 9550
www.abodo.co.nz

Drawing No.

R.C.F.01

1. Weatherboards must be coated with at least one coat all sides prior to fixing.
2. Fixing points must be pre-drilled minimum 1mm smaller than the fastener.
3. Cut ends and exposed timber must be sealed with an approved coating or end seal.



Rusticated Weatherboard

Base Of Wall - Timber Floor

Scale
1:2

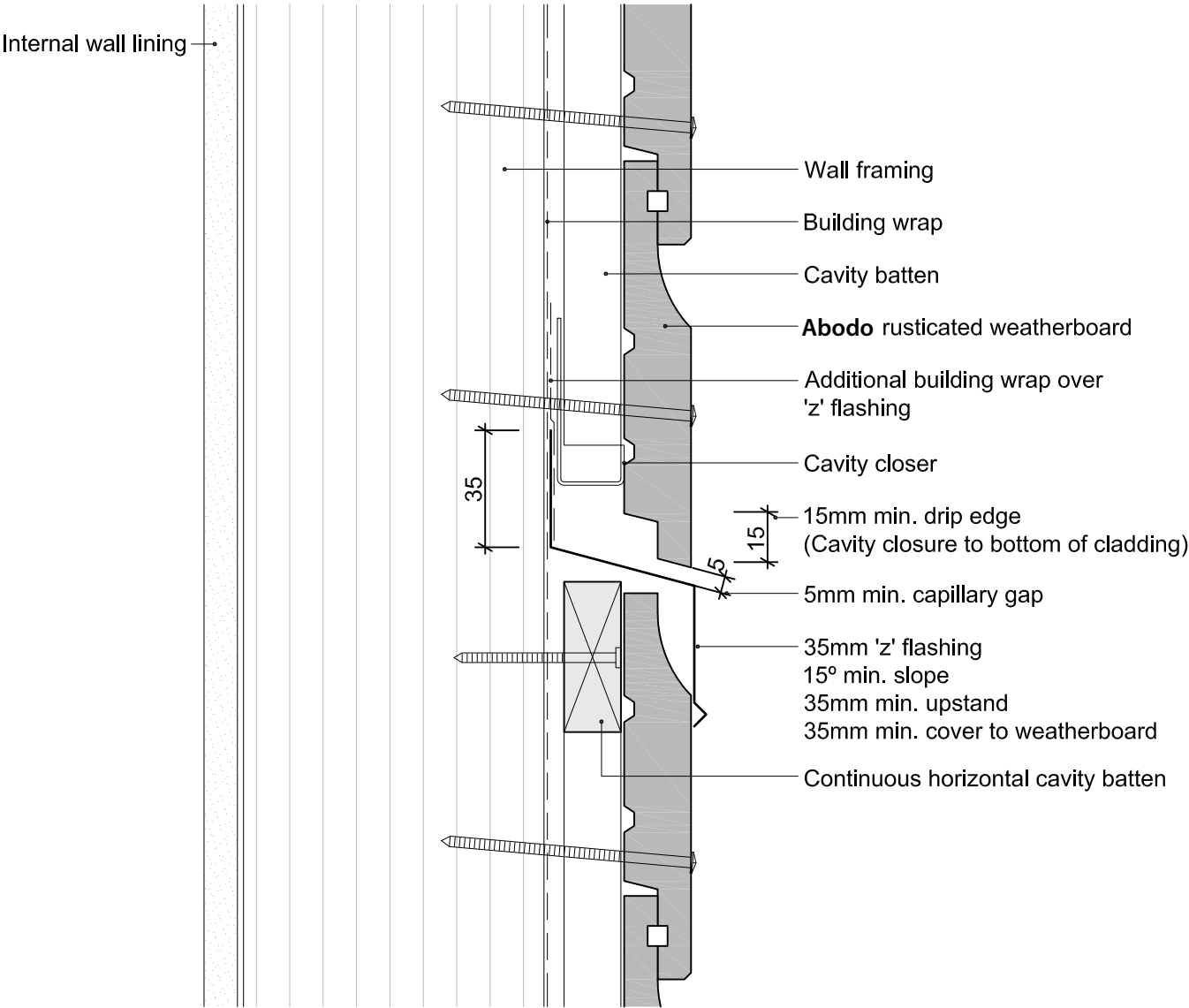
Date
20/06/15



© 2013 Abodo Wood Ltd, PO Box 8961, Symonds St, Auckland 1052
Ph 64 9) 302 9555 Fx 64 9) 302 9550
www.abodo.co.nz

Drawing No.
R.C.F.02

1. Weatherboards must be coated with at least one coat all sides prior to fixing.
2. Fixing points must be pre-drilled minimum 1mm smaller than the fastener.
3. Cut ends and exposed timber must be sealed with an approved coating or end seal.



Rusticated Weatherboard

Inter-Storey Cavity Junction

Scale
1:2

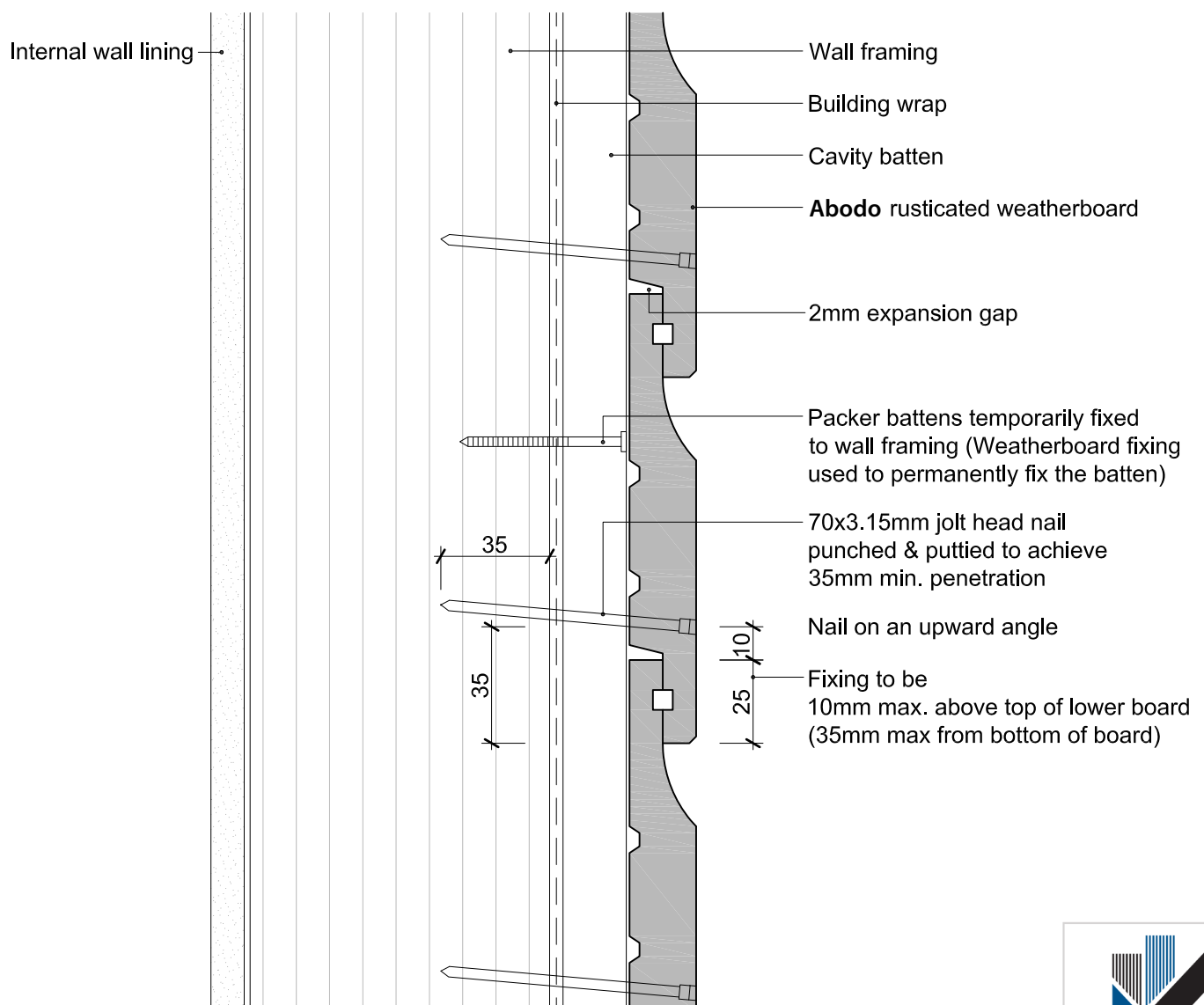
Date
27/09/14



© 2013 Abodo Wood Ltd, PO Box 8961, Symonds St, Auckland 1052
Ph 64 9) 302 9555 Fx 64 9) 302 9550
www.abodo.co.nz

Drawing No.
R.C.F.11

1. Weatherboards must be coated with at least one coat all sides prior to fixing.
2. Fixing points must be pre-drilled minimum 1mm smaller than the fastener.
3. Cut ends and exposed timber must be sealed with an approved coating or end seal.



Rusticated Weatherboard

Packer Cavity Batten - Painted

Scale
1:2

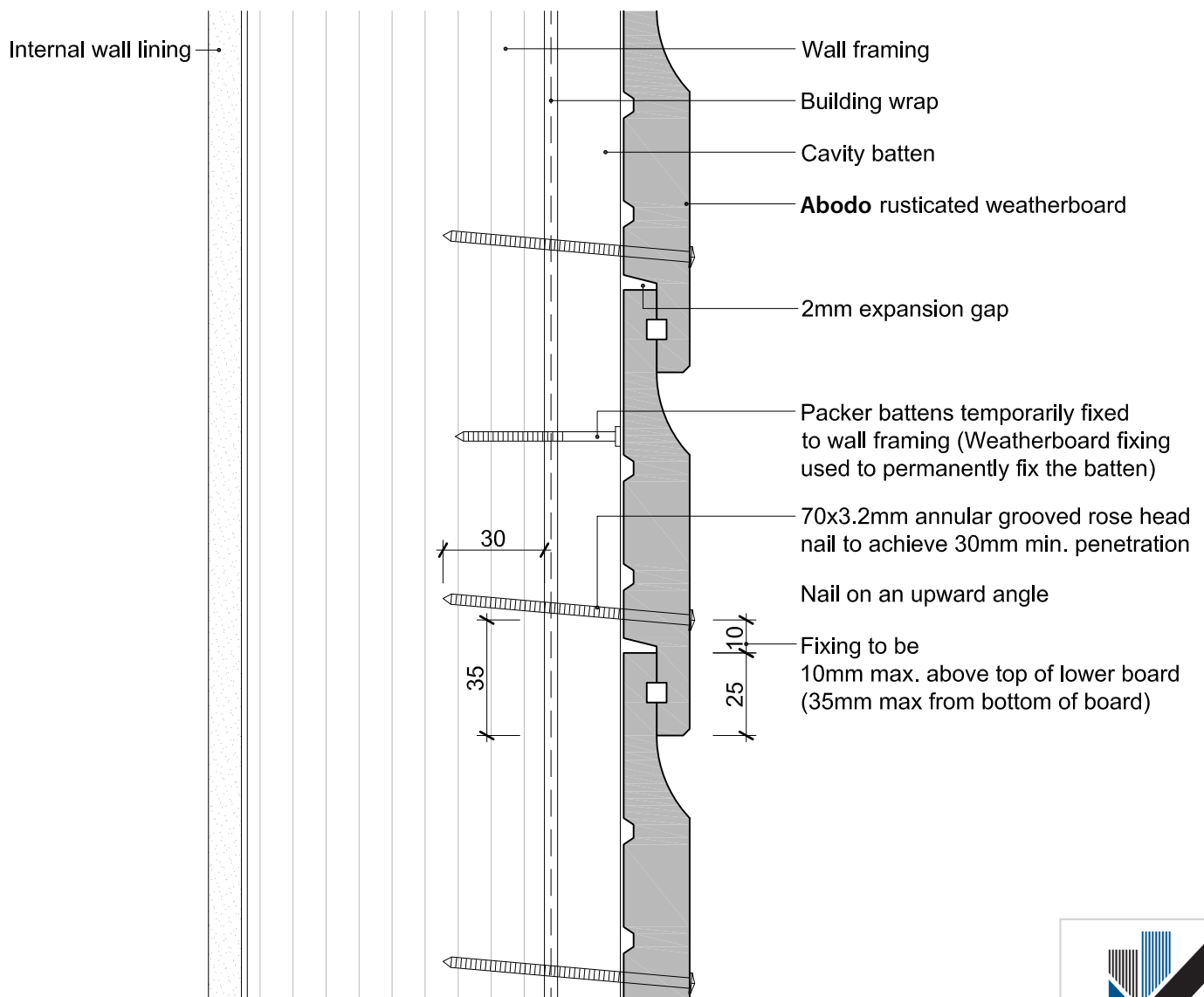
Date
3/10/13



© 2013 Abodo Wood Ltd, PO Box 8961, Symonds St, Auckland 1052
Ph 64 9) 302 9555 Fx 64 9) 302 9550
www.abodo.co.nz

Drawing No.
R.C.F.12

1. Weatherboards must be coated with at least one coat all sides prior to fixing.
2. Fixing points must be pre-drilled minimum 1mm smaller than the fastener.
3. Cut ends and exposed timber must be sealed with an approved coating or end seal.



Rusticated Weatherboard

Packer Cavity Batten - Stained

Scale
1:2

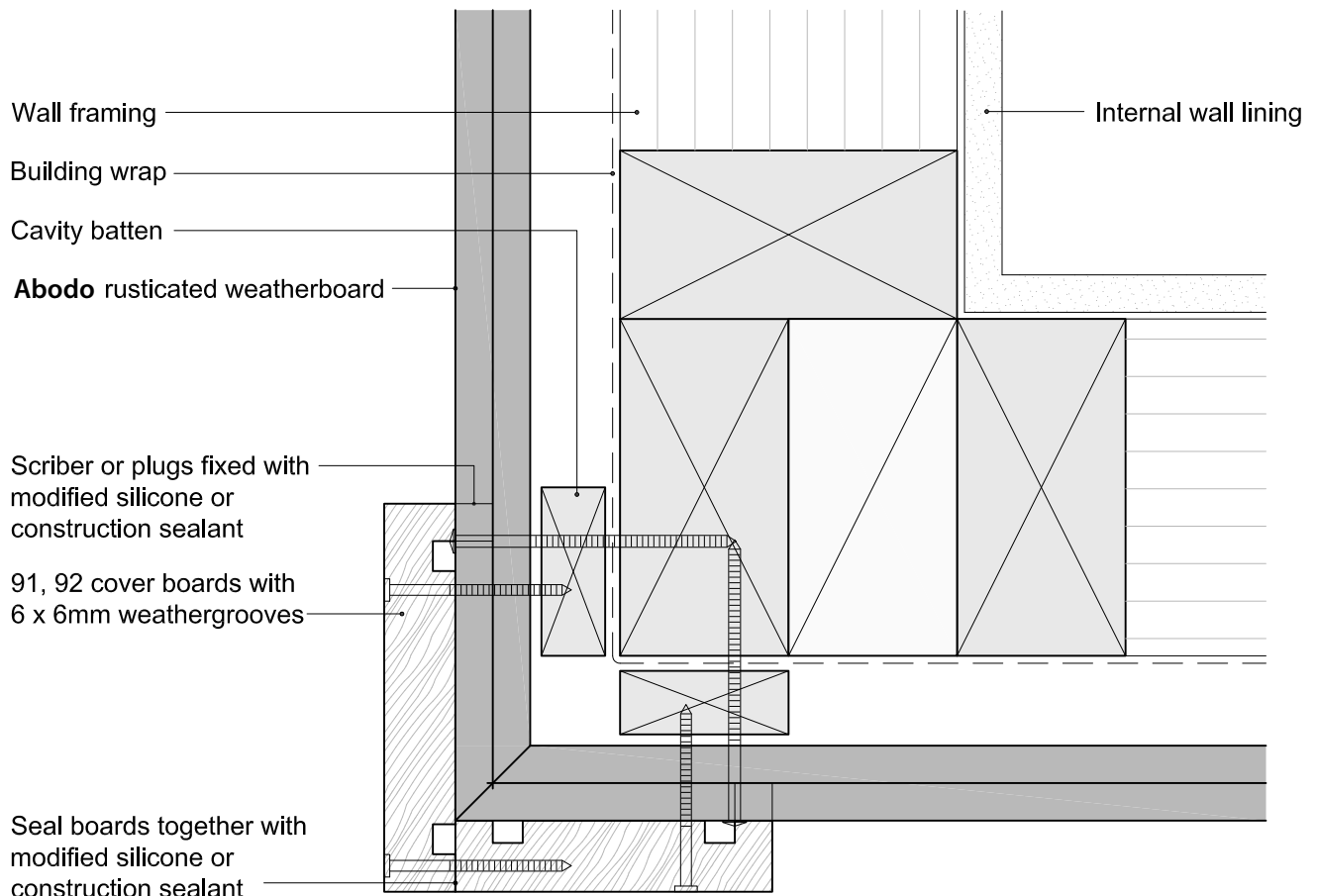
Date
3/10/13



© 2013 Abodo Wood Ltd, PO Box 8961, Symonds St, Auckland 1052
Ph 64 9) 302 9555 Fx 64 9) 302 9550
www.abodo.co.nz

Drawing No.
R.C.F.13

1. Weatherboards must be coated with at least one coat all sides prior to fixing.
2. Fixing points must be pre-drilled minimum 1mm smaller than the fastener.
3. Cut ends and exposed timber must be sealed with an approved coating or end seal.



Rusticated Weatherboard

External 90° Corner - Boxed

Scale
1:2

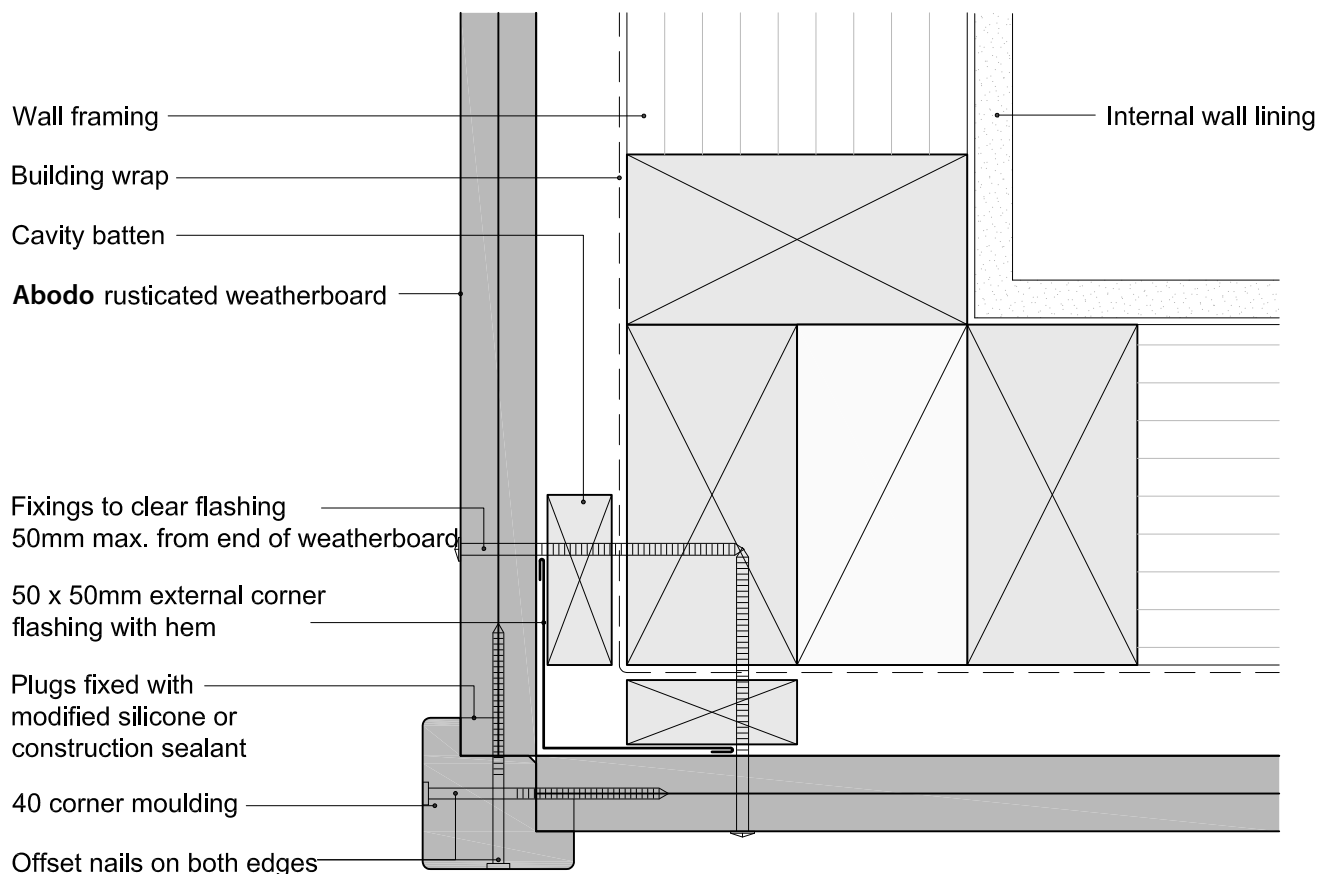
Date
20/06/15



© 2013 Abodo Wood Ltd, PO Box 8961, Symonds St, Auckland 1052
Ph 64 9) 302 9555 Fx 64 9) 302 9550
www.abodo.co.nz

Drawing No.
R.C.F.21

1. Weatherboards must be coated with at least one coat all sides prior to fixing.
2. Fixing points must be pre-drilled minimum 1mm smaller than the fastener.
3. Cut ends and exposed timber must be sealed with an approved coating or end seal.



Rusticated Weatherboard

External 90° Corner - Moulding

Scale
1:2

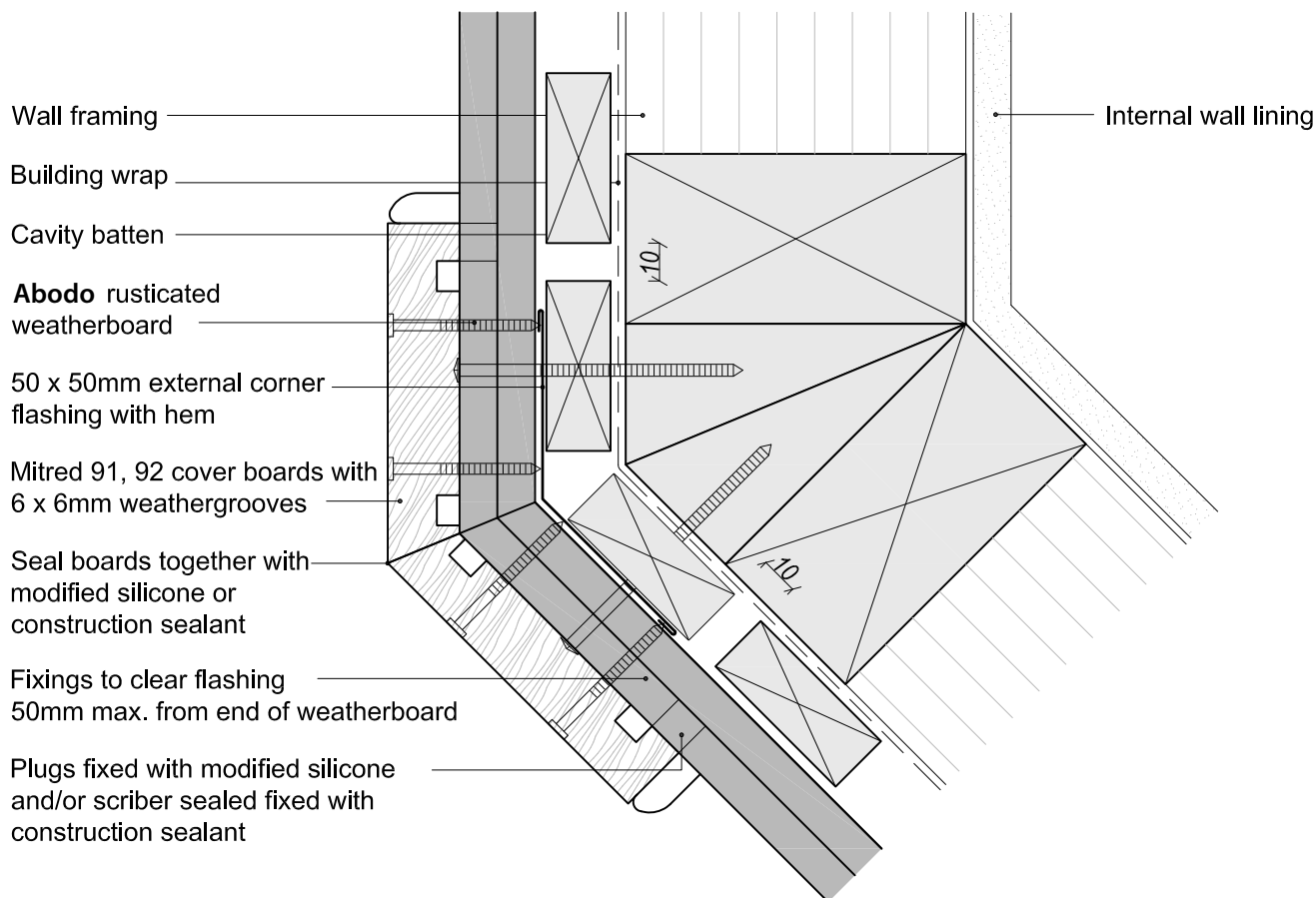
Date
3/10/13



© 2013 Abodo Wood Ltd, PO Box 8961, Symonds St, Auckland 1052
Ph 64 9) 302 9555 Fx 64 9) 302 9550
www.abodo.co.nz

Drawing No.
R.C.F.22

1. Weatherboards must be coated with at least one coat all sides prior to fixing.
2. Fixing points must be pre-drilled minimum 1mm smaller than the fastener.
3. Cut ends and exposed timber must be sealed with an approved coating or end seal.



Rusticated Weatherboard

External 135° Corner - Mitred & Boxed

Scale
1:2

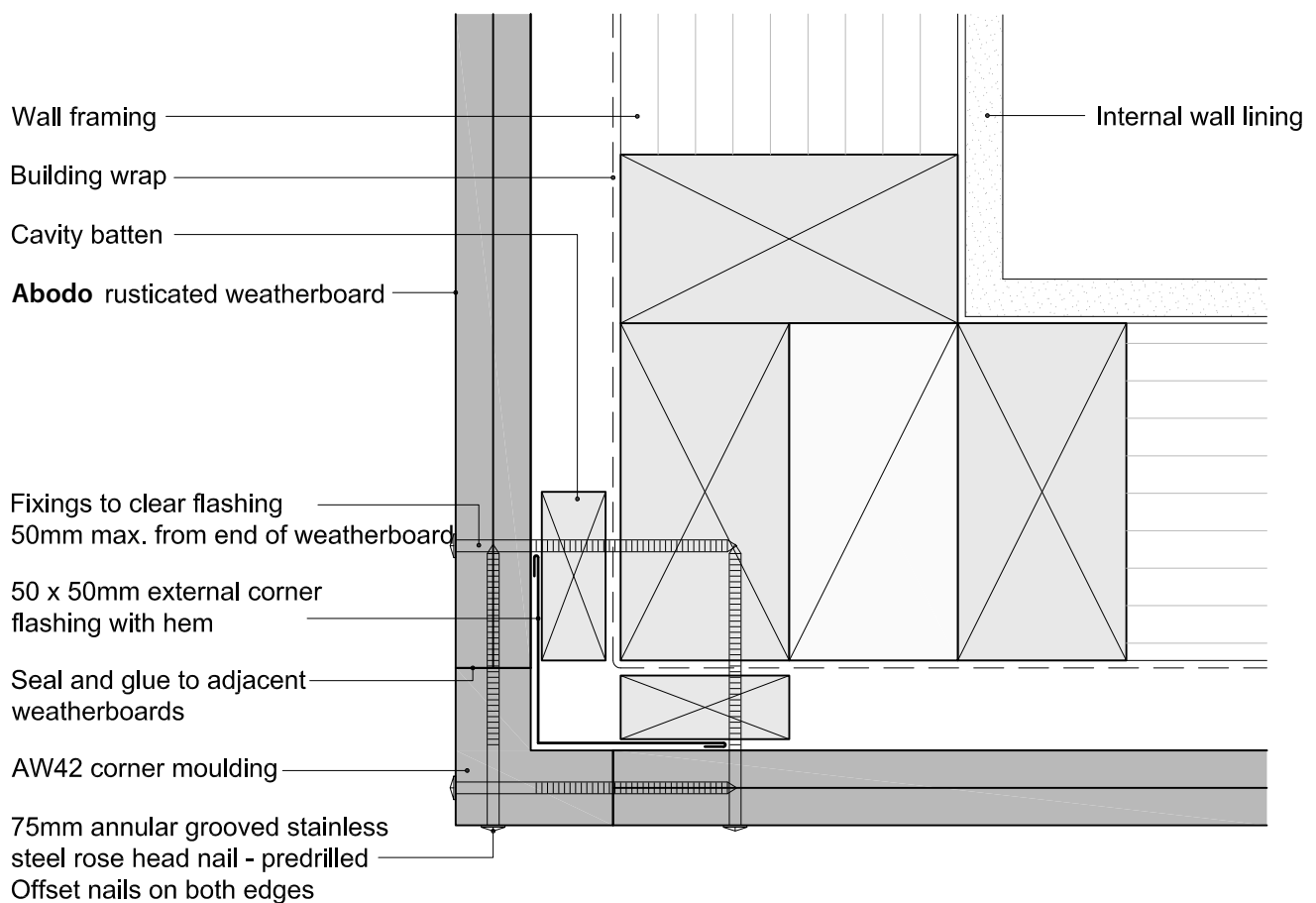
Date
20/06/15



© 2013 Abodo Wood Ltd, PO Box 8961, Symonds St, Auckland 1052
Ph 64 9) 302 9555 Fx 64 9) 302 9550
www.abodo.co.nz

Drawing No.
R.C.F.23

1. Weatherboards must be coated with at least one coat all sides prior to fixing.
2. Fixing points must be pre-drilled minimum 1mm smaller than the fastener.
3. Cut ends and exposed timber must be sealed with an approved coating or end seal.



Rusticated Weatherboard

External 90° Corner - AW42 Moulding

Scale
1:2

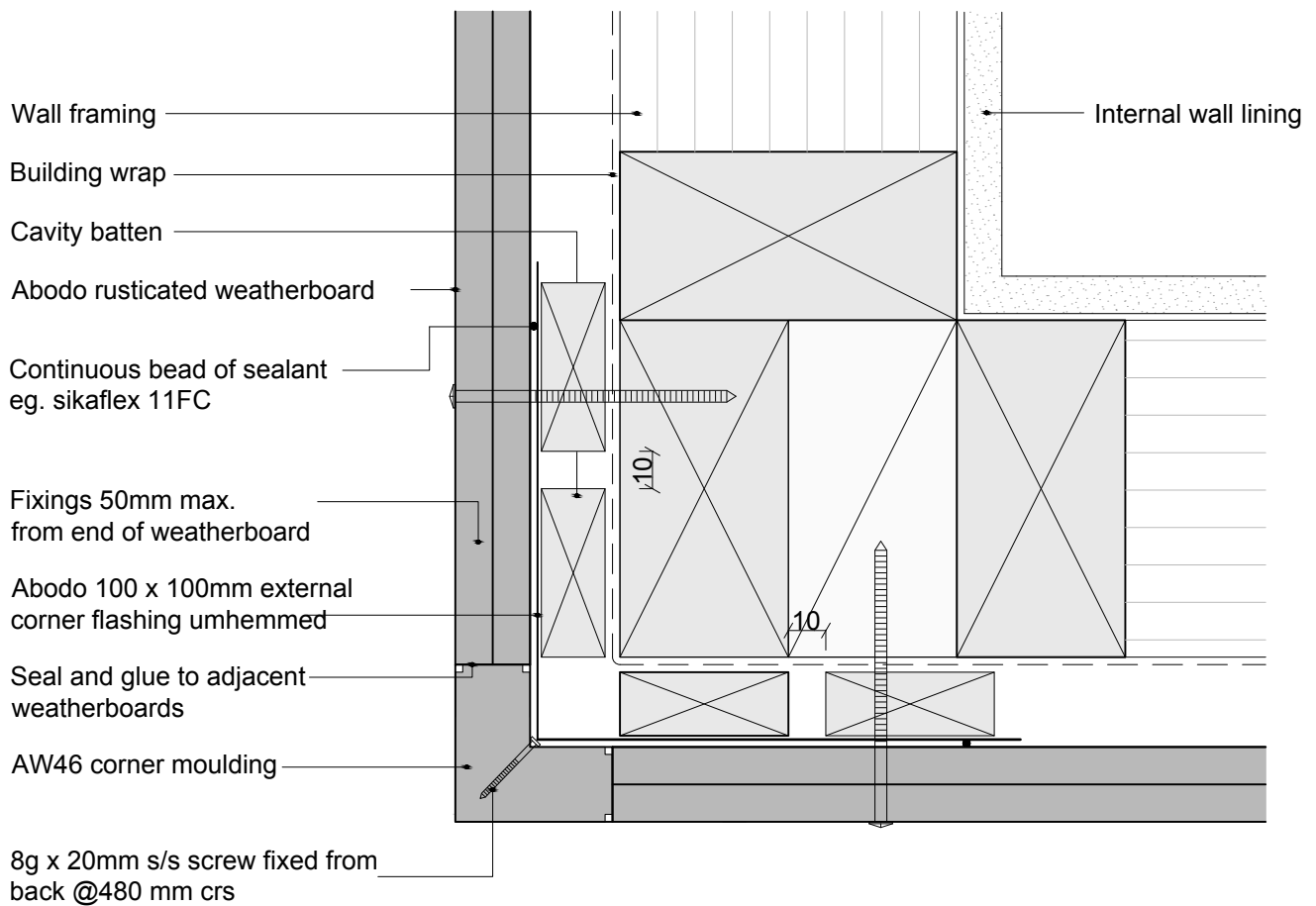
Date
3/10/13



© 2013 Abodo Wood Ltd, PO Box 8961, Symonds St, Auckland 1052
Ph 64 9) 302 9555 Fx 64 9) 302 9550
www.abodo.co.nz

Drawing No.
R.C.F.24

1. Weatherboards must be coated with at least one coat all sides prior to fixing.
2. Fixing points must be pre-drilled minimum 1mm smaller than the fastener.
3. Cut ends and exposed timber must be sealed with an approved coating or end seal.



Rusticated Weatherboard

External 90° Corner - AW46 Moulding

Scale
1:2

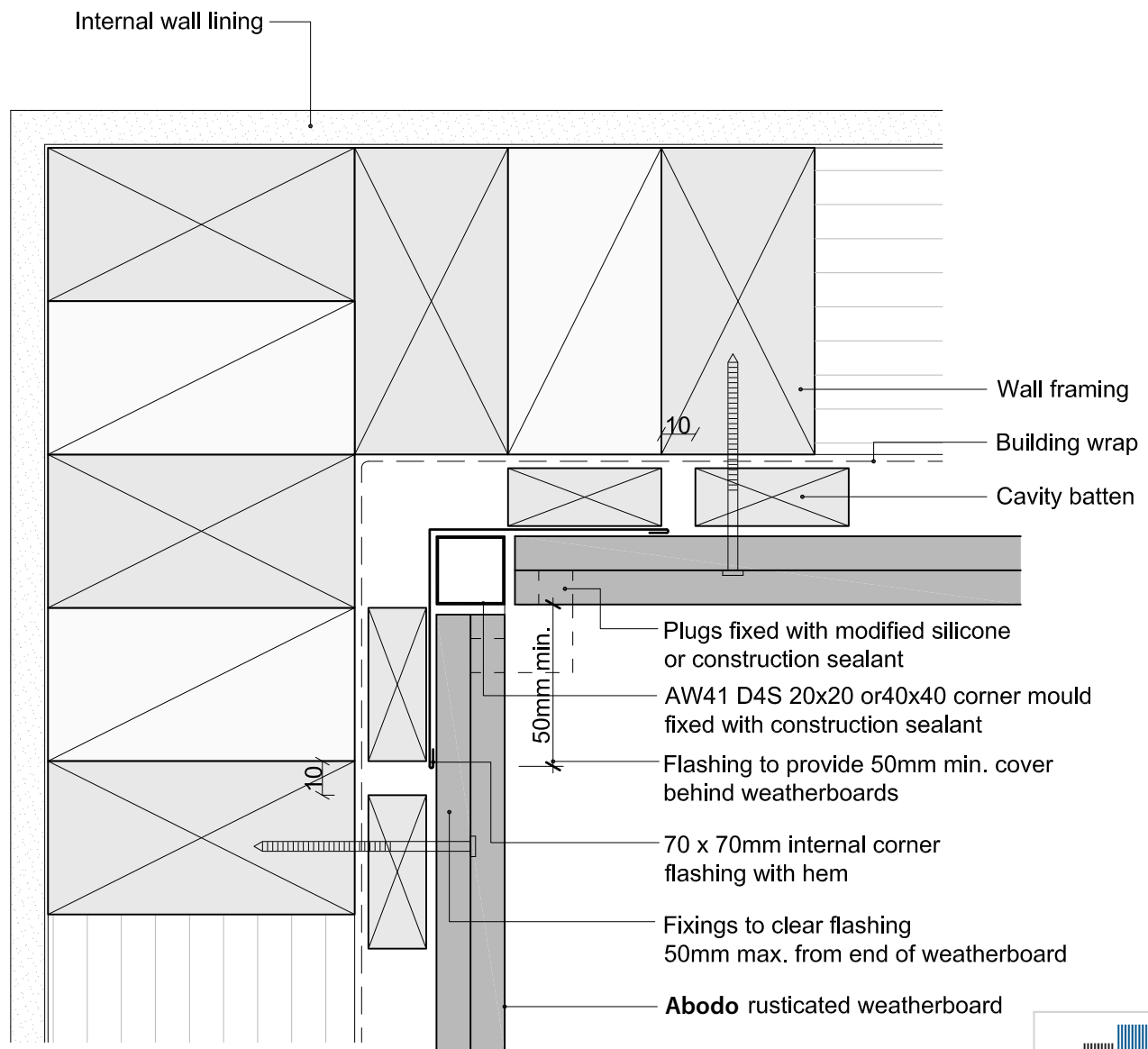
Date
3/10/13



© 2013 Abodo Wood Ltd, PO Box 8961, Symonds St, Auckland 1052
Ph 64 9) 302 9555 Fx 64 9) 302 9550
www.abodo.co.nz

Drawing No.
R.C.F.25

1. Weatherboards must be coated with at least one coat all sides prior to fixing.
2. Fixing points must be pre-drilled minimum 1mm smaller than the fastener.
3. Cut ends and exposed timber must be sealed with an approved coating or end seal.



Rusticated Weatherboard

Internal 90° Corner - Butted

Scale

1:2

Date

20/06/15

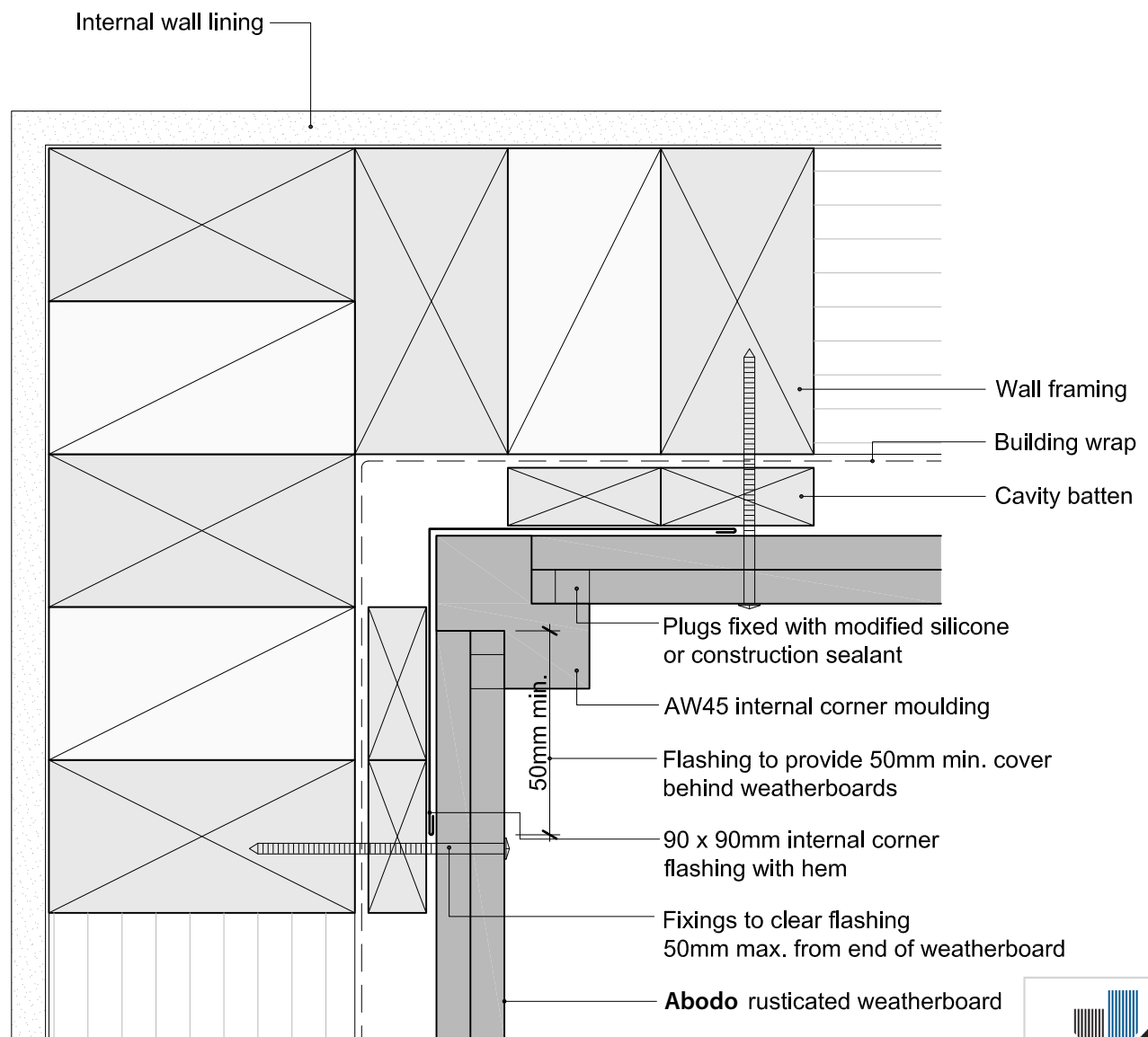


© 2013 Abodo Wood Ltd, PO Box 8961, Symonds St, Auckland 1052
Ph 64 9) 302 9555 Fx 64 9) 302 9550
www.abodo.co.nz

Drawing No.

R.C.F.31

1. Weatherboards must be coated with at least one coat all sides prior to fixing.
2. Fixing points must be pre-drilled minimum 1mm smaller than the fastener.
3. Cut ends and exposed timber must be sealed with an approved coating or end seal.



Rusticated Weatherboard

Internal 90° Corner - Moulding

Scale
1:2

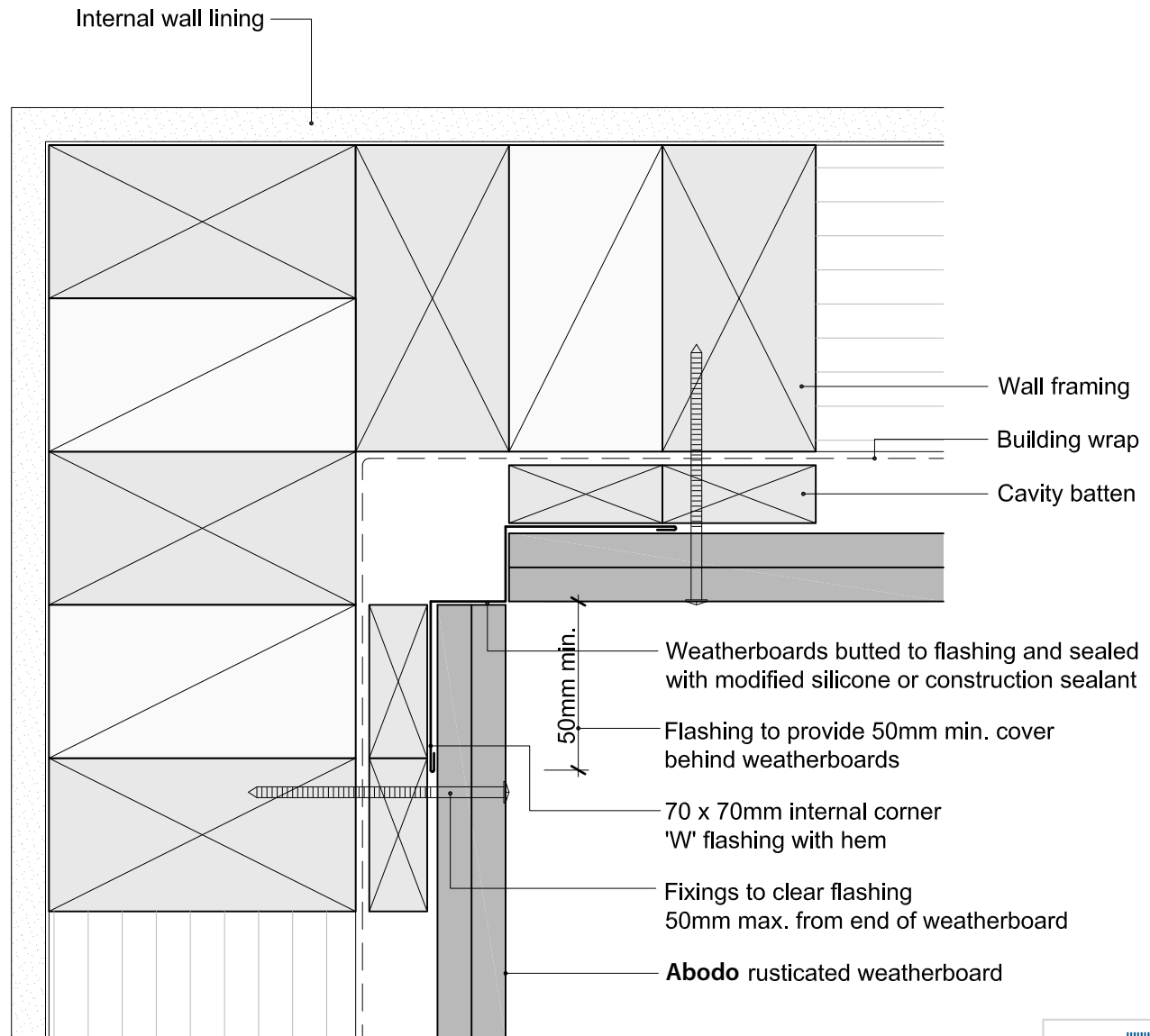
Date
3/10/13



© 2013 Abodo Wood Ltd, PO Box 8961, Symonds St, Auckland 1052
Ph 64 9) 302 9555 Fx 64 9) 302 9550
www.abodo.co.nz

Drawing No.
R.C.F.32

1. Weatherboards must be coated with at least one coat all sides prior to fixing.
2. Fixing points must be pre-drilled minimum 1mm smaller than the fastener.
3. Cut ends and exposed timber must be sealed with an approved coating or end seal.



Rusticated Weatherboard

Internal 90° Corner - Flashing

Scale
1:2

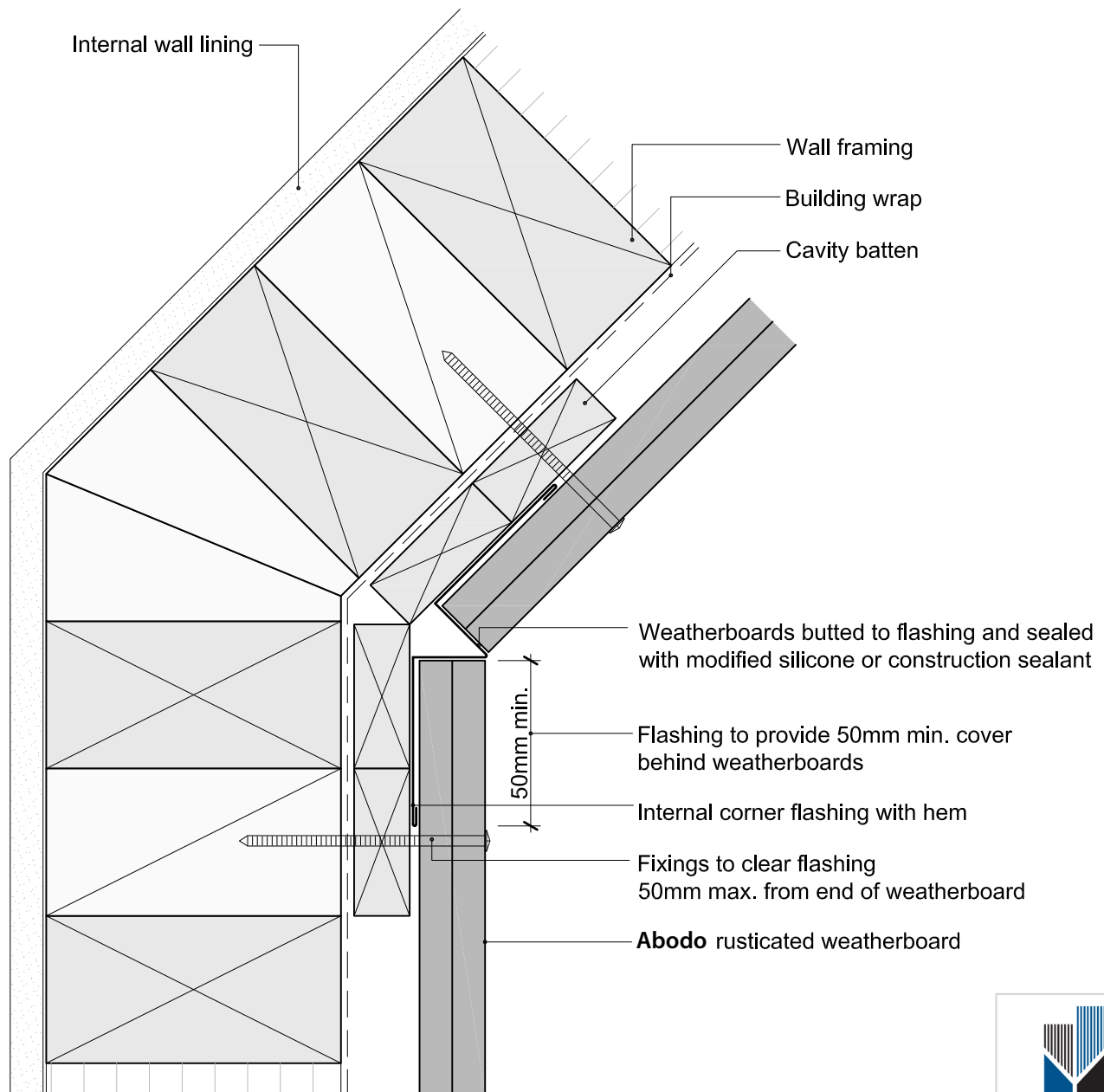
Date
3/10/13



© 2013 Abodo Wood Ltd, PO Box 8961, Symonds St, Auckland 1052
Ph 64 9) 302 9555 Fx 64 9) 302 9550
www.abodo.co.nz

Drawing No.
R.C.F.33

1. Weatherboards must be coated with at least one coat all sides prior to fixing.
2. Fixing points must be pre-drilled minimum 1mm smaller than the fastener.
3. Cut ends and exposed timber must be sealed with an approved coating or end seal.



Rusticated Weatherboard

Internal 135° Corner - Flashing

Scale
1:2

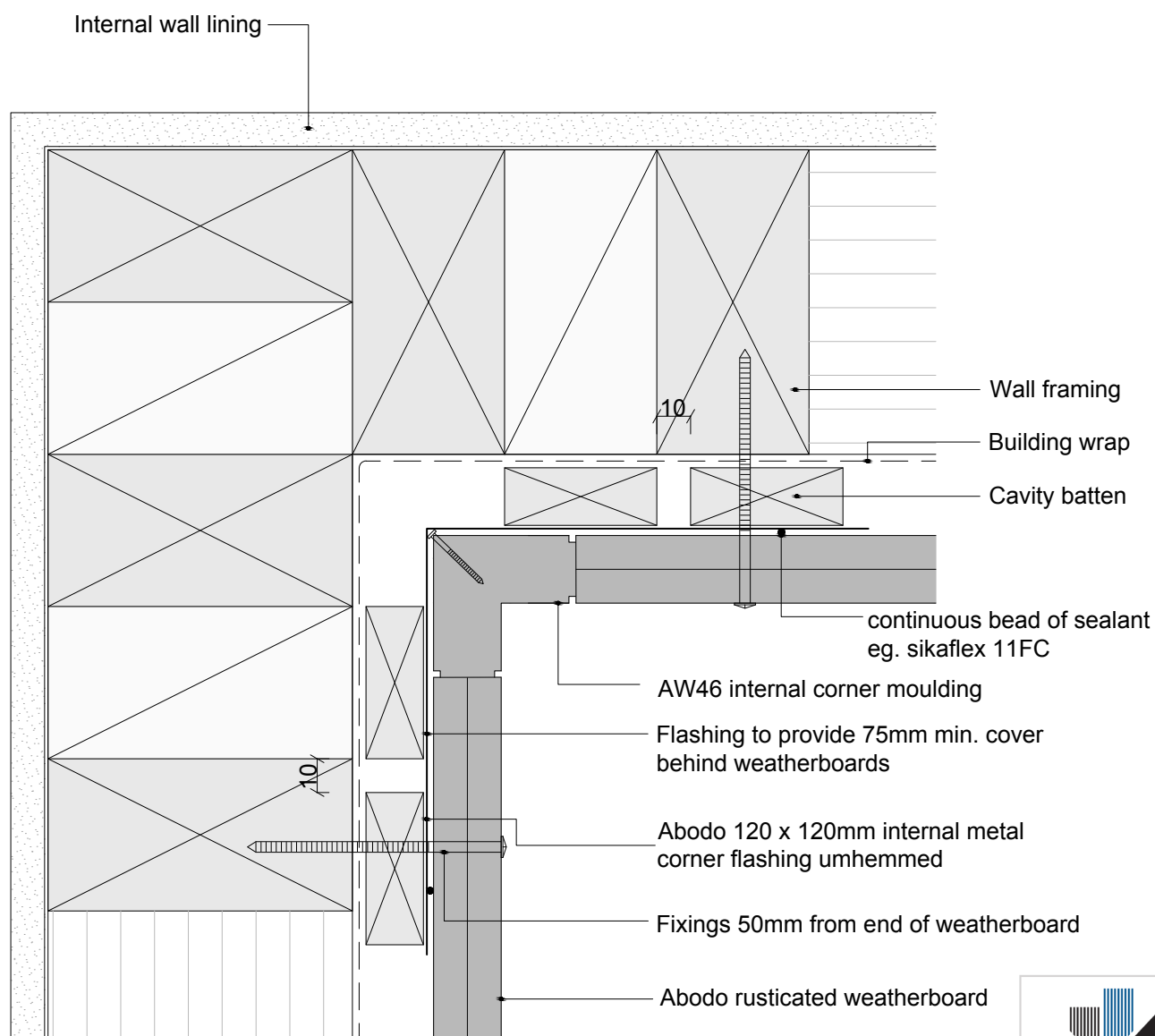
Date
3/10/13



© 2013 Abodo Wood Ltd, PO Box 8961, Symonds St, Auckland 1052
Ph 64 9) 302 9555 Fx 64 9) 302 9550
www.abodo.co.nz

Drawing No.
R.C.F.34

1. Weatherboards must be coated with at least one coat all sides prior to fixing.
2. Fixing points must be pre-drilled minimum 1mm smaller than the fastener.
3. Cut ends and exposed timber must be sealed with an approved coating or end seal.



Rusticated Weatherboard

Internal 90° Corner - AW46 Moulding

Scale
1:2

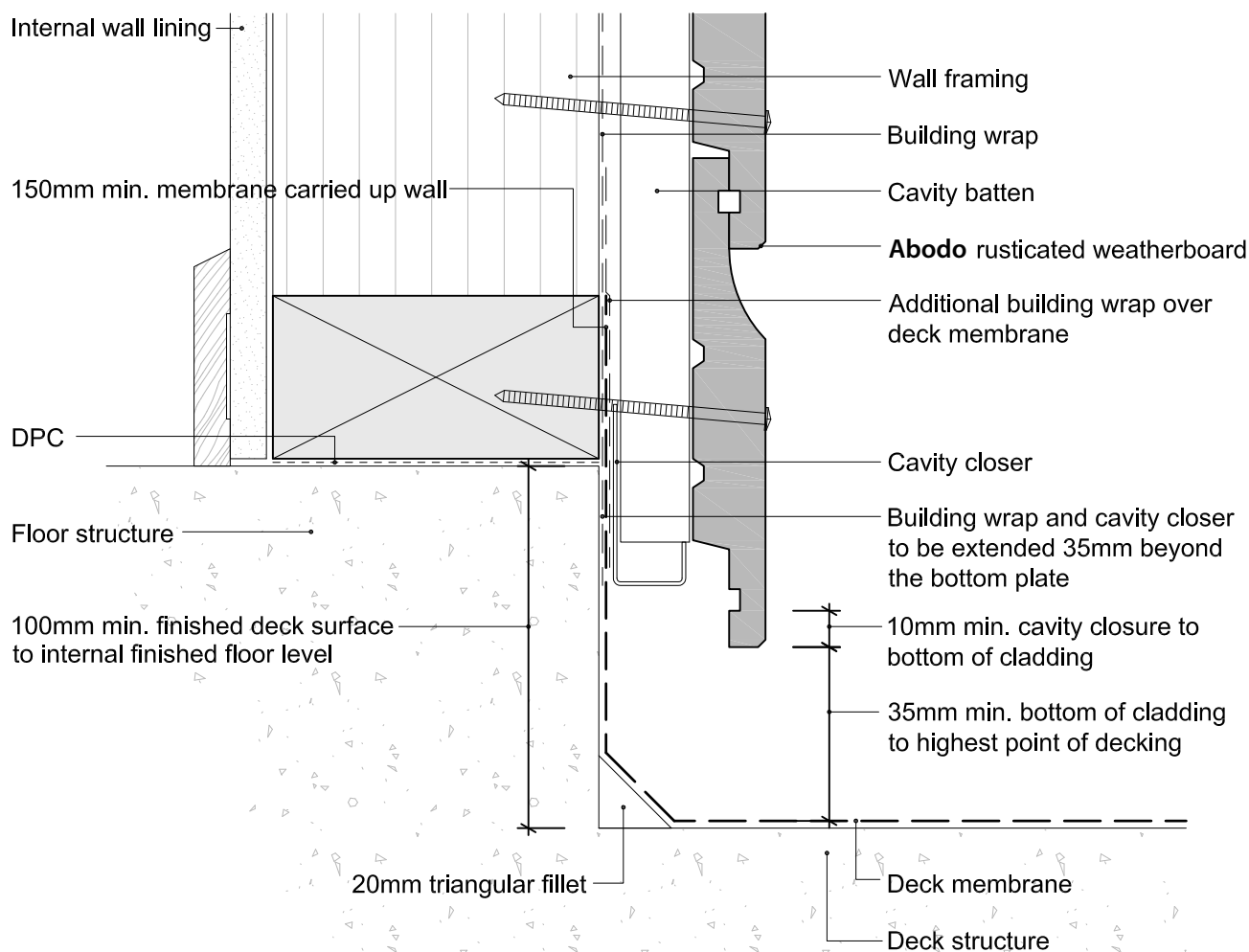
Date
3/10/13



© 2013 Abodo Wood Ltd, PO Box 8961, Symonds St, Auckland 1052
Ph 64 9) 302 9555 Fx 64 9) 302 9550
www.abodo.co.nz

Drawing No.
R.C.F.35

1. Weatherboards must be coated with at least one coat all sides prior to fixing.
2. Fixing points must be pre-drilled minimum 1mm smaller than the fastener.
3. Cut ends and exposed timber must be sealed with an approved coating or end seal.



Rusticated Weatherboard

Enclosed Deck - Concrete Substrate

Scale

1:2

Date

08/12/14

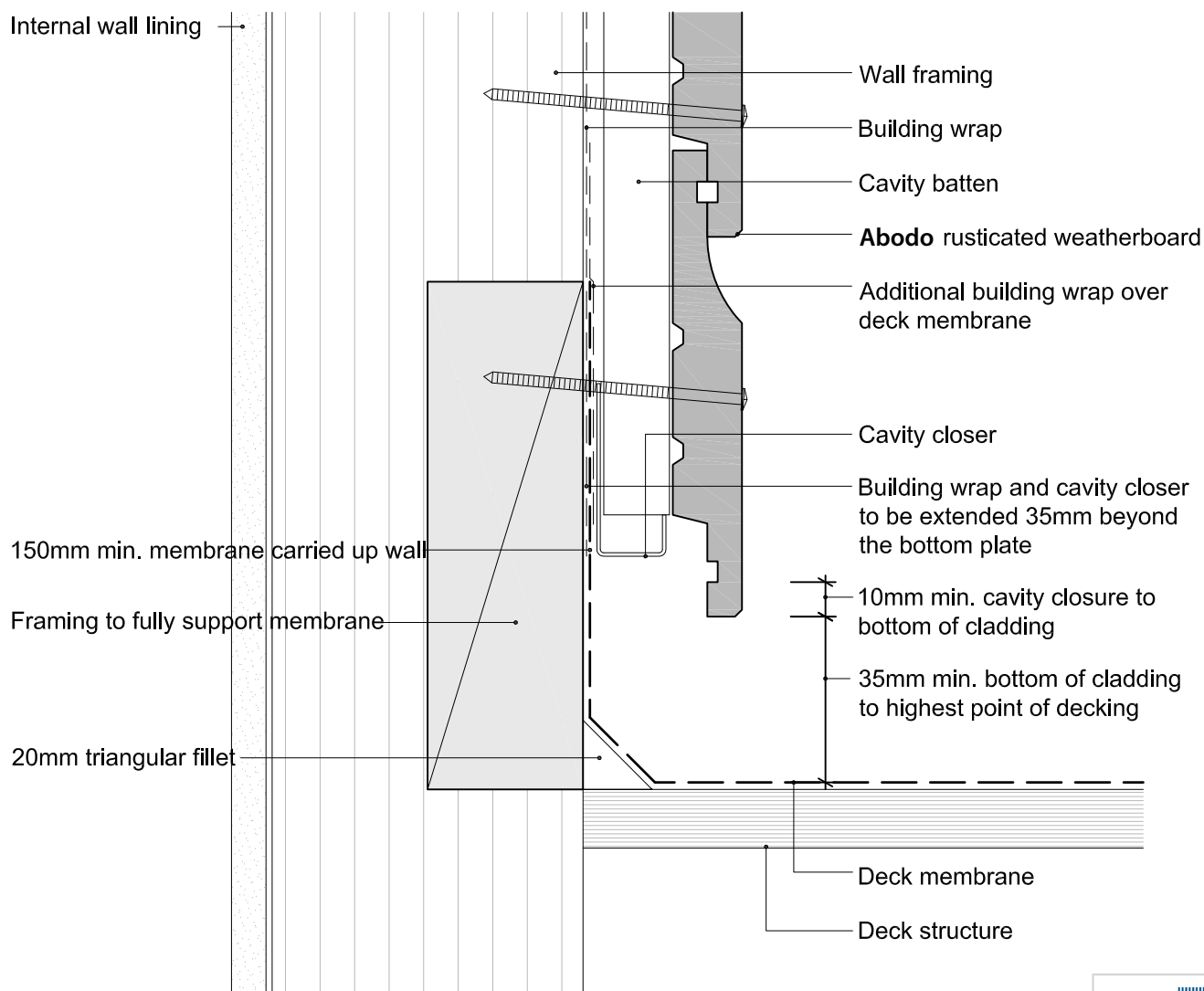


© 2013 Abodo Wood Ltd, PO Box 8961, Symonds St, Auckland 1052
Ph 64 9) 302 9555 Fx 64 9) 302 9550
www.abodo.co.nz

Drawing No.

R.C.F.41

1. Weatherboards must be coated with at least one coat all sides prior to fixing.
2. Fixing points must be pre-drilled minimum 1mm smaller than the fastener.
3. Cut ends and exposed timber must be sealed with an approved coating or end seal.



Rusticated Weatherboard

Enclosed Deck - Timber Substrate

Scale

1:2

Date

08/12/14

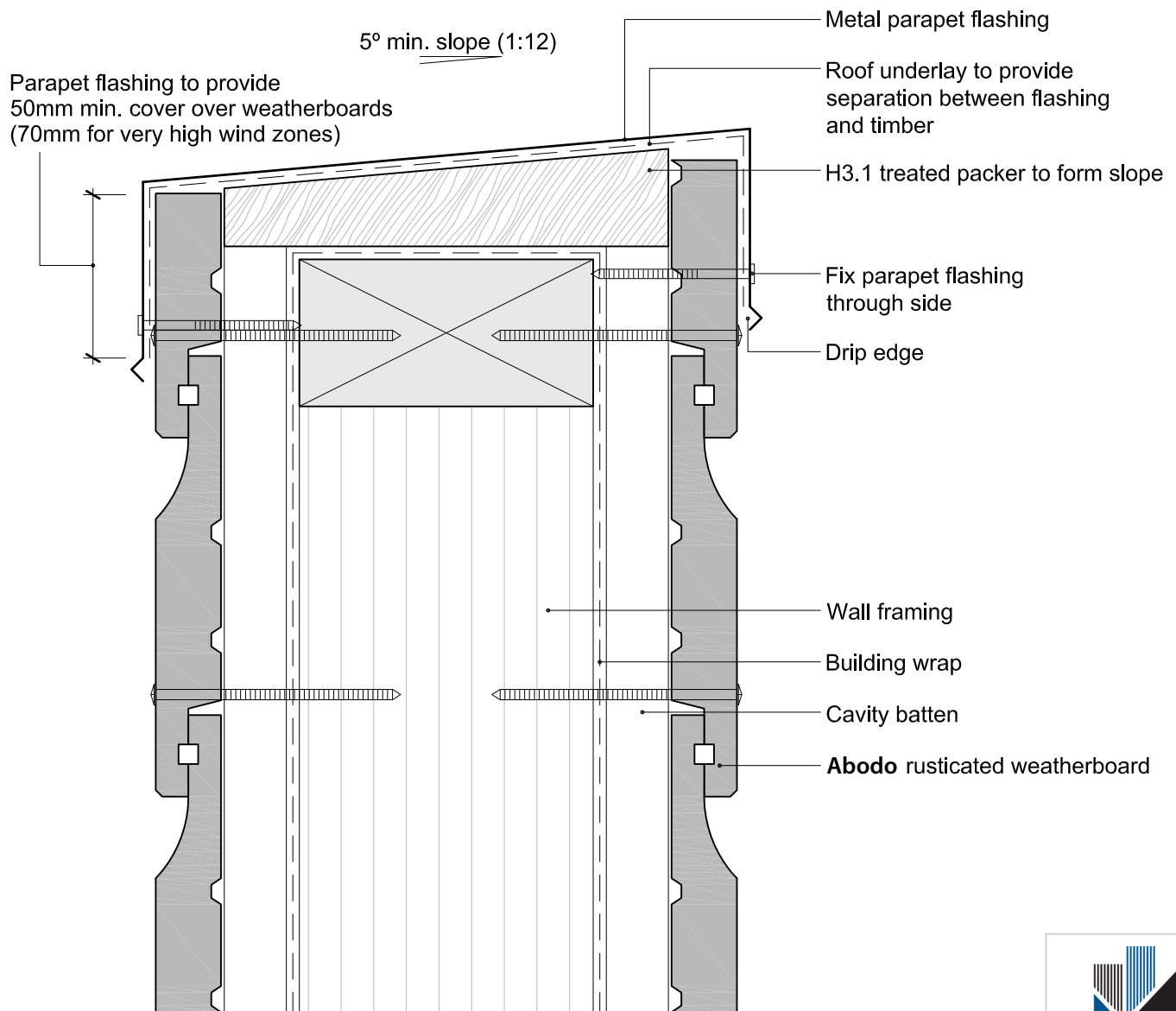


© 2013 Abodo Wood Ltd, PO Box 8961, Symonds St, Auckland 1052
Ph 64 9) 302 9555 Fx 64 9) 302 9550
www.abodo.co.nz

Drawing No.

R.C.F.42

1. Weatherboards must be coated with at least one coat all sides prior to fixing.
2. Fixing points must be pre-drilled minimum 1mm smaller than the fastener.
3. Cut ends and exposed timber must be sealed with an approved coating or end seal.



Rusticated Weatherboard

Parapet Balustrade Cap Flashing

Scale
1:2

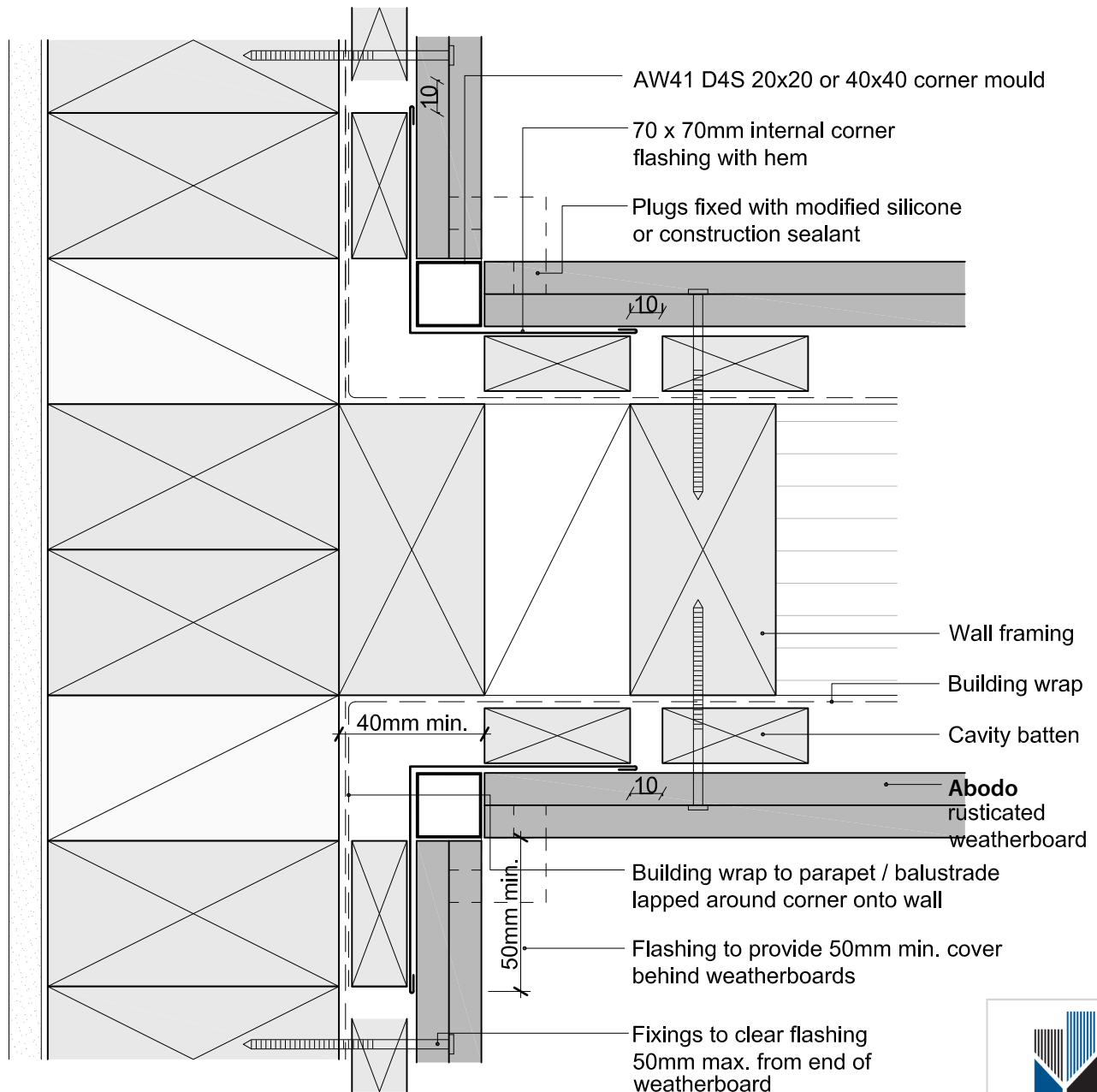
Date
3/10/13



© 2013 Abodo Wood Ltd, PO Box 8961, Symonds St, Auckland 1052
Ph 64 9) 302 9555 Fx 64 9) 302 9550
www.abodo.co.nz

Drawing No.
R.C.F.43

1. Weatherboards must be coated with at least one coat all sides prior to fixing.
2. Fixing points must be pre-drilled minimum 1mm smaller than the fastener.
3. Cut ends and exposed timber must be sealed with an approved coating or end seal.



Rusticated Weatherboard

Parapet Balustrade Intersection With Wall - Butted

Scale
1:2

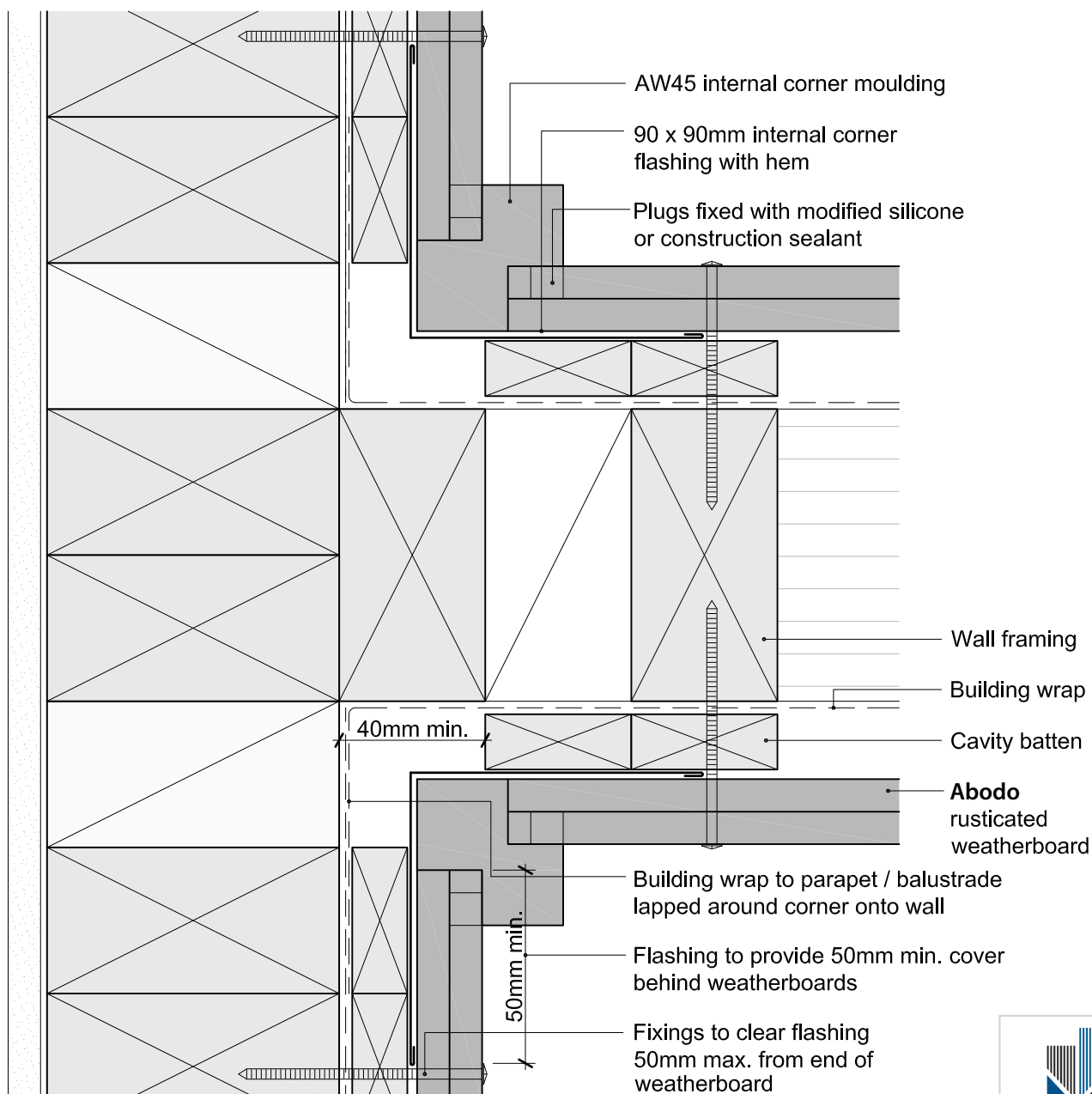
Date
20/06/15



© 2013 Abodo Wood Ltd, PO Box 8961, Symonds St, Auckland 1052
Ph 64 9) 302 9555 Fx 64 9) 302 9550
www.abodo.co.nz

Drawing No.
R.C.F.44

1. Weatherboards must be coated with at least one coat all sides prior to fixing.
2. Fixing points must be pre-drilled minimum 1mm smaller than the fastener.
3. Cut ends and exposed timber must be sealed with an approved coating or end seal.



Rusticated Weatherboard

Parapet Balustrade Intersection With Wall - Moulding

Scale
1:2

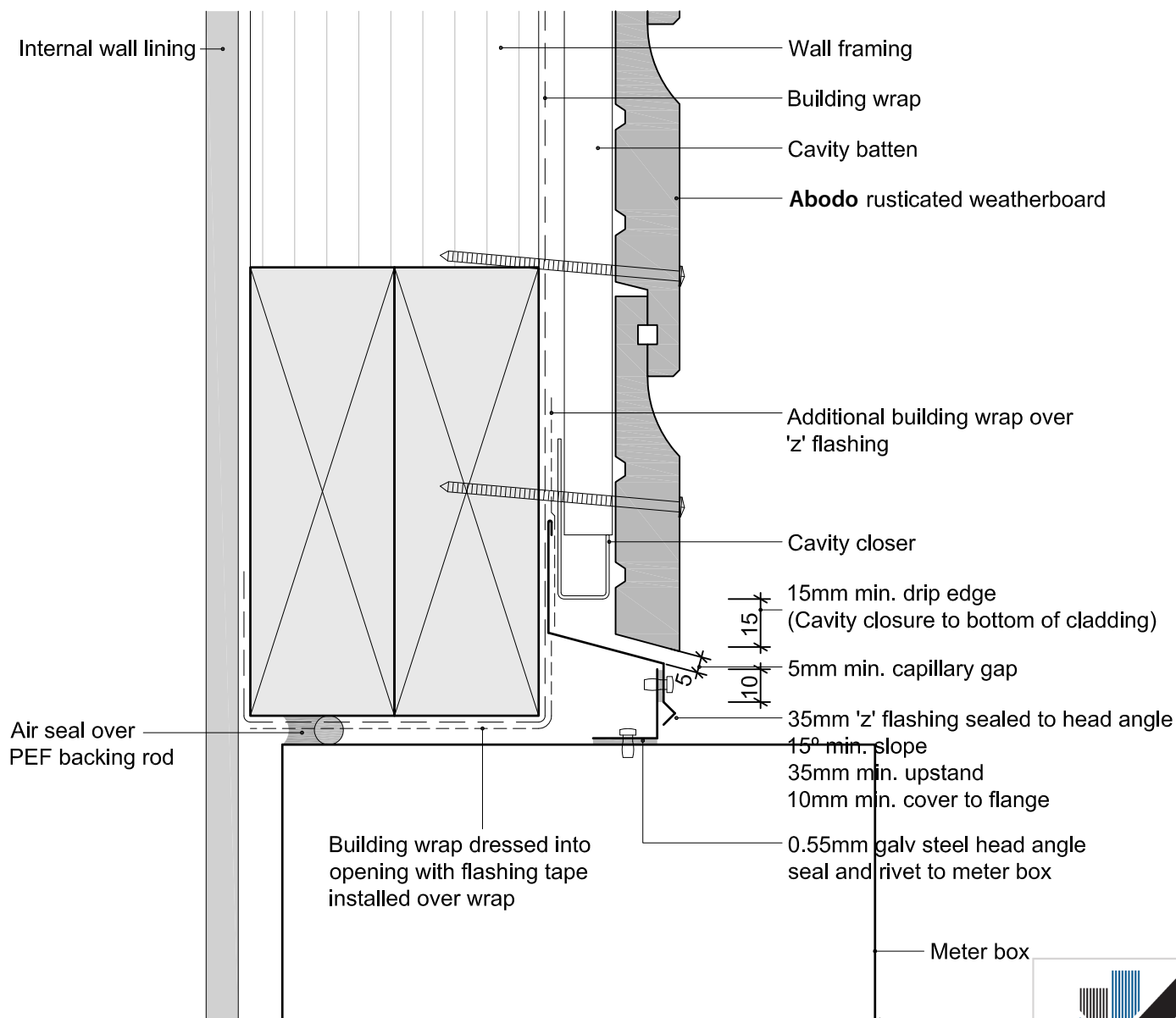
Date
3/10/13



© 2013 Abodo Wood Ltd, PO Box 8961, Symonds St, Auckland 1052
Ph 64 9) 302 9555 Fx 64 9) 302 9550
www.abodo.co.nz

Drawing No.
R.C.F.45

1. Weatherboards must be coated with at least one coat all sides prior to fixing.
2. Fixing points must be pre-drilled minimum 1mm smaller than the fastener.
3. Cut ends and exposed timber must be sealed with an approved coating or end seal.



CMA-CM40070

Rusticated Weatherboard

Meter Box Head

Scale
1:2

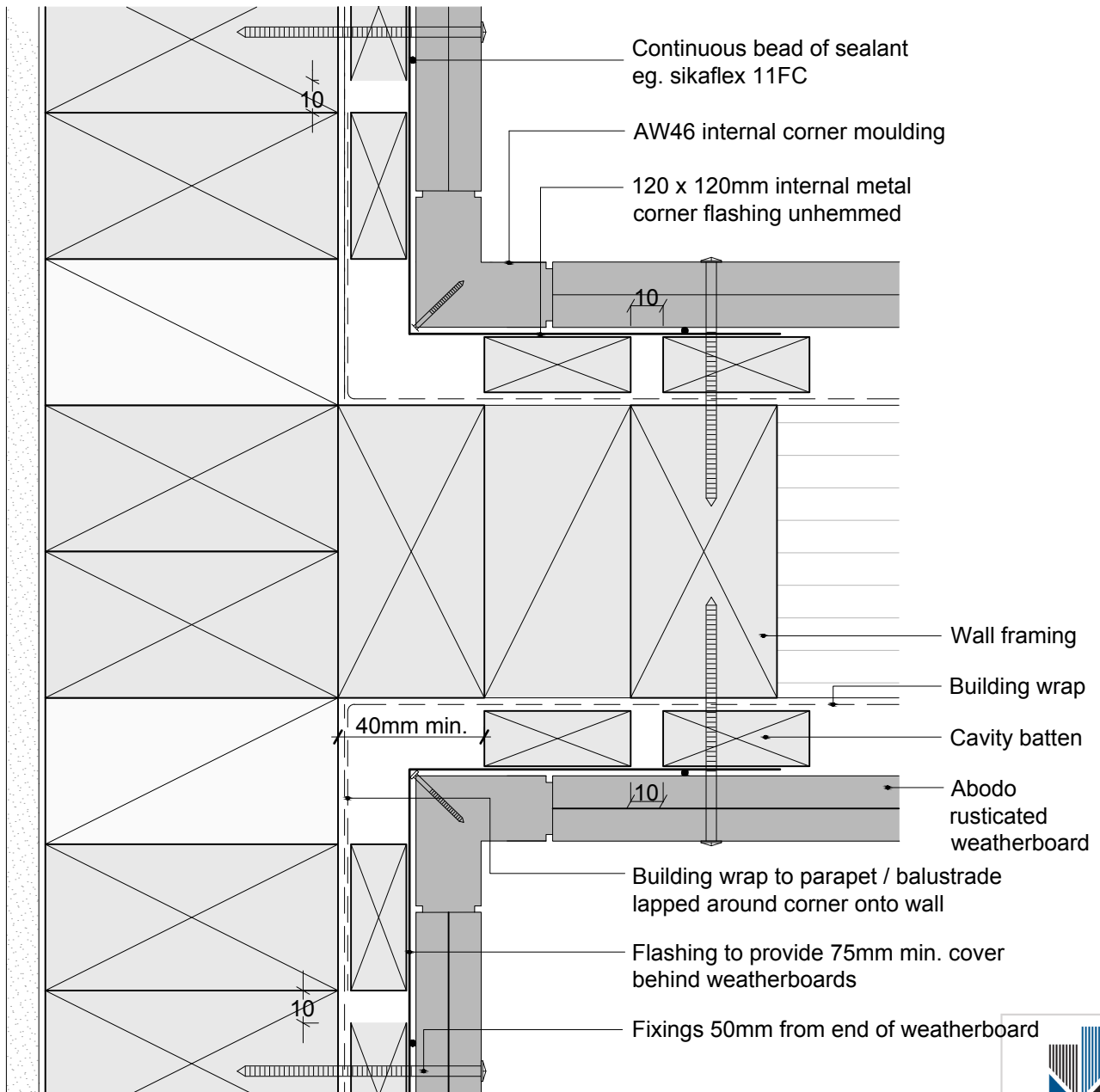
Date
27/09/14



© 2013 Abodo Wood Ltd, PO Box 8961, Symonds St, Auckland 1052
Ph 64 9) 302 9555 Fx 64 9) 302 9550
www.abodo.co.nz

Drawing No.
R.C.F.51

1. Weatherboards must be coated with at least one coat all sides prior to fixing.
2. Fixing points must be pre-drilled minimum 1mm smaller than the fastener.
3. Cut ends and exposed timber must be sealed with an approved coating or end seal.



CMA-CM40070

Rusticated Weatherboard

Parapet Balustrade Intersection With Wall -AW46 Moulding

Scale

1:2

Date

3/10/13



© 2013 Abodo Wood Ltd, PO Box 8961, Symonds St, Auckland 1052

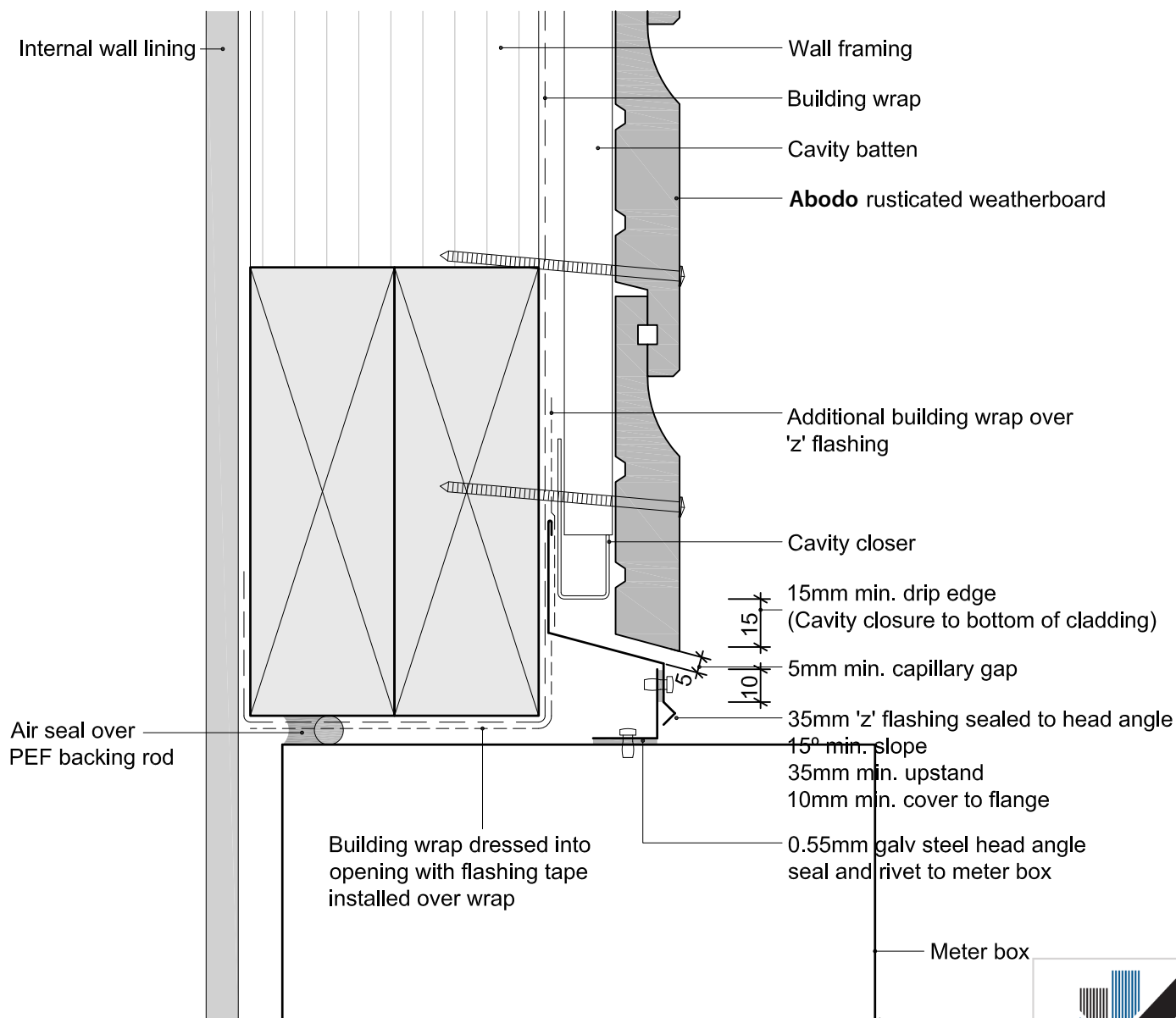
Ph 64 9) 302 9555 Fx 64 9) 302 9550

www.abodo.co.nz

Drawing No.

R.C.F.46

1. Weatherboards must be coated with at least one coat all sides prior to fixing.
2. Fixing points must be pre-drilled minimum 1mm smaller than the fastener.
3. Cut ends and exposed timber must be sealed with an approved coating or end seal.



CMA-CM40070

Rusticated Weatherboard

Meter Box Head

Scale
1:2

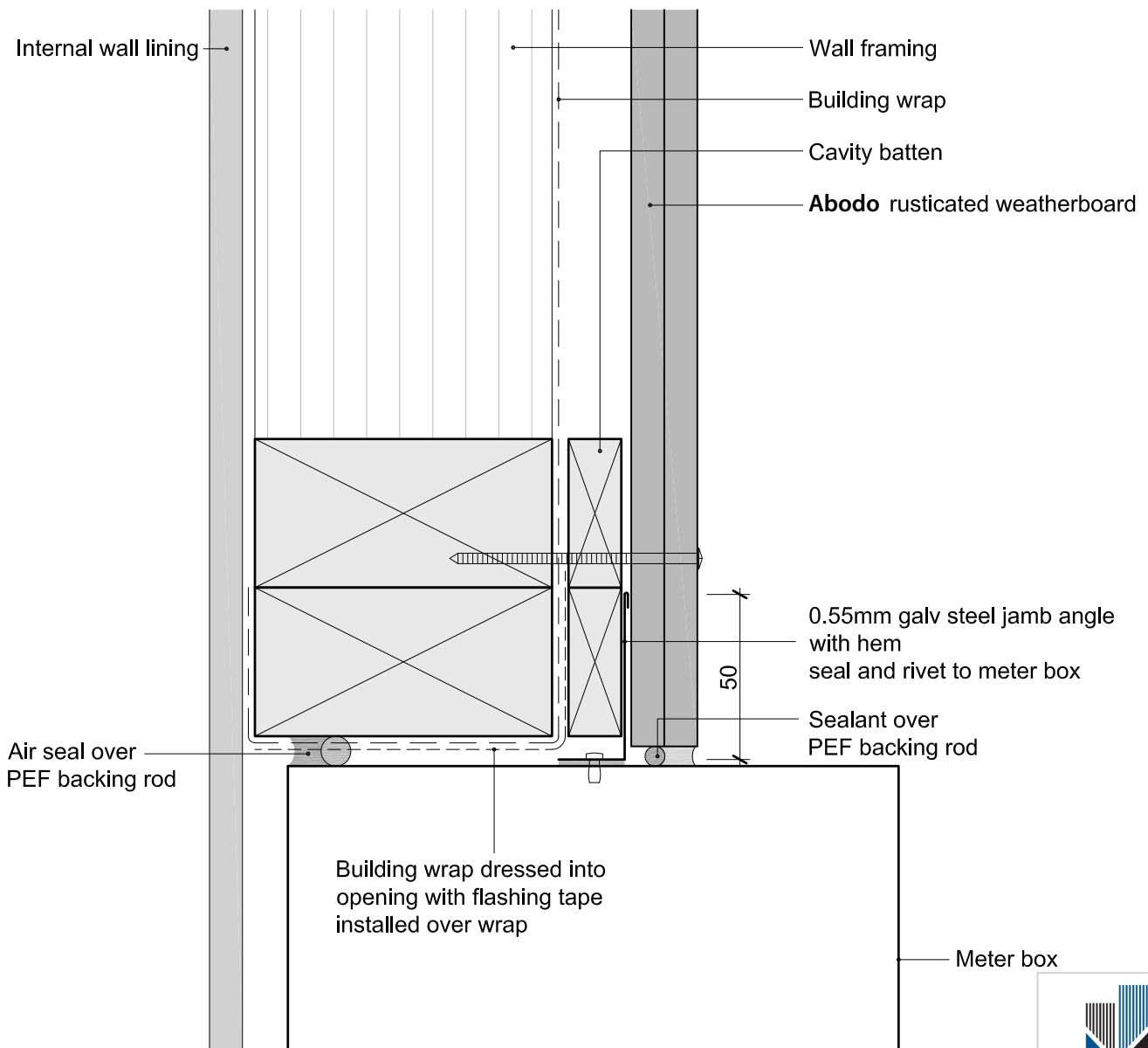
Date
27/09/14



© 2013 Abodo Wood Ltd, PO Box 8961, Symonds St, Auckland 1052
Ph 64 9) 302 9555 Fx 64 9) 302 9550
www.abodo.co.nz

Drawing No.
R.C.F.51

1. Weatherboards must be coated with at least one coat all sides prior to fixing.
2. Fixing points must be pre-drilled minimum 1mm smaller than the fastener.
3. Cut ends and exposed timber must be sealed with an approved coating or end seal.



Rusticated Weatherboard

Meter Box Jamb

Scale
1:2

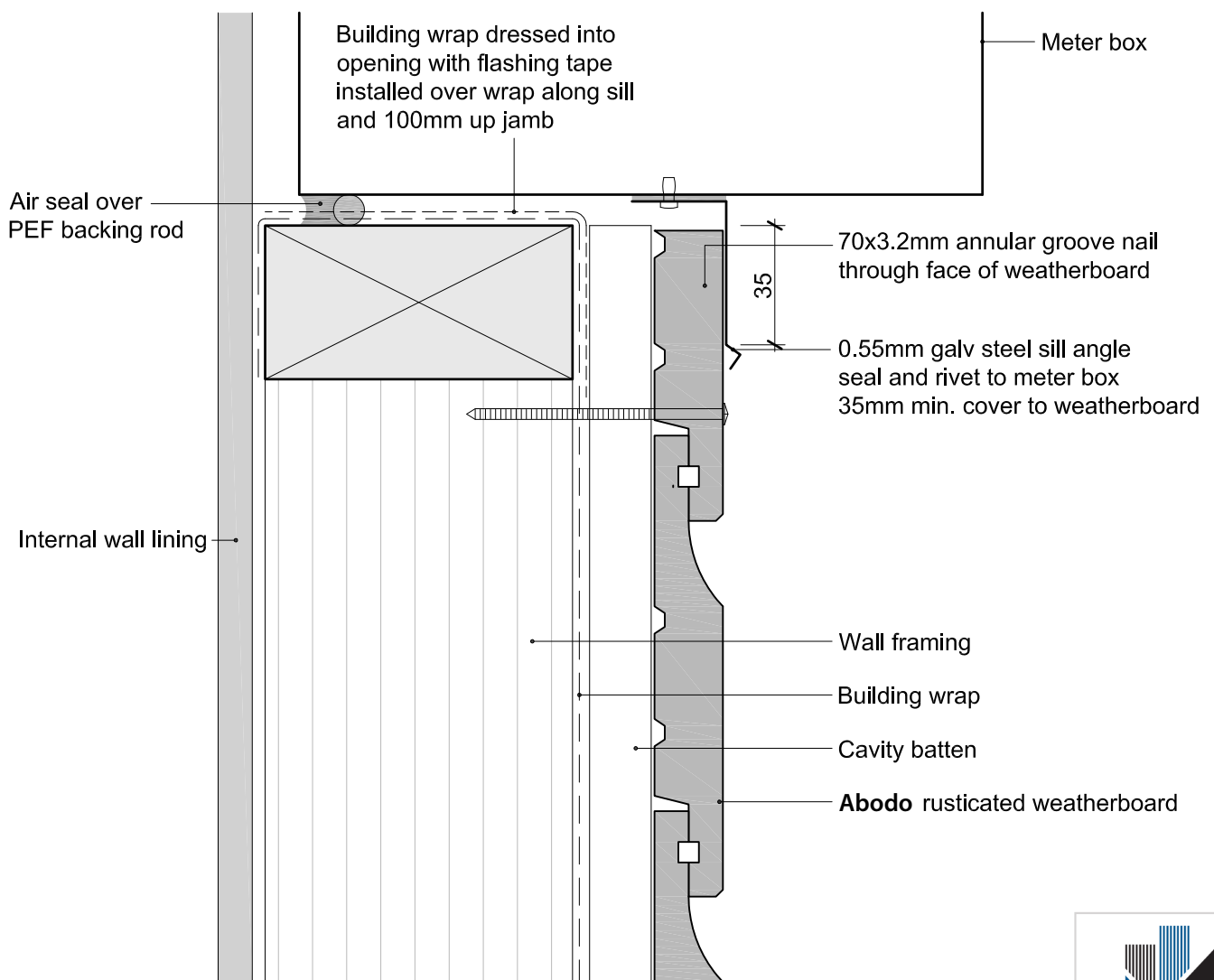
Date
3/10/13



© 2013 Abodo Wood Ltd, PO Box 8961, Symonds St, Auckland 1052
Ph 64 9) 302 9555 Fx 64 9) 302 9550
www.abodo.co.nz

Drawing No.
R.C.F.52

1. Weatherboards must be coated with at least one coat all sides prior to fixing.
2. Fixing points must be pre-drilled minimum 1mm smaller than the fastener.
3. Cut ends and exposed timber must be sealed with an approved coating or end seal.



Rusticated Weatherboard

Meter Box Sill

Scale
1:2

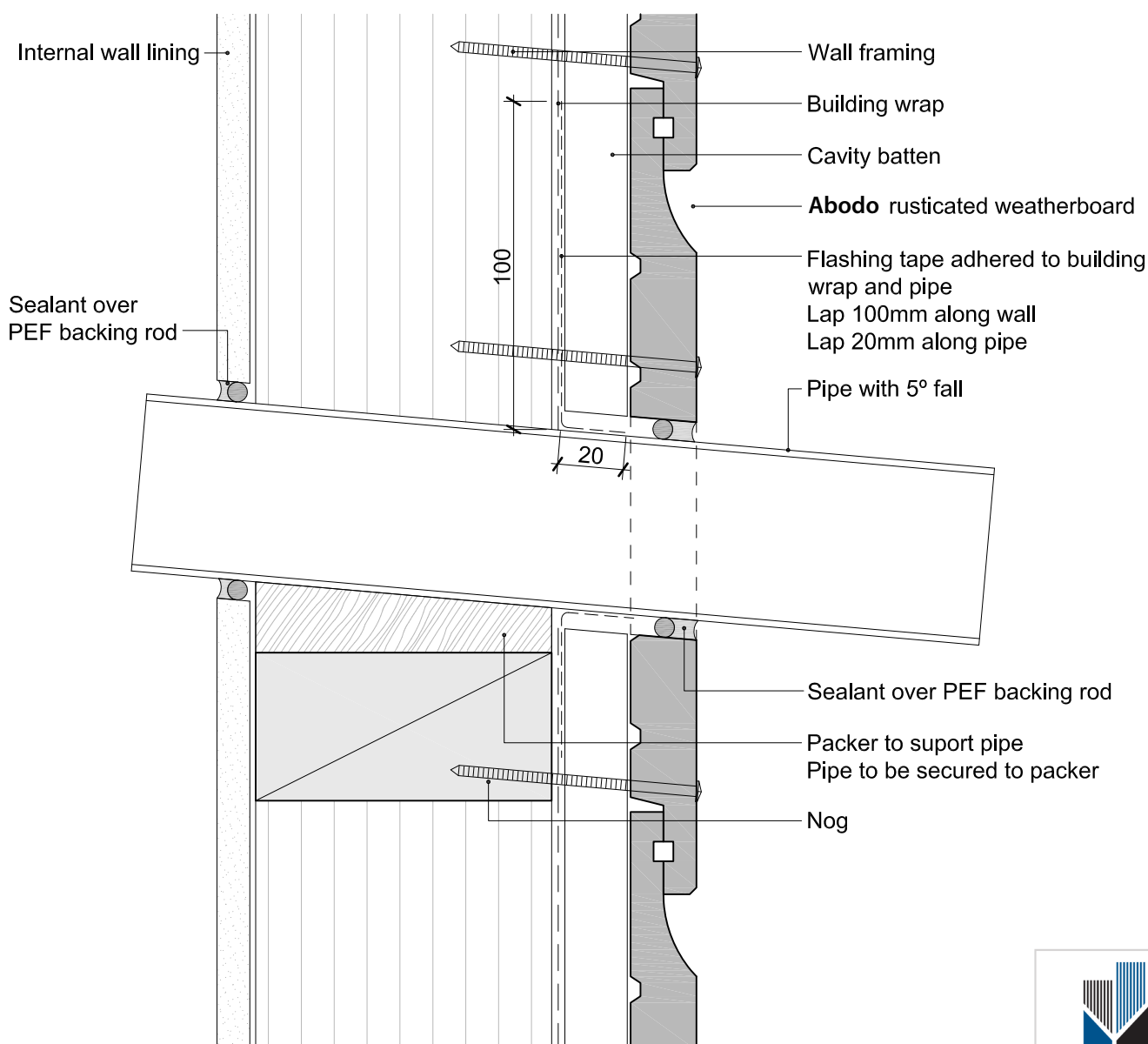
Date
3/10/13



© 2013 Abodo Wood Ltd, PO Box 8961, Symonds St, Auckland 1052
Ph 64 9) 302 9555 Fx 64 9) 302 9550
www.abodo.co.nz

Drawing No.
R.C.F.53

1. Weatherboards must be coated with at least one coat all sides prior to fixing.
2. Fixing points must be pre-drilled minimum 1mm smaller than the fastener.
3. Cut ends and exposed timber must be sealed with an approved coating or end seal.



Rusticated Weatherboard

Pipe Penetration

Scale
1:2

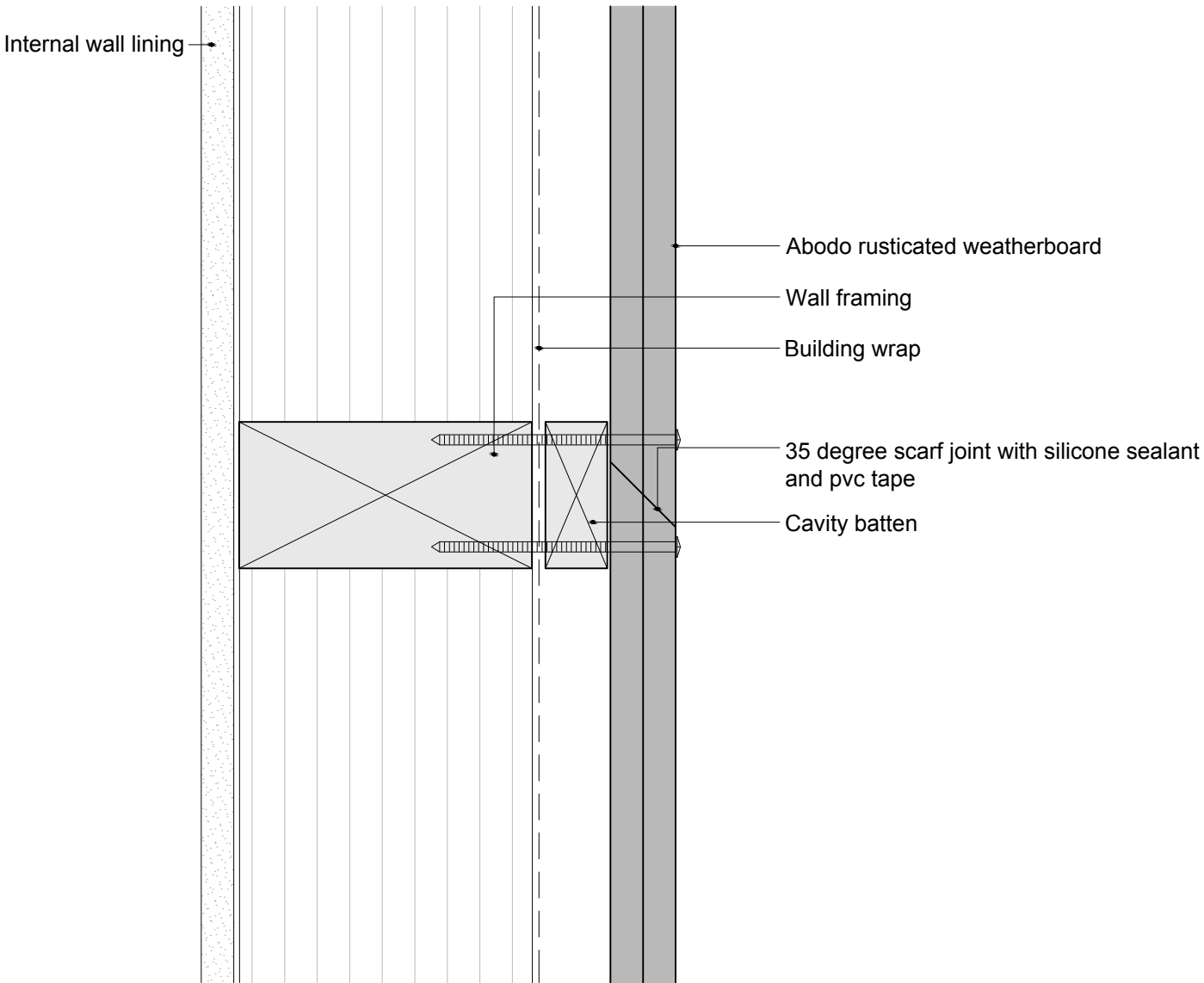
Date
3/10/13




© 2013 Abodo Wood Ltd, PO Box 8961, Symonds St, Auckland 1052
Ph 64 9) 302 9555 Fx 64 9) 302 9550
www.abodo.co.nz

Drawing No.
R.C.F.54

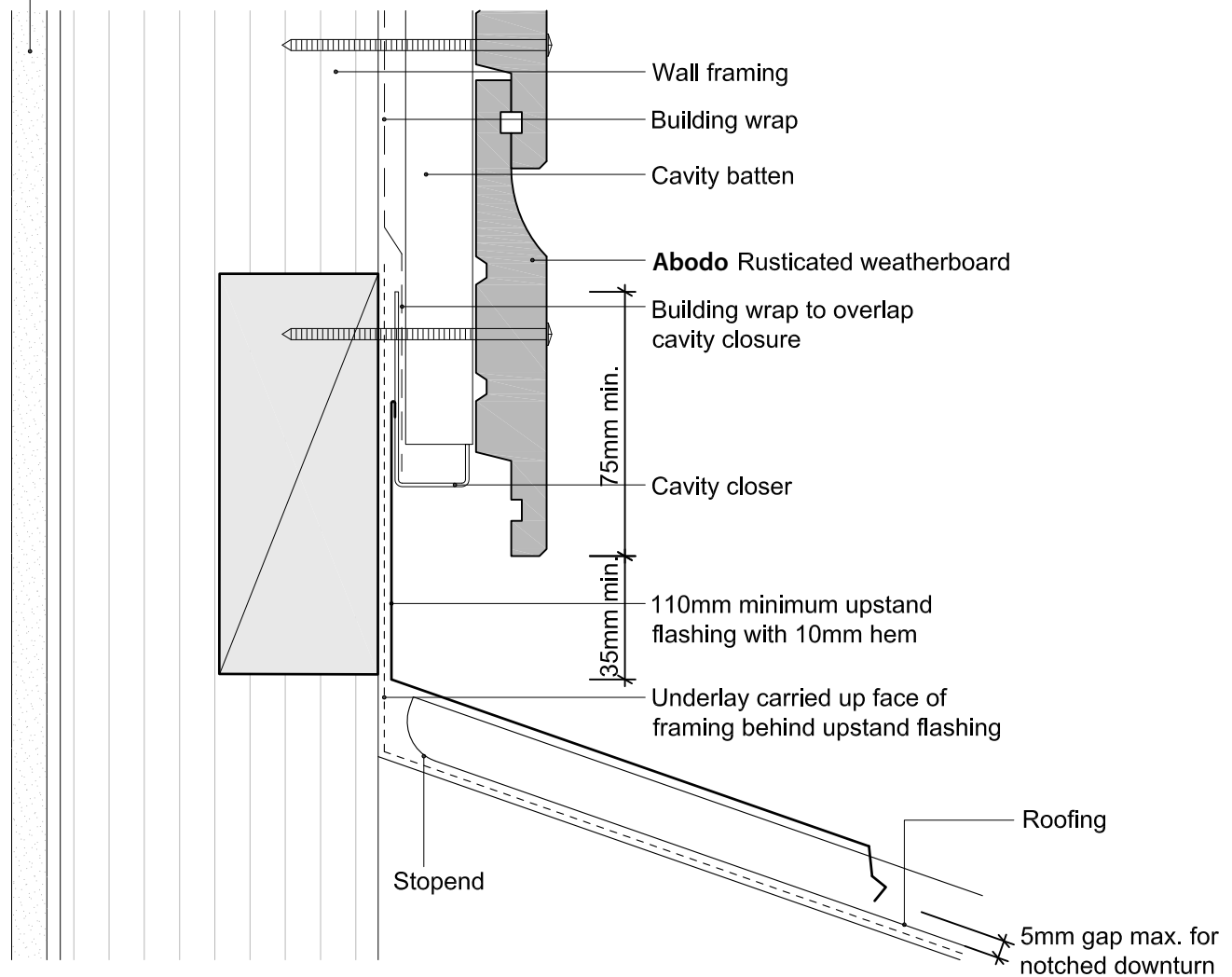
1. Weatherboards must be coated with at least one coat all sides prior to fixing.
2. Fixing points must be pre-drilled minimum 1mm smaller than the fastener.
3. Cut ends and exposed timber must be sealed with an approved coating or end seal.



<div>Rusticated Weatherboard</div> <div>Weatherboard Join</div>	<div>Scale</div> <div>1:2</div>	<div>Date</div> <div>3/10/13</div>
<div><div><div> ABODO</div><div>© 2013 Abodo Wood Ltd, PO Box 8961, Symonds St, Auckland 1052 Ph 64 9) 302 9555 Fx 64 9) 302 9550 www.abodo.co.nz</div></div></div>	<div>Drawing No.</div> <div>R.C.F.55</div>	


1. Weatherboards must be coated with at least one coat all sides prior to fixing.
2. Fixing points must be pre-drilled minimum 1mm smaller than the fastener.
3. Cut ends and exposed timber must be sealed with an approved coating or end seal.

Internal wall lining



Note: refer to NZBC E2/AS1 Table 7 for apron flashing cover over roofing



 CMA-CM40070

Rusticated Weatherboard

Apron Flashing

Scale
1:2

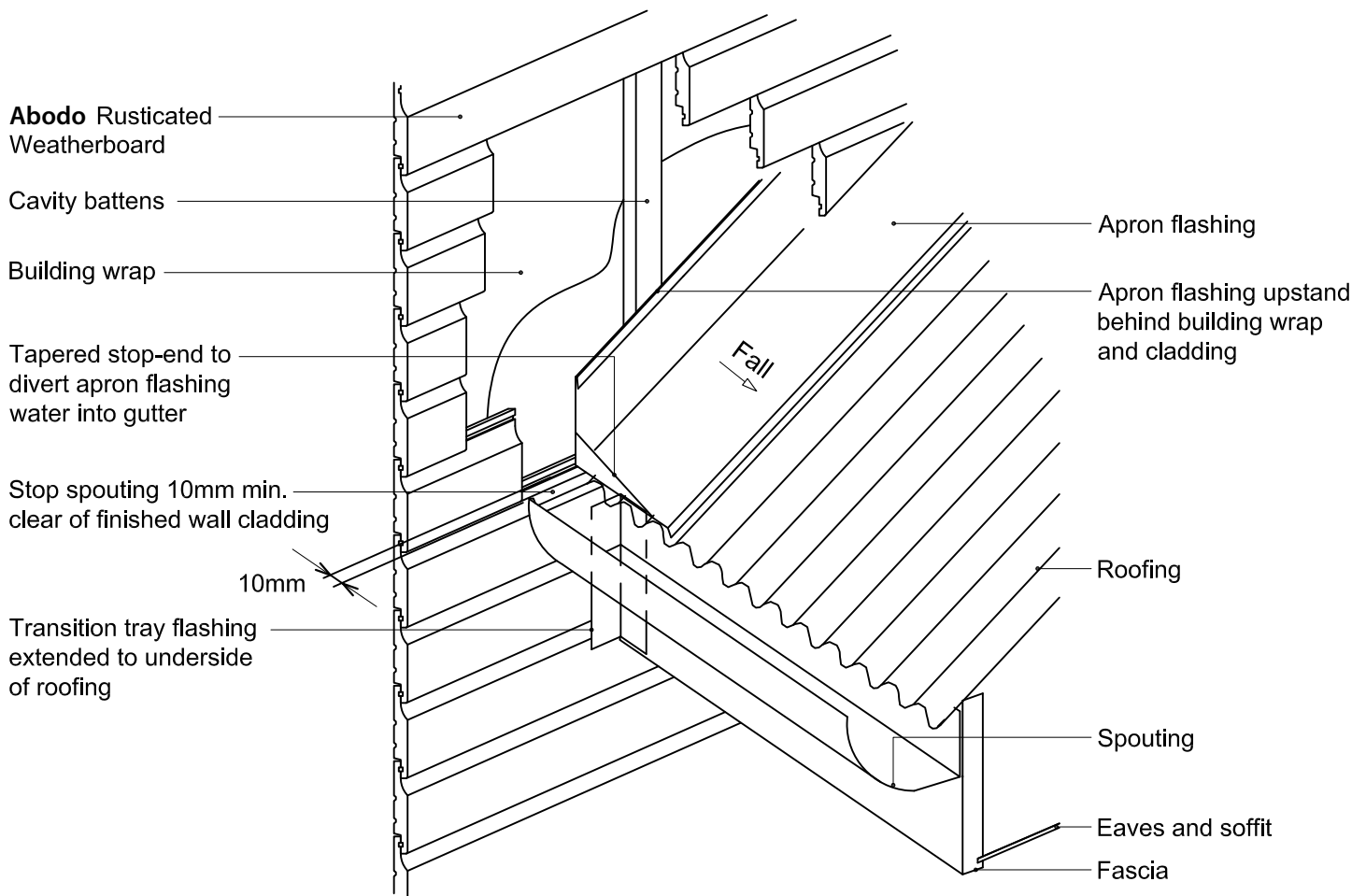
Date
30/07/14



© 2013 Abodo Wood Ltd, PO Box 8961, Symonds St, Auckland 1052
Ph 64 9) 302 9555 Fx 64 9) 302 9550
www.abodo.co.nz

Drawing No.
R.C.F.57

1. Weatherboards must be coated with at least one coat all sides prior to fixing.
2. Fixing points must be pre-drilled minimum 1mm smaller than the fastener.
3. Cut ends and exposed timber must be sealed with an approved coating or end seal.



Note: refer to NZBC E2/AS1 Table 7 for apron flashing cover over roofing



Rusticated Weatherboard

Roof Kick-out Flashing Cavity Detail

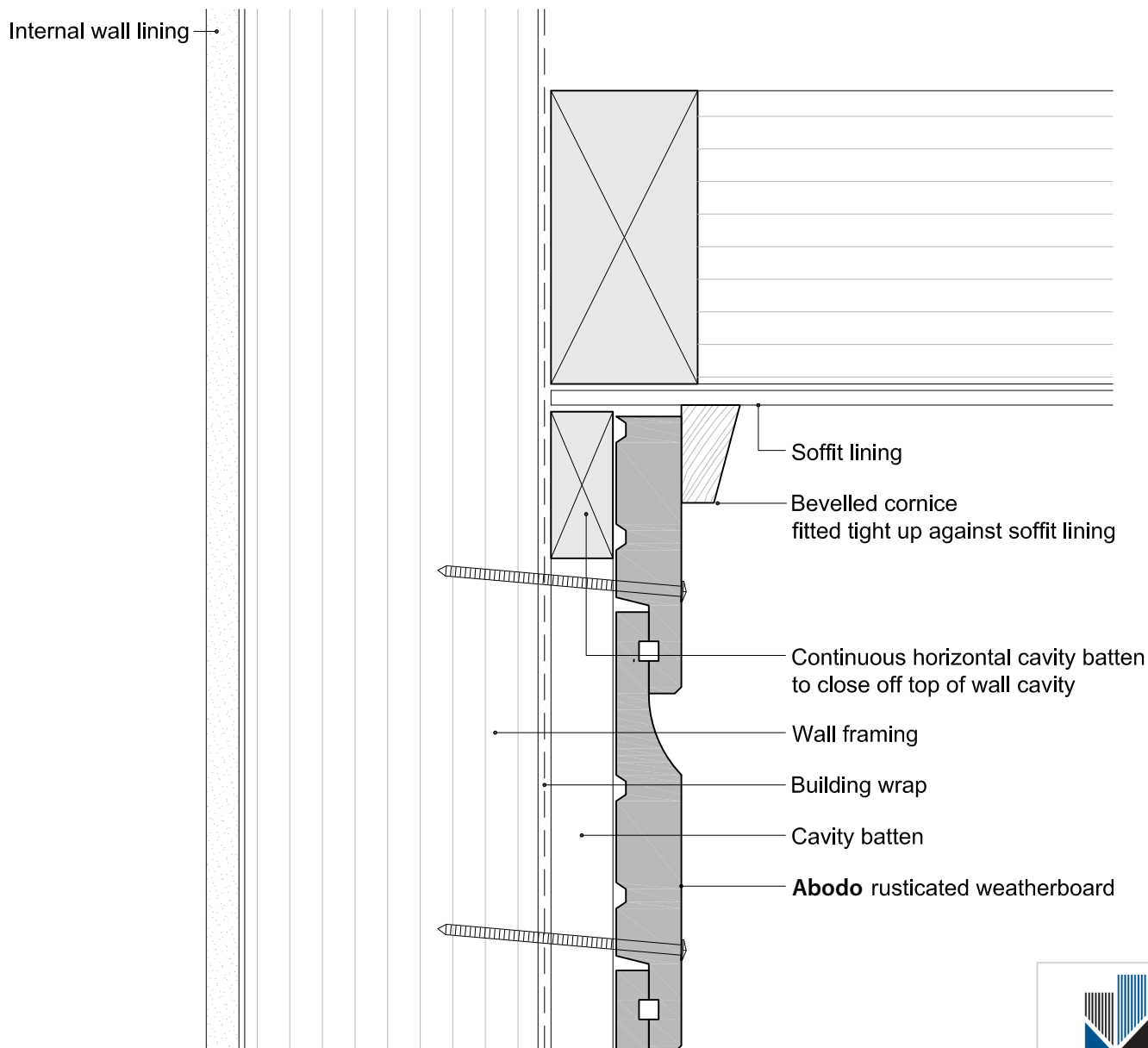
Date
30/07/14



© 2013 Abodo Wood Ltd, PO Box 8961, Symonds St, Auckland 1052
Ph 64 9) 302 9555 Fx 64 9) 302 9550
www.abodo.co.nz

Drawing No.
R.C.F.58

1. Weatherboards must be coated with at least one coat all sides prior to fixing.
2. Fixing points must be pre-drilled minimum 1mm smaller than the fastener.
3. Cut ends and exposed timber must be sealed with an approved coating or end seal.



Rusticated Weatherboard

Top Of Wall - Flat Soffit

Scale
1:2

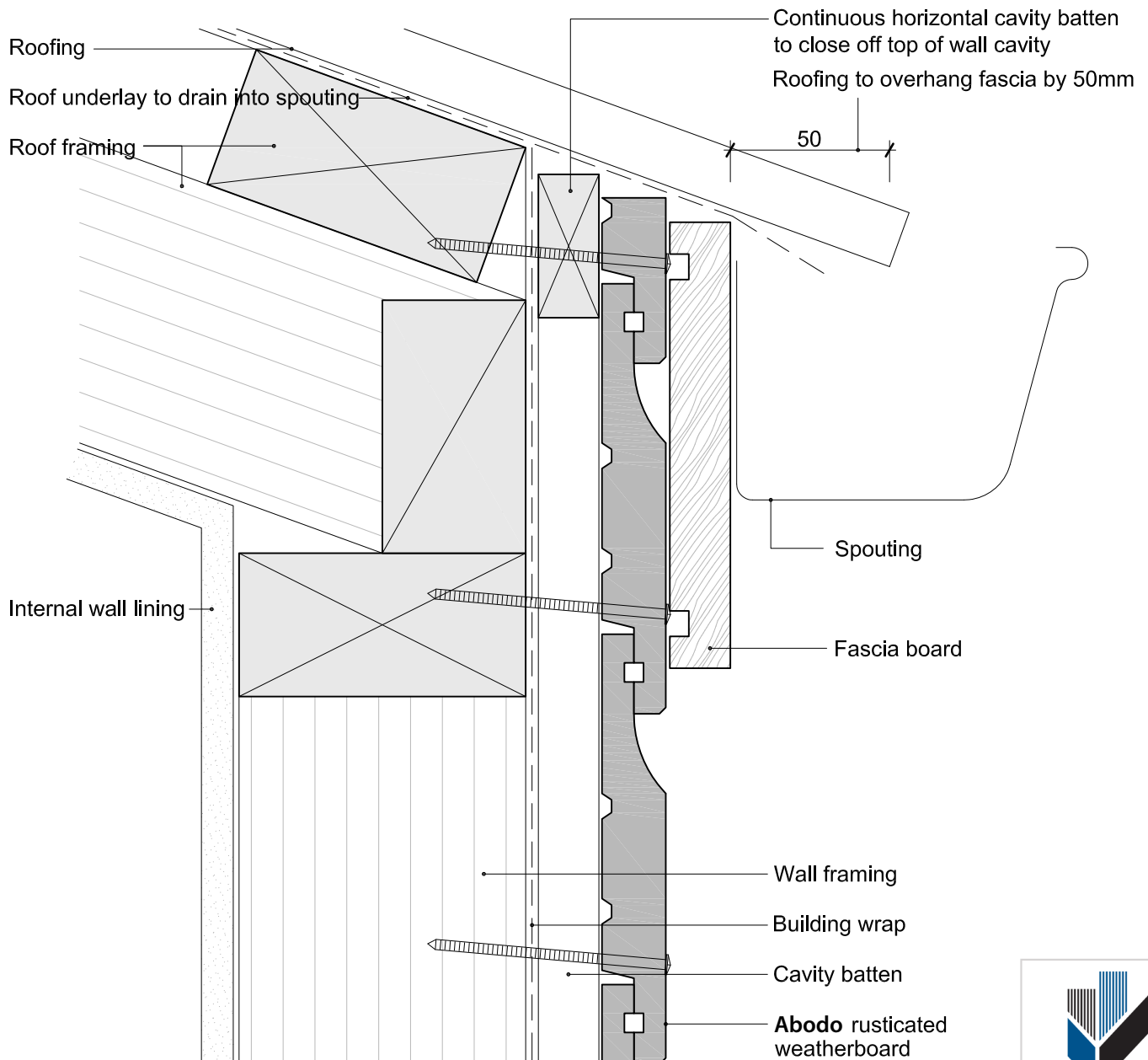
Date
3/10/13



© 2013 Abodo Wood Ltd, PO Box 8961, Symonds St, Auckland 1052
Ph 64 9) 302 9555 Fx 64 9) 302 9550
www.abodo.co.nz

Drawing No.
R.C.F.61

1. Weatherboards must be coated with at least one coat all sides prior to fixing.
2. Fixing points must be pre-drilled minimum 1mm smaller than the fastener.
3. Cut ends and exposed timber must be sealed with an approved coating or end seal.



Rusticated Weatherboard

Top Of Wall - No Soffit

Scale
1:2

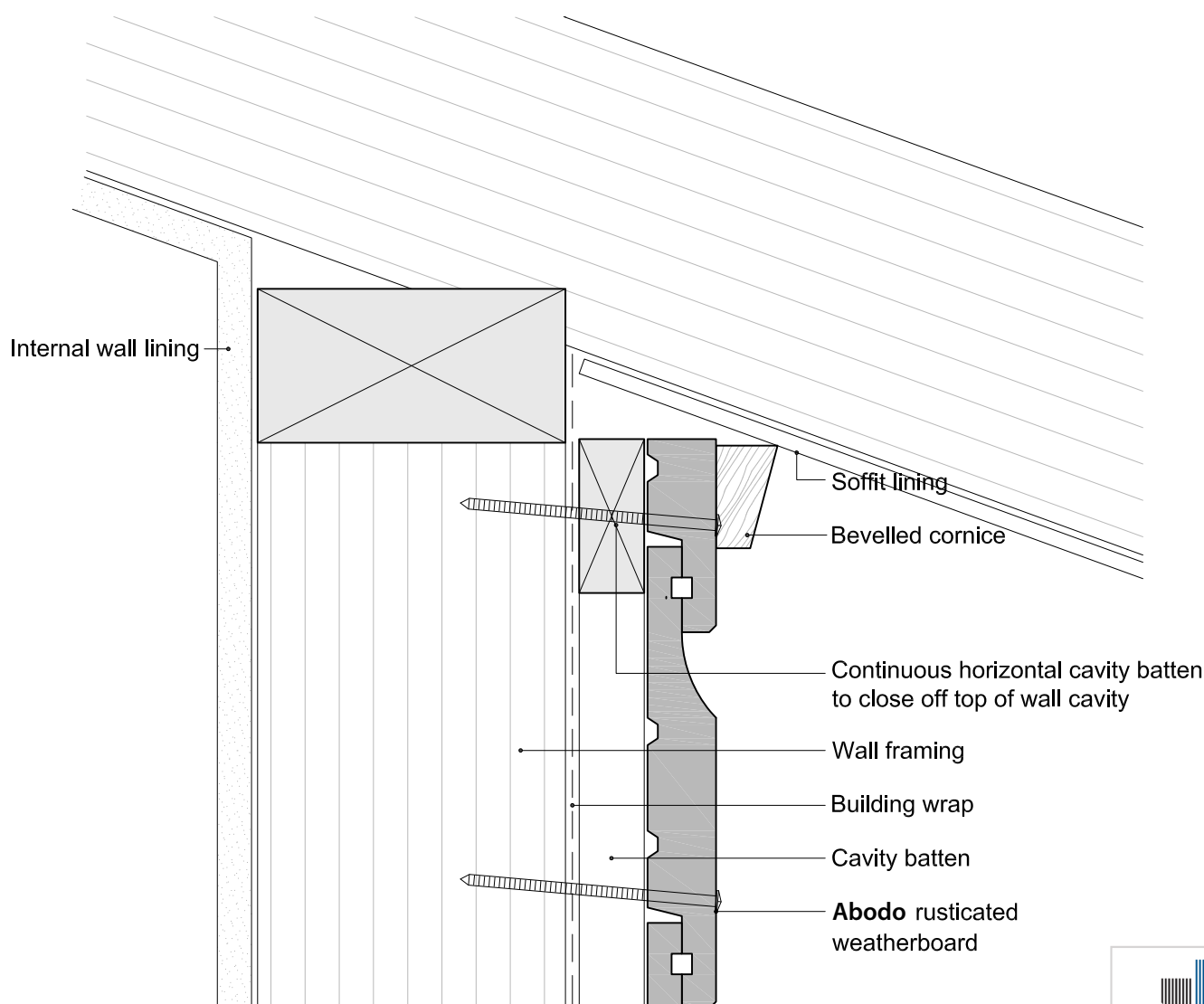
Date
3/10/13



© 2013 Abodo Wood Ltd, PO Box 8961, Symonds St, Auckland 1052
Ph 64 9) 302 9555 Fx 64 9) 302 9550
www.abodo.co.nz

Drawing No.
R.C.F.62

1. Weatherboards must be coated with at least one coat all sides prior to fixing.
2. Fixing points must be pre-drilled minimum 1mm smaller than the fastener.
3. Cut ends and exposed timber must be sealed with an approved coating or end seal.



Rusticated Weatherboard

Top Of Wall - Sloping Soffit

Scale
1:2

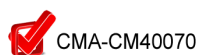
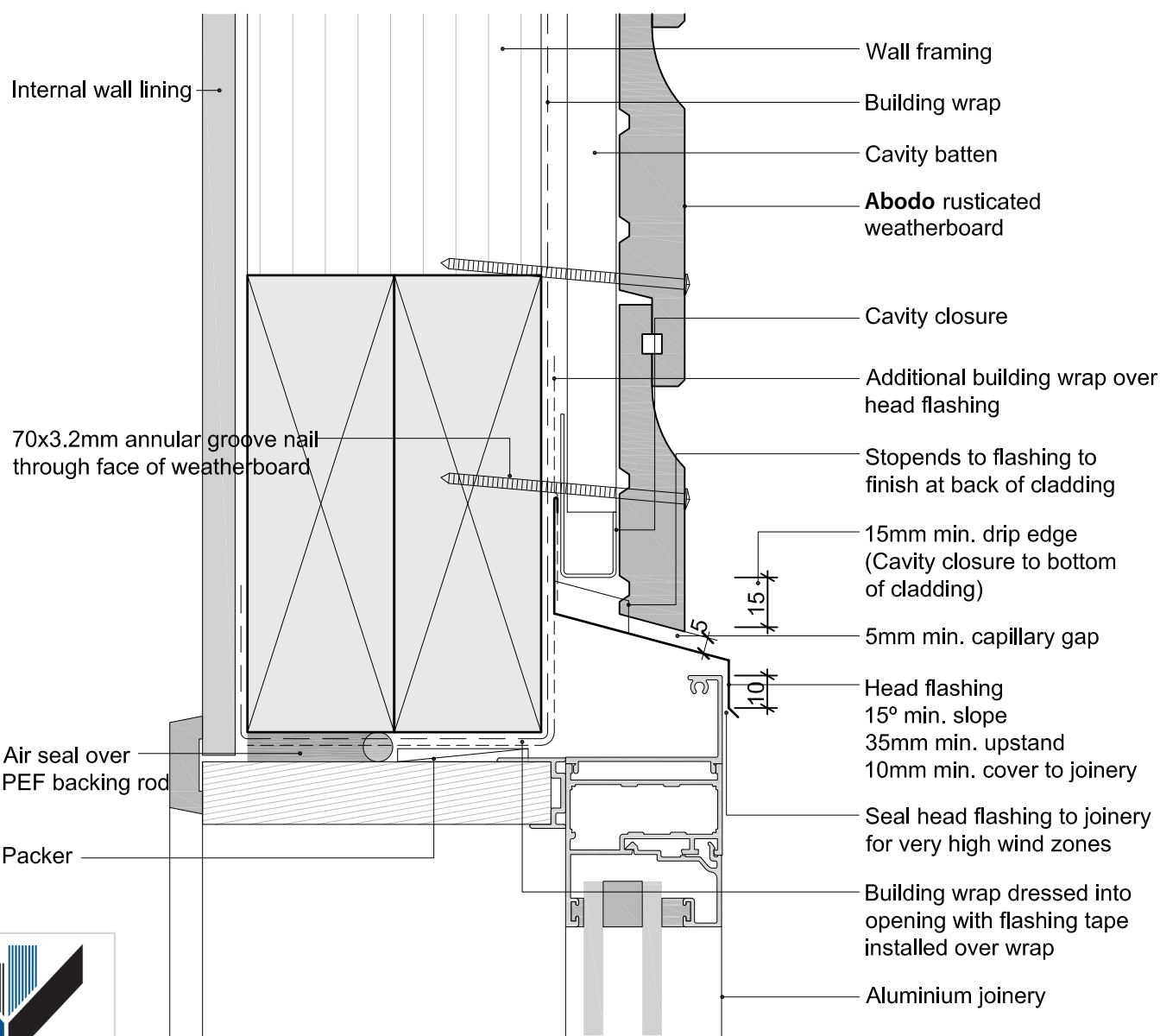
Date
3/10/13



© 2013 Abodo Wood Ltd, PO Box 8961, Symonds St, Auckland 1052
Ph 64 9) 302 9555 Fx 64 9) 302 9550
www.abodo.co.nz

Drawing No.
R.C.F.63

1. Weatherboards must be coated with at least one coat all sides prior to fixing.
2. Fixing points must be pre-drilled minimum 1mm smaller than the fastener.
3. Cut ends and exposed timber must be sealed with an approved coating or end seal.



Rusticated Weatherboard

Window Head

Scale

1:2

Date

27/09/14

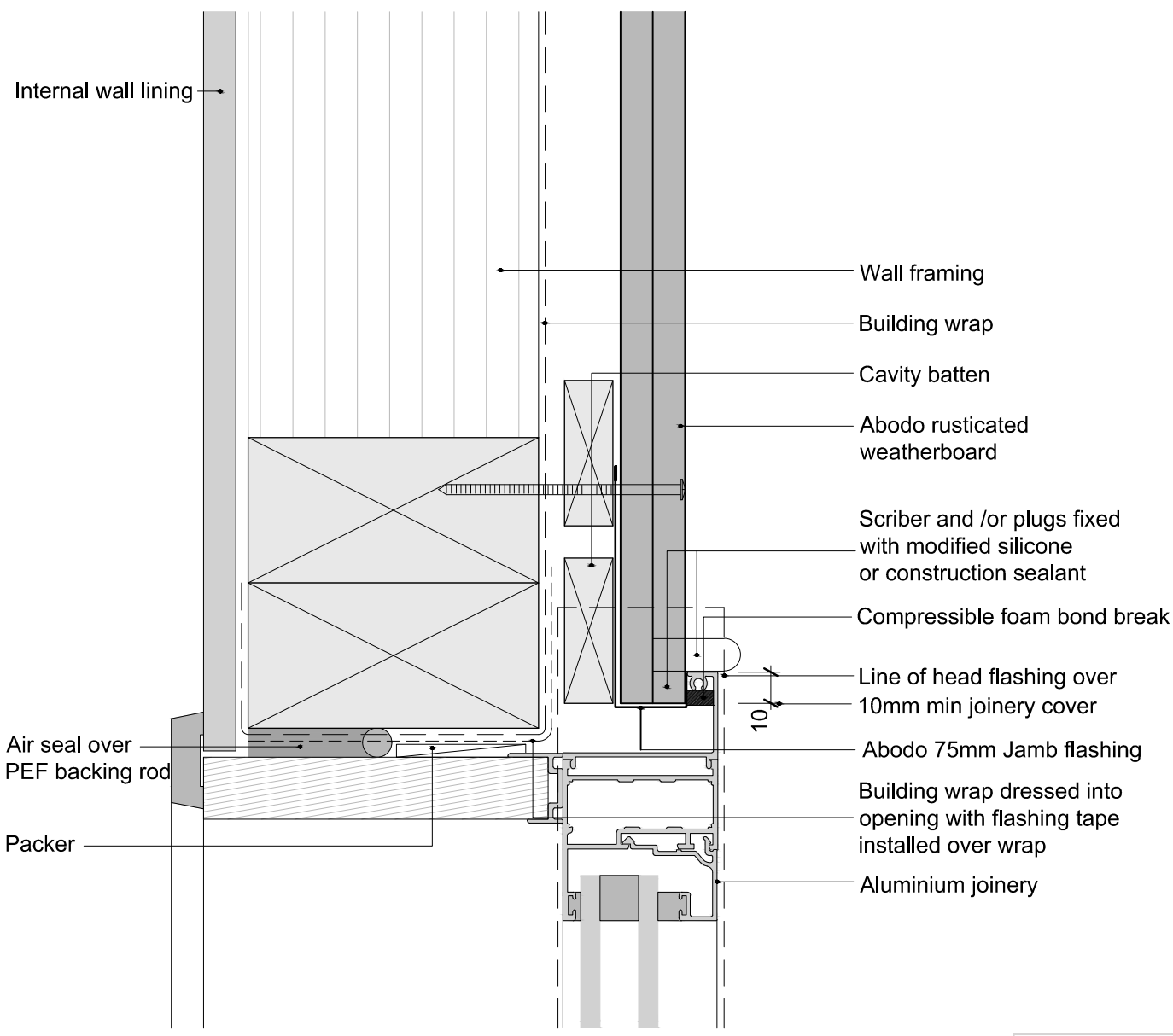


© 2013 Abodo Wood Ltd, PO Box 8961, Symonds St, Auckland 1052
Ph 64 9) 302 9555 Fx 64 9) 302 9550
www.abodo.co.nz

Drawing No.

R.C.F.71

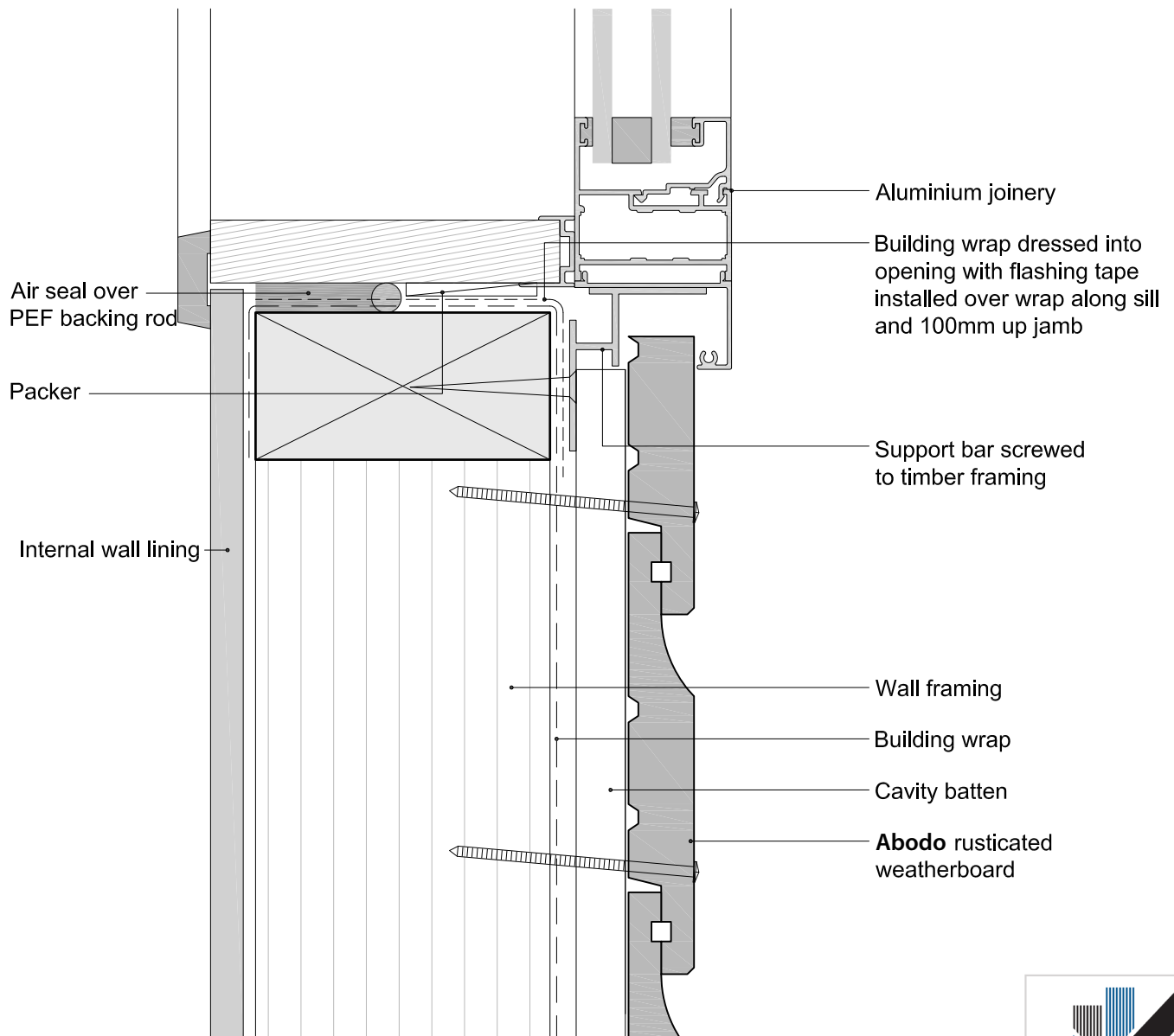
1. Weatherboards must be coated with at least one coat all sides prior to fixing.
2. Fixing points must be pre-drilled minimum 1mm smaller than the fastener.
3. Cut ends and exposed timber must be sealed with an approved coating or end seal.



Rusticated Weatherboard
Window Jamb

Scale 1:2	Date 3/10/13
---------------------	------------------------

1. Weatherboards must be coated with at least one coat all sides prior to fixing.
2. Fixing points must be pre-drilled minimum 1mm smaller than the fastener.
3. Cut ends and exposed timber must be sealed with an approved coating or end seal.



Rusticated Weatherboard

Window Sill

Scale
1:2

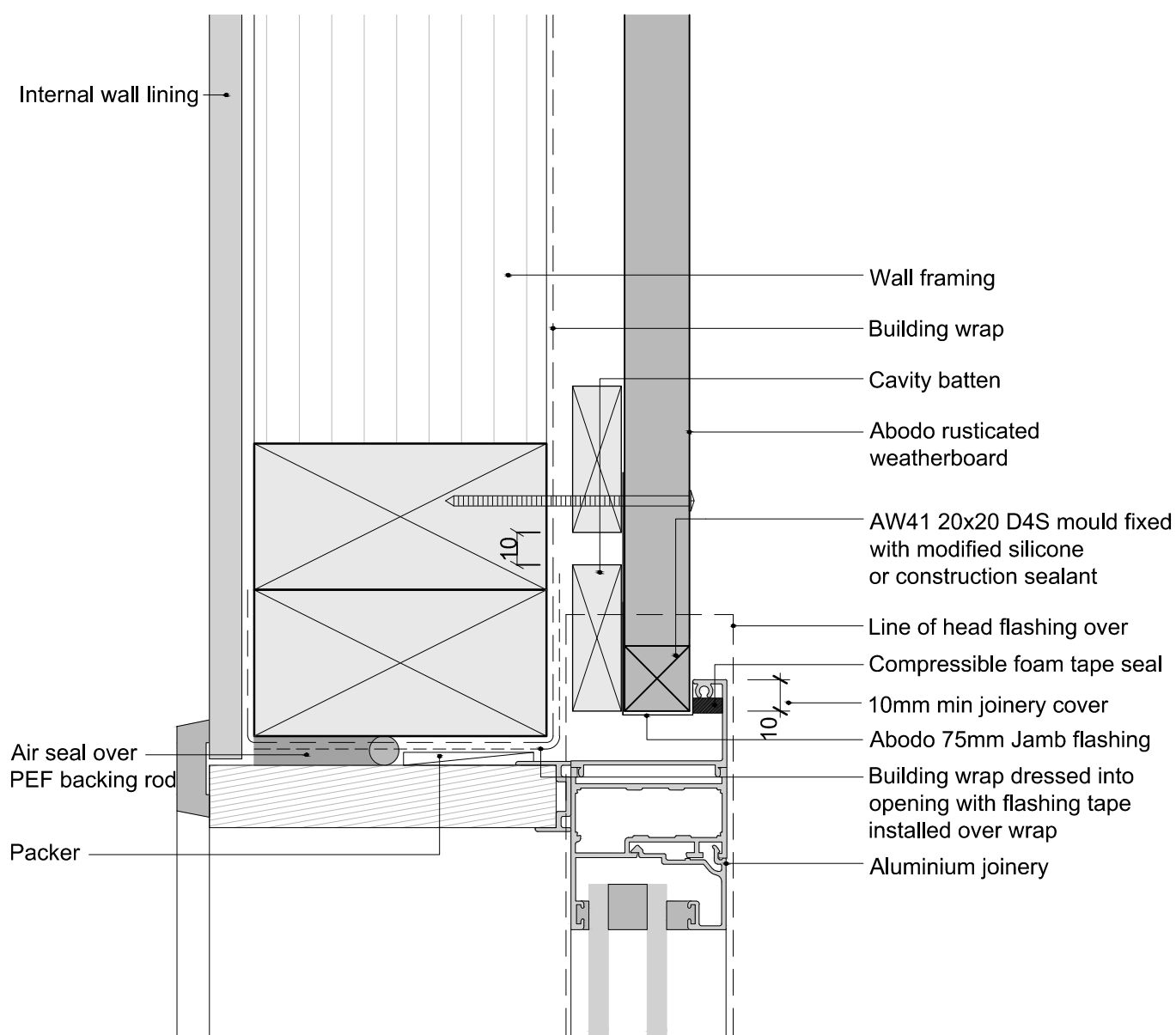
Date
3/10/13



© 2013 Abodo Wood Ltd, PO Box 8961, Symonds St, Auckland 1052
Ph 64 9) 302 9555 Fx 64 9) 302 9550
www.abodo.co.nz

Drawing No.
R.C.F.73

1. Weatherboards must be coated with at least one coat all sides prior to fixing.
2. Fixing points must be pre-drilled minimum 1mm smaller than the fastener.
3. Cut ends and exposed timber must be sealed with an approved coating or end seal.



 CODEMARK™

 CMA-CM40070

Rusticated Weatherboard

Window Jamb-Option 2

Scale

1:2

Date

20/06/15



© 2013 Abodo Wood Ltd, PO Box 8961, Symonds St, Auckland 1052

Ph 64 9) 302 9555 Fx 64 9) 302 9550

www.abodo.co.nz

Drawing No.

R.C.F.74