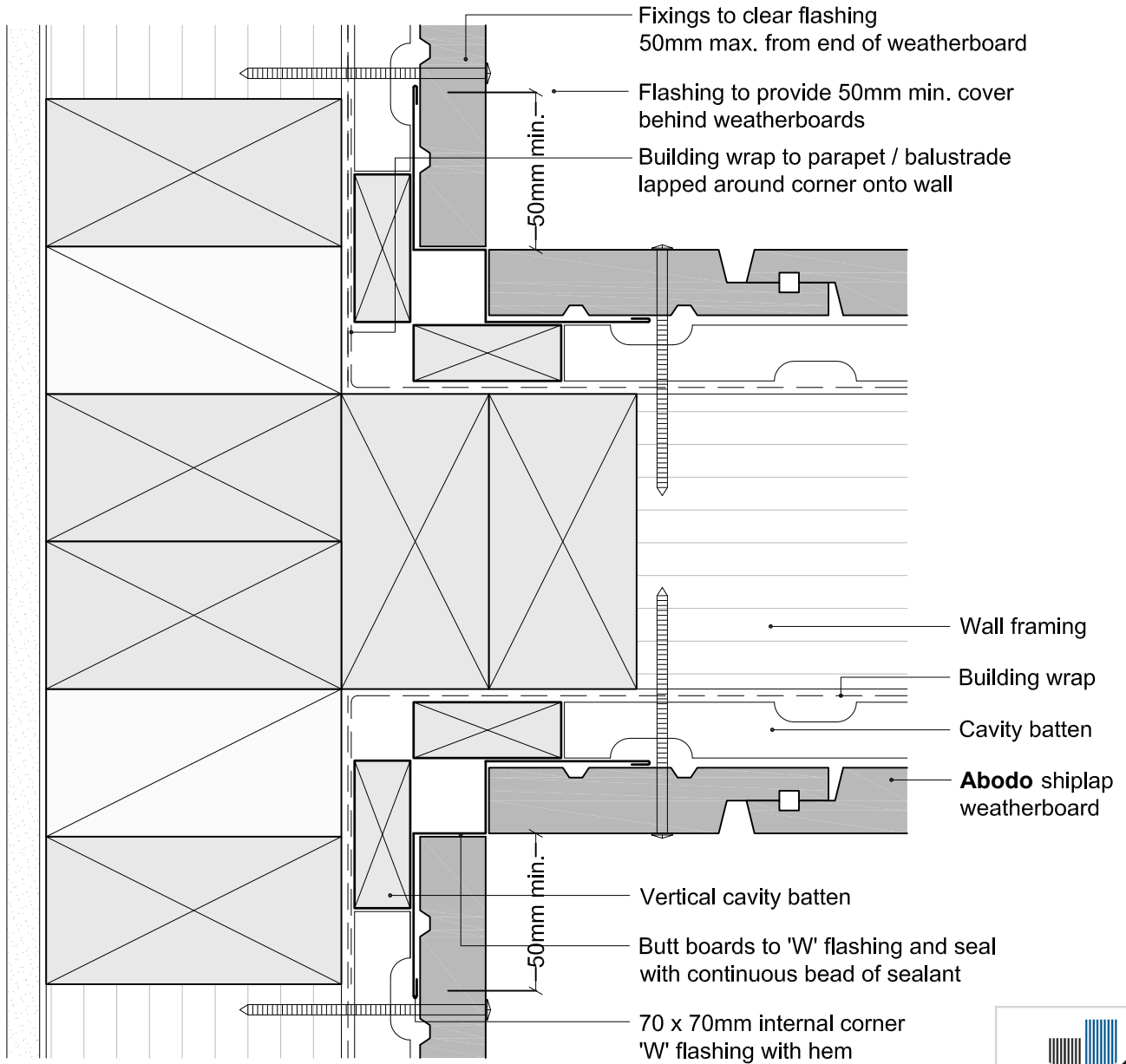


1. Weatherboards must be coated with at least one coat all sides prior to fixing.
2. Fixing points must be pre-drilled minimum 1mm smaller than the fastener.
3. Cut ends and exposed timber must be sealed with an approved coating or end seal.



Vertical Shiplap Weatherboard

Parapet Balustrade Intersection With Wall - Flashing

Scale

1:2

Date

08/12/14



© 2013 Abodo Wood Ltd, PO Box 8961, Symonds St, Auckland 1052

Ph 64 9) 302 9555 Fx 64 9) 302 9550

www.abodo.co.nz

Drawing No.

V.C.F.46