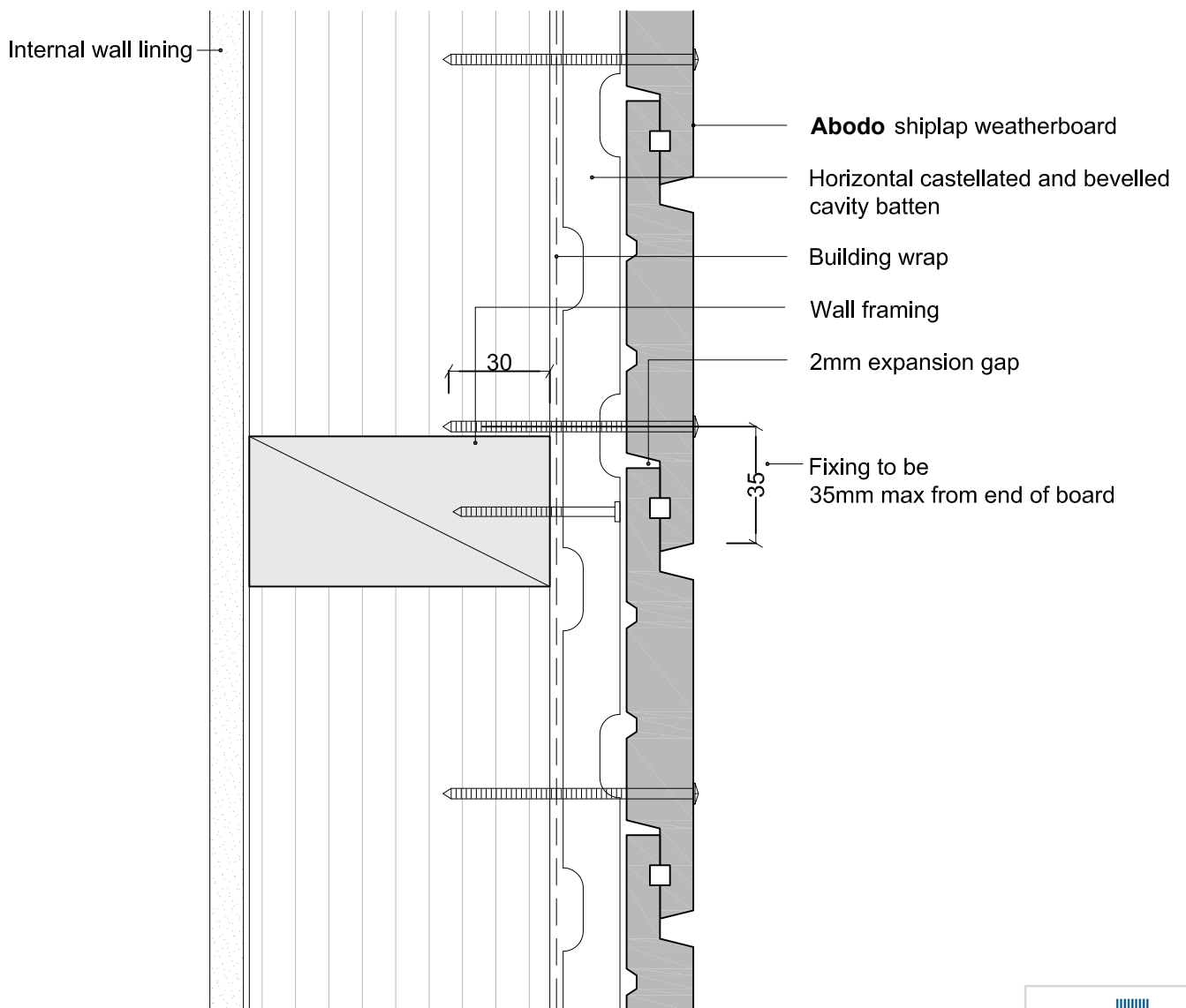


1. Weatherboards must be coated with at least one coat all sides prior to fixing.
2. Fixing points must be pre-drilled minimum 1mm smaller than the fastener.
3. Cut ends and exposed timber must be sealed with an approved coating or end seal.



Vertical Shiplap Weatherboard

Weatherboard Join - Birdseye

Scale

1:2

Date

16/11/14



© 2013 Abodo Wood Ltd, PO Box 8961, Symonds St, Auckland 1052

Ph 64 9) 302 9555 Fx 64 9) 302 9550

www.abodo.co.nz

Drawing No.

V.C.F.55