

Bevel Back Weatherboard

Sheet Index

Sheet No: Revision: Sheet Name:

B.C.1	01	Vertical Cavity Batten Fix
B.C.2	01	Base of wall - concrete floor
B.C.3	01	Base of wall - Timber floor
B.C.4	01	Inter-Storey Cavity Junction
B.C.5	01	Packer Cavity Batten - Painted
B.C.6	01	Packer Cavity Batten Stained
B.C.7	01	Structural Cavity Batten - Painted
B.C.8	01	Structural Cavity Batten - Stained
B.C.9	01	External 90° Corner - Boxed
B.C.10	01	External 90° Corner - Soaker
B.C.11	01	External 135° Corner - Soaker
B.C.12	01	External 90° corner- Scribed & Notched
B.C.13	01	Internal 90° Corner - With Moulding
B.C.14	01	Internal 135° Corner - Scribed & Notched
B.C.15	01	Enclosed Deck - Concrete Substrate
B.C.16	01	Enclosed Deck - Timber Substrate
B.C.17	01	Parapet Balustrade Cap Flashing
B.C.18	01	Parapet Balustrade Intersection With Wall - Butted
B.C.19	01	Meter Box Head
B.C.20	01	Meter Box Jamb
B.C.21	01	Meter Box Sill
B.C.22	01	Pipe Penetration
B.C.23	01	Weatherboard Fix - Birdseye
B.C.24	01	Apron Flahing
B.C.25	01	Roof Kick-out Flashing Cavity
B.C.26	01	Top Of Wall - Flat Soffit
B.C.27	01	Top Of Wall - No Soffit
B.C.28	01	Top Of Wall - Slopping Soffit
B.C.29	01	Top Of Wall - Raking Soffit
B.C.30	01	Window Head
B.C.31	01	Window Jamb
B.C.32	01	Window Sill



© Abodo Wood Ltd. 2020
info@abodo.co.nz
T +64 (9) 249 0100

SHEET TITLE

COVER SHEET

PROFILE

Bevel Back Weatherboard

SCALE:

- @ A4

PRINT
DATE:

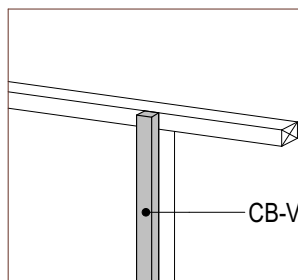
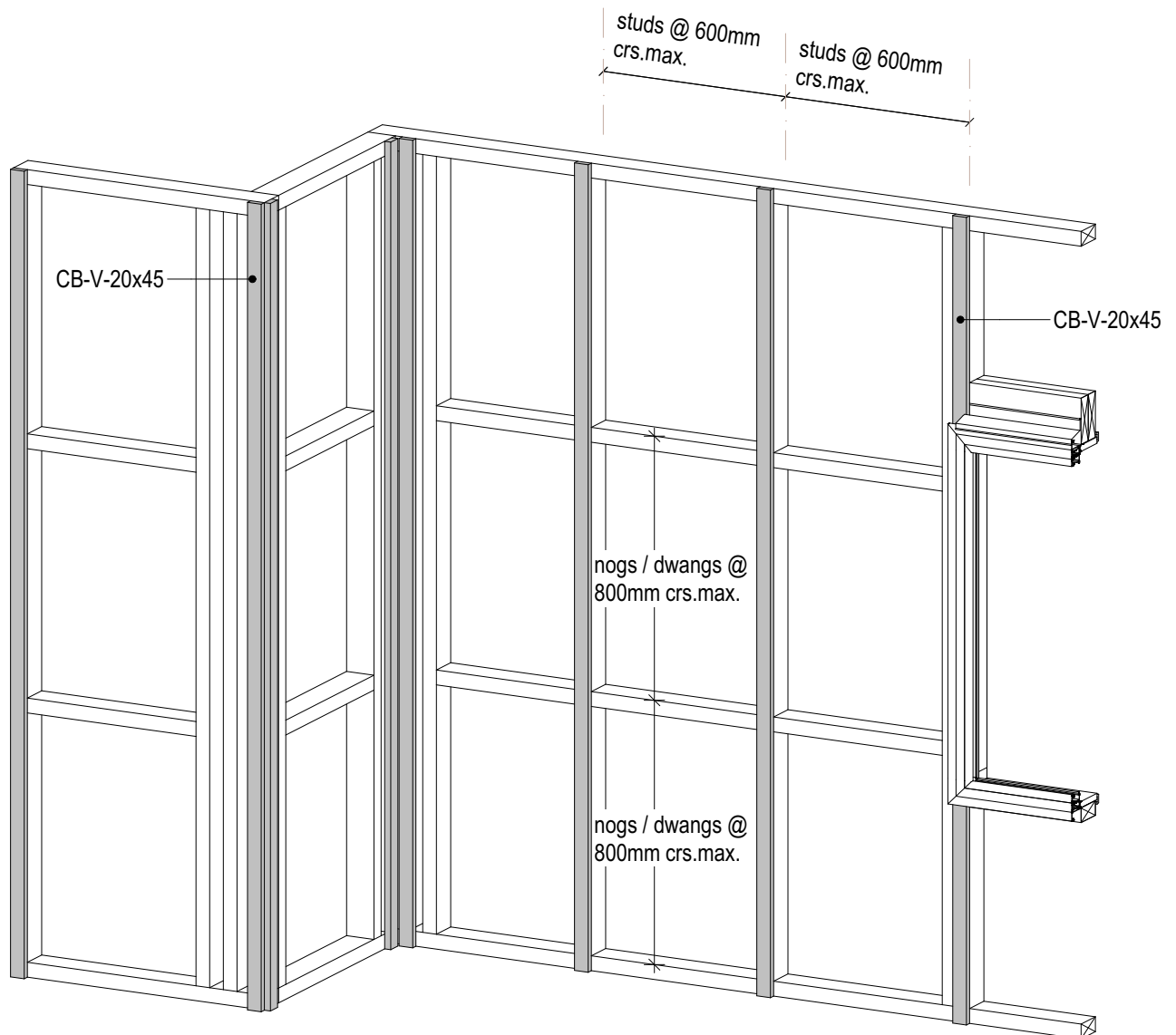
01/04/2020

SHEET NUMBER

1

REVISION

01



CB-V-45x45

Structural Batten Fix

Use CB-V-45x45
Fixed at max. 600mm centres with
4.0x90mm S.S. flat head nails or
8g x 75mm S.S. screws staggered
12mm of the centre line.



© Abodo Wood Ltd. 2020
info@abodo.co.nz
T +64 (9) 249 0100

SHEET TITLE

Vertical Cavity Batten Fix

PROFILE

Bevel Back Weatherboard

SCALE: NTS @ A4
PRINT DATE: 01/04/2020

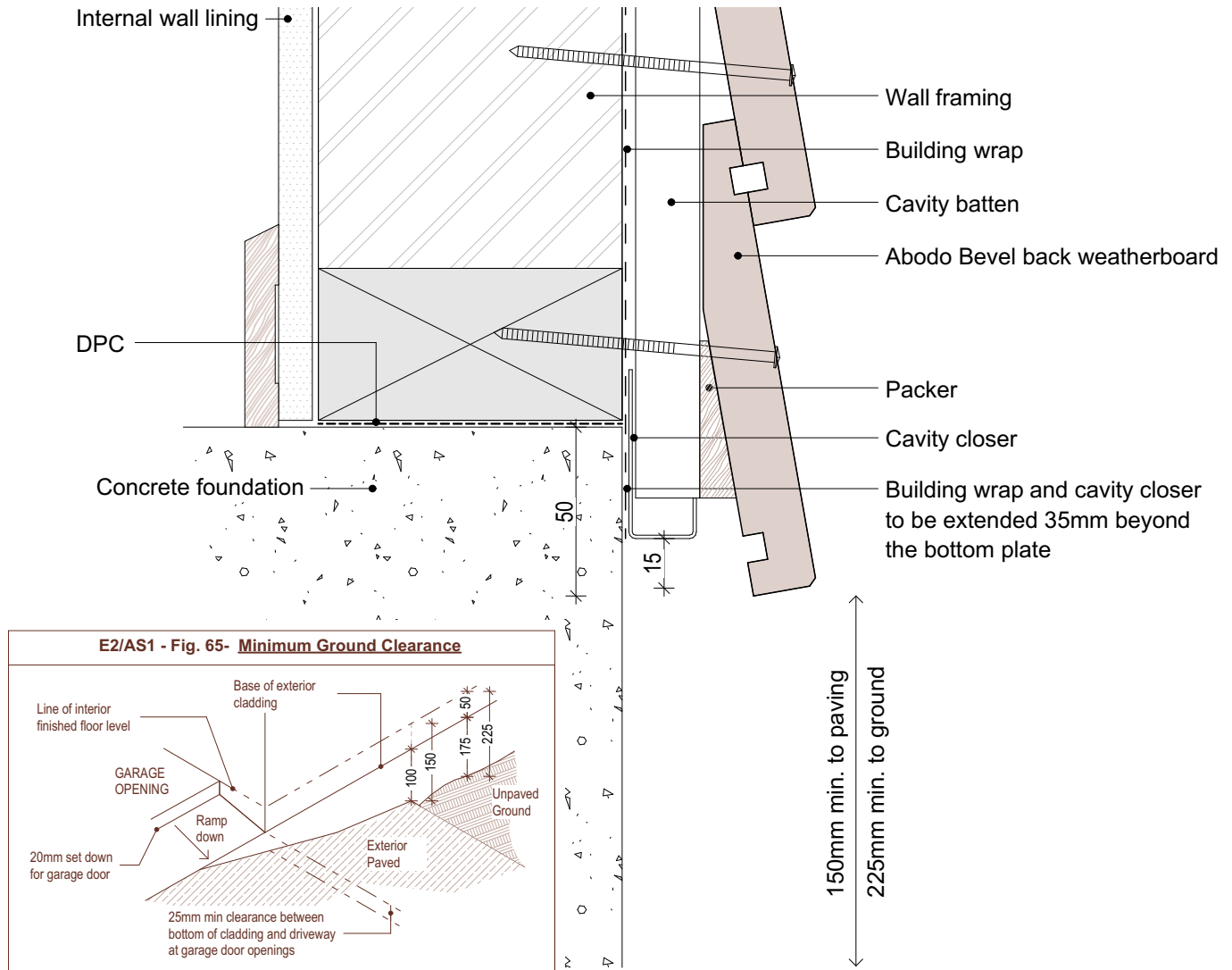
SHEET NUMBER

B.C.1

REVISION

01

1. Weatherboards must be coated with at least one coat all sides prior to fixing.
2. Fixing points must be pre-drilled minimum 1mm smaller than the fastener.
3. Cut ends and exposed timber must be sealed with an approved coating or end seal.



© Abodo Wood Ltd. 2020
info@abodo.co.nz
T +64 (9) 249 0100

SHEET TITLE

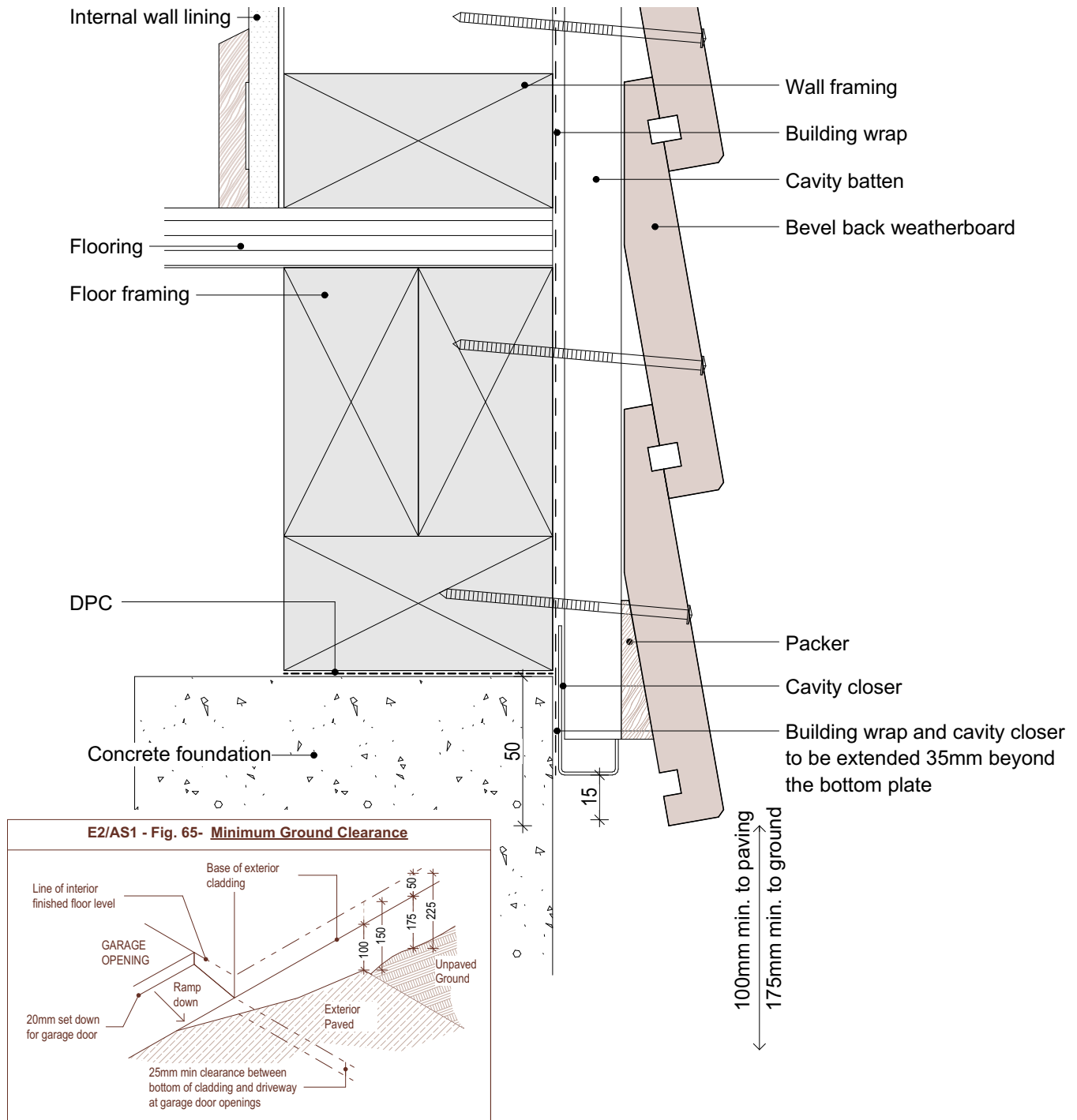
Base of wall - concrete floor

PROFILE
Bevel Back Weatherboard

SCALE:
1:2 @ A4
PRINT DATE: 01/04/2020

SHEET NUMBER
B.C.2
REVISION
01

1. Weatherboards must be coated with at least one coat all sides prior to fixing.
2. Fixing points must be pre-drilled minimum 1mm smaller than the fastener.
3. Cut ends and exposed timber must be sealed with an approved coating or end seal.



© Abodo Wood Ltd. 2020
info@abodo.co.nz
T +64 (9) 249 0100

Abodo Wood Ltd.
62 Ascot Road, Mangere,
Auckland 2022, New Zealand

SHEET TITLE

Base of wall - Timber floor

PROFILE

Bevel Back Weatherboard

SCALE:

1:2 @ A4

PRINT DATE:

01/04/2020

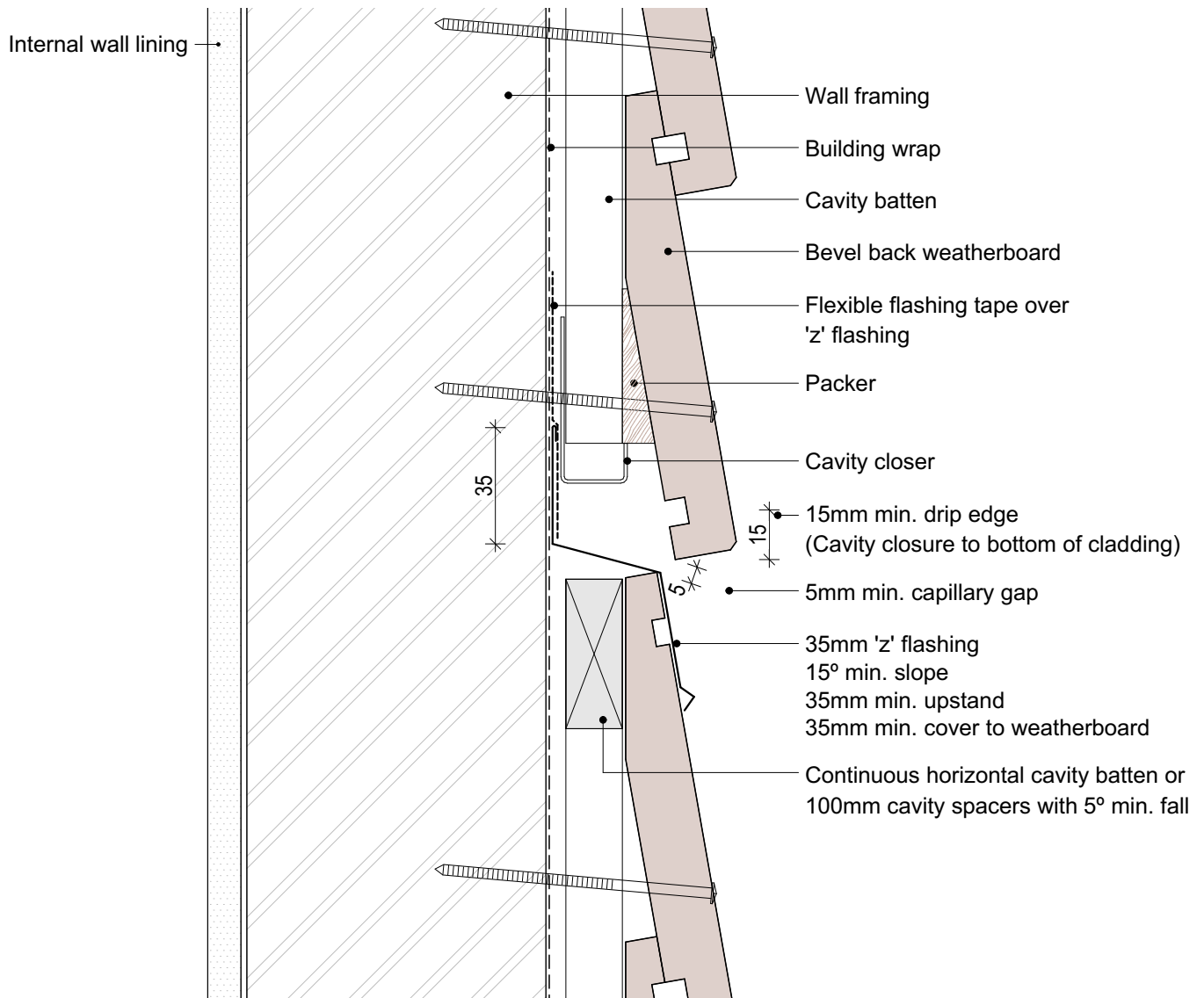
SHEET NUMBER

B.C.3

REVISION

01

1. Weatherboards must be coated with at least one coat all sides prior to fixing.
2. Fixing points must be pre-drilled minimum 1mm smaller than the fastener.
3. Cut ends and exposed timber must be sealed with an approved coating or end seal.



© Abodo Wood Ltd. 2020
info@abodo.co.nz
T +64 (9) 249 0100

SHEET TITLE

Inter-Storey Cavity Junction

PROFILE

Bevel Back Weatherboard

SCALE: 1:2 @ A4

PRINT DATE: 01/04/2020

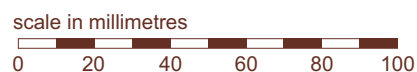
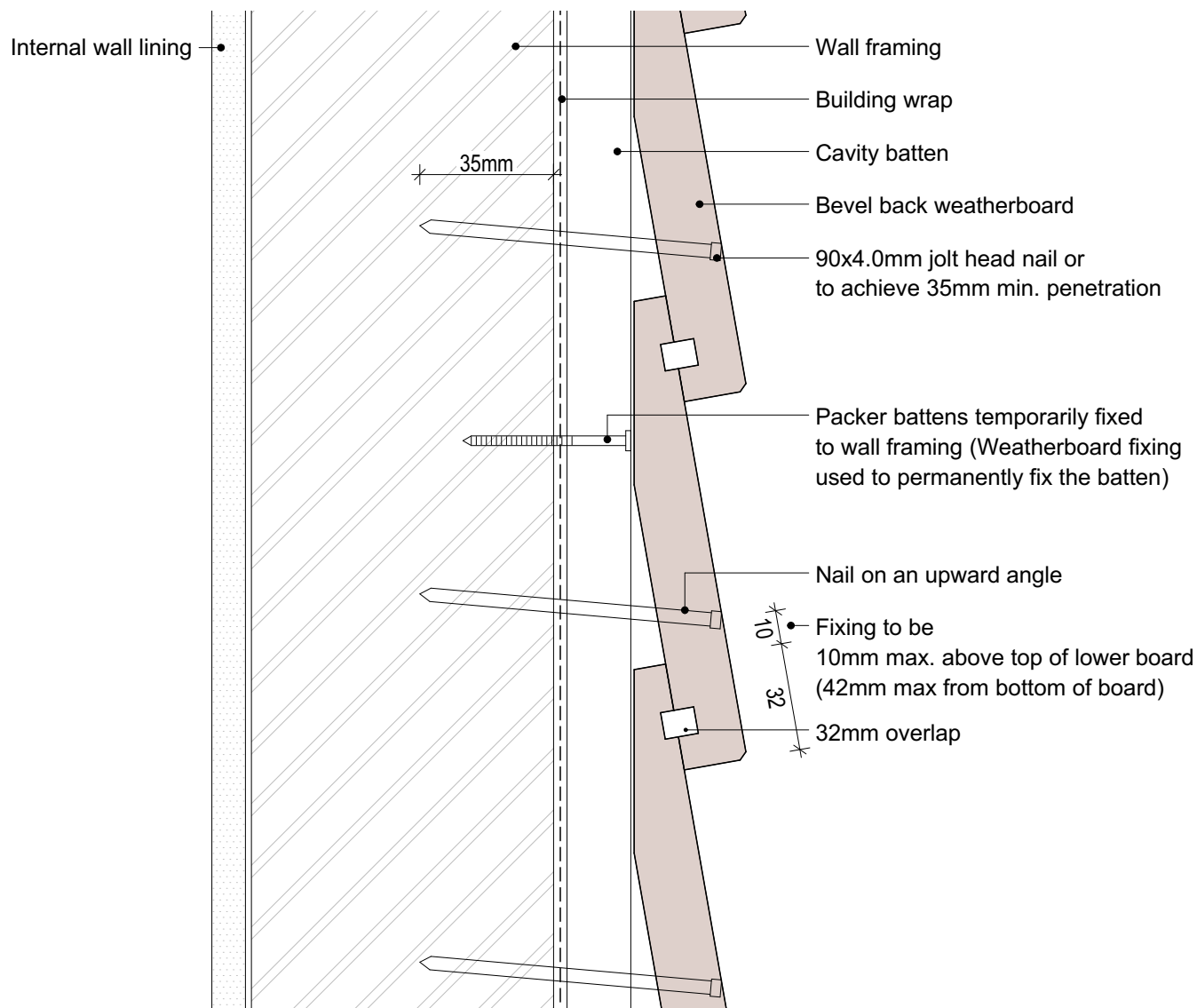
SHEET NUMBER

B.C.4

REVISION

01

1. Weatherboards must be coated with at least one coat all sides prior to fixing.
2. Fixing points must be pre-drilled minimum 1mm smaller than the fastener.
3. Cut ends and exposed timber must be sealed with an approved coating or end seal.



© Abodo Wood Ltd. 2020
info@abodo.co.nz
T +64 (9) 249 0100

SHEET TITLE

Packer Cavity Batten - Painted

PROFILE

Bevel Back Weatherboard

SCALE:

1:2 @ A4

PRINT DATE:

01/04/2020

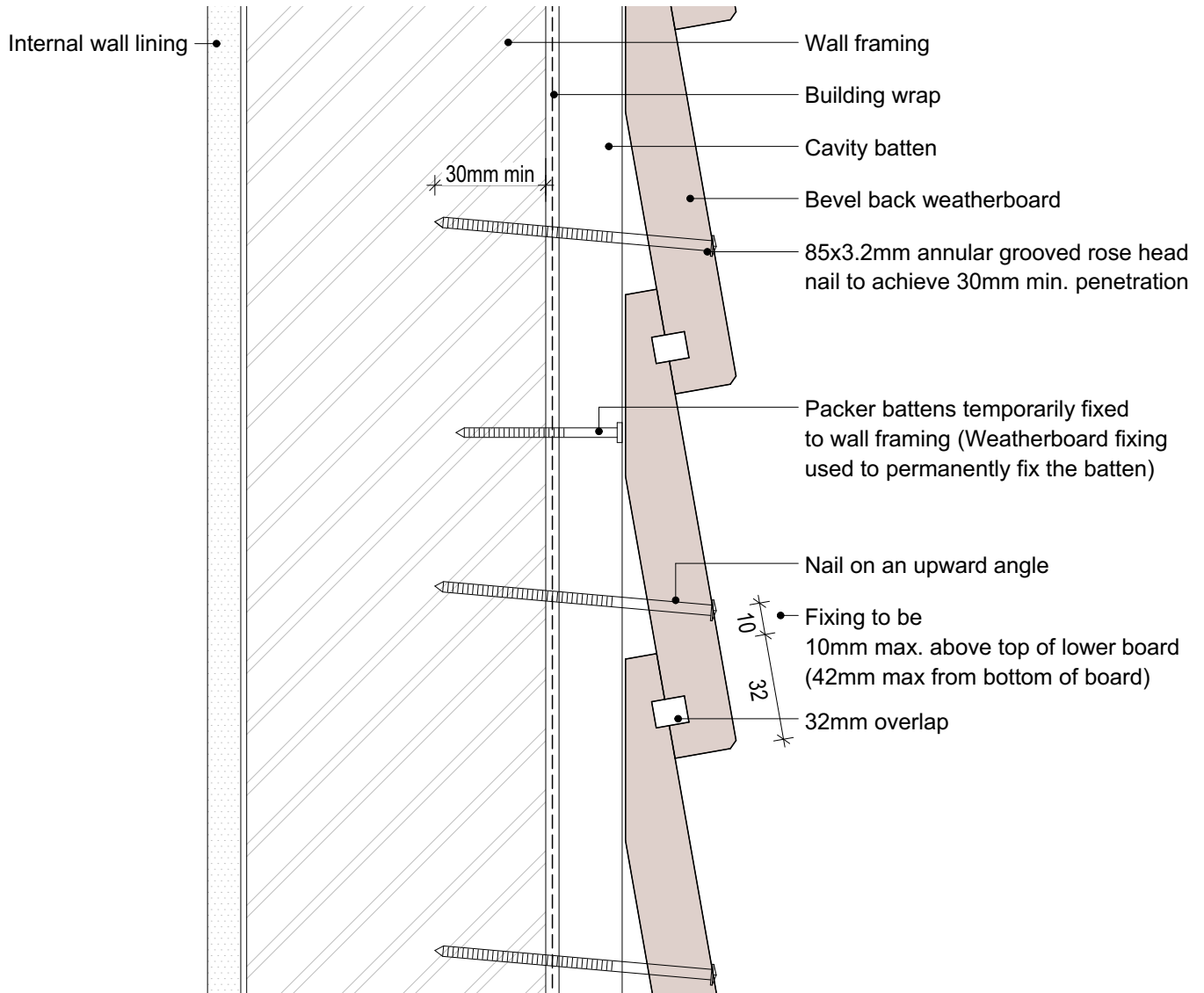
SHEET NUMBER

B.C.5

REVISION

01

1. Weatherboards must be coated with at least one coat all sides prior to fixing.
2. Fixing points must be pre-drilled minimum 1mm smaller than the fastener.
3. Cut ends and exposed timber must be sealed with an approved coating or end seal.



© Abodo Wood Ltd. 2020
info@abodo.co.nz
T +64 (9) 249 0100

SHEET TITLE

Packer Cavity Batten Stained

PROFILE

Bevel Back Weatherboard

SCALE:

1:2 @ A4

PRINT DATE:

01/04/2020

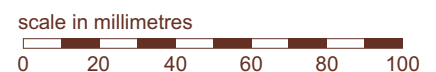
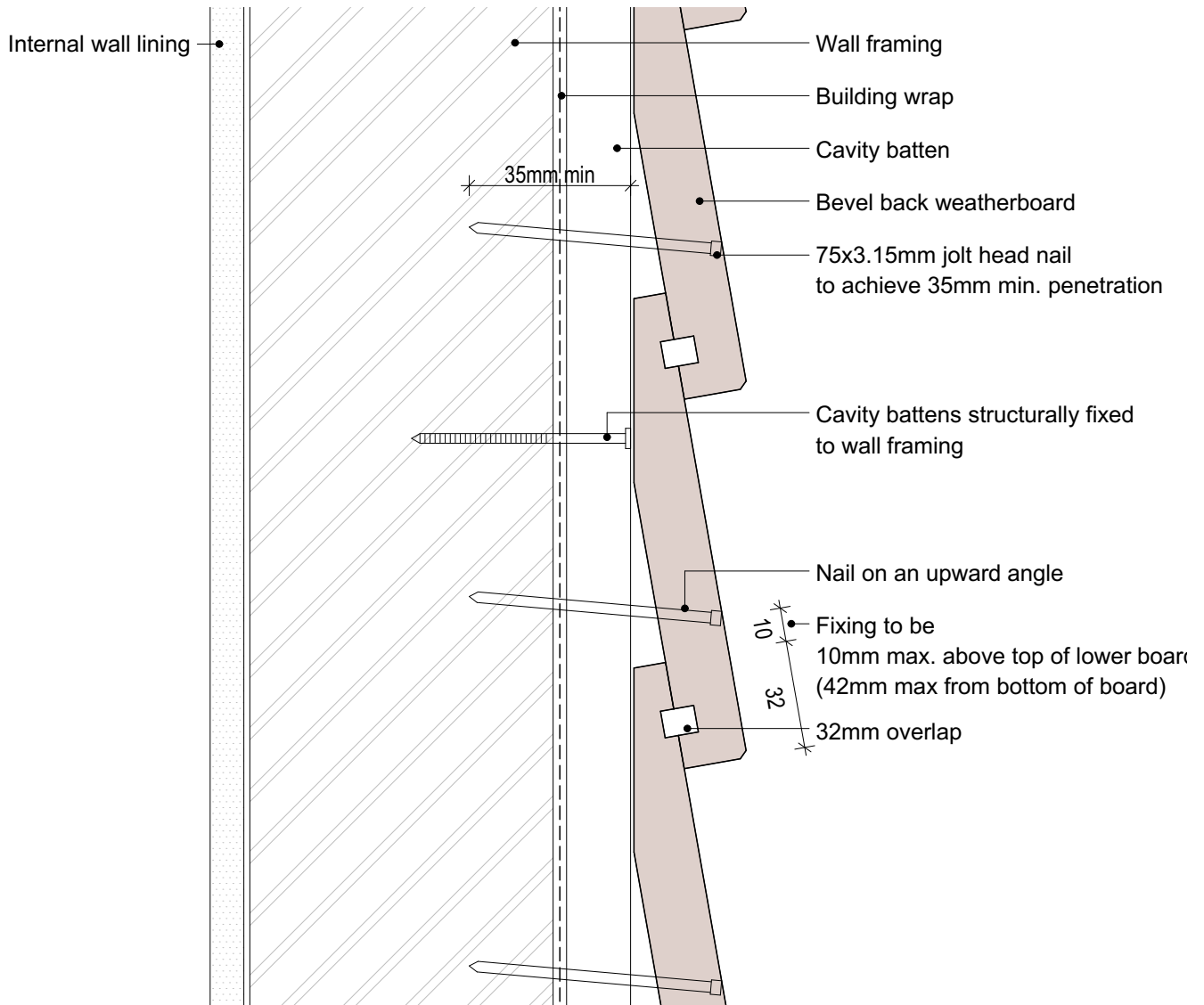
SHEET NUMBER

B.C.6

REVISION

01

1. Weatherboards must be coated with at least one coat all sides prior to fixing.
2. Fixing points must be pre-drilled minimum 1mm smaller than the fastener.
3. Cut ends and exposed timber must be sealed with an approved coating or end seal.



© Abodo Wood Ltd. 2020
info@abodo.co.nz
T +64 (9) 249 0100

SHEET TITLE

Structural Cavity Batten - Painted

PROFILE

Bevel Back Weatherboard

SCALE:

1:2 @ A4

PRINT DATE:

01/04/2020

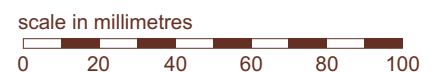
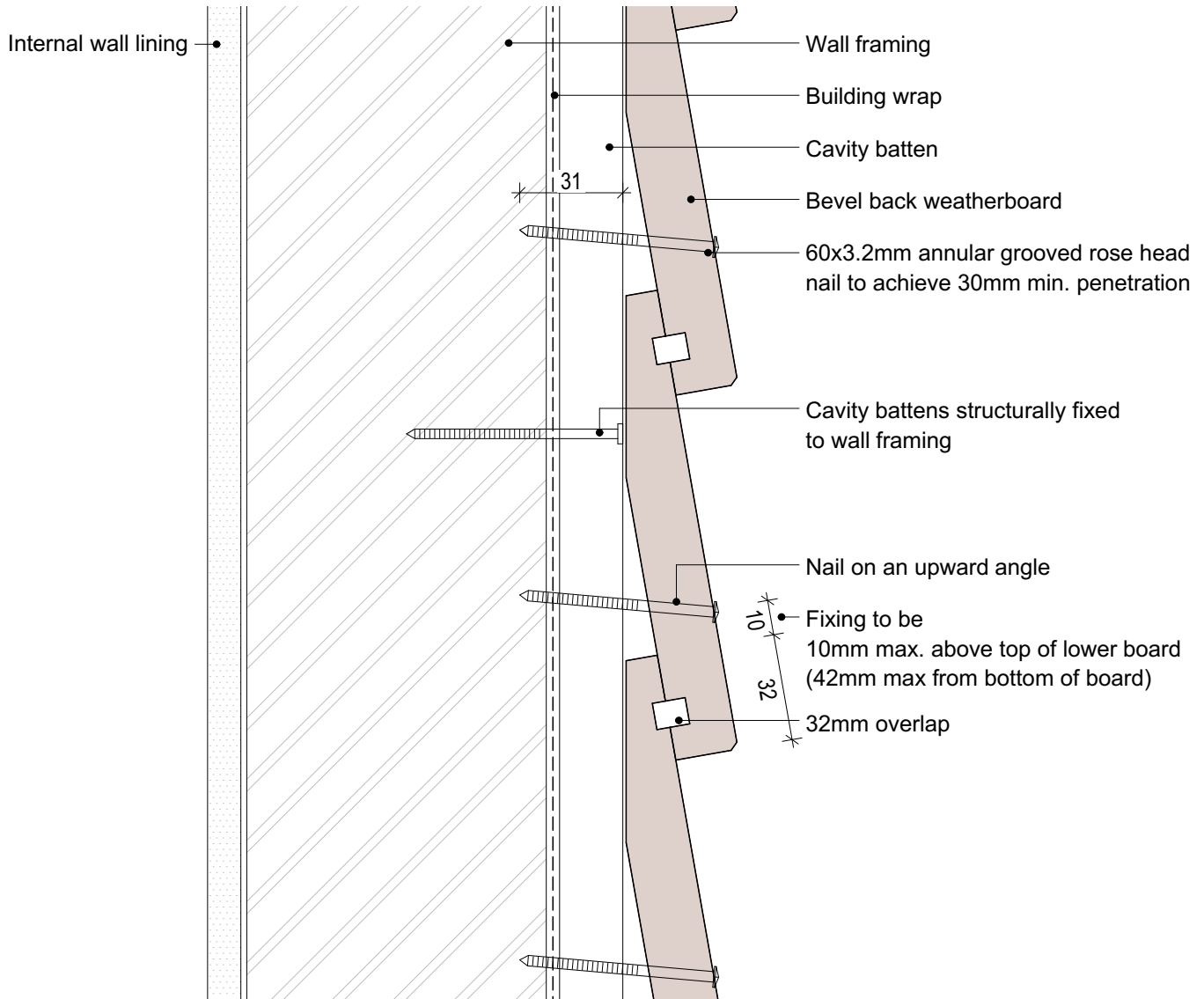
SHEET NUMBER

B.C.7

REVISION

01

1. Weatherboards must be coated with at least one coat all sides prior to fixing.
2. Fixing points must be pre-drilled minimum 1mm smaller than the fastener.
3. Cut ends and exposed timber must be sealed with an approved coating or end seal.



© Abodo Wood Ltd. 2020
info@abodo.co.nz
T +64 (9) 249 0100

SHEET TITLE

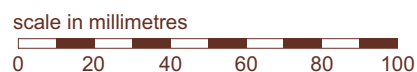
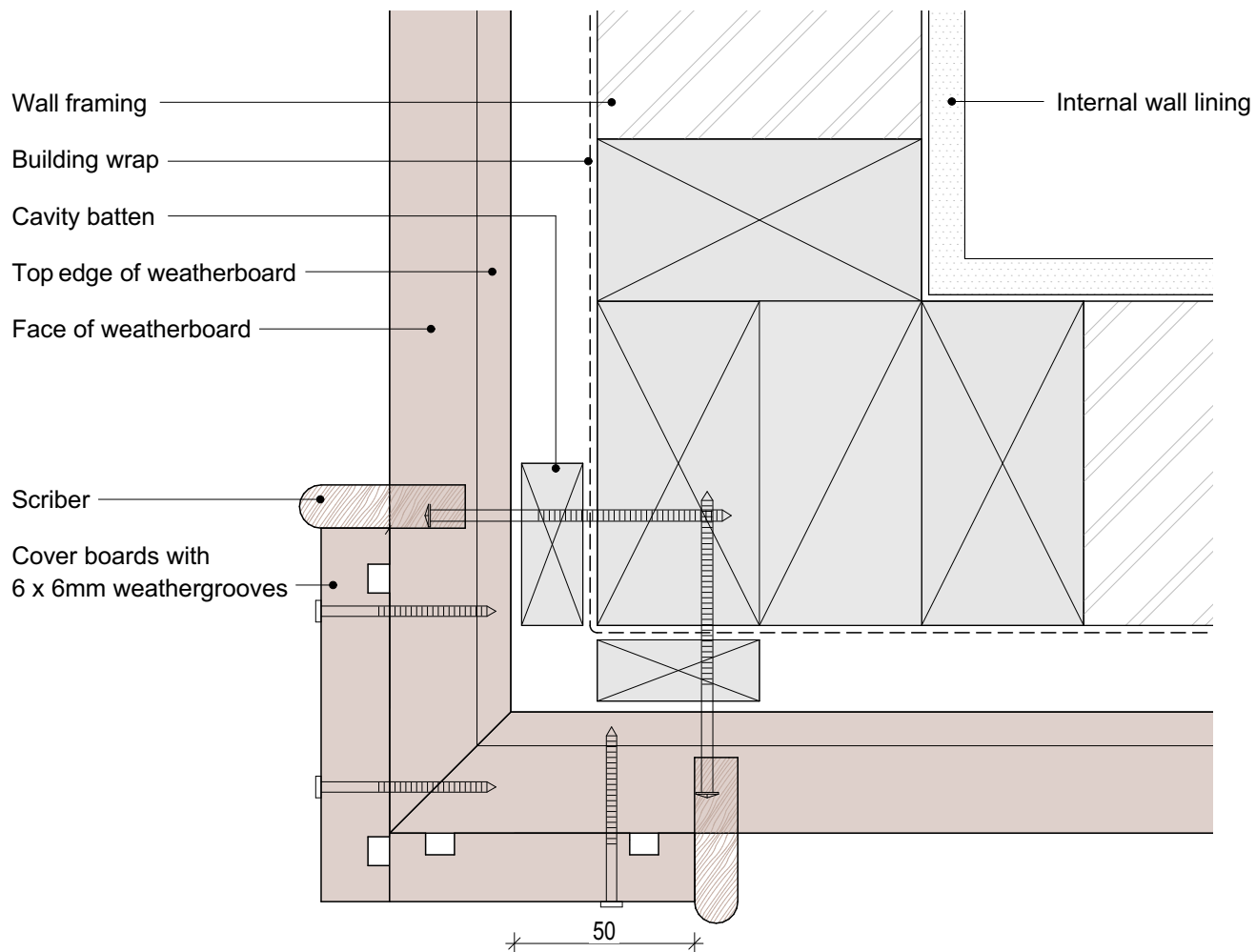
Structural Cavity Batten - Stained

PROFILE
Bevel Back Weatherboard

SCALE:
1:2 @ A4
PRINT DATE: 01/04/2020

SHEET NUMBER
B.C.8
REVISION
01

1. Weatherboards must be coated with at least one coat all sides prior to fixing.
2. Fixing points must be pre-drilled minimum 1mm smaller than the fastener.
3. Cut ends and exposed timber must be sealed with an approved coating or end seal.



© Abodo Wood Ltd. 2020
info@abodo.co.nz
T +64 (9) 249 0100

SHEET TITLE

External 90° Corner - Boxed

PROFILE

Bevel Back Weatherboard

SCALE:

1:2 @ A4

PRINT DATE:

01/04/2020

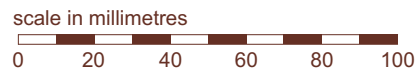
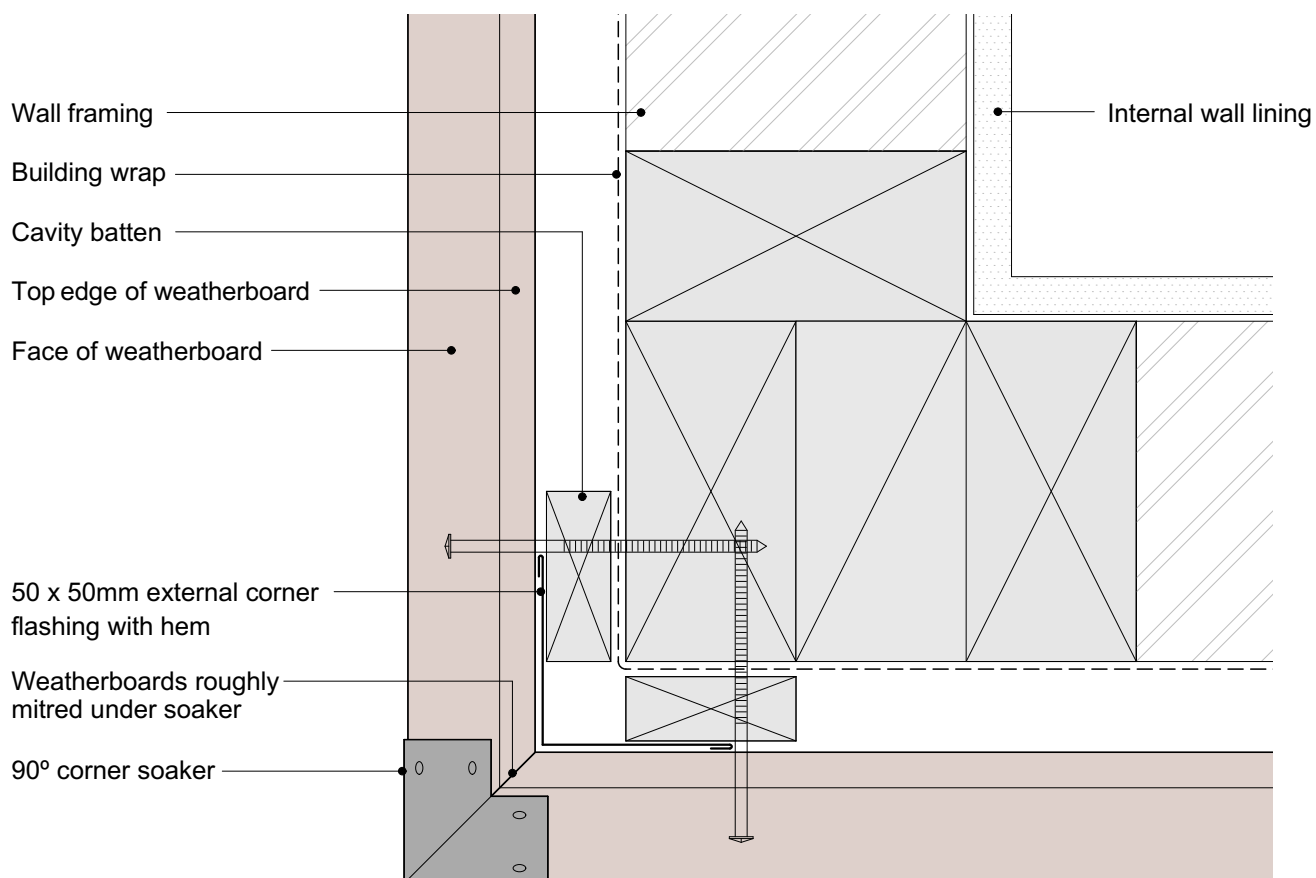
SHEET NUMBER

B.C.9

REVISION

01

1. Weatherboards must be coated with at least one coat all sides prior to fixing.
2. Fixing points must be pre-drilled minimum 1mm smaller than the fastener.
3. Cut ends and exposed timber must be sealed with an approved coating or end seal.



© Abodo Wood Ltd. 2020
info@abodo.co.nz
T +64 (9) 249 0100

SHEET TITLE

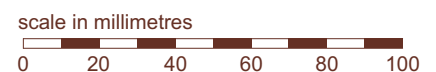
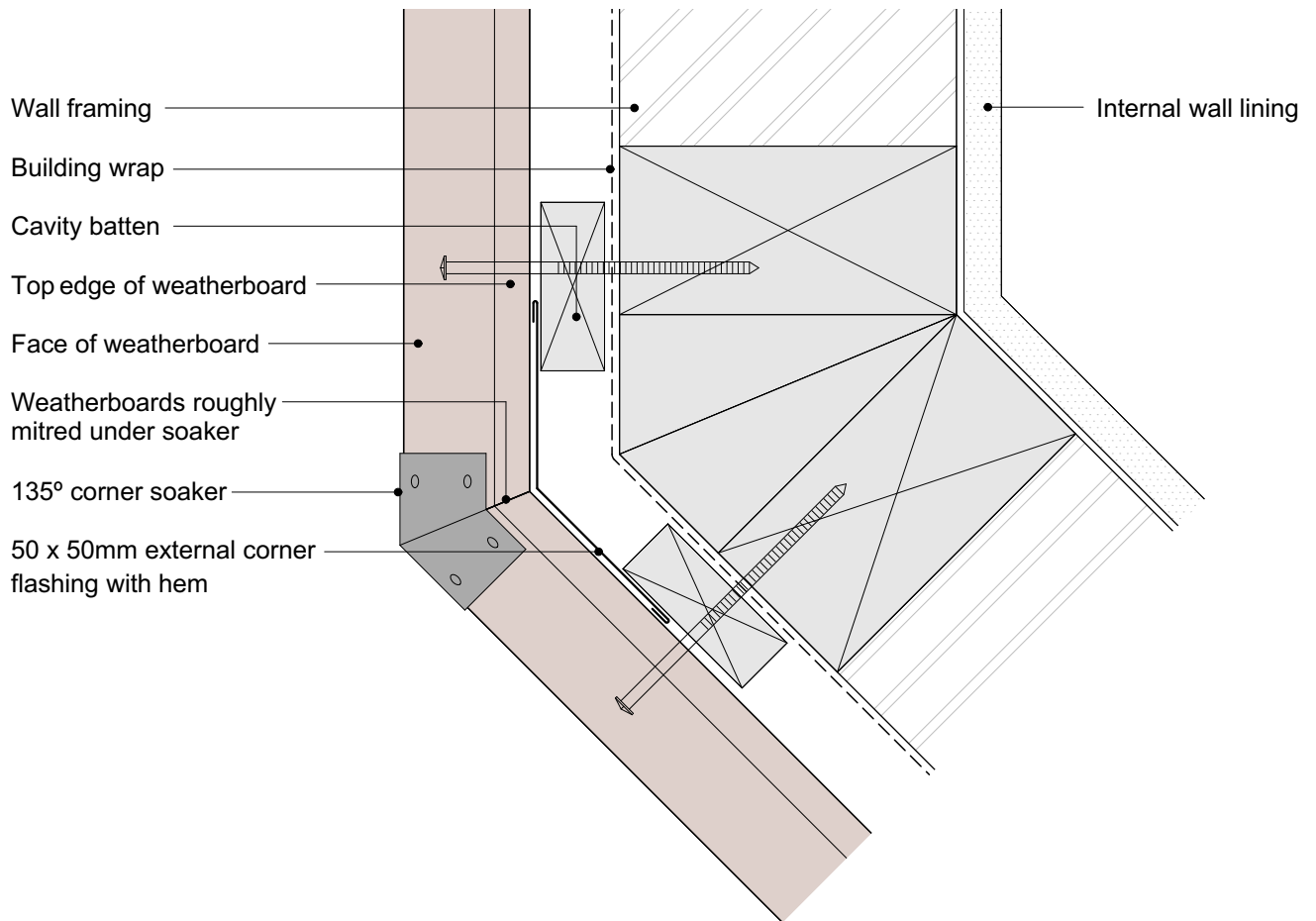
External 90° Corner - Soaker

PROFILE
Bevel Back Weatherboard

SCALE:
1:2 @ A4
PRINT DATE: 01/04/2020

SHEET NUMBER REVISION
B.C.10 01

1. Weatherboards must be coated with at least one coat all sides prior to fixing.
2. Fixing points must be pre-drilled minimum 1mm smaller than the fastener.
3. Cut ends and exposed timber must be sealed with an approved coating or end seal.



© Abodo Wood Ltd. 2020
info@abodo.co.nz
T +64 (9) 249 0100

SHEET TITLE

External 135° Corner - Soaker

PROFILE

Bevel Back Weatherboard

SCALE:

1:2 @ A4

PRINT DATE:

01/04/2020

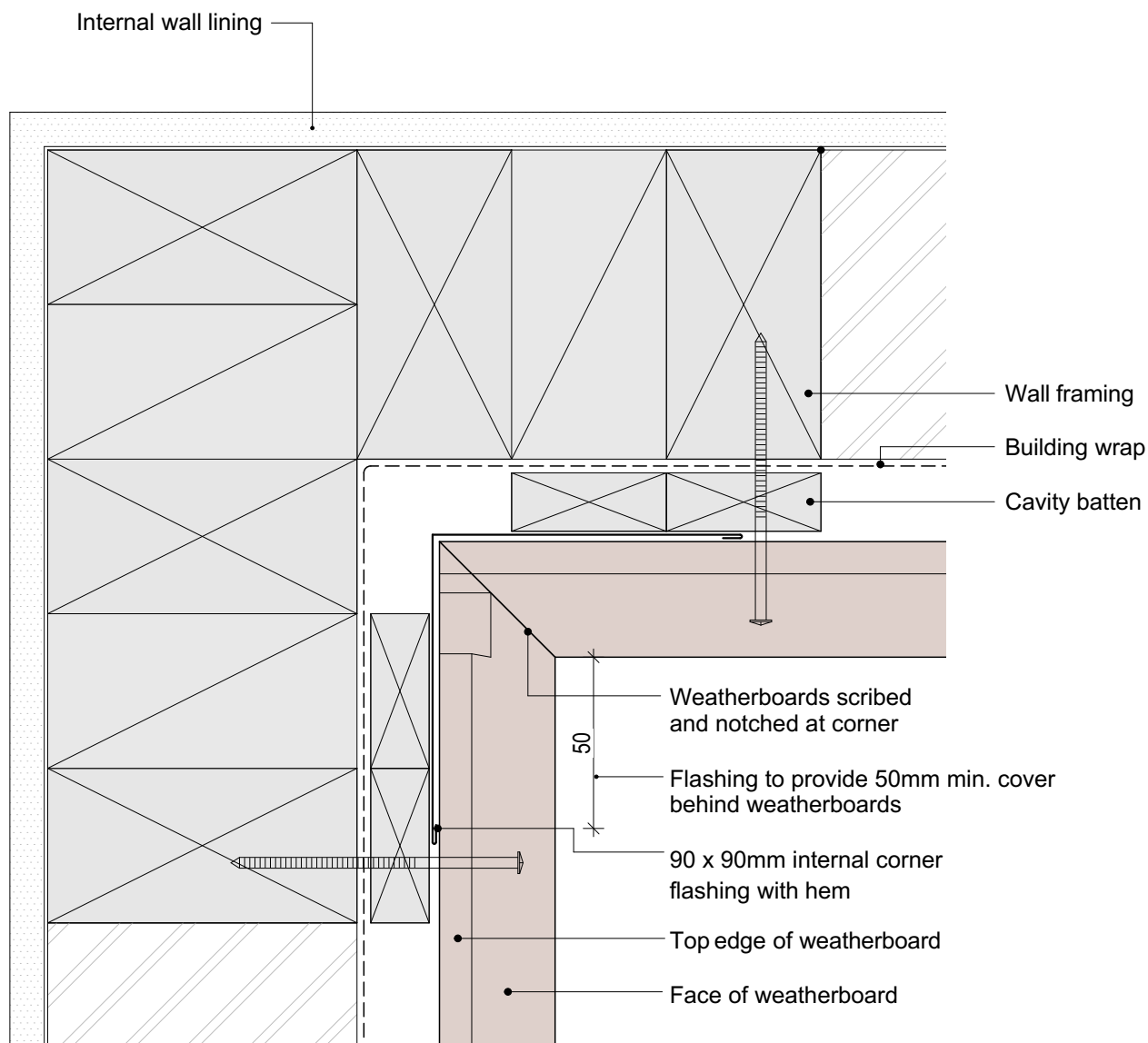
SHEET NUMBER

B.C.11

REVISION

01

1. Weatherboards must be coated with at least one coat all sides prior to fixing.
2. Fixing points must be pre-drilled minimum 1mm smaller than the fastener.
3. Cut ends and exposed timber must be sealed with an approved coating or end seal.



scale in millimetres
0 20 40 60 80 100



© Abodo Wood Ltd. 2020
info@abodo.co.nz
T +64 (9) 249 0100

SHEET TITLE

External 90° corner- Scribed & Notched

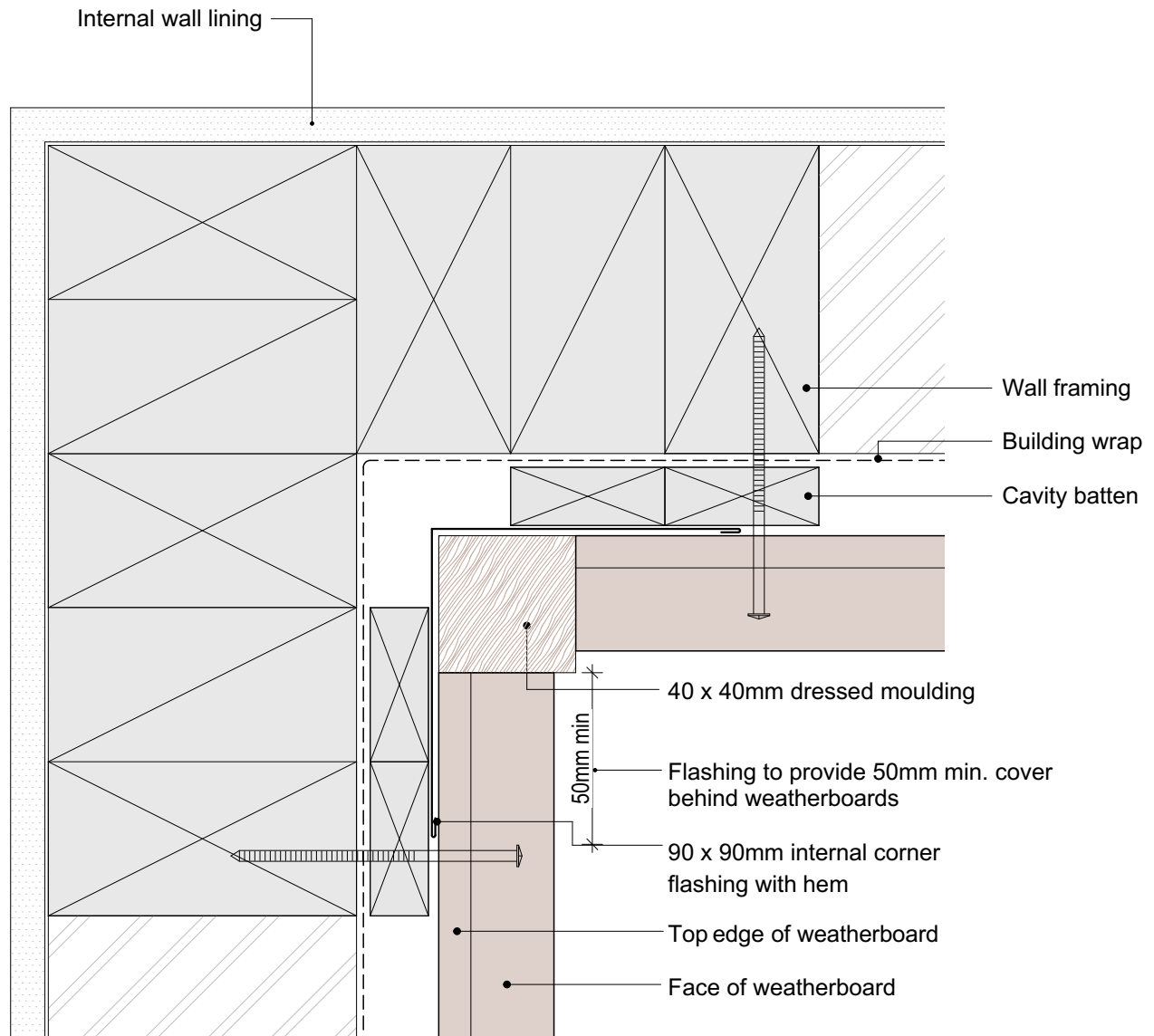
PROFILE

Bevel Back Weatherboard

SCALE: 1:2 @ A4
PRINT DATE: 01/04/2020

SHEET NUMBER REVISION
B.C.12 01

1. Weatherboards must be coated with at least one coat all sides prior to fixing.
2. Fixing points must be pre-drilled minimum 1mm smaller than the fastener.
3. Cut ends and exposed timber must be sealed with an approved coating or end seal.



scale in millimetres
0 20 40 60 80 100



© Abodo Wood Ltd. 2020
info@abodo.co.nz
T +64 (9) 249 0100

SHEET TITLE

Internal 90° Corner - With Moulding

PROFILE

Bevel Back Weatherboard

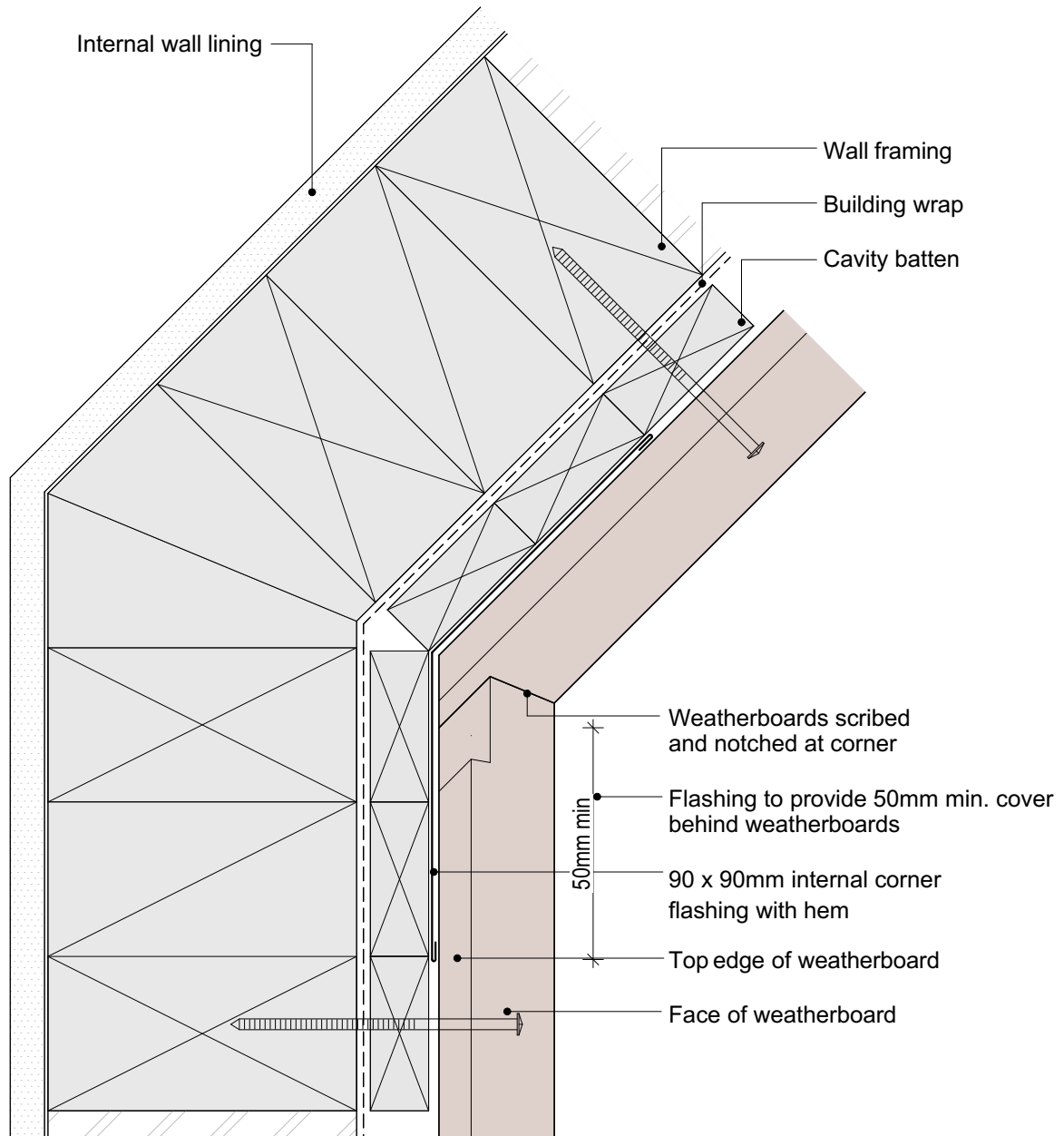
SCALE: 1:2 @ A4

PRINT DATE: 01/04/2020

SHEET NUMBER REVISION

B.C.13 **01**

1. Weatherboards must be coated with at least one coat all sides prior to fixing.
2. Fixing points must be pre-drilled minimum 1mm smaller than the fastener.
3. Cut ends and exposed timber must be sealed with an approved coating or end seal.



scale in millimetres
0 20 40 60 80 100



© Abodo Wood Ltd. 2020
info@abodo.co.nz
T +64 (9) 249 0100

SHEET TITLE

Internal 135° Corner - Scribed & Notched

PROFILE

Bevel Back Weatherboard

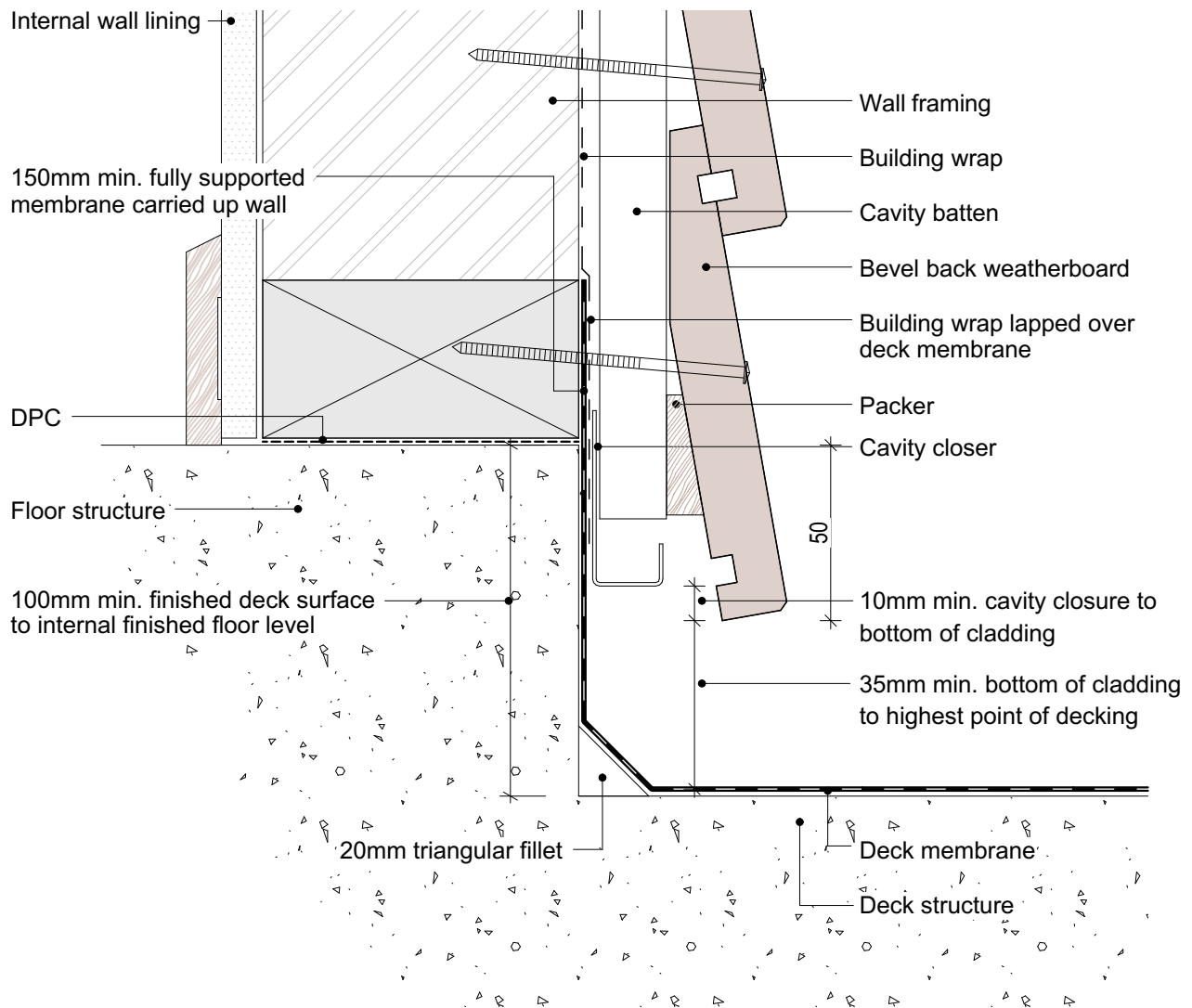
SCALE: 1:2 @ A4

PRINT DATE: 01/04/2020

SHEET NUMBER REVISION

B.C.14 **01**

1. Weatherboards must be coated with at least one coat all sides prior to fixing.
2. Fixing points must be pre-drilled minimum 1mm smaller than the fastener.
3. Cut ends and exposed timber must be sealed with an approved coating or end seal.



scale in millimetres

0 20 40 60 80 100



© Abodo Wood Ltd. 2020
info@abodo.co.nz
T +64 (9) 249 0100

SHEET TITLE

Enclosed Deck - Concrete Substrate

PROFILE

Bevel Back Weatherboard

SCALE:

1:2 @ A4

PRINT DATE:

01/04/2020

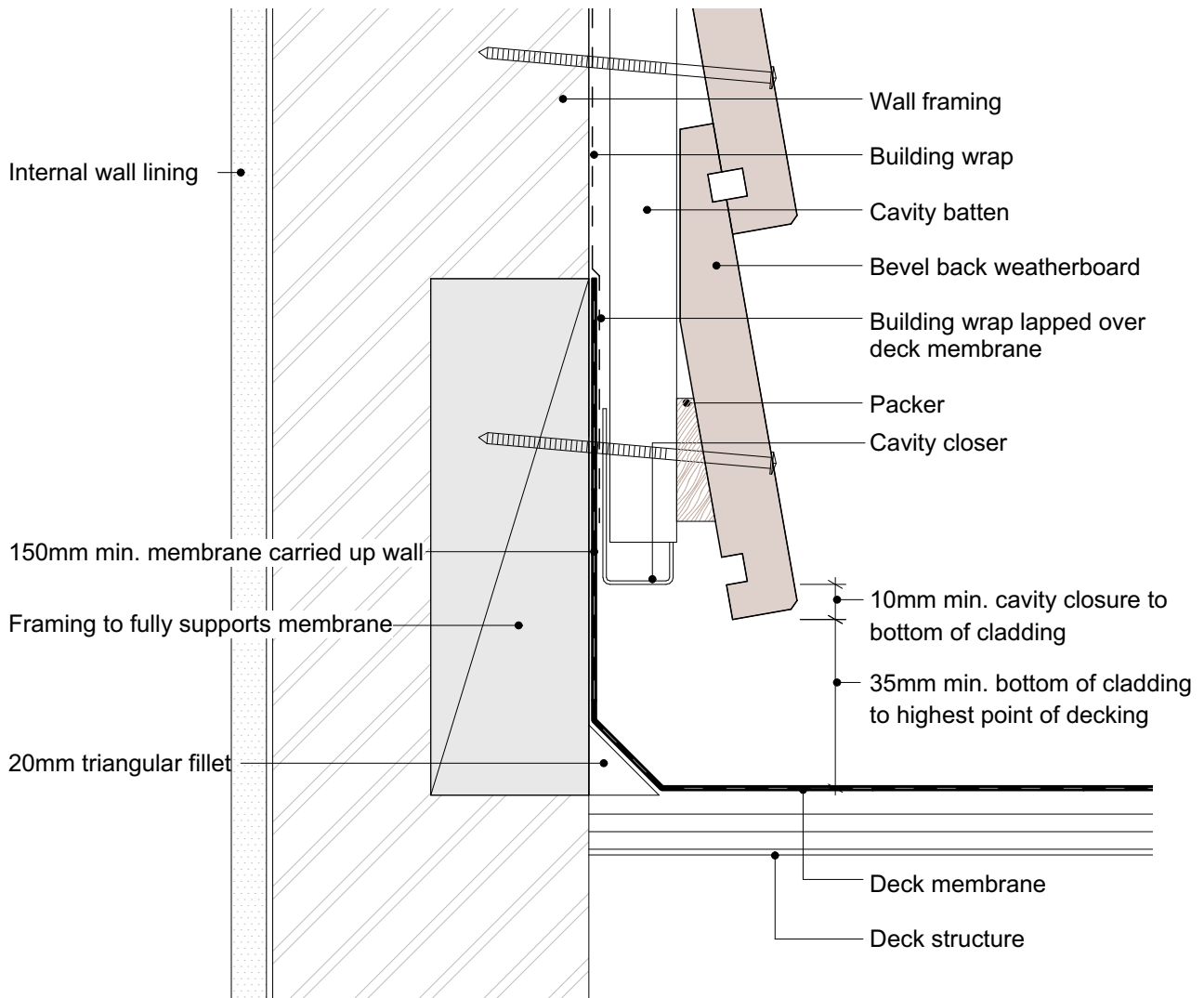
SHEET NUMBER

B.C.15

REVISION

01

1. Weatherboards must be coated with at least one coat all sides prior to fixing.
2. Fixing points must be pre-drilled minimum 1mm smaller than the fastener.
3. Cut ends and exposed timber must be sealed with an approved coating or end seal.



scale in millimetres

0 20 40 60 80 100



© Abodo Wood Ltd. 2020
info@abodo.co.nz
T +64 (9) 249 0100

SHEET TITLE

Enclosed Deck - Timber Substrate

PROFILE

Bevel Back Weatherboard

SCALE:

1:2 @ A4

PRINT DATE:

01/04/2020

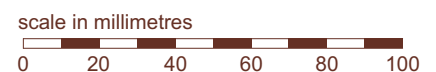
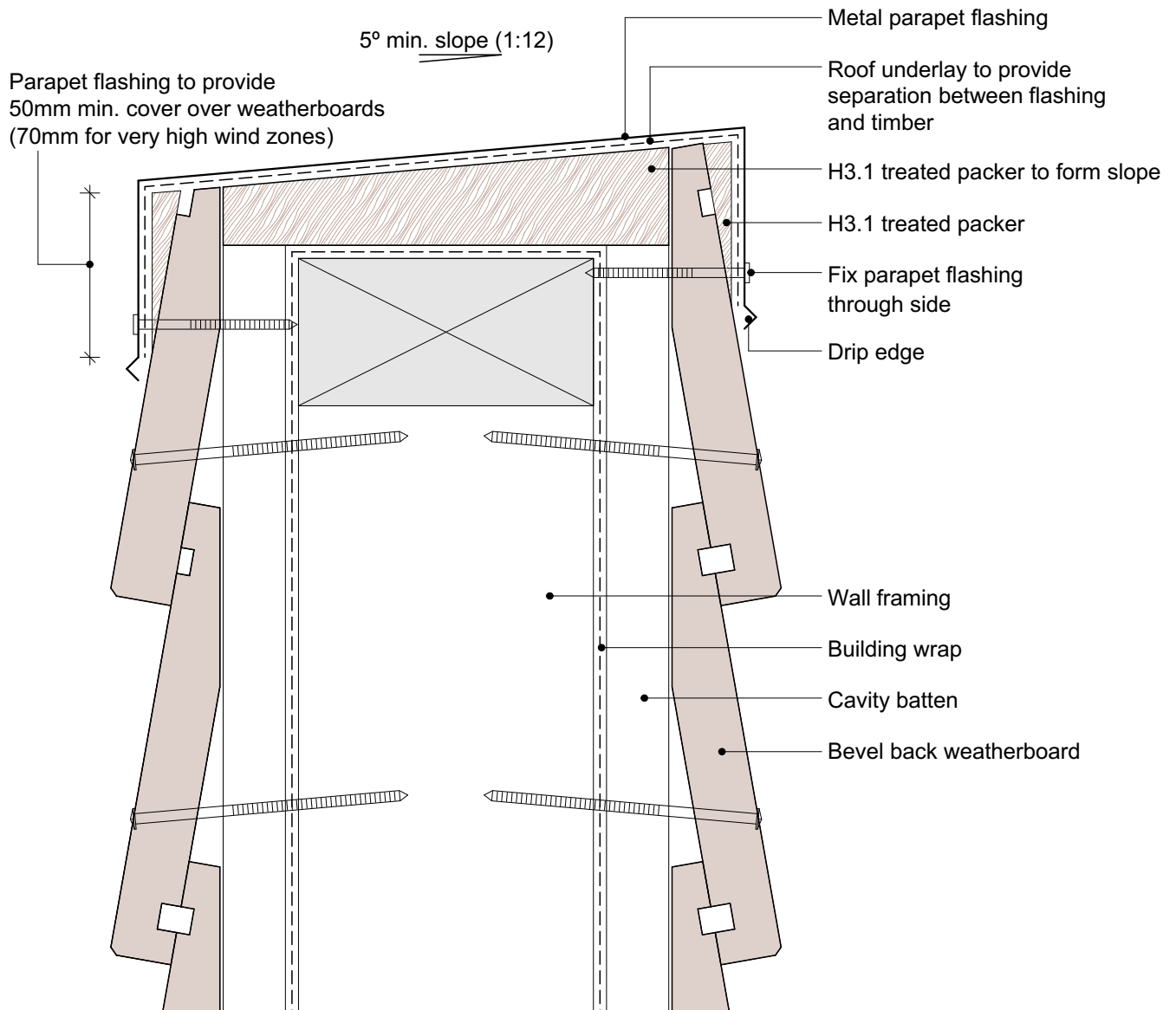
SHEET NUMBER

B.C.16

REVISION

01

1. Weatherboards must be coated with at least one coat all sides prior to fixing.
2. Fixing points must be pre-drilled minimum 1mm smaller than the fastener.
3. Cut ends and exposed timber must be sealed with an approved coating or end seal.



© Abodo Wood Ltd. 2020
info@abodo.co.nz
T +64 (9) 249 0100

SHEET TITLE

Parapet Balustrade Cap Flashing

PROFILE

Bevel Back Weatherboard

SCALE:

1:2 @ A4

PRINT DATE:

01/04/2020

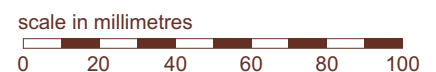
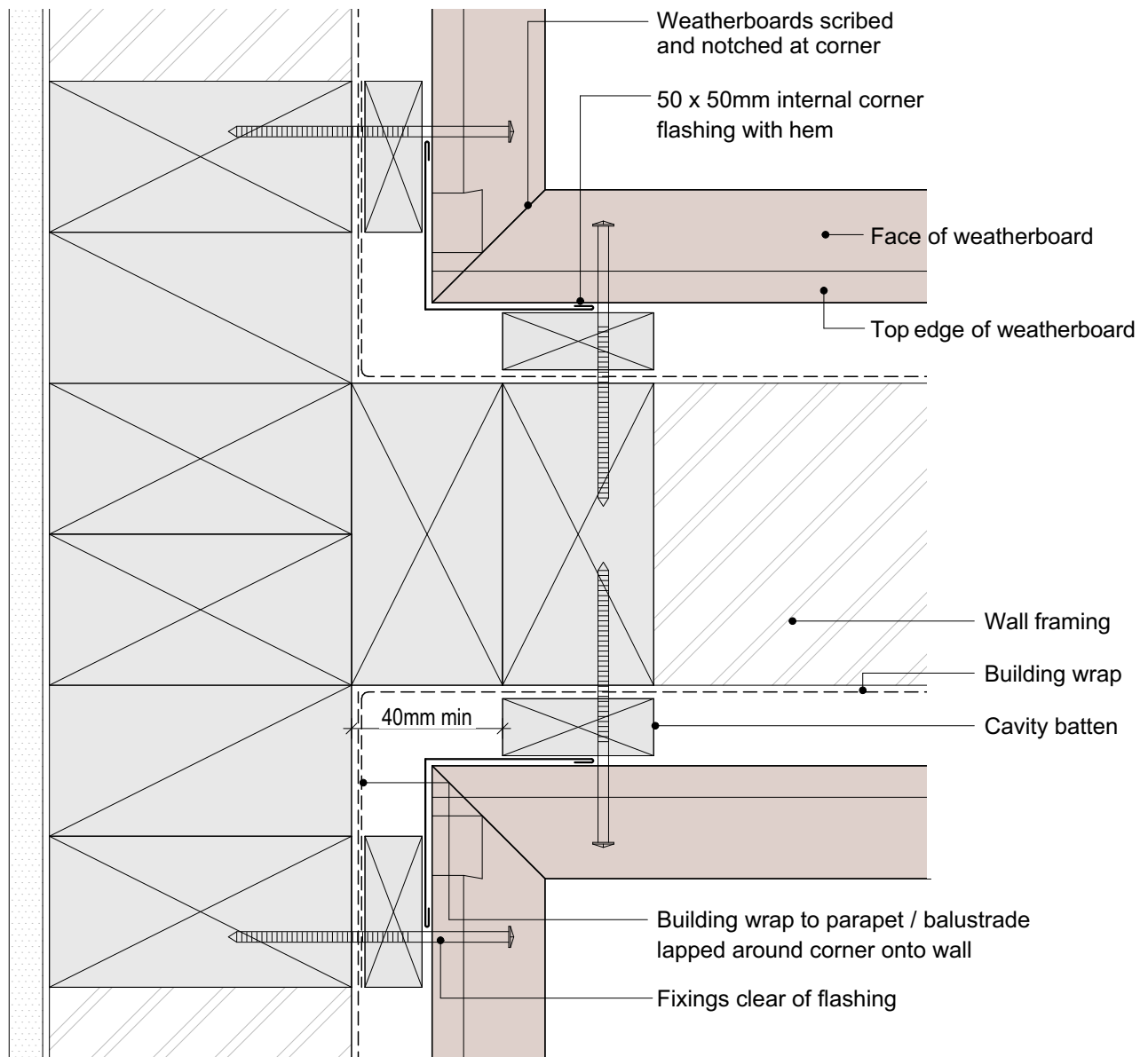
SHEET NUMBER

B.C.17

REVISION

01

1. Weatherboards must be coated with at least one coat all sides prior to fixing.
2. Fixing points must be pre-drilled minimum 1mm smaller than the fastener.
3. Cut ends and exposed timber must be sealed with an approved coating or end seal.



© Abodo Wood Ltd. 2020
info@abodo.co.nz
T +64 (9) 249 0100

SHEET TITLE

Parapet Balustrade Intersection With Wall - Butted

PROFILE

Bevel Back Weatherboard

SCALE:

1:2 @ A4

PRINT DATE:

01/04/2020

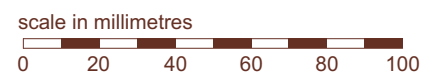
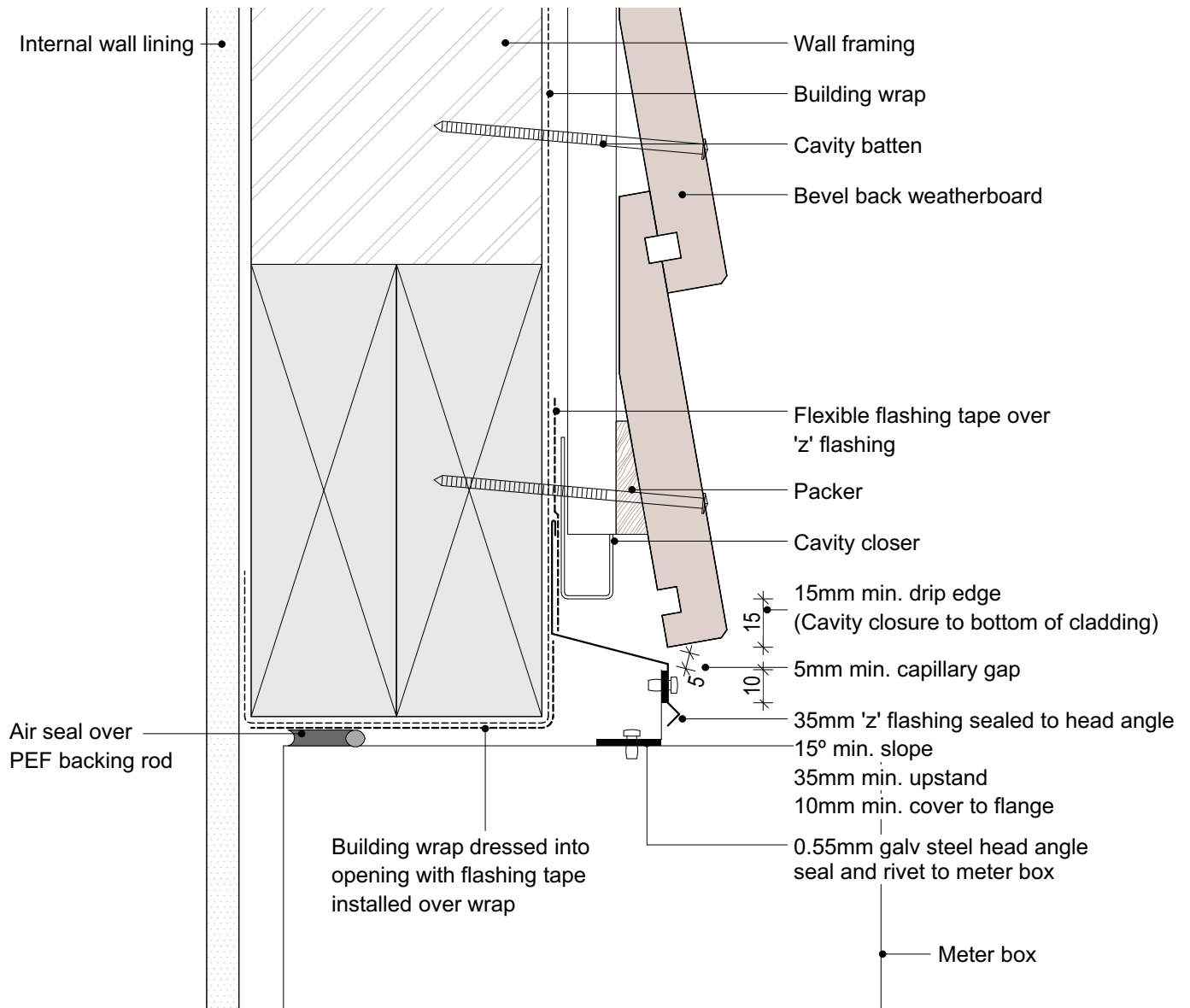
SHEET NUMBER

B.C.18

REVISION

01

1. Weatherboards must be coated with at least one coat all sides prior to fixing.
2. Fixing points must be pre-drilled minimum 1mm smaller than the fastener.
3. Cut ends and exposed timber must be sealed with an approved coating or end seal.



© Abodo Wood Ltd. 2020
info@abodo.co.nz
T +64 (9) 249 0100

SHEET TITLE

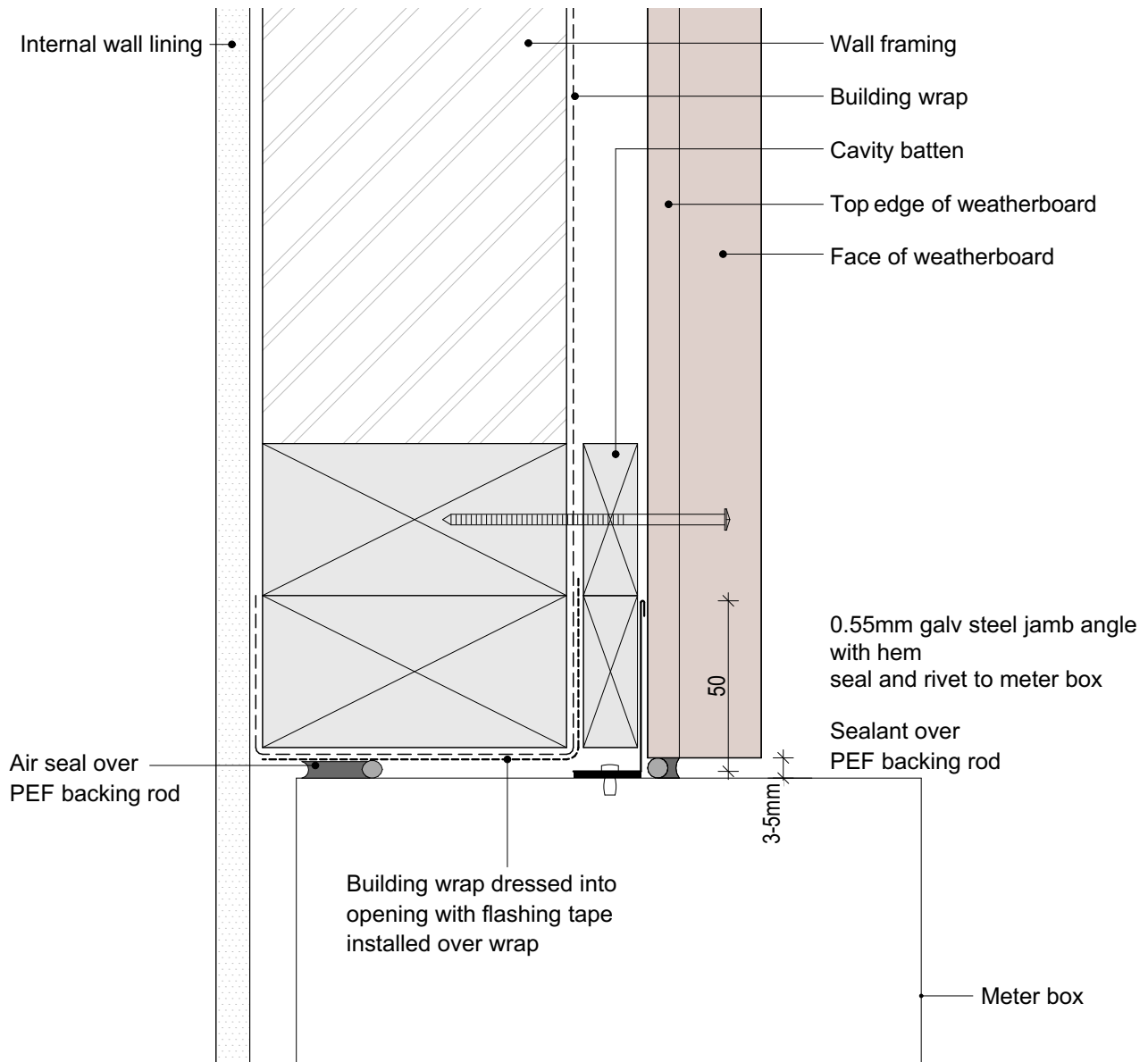
Meter Box Head

PROFILE
Bevel Back Weatherboard

SCALE:
1:2 @ A4
PRINT
DATE: 01/04/2020

SHEET NUMBER
B.C.19
REVISION
01

1. Weatherboards must be coated with at least one coat all sides prior to fixing.
2. Fixing points must be pre-drilled minimum 1mm smaller than the fastener.
3. Cut ends and exposed timber must be sealed with an approved coating or end seal.



© Abodo Wood Ltd. 2020
info@abodo.co.nz
T +64 (9) 249 0100

SHEET TITLE

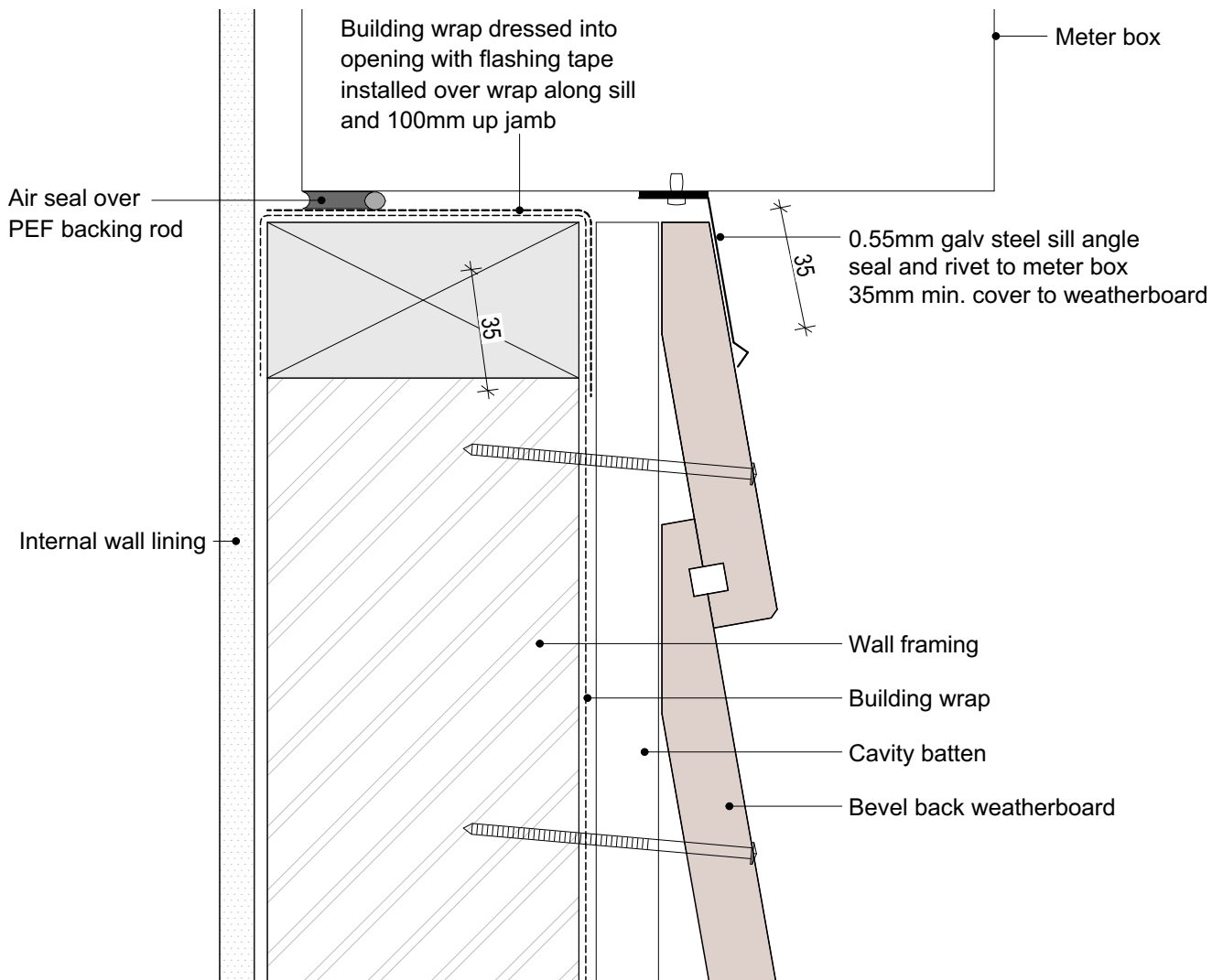
Meter Box Jamb

PROFILE
Bevel Back Weatherboard

SCALE:
1:2 @ A4
PRINT DATE: 01/04/2020

SHEET NUMBER
B.C.20
REVISION
01

1. Weatherboards must be coated with at least one coat all sides prior to fixing.
2. Fixing points must be pre-drilled minimum 1mm smaller than the fastener.
3. Cut ends and exposed timber must be sealed with an approved coating or end seal.



© Abodo Wood Ltd. 2020
 info@abodo.co.nz
 T +64 (9) 249 0100

SHEET TITLE

Meter Box Sill

PROFILE

Bevel Back Weatherboard

SCALE: 1:2 @ A4

PRINT DATE: 01/04/2020

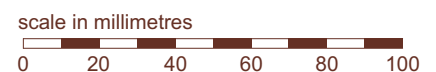
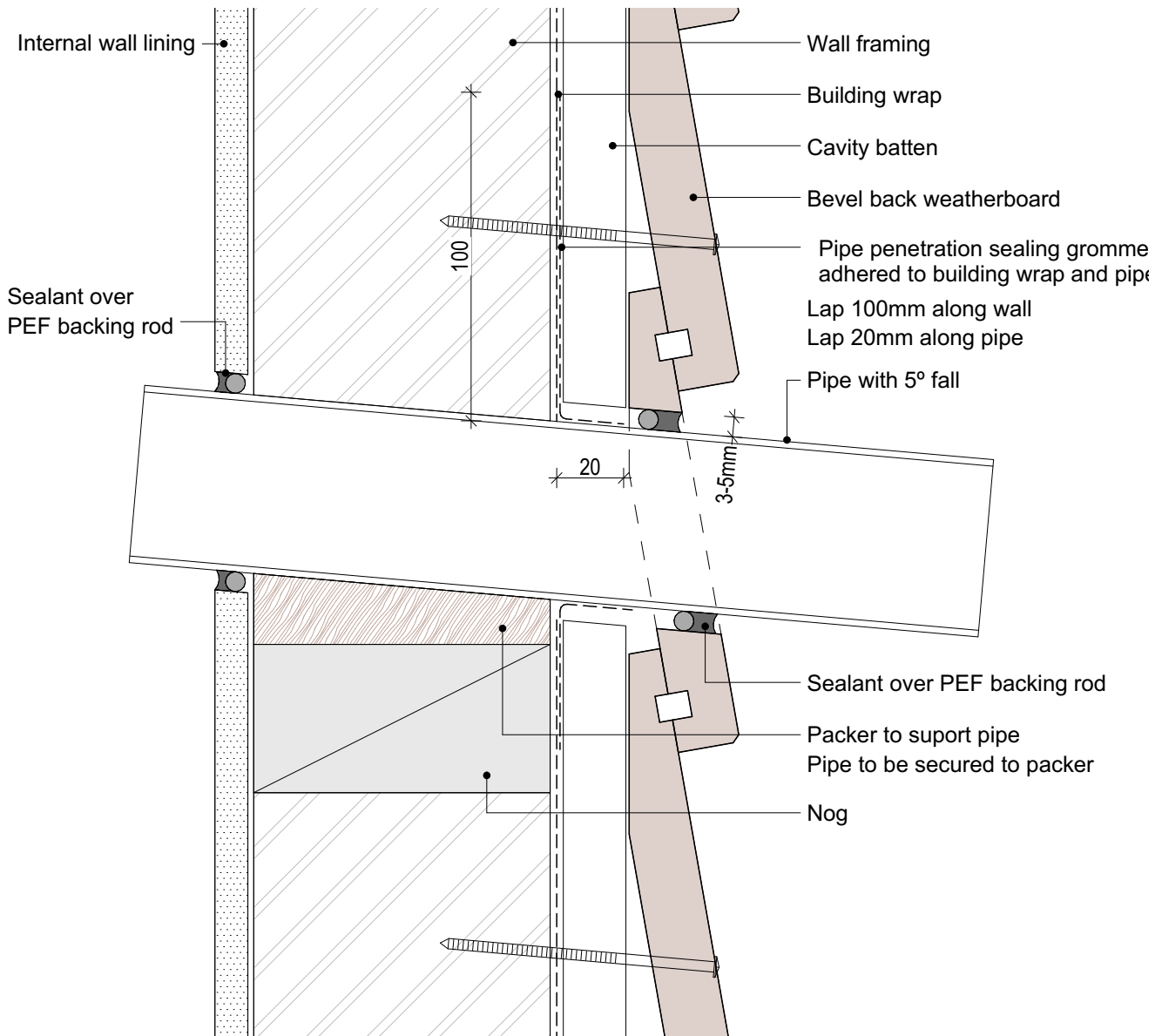
SHEET NUMBER

B.C.21

REVISION

01

1. Weatherboards must be coated with at least one coat all sides prior to fixing.
2. Fixing points must be pre-drilled minimum 1mm smaller than the fastener.
3. Cut ends and exposed timber must be sealed with an approved coating or end seal.



© Abodo Wood Ltd. 2020
info@abodo.co.nz
T +64 (9) 249 0100

SHEET TITLE

Pipe Penetration

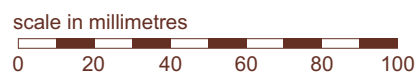
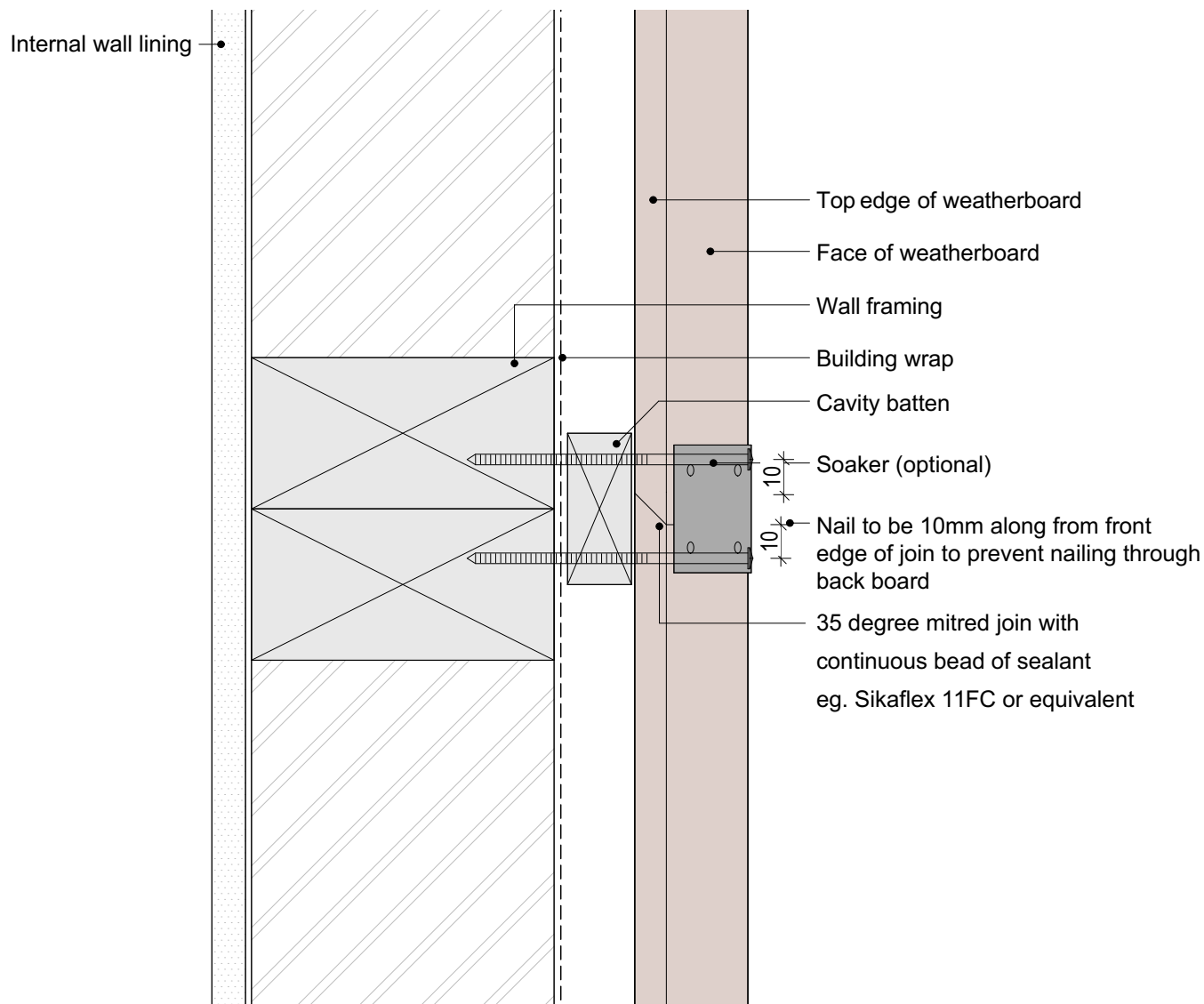
PROFILE

Bevel Back Weatherboard

SCALE: 1:2 @ A4
PRINT DATE: 01/04/2020

SHEET NUMBER REVISION
B.C.22 01

1. Weatherboards must be coated with at least one coat all sides prior to fixing.
2. Fixing points must be pre-drilled minimum 1mm smaller than the fastener.
3. Cut ends and exposed timber must be sealed with an approved coating or end seal.



© Abodo Wood Ltd. 2020
info@abodo.co.nz
T +64 (9) 249 0100

SHEET TITLE

Weatherboard Fix - Birdseye

PROFILE

Bevel Back Weatherboard

SCALE:

1:2 @ A4

PRINT
DATE:

01/04/2020

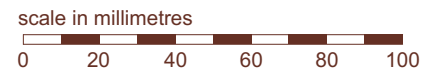
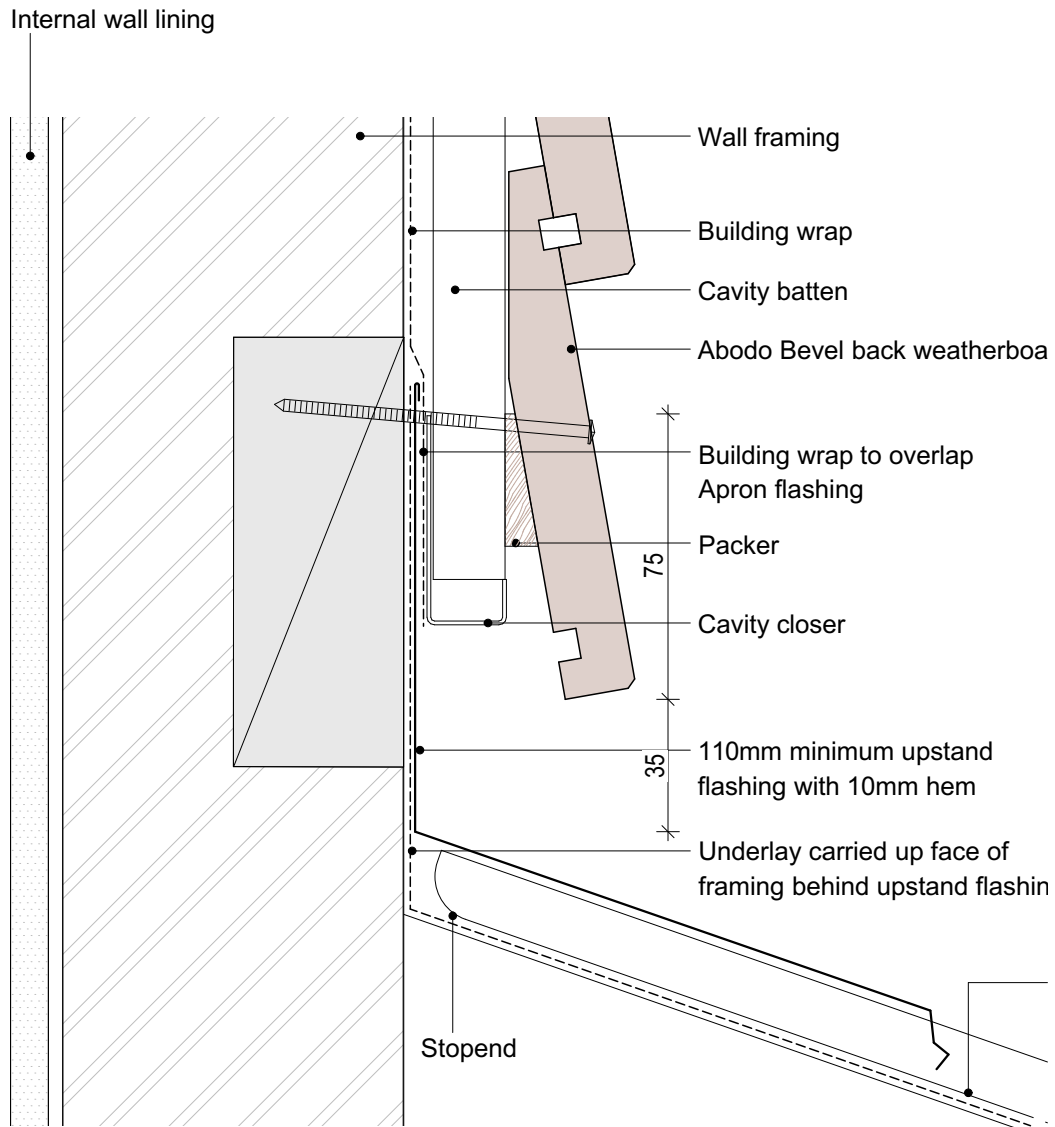
SHEET NUMBER

B.C.23

REVISION

01

1. Weatherboards must be coated with at least one coat all sides prior to fixing.
2. Fixing points must be pre-drilled minimum 1mm smaller than the fastener.
3. Cut ends and exposed timber must be sealed with an approved coating or end seal.



© Abodo Wood Ltd. 2020
info@abodo.co.nz
T +64 (9) 249 0100

SHEET TITLE

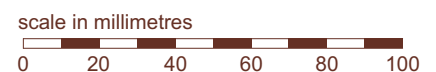
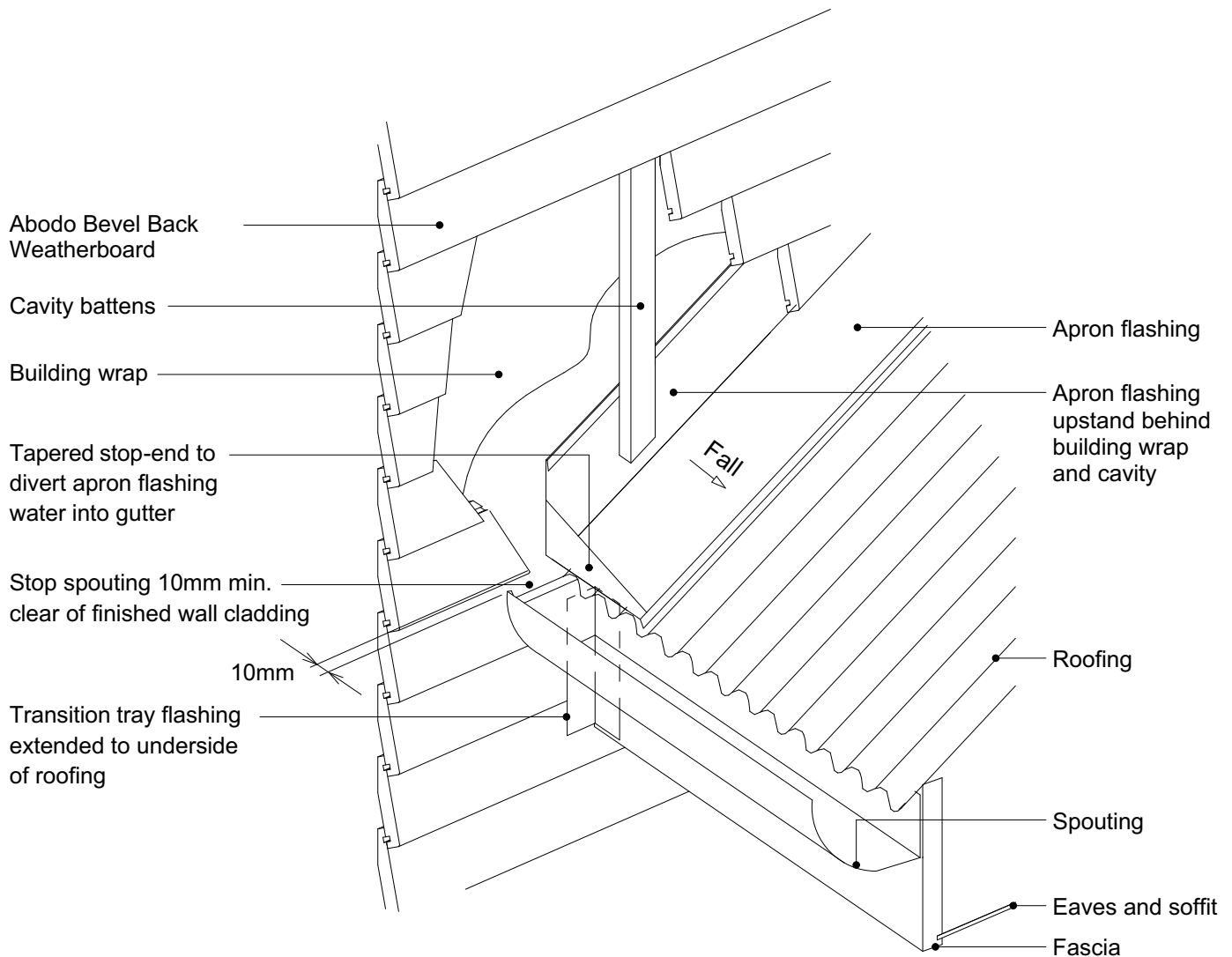
Apron Flahing

PROFILE
Bevel Back Weatherboard

SCALE:
1:2 @ A4
PRINT
DATE: 01/04/2020

SHEET NUMBER
B.C.24
REVISION
01

1. Weatherboards must be coated with at least one coat all sides prior to fixing.
2. Fixing points must be pre-drilled minimum 1mm smaller than the fastener.
3. Cut ends and exposed timber must be sealed with an approved coating or end seal.



© Abodo Wood Ltd. 2020
info@abodo.co.nz
T +64 (9) 249 0100

SHEET TITLE

Roof Kick-out Flashing Cavity

PROFILE

Bevel Back Weatherboard

SCALE:

1:2 @ A4

PRINT DATE:

01/04/2020

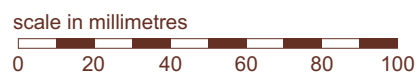
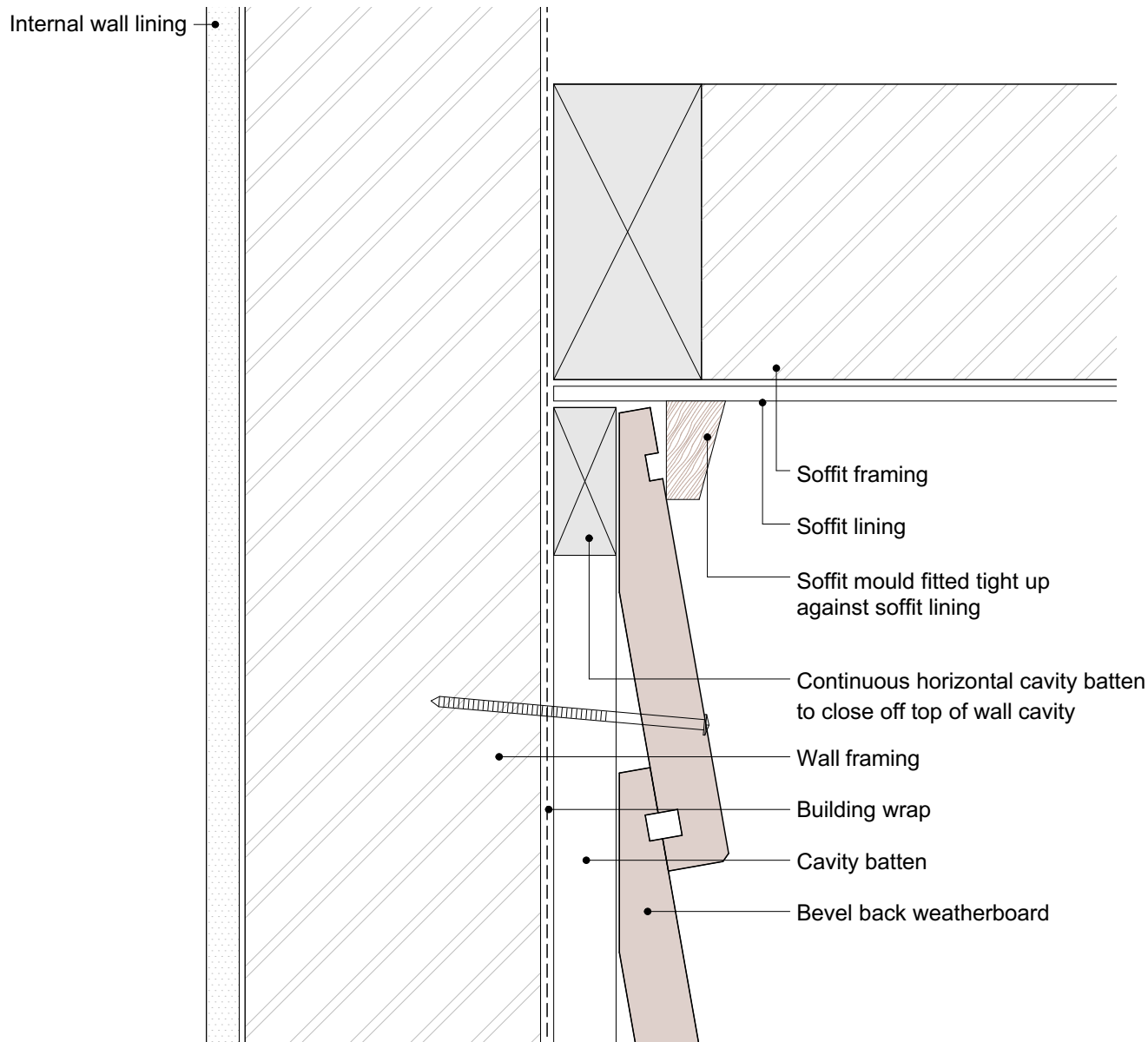
SHEET NUMBER

B.C.25

REVISION

01

1. Weatherboards must be coated with at least one coat all sides prior to fixing.
2. Fixing points must be pre-drilled minimum 1mm smaller than the fastener.
3. Cut ends and exposed timber must be sealed with an approved coating or end seal.



© Abodo Wood Ltd. 2020
info@abodo.co.nz
T +64 (9) 249 0100

SHEET TITLE

Top Of Wall - Flat Soffit

PROFILE

Bevel Back Weatherboard

SCALE:

1:2 @ A4

PRINT DATE:

01/04/2020

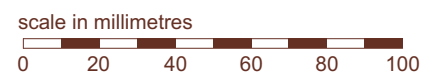
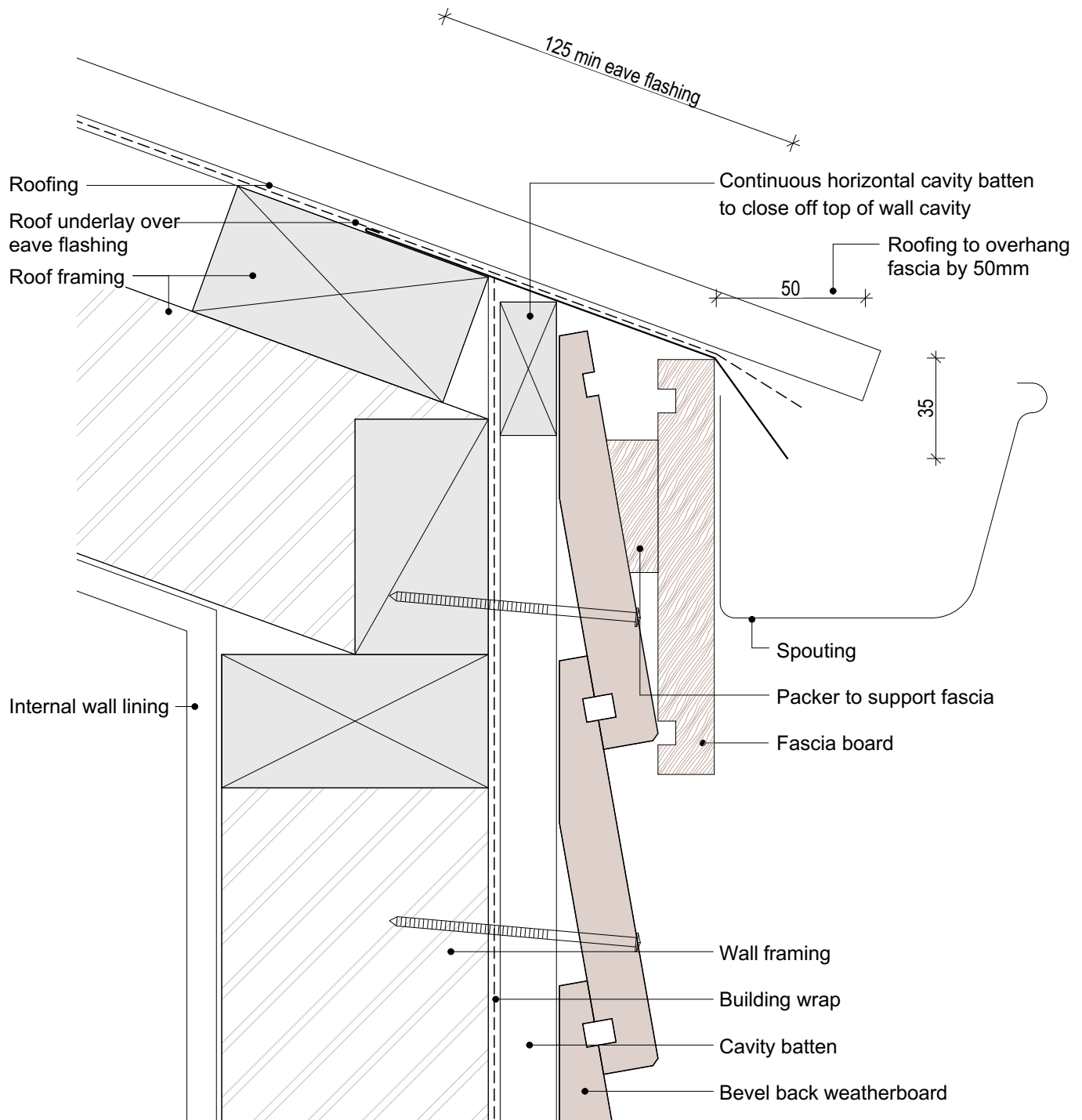
SHEET NUMBER

B.C.26

REVISION

01

1. Weatherboards must be coated with at least one coat all sides prior to fixing.
2. Fixing points must be pre-drilled minimum 1mm smaller than the fastener.
3. Cut ends and exposed timber must be sealed with an approved coating or end seal.



© Abodo Wood Ltd. 2020
info@abodo.co.nz
T +64 (9) 249 0100

SHEET TITLE

Top Of Wall - No Soffit

PROFILE

Bevel Back Weatherboard

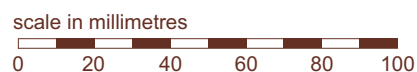
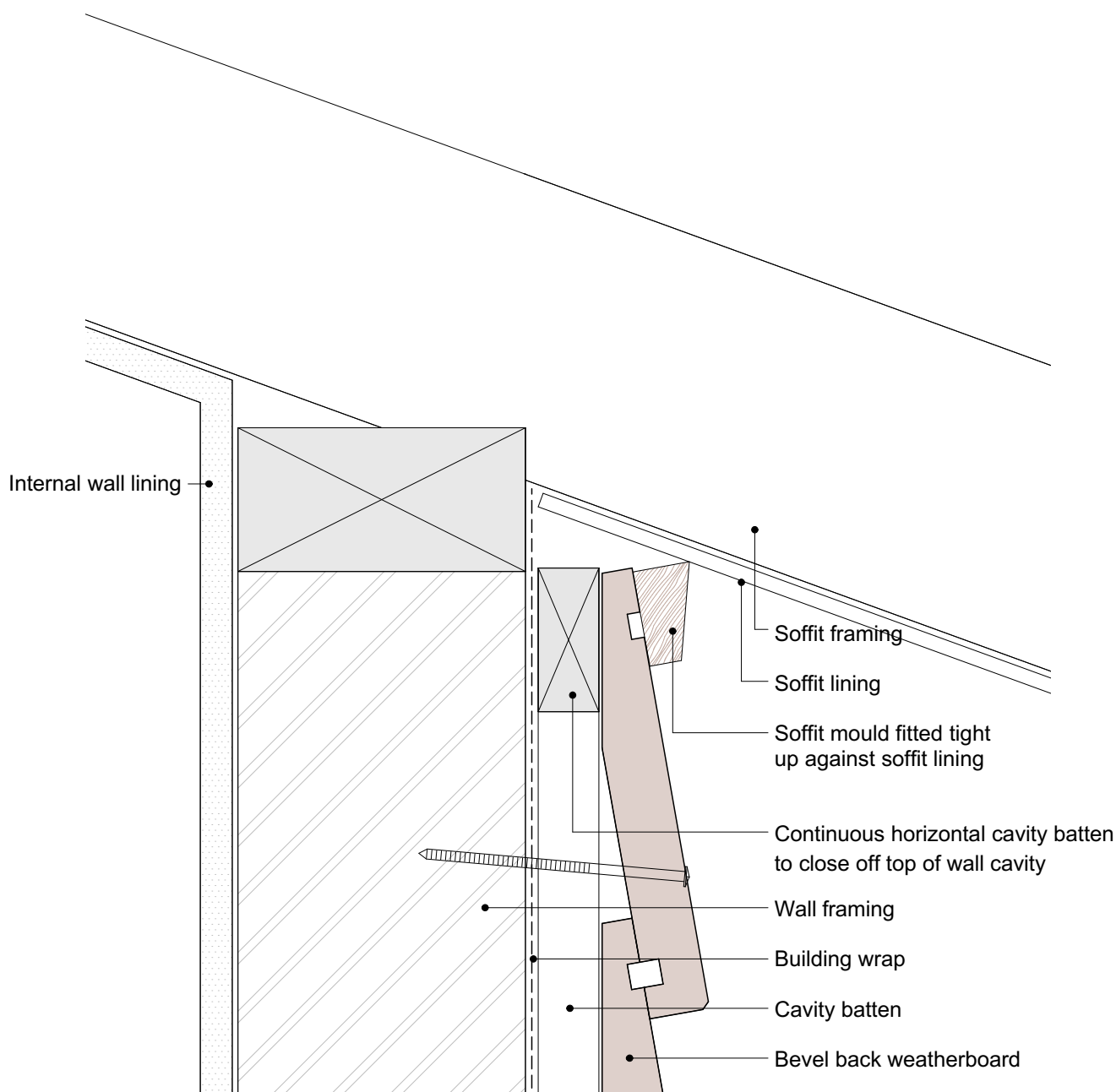
SCALE: 1:2 @ A4

PRINT DATE: 01/04/2020

SHEET NUMBER REVISION

B.C.27 **01**

1. Weatherboards must be coated with at least one coat all sides prior to fixing.
2. Fixing points must be pre-drilled minimum 1mm smaller than the fastener.
3. Cut ends and exposed timber must be sealed with an approved coating or end seal.



© Abodo Wood Ltd. 2020
info@abodo.co.nz
T +64 (9) 249 0100

SHEET TITLE

Top Of Wall - Slopping Soffit

PROFILE

Bevel Back Weatherboard

SCALE:

1:2 @ A4

PRINT DATE:

01/04/2020

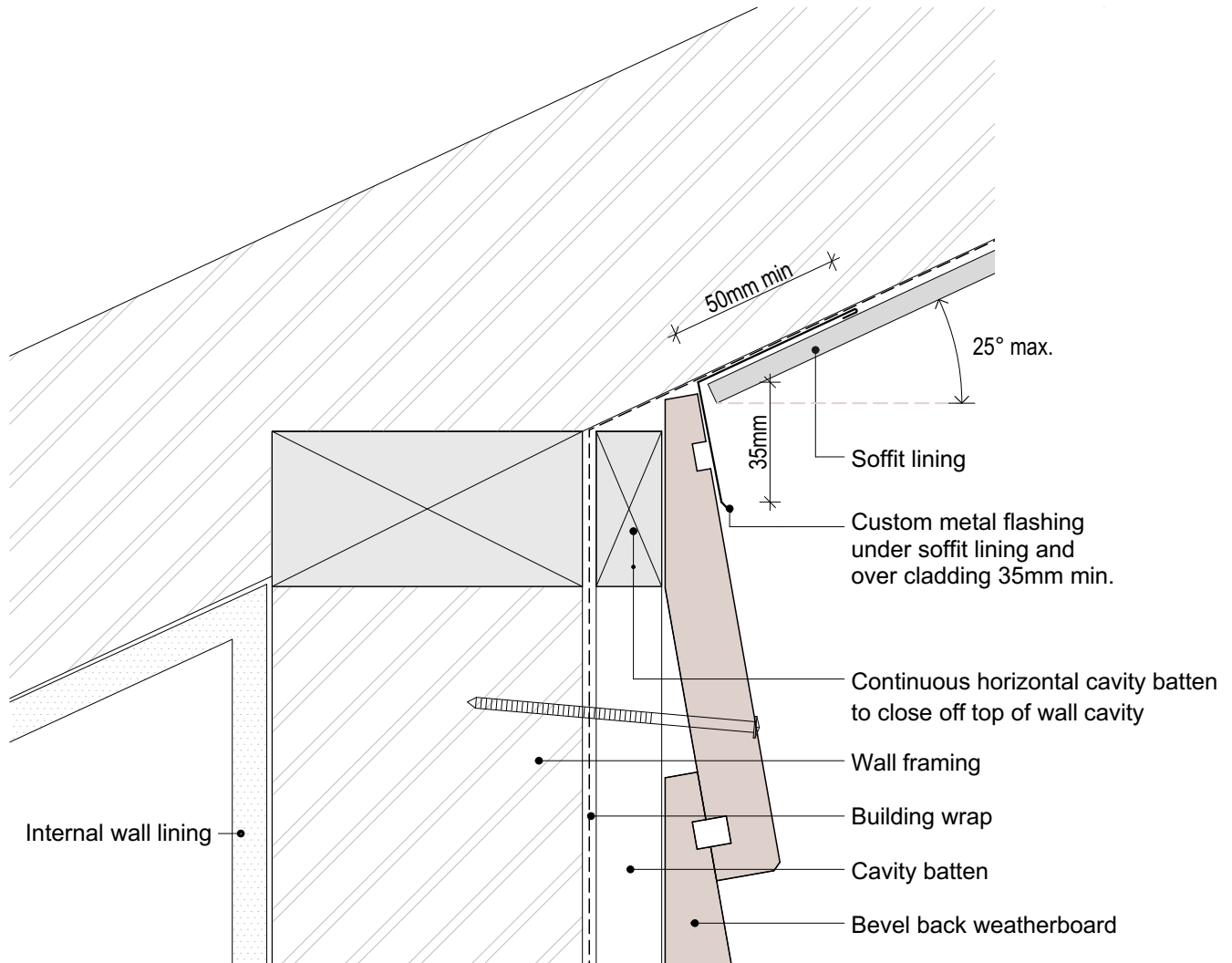
SHEET NUMBER

B.C.28

REVISION

01

1. Weatherboards must be coated with at least one coat all sides prior to fixing.
2. Fixing points must be pre-drilled minimum 1mm smaller than the fastener.
3. Cut ends and exposed timber must be sealed with an approved coating or end seal.



© Abodo Wood Ltd. 2020
info@abodo.co.nz
T +64 (9) 249 0100

SHEET TITLE

Top Of Wall - Raking Soffit

PROFILE

Bevel Back Weatherboard

SCALE:

1:2 @ A4

PRINT
DATE:

01/04/2020

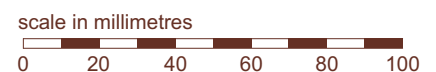
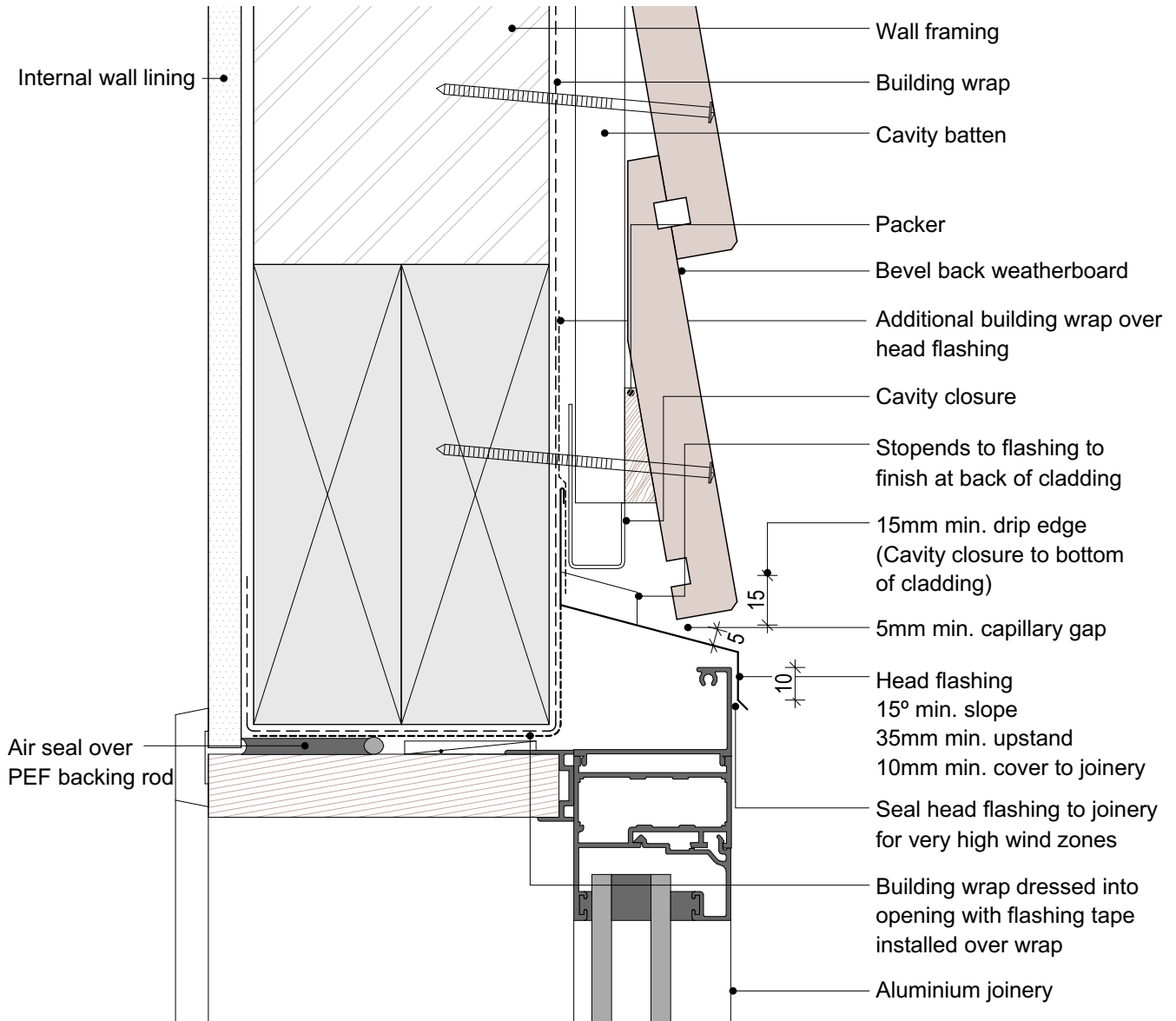
SHEET NUMBER

B.C.29

REVISION

01

1. Weatherboards must be coated with at least one coat all sides prior to fixing.
2. Fixing points must be pre-drilled minimum 1mm smaller than the fastener.
3. Cut ends and exposed timber must be sealed with an approved coating or end seal.



© Abodo Wood Ltd. 2020
info@abodo.co.nz
T +64 (9) 249 0100

SHEET TITLE

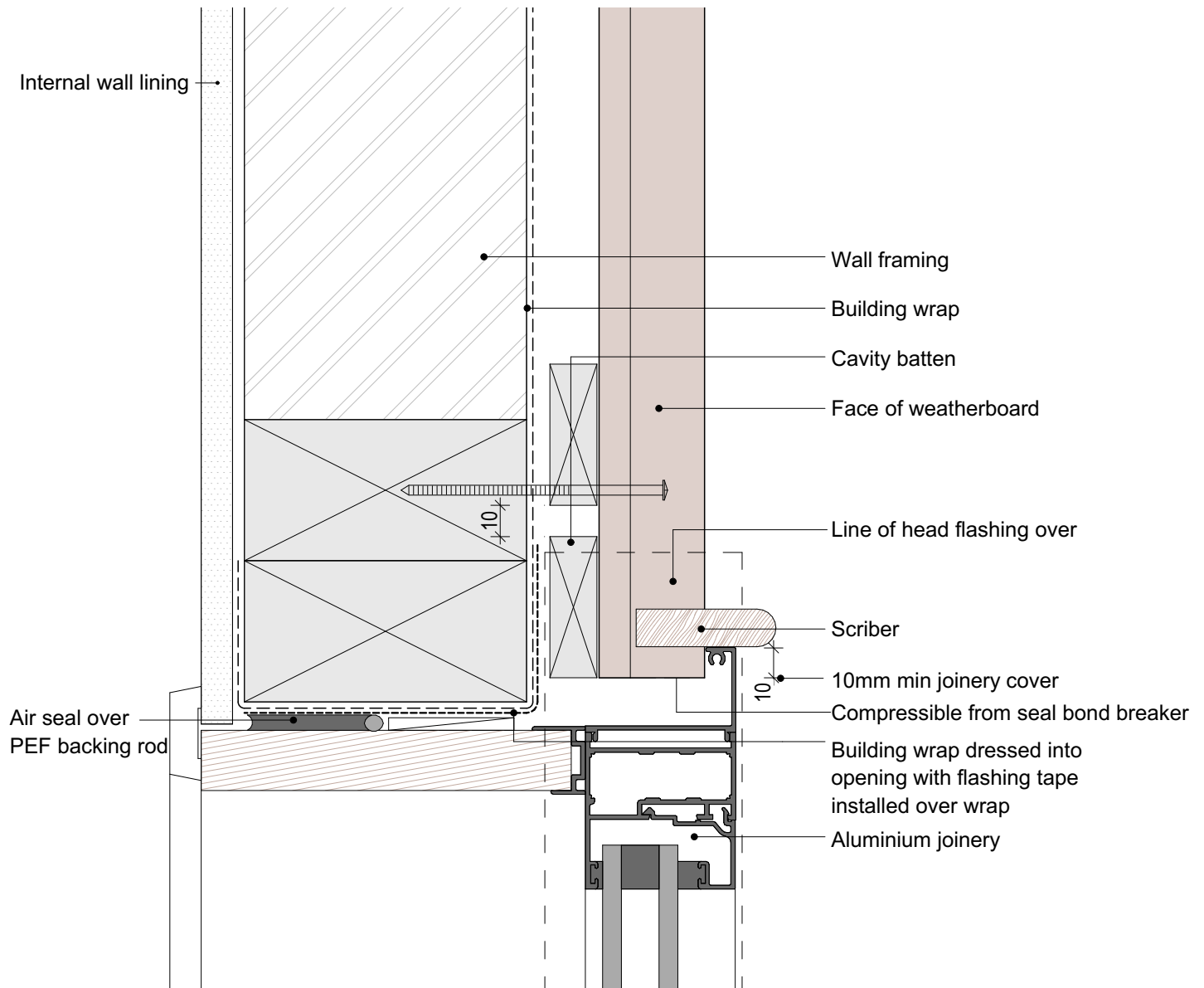
Window Head

PROFILE
Bevel Back Weatherboard

SCALE:
1:2 @ A4
PRINT DATE: 01/04/2020

SHEET NUMBER
B.C.30
REVISION
01

1. Weatherboards must be coated with at least one coat all sides prior to fixing.
2. Fixing points must be pre-drilled minimum 1mm smaller than the fastener.
3. Cut ends and exposed timber must be sealed with an approved coating or end seal.



scale in millimetres

0 20 40 60 80 100



© Abodo Wood Ltd. 2020
info@abodo.co.nz
T +64 (9) 249 0100

SHEET TITLE

Window Jamb

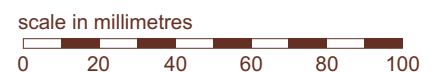
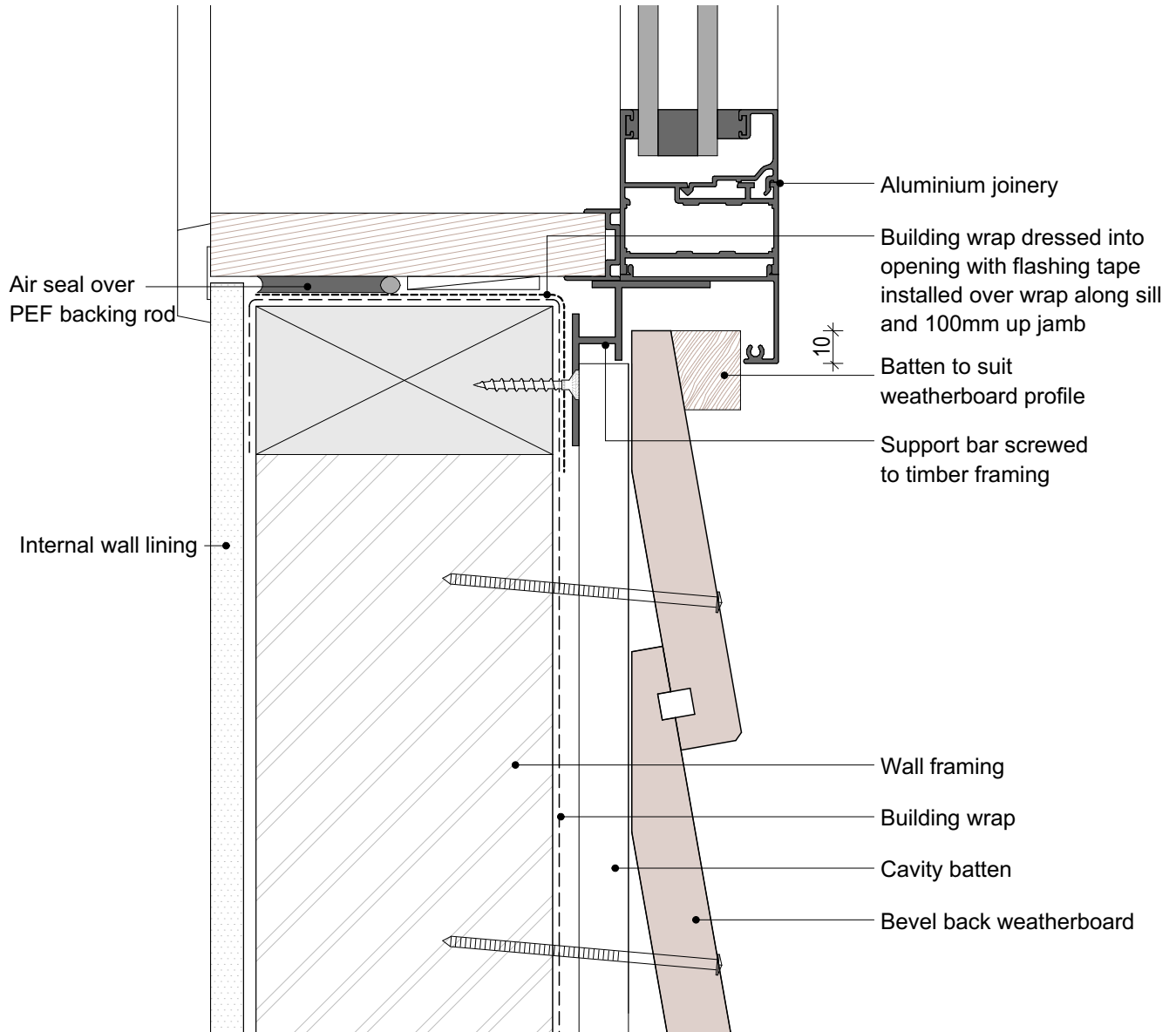
PROFILE

Bevel Back Weatherboard

SCALE: 1:2 @ A4
PRINT DATE: 01/04/2020

SHEET NUMBER REVISION
B.C.31 01

1. Weatherboards must be coated with at least one coat all sides prior to fixing.
2. Fixing points must be pre-drilled minimum 1mm smaller than the fastener.
3. Cut ends and exposed timber must be sealed with an approved coating or end seal.



© Abodo Wood Ltd. 2020
info@abodo.co.nz
T +64 (9) 249 0100

SHEET TITLE

Window Sill

PROFILE
Bevel Back Weatherboard

SCALE:
1:2 @ A4
PRINT DATE: 01/04/2020

SHEET NUMBER
B.C.32
REVISION
01