
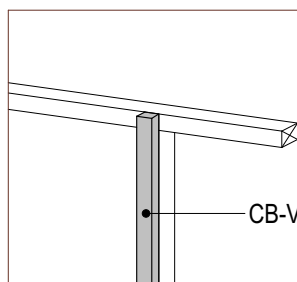
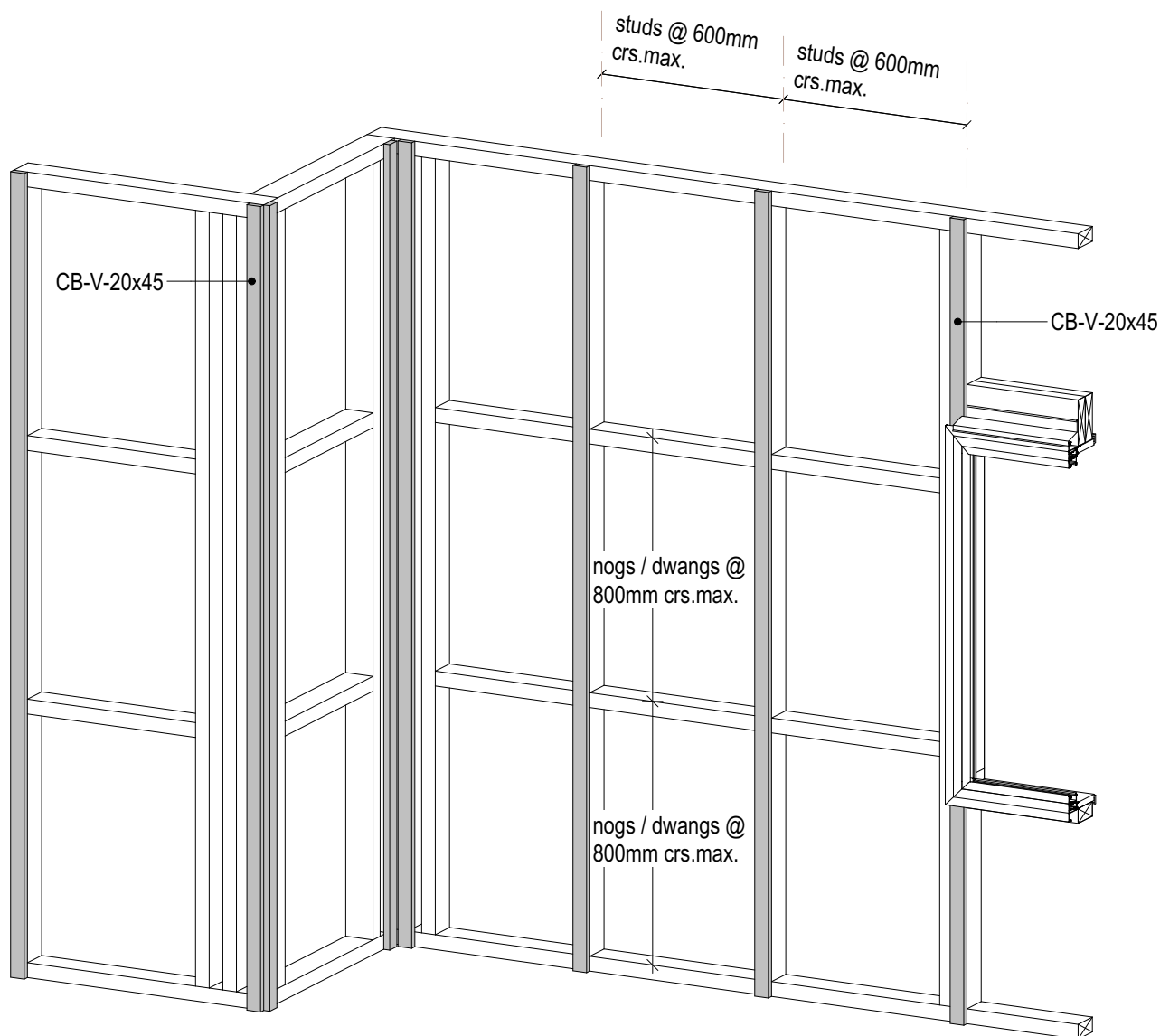


# Rusticated Weatherboard

Sheet Index		
Sheet No:	Revision:	Sheet Name:
R.C.1	01	Vertical Batten Fix
R.C.2	01	Base of wall - concrete floor
R.C.3	01	Base of wall - Timber floor
R.C.4	01	Inter-Storey Cavity Junction
R.C.5	01	Packer Cavity Batten - Painted
R.C.6	01	Packer Cavity Batten Stained
R.C.7	01	External 90° Corner - Boxed
R.C.8	01	External 135° Corner - Boxed
R.C.9	01	Internal 90° corner- W Flashing
R.C.10	01	Internal 90° Corner - With AW46 Moulding
R.C.11	01	Internal 135° Corner - W Flashing
R.C.12	01	Enclosed Deck - Concrete Substrate
R.C.13	01	Enclosed Deck - Timber Substrate
R.C.14	01	Parapet Balustrade Cap Flashing
R.C.15	01	Parapet Balustrade Intersection With Wall - Butted
R.C.16	01	Meter Box Head
R.C.17	01	Meter Box Jamb
R.C.18	01	Meter Box Sill
R.C.19	01	Pipe Penetration
R.C.20	01	Weatherboard Fix - Birdseye
R.C.21	01	Apron Flahing
R.C.22	01	Roof Kick-out Flashing Cavity
R.C.23	01	Top Of Wall - Flat Soffit
R.C.24	01	Top Of Wall - No Soffit
R.C.25	01	Top Of Wall - Slopping Soffit
R.C.26	01	Top Of Wall - Raking Soffit
R.C.27	01	Window Head
R.C.28	01	Window Jamb
R.C.29	01	Window Sill
R.C.30	01	Window Jamb - Option 2



<div>CM70046</div> <div></div> <div>Codemark™</div>	© Abodo Wood Ltd. 2020  info@abodo.co.nz T +64 (9) 249 0100	SHEET TITLE				
	Abodo Wood Ltd. 62 Ascot Road, Mangere, Auckland 2022, New Zealand	PROFILE  Rusticated Weatherboard	SCALE:  - @ A4		SHEET NUMBER	REVISION
			PRINT DATE: 01/04/2020		R.C.	01



### **Structural Batten Fix**

Use CB-V-45x45  
Fixed at max. 600mm centres with  
4.0x90mm S.S. flat head nails or  
8g x 75mm S.S. screws staggered  
12mm of the centre line.



© Abodo Wood Ltd. 2020  
info@abodo.co.nz  
T +64 (9) 249 0100

SHEET TITLE

## **Vertical Batten Fix**

PROFILE

Rusticated Weatherboard

SCALE: NTS @ A4  
PRINT DATE: 01/04/2020

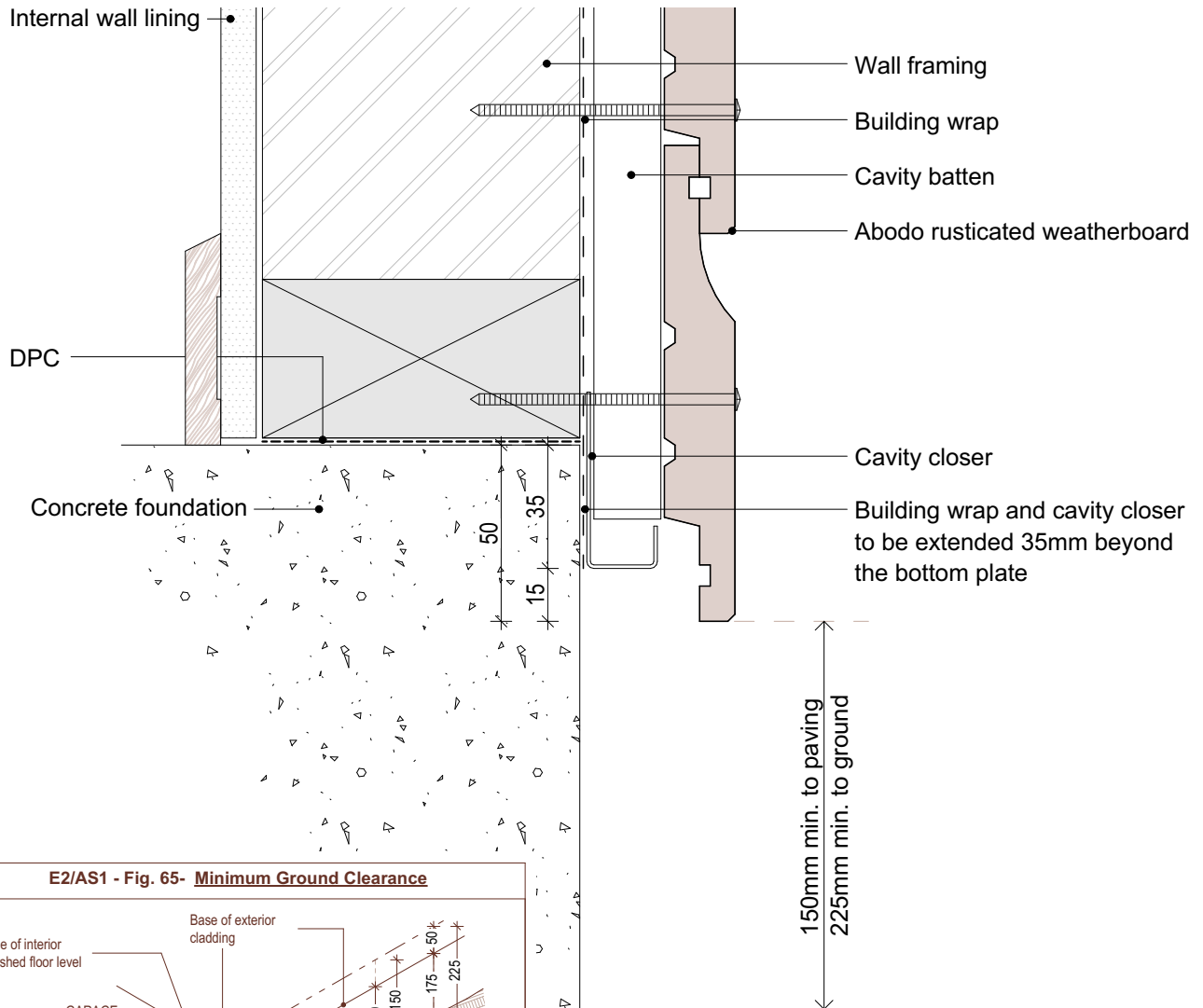
SHEET NUMBER

**R.C.1**

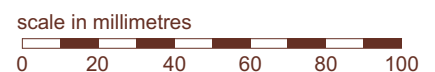
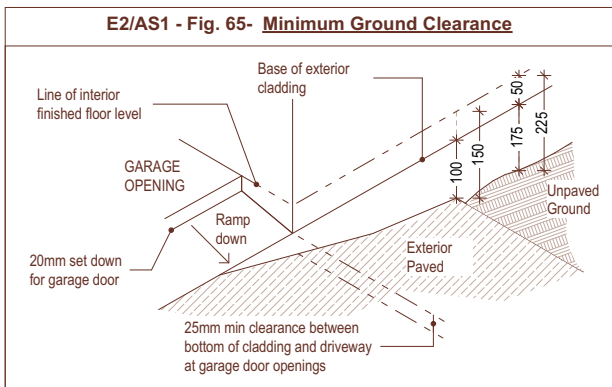
REVISION

**01**

1. Weatherboards must be coated with at least one coat all sides prior to fixing.
2. Fixing points must be pre-drilled minimum 1mm smaller than the fastener.
3. Cut ends and exposed timber must be sealed with an approved coating or end seal.



E2/AS1 - Fig. 65- Minimum Ground Clearance



© Abodo Wood Ltd. 2020  
info@abodo.co.nz  
T +64 (9) 249 0100

SHEET TITLE

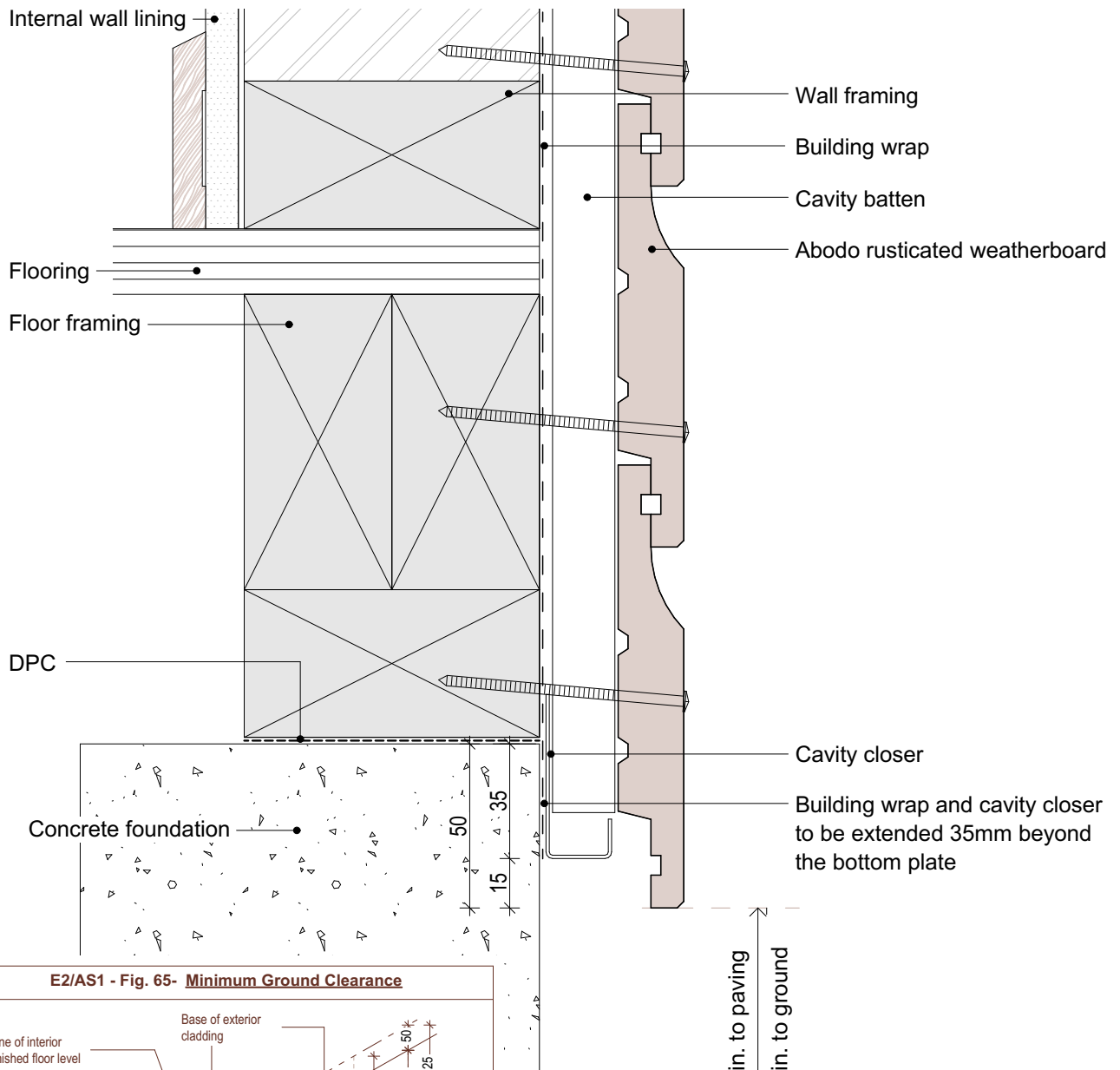
Base of wall - concrete floor

PROFILE  
Rusticated Weatherboard

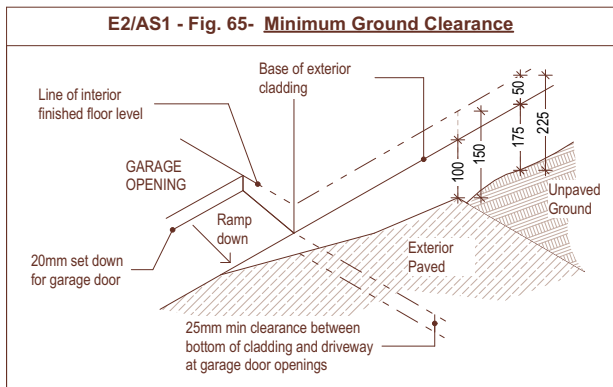
SCALE:  
1:2 @ A4  
PRINT DATE: 01/04/2020

SHEET NUMBER  
**R.C.2**  
REVISION  
**01**

1. Weatherboards must be coated with at least one coat all sides prior to fixing.
2. Fixing points must be pre-drilled minimum 1mm smaller than the fastener.
3. Cut ends and exposed timber must be sealed with an approved coating or end seal.



E2/AS1 - Fig. 65- Minimum Ground Clearance



0mm min. to paving  
5mm min. to ground



scale in millimetres  
0 20 40 60 80 100



© Abodo Wood Ltd. 2020  
info@abodo.co.nz  
T +64 (9) 249 0100

SHEET TITLE

Base of wall - Timber floor

PROFILE

Rusticated Weatherboard

SCALE: 1:2 @ A4  
PRINT DATE: 01/04/2020

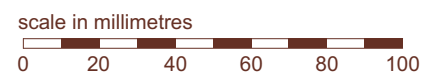
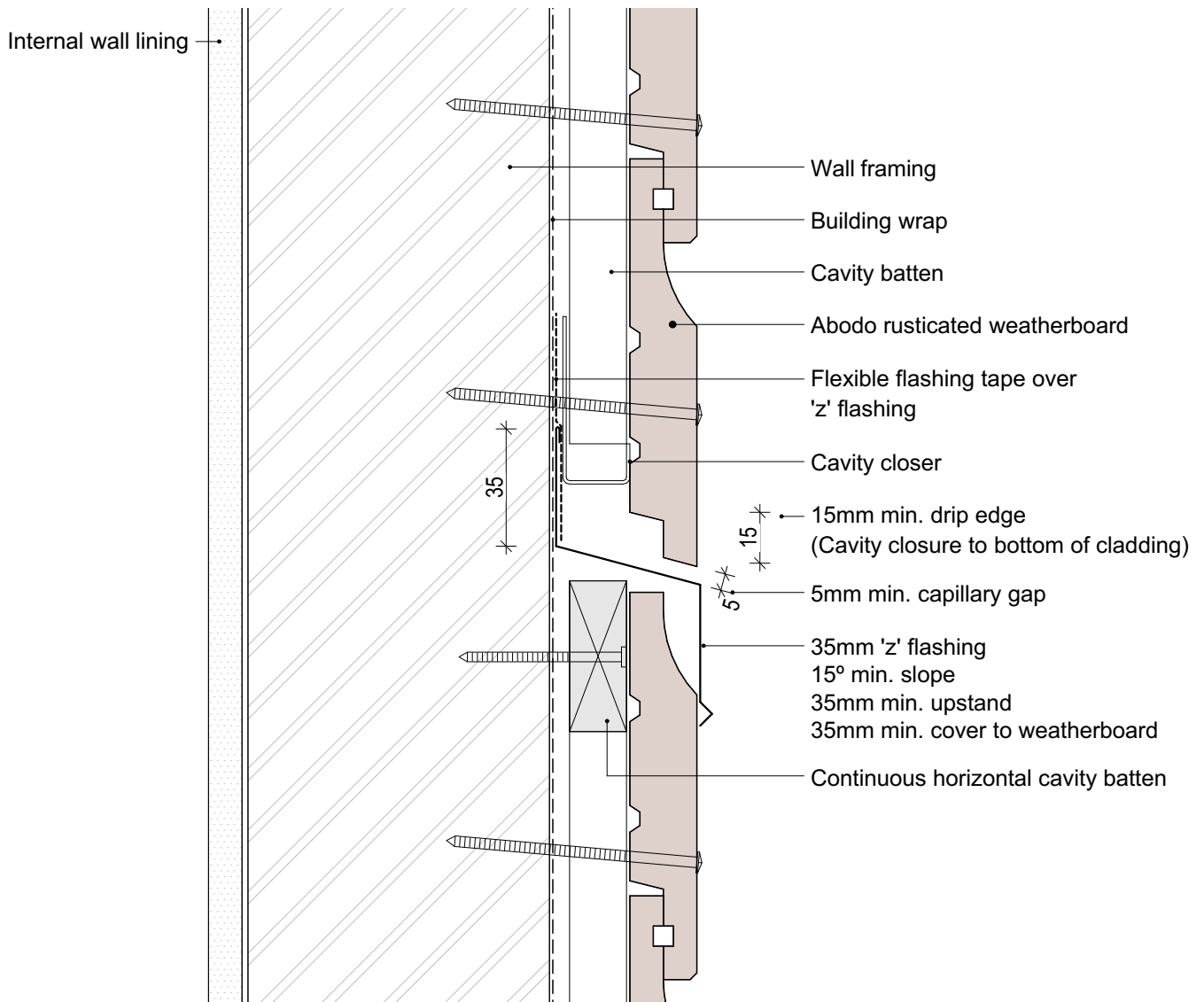
SHEET NUMBER

R.C.3

REVISION

01

1. Weatherboards must be coated with at least one coat all sides prior to fixing.
2. Fixing points must be pre-drilled minimum 1mm smaller than the fastener.
3. Cut ends and exposed timber must be sealed with an approved coating or end seal.



© Abodo Wood Ltd. 2020  
info@abodo.co.nz  
T +64 (9) 249 0100

SHEET TITLE

## Inter-Storey Cavity Junction

PROFILE

Rusticated Weatherboard

SCALE:

1:2 @ A4

PRINT DATE:

01/04/2020

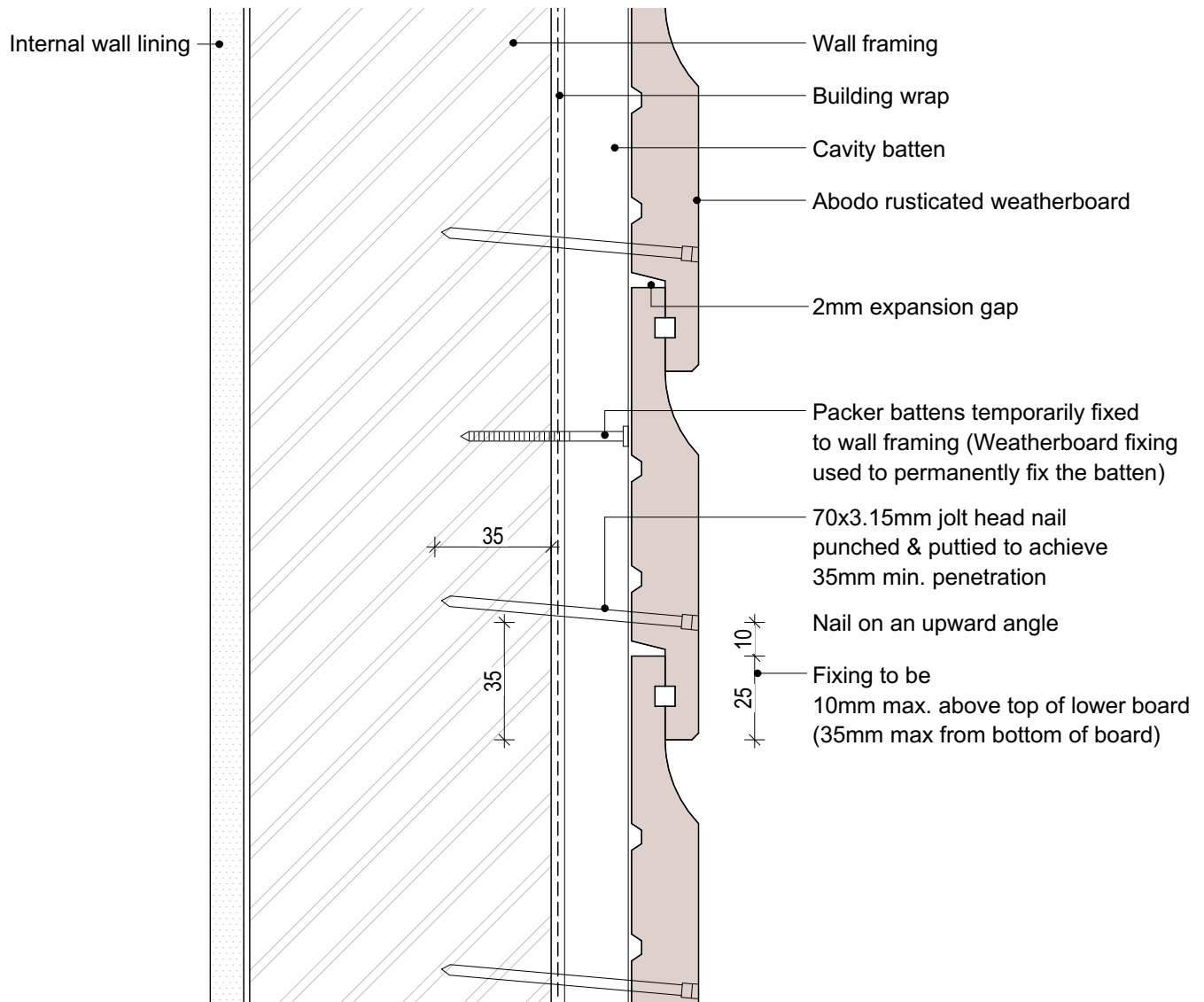
SHEET NUMBER

**R.C.4**

REVISION

**01**

1. Weatherboards must be coated with at least one coat all sides prior to fixing.
2. Fixing points must be pre-drilled minimum 1mm smaller than the fastener.
3. Cut ends and exposed timber must be sealed with an approved coating or end seal.



© Abodo Wood Ltd. 2020  
info@abodo.co.nz  
T +64 (9) 249 0100

SHEET TITLE

## Packer Cavity Batten - Painted

PROFILE

Rusticated Weatherboard

SCALE:

1:2 @ A4

PRINT DATE:

01/04/2020

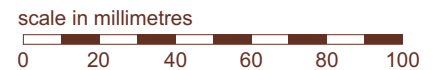
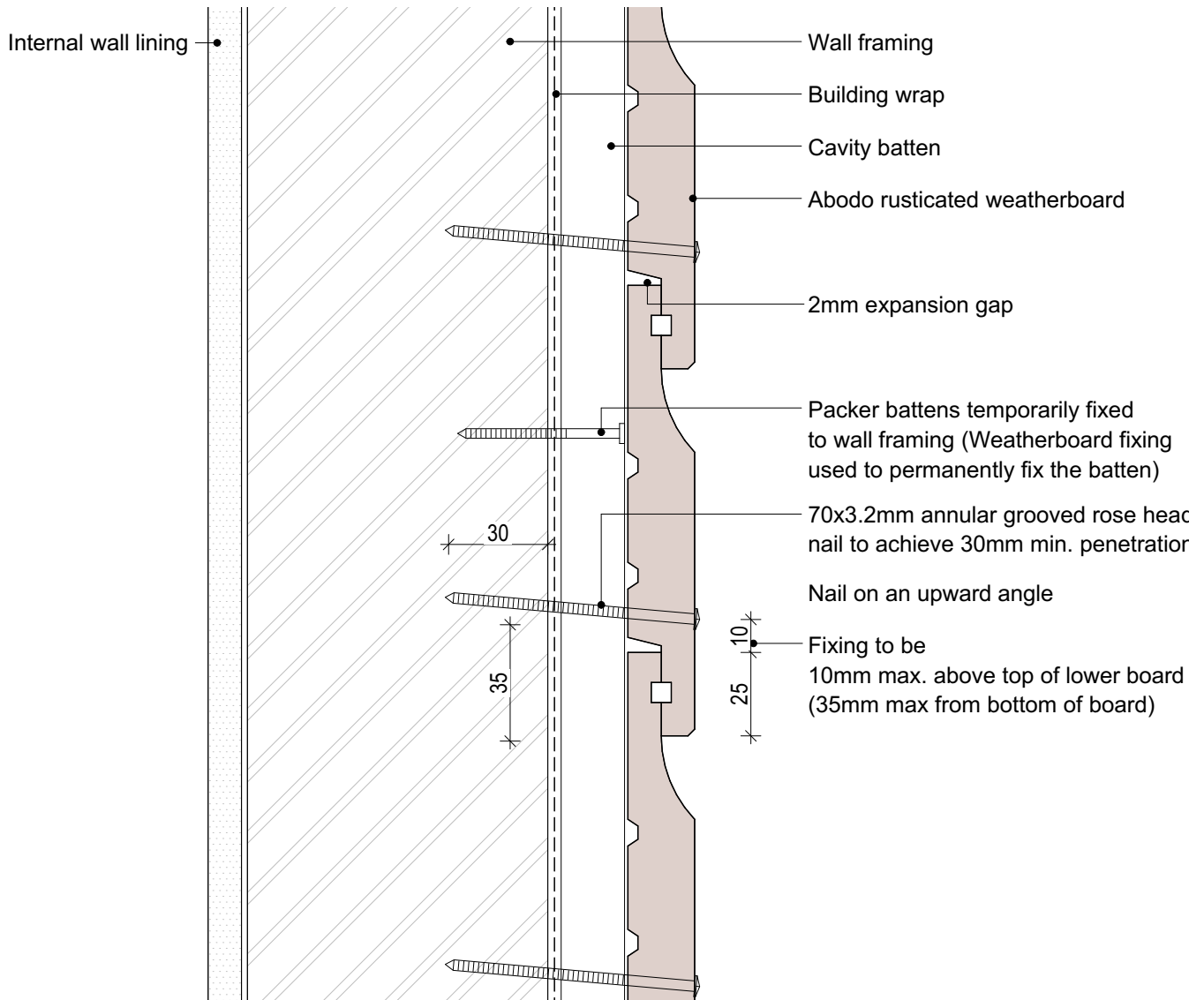
SHEET NUMBER

**R.C.5**

REVISION

**01**

1. Weatherboards must be coated with at least one coat all sides prior to fixing.
2. Fixing points must be pre-drilled minimum 1mm smaller than the fastener.
3. Cut ends and exposed timber must be sealed with an approved coating or end seal.



© Abodo Wood Ltd. 2020  
info@abodo.co.nz  
T +64 (9) 249 0100

SHEET TITLE

Packer Cavity Batten Stained

PROFILE

Rusticated Weatherboard

SCALE: 1:2 @ A4

PRINT DATE: 01/04/2020

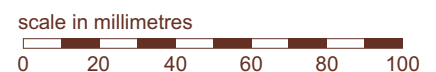
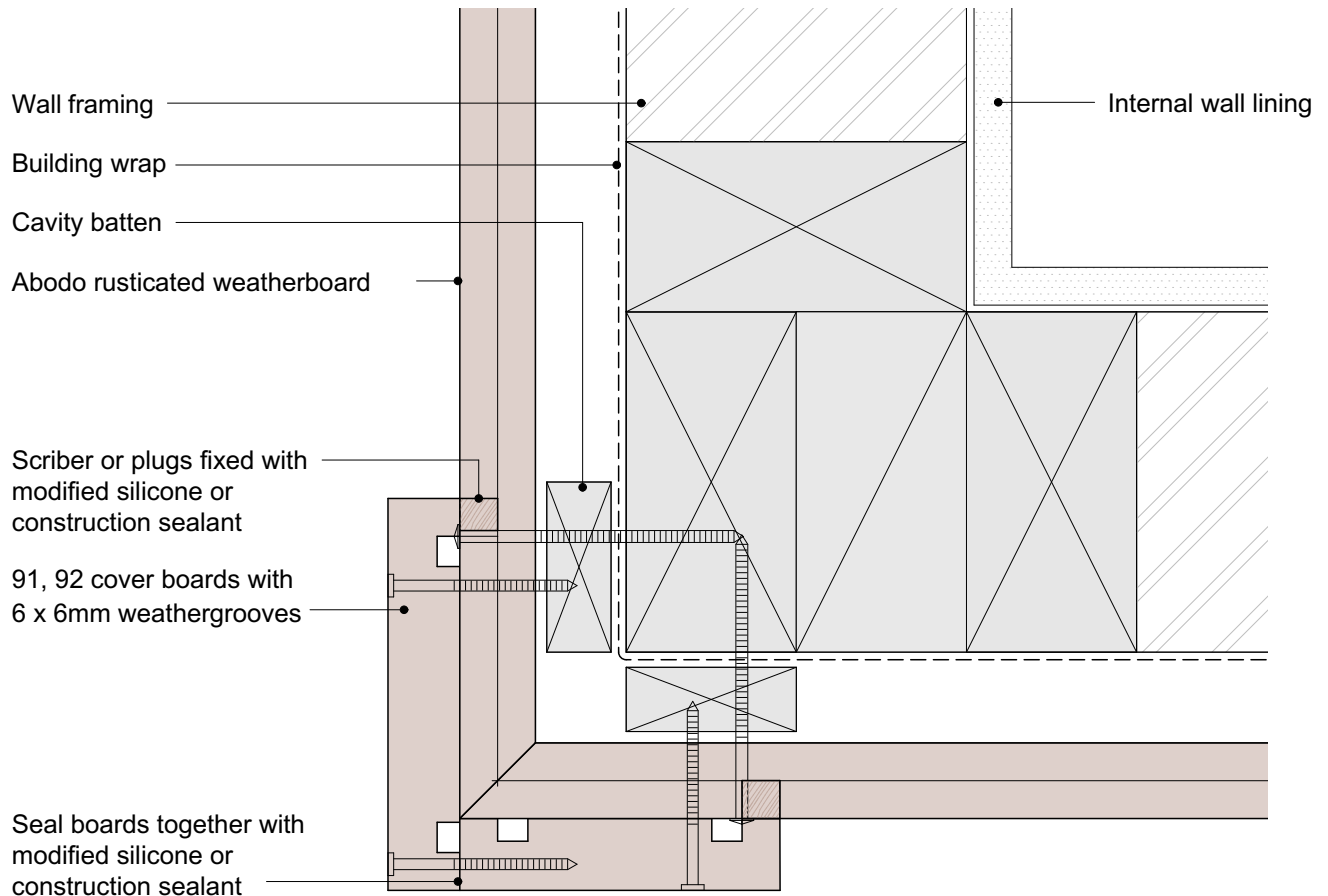
SHEET NUMBER

R.C.6

REVISION

01

1. Weatherboards must be coated with at least one coat all sides prior to fixing.
2. Fixing points must be pre-drilled minimum 1mm smaller than the fastener.
3. Cut ends and exposed timber must be sealed with an approved coating or end seal.



© Abodo Wood Ltd. 2020  
info@abodo.co.nz  
T +64 (9) 249 0100

SHEET TITLE

External 90° Corner - Boxed

PROFILE

Rusticated Weatherboard

SCALE: 1:2 @ A4

PRINT DATE: 01/04/2020

SHEET NUMBER

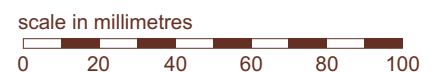
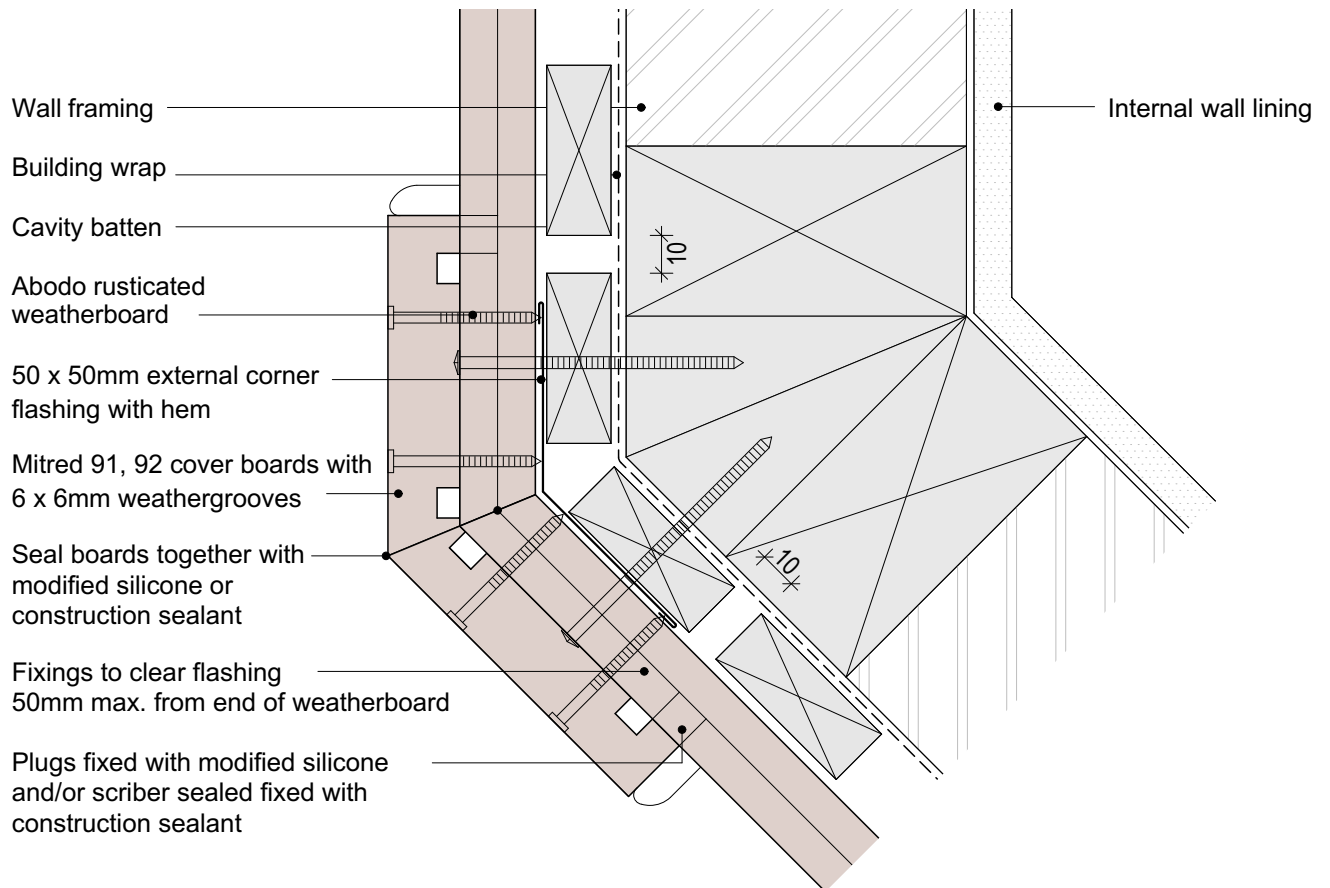
R.C.7

REVISION

01



1. Weatherboards must be coated with at least one coat all sides prior to fixing.
2. Fixing points must be pre-drilled minimum 1mm smaller than the fastener.
3. Cut ends and exposed timber must be sealed with an approved coating or end seal.



© Abodo Wood Ltd. 2020  
info@abodo.co.nz  
T +64 (9) 249 0100

SHEET TITLE

## External 135° Corner - Boxed

PROFILE

Rusticated Weatherboard

SCALE:

1:2 @ A4

PRINT DATE:

01/04/2020

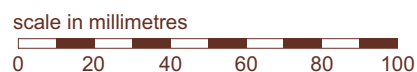
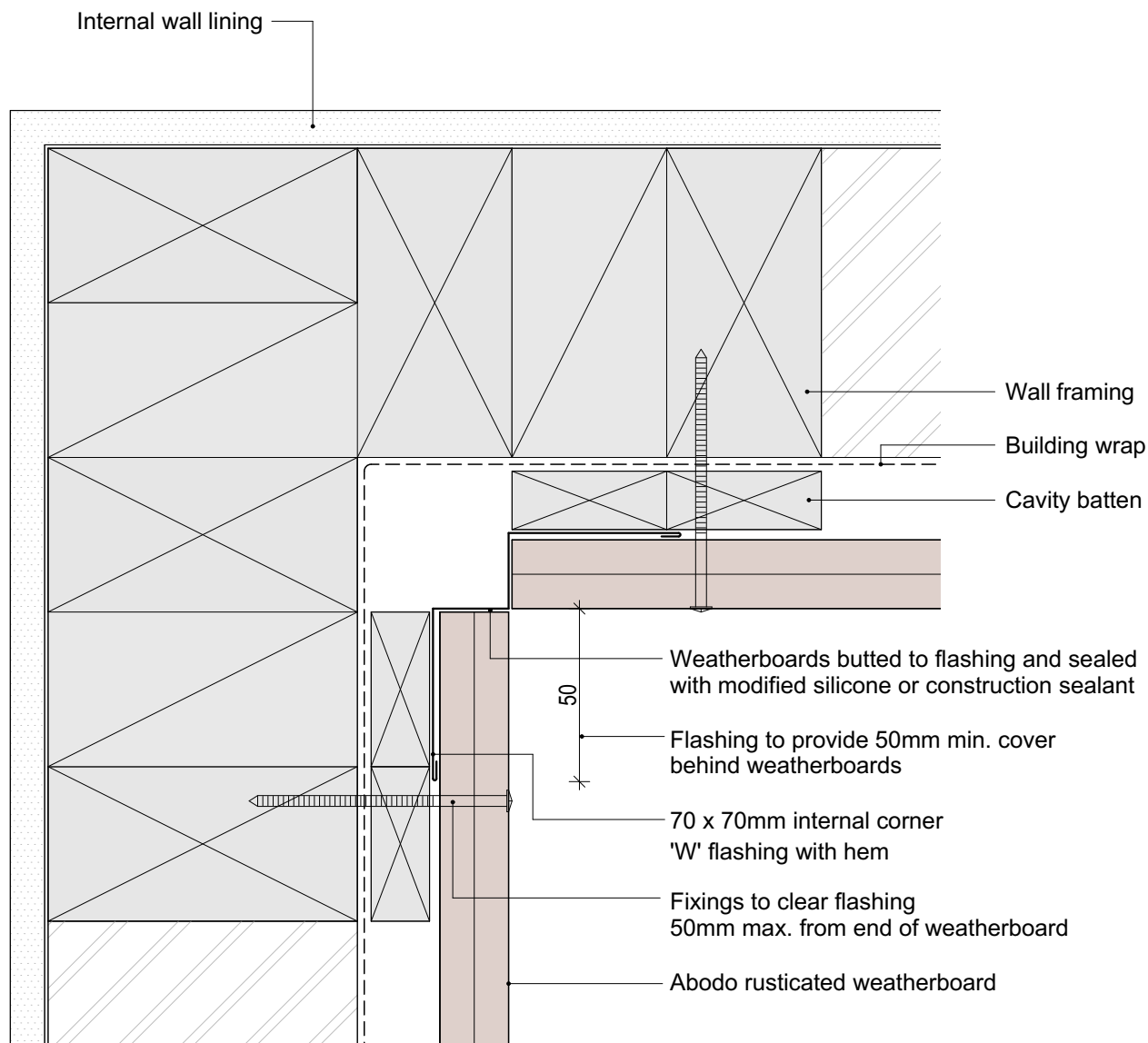
SHEET NUMBER

**R.C.8**

REVISION

**01**

1. Weatherboards must be coated with at least one coat all sides prior to fixing.
2. Fixing points must be pre-drilled minimum 1mm smaller than the fastener.
3. Cut ends and exposed timber must be sealed with an approved coating or end seal.



© Abodo Wood Ltd. 2020  
info@abodo.co.nz  
T +64 (9) 249 0100

SHEET TITLE

Internall 90° corner- W Flashing

PROFILE

Rusticated Weatherboard

SCALE: 1:2 @ A4  
PRINT DATE: 01/04/2020

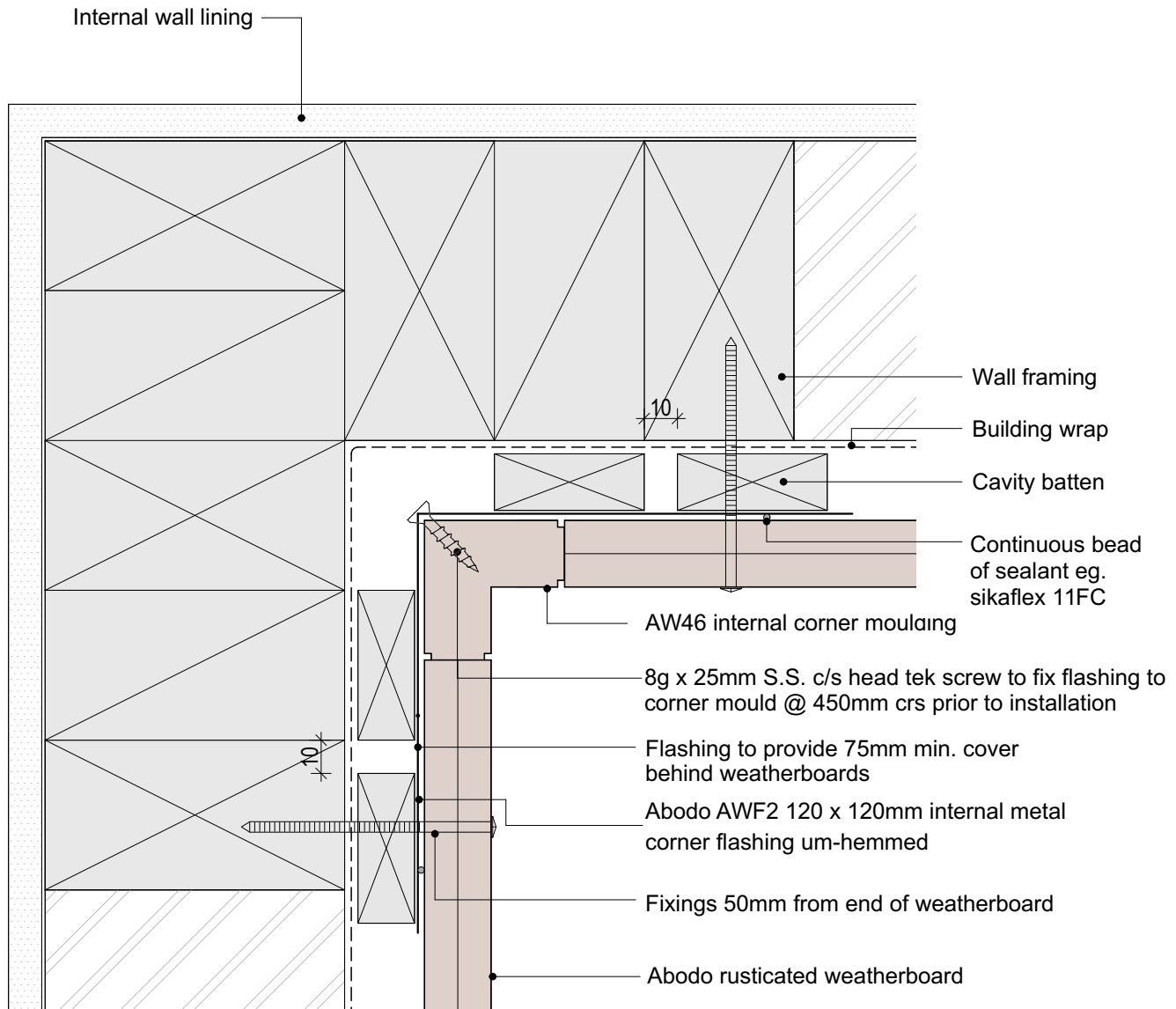
SHEET NUMBER

**R.C.9**

REVISION

**01**

1. Weatherboards must be coated with at least one coat all sides prior to fixing.
2. Fixing points must be pre-drilled minimum 1mm smaller than the fastener.
3. Cut ends and exposed timber must be sealed with an approved coating or end seal.



© Abodo Wood Ltd. 2020  
info@abodo.co.nz  
T +64 (9) 249 0100

SHEET TITLE

Internal 90° Corner - With AW46 Moulding

PROFILE

Rusticated Weatherboard

SCALE:

1:2 @ A4

PRINT DATE:

01/04/2020

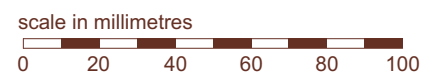
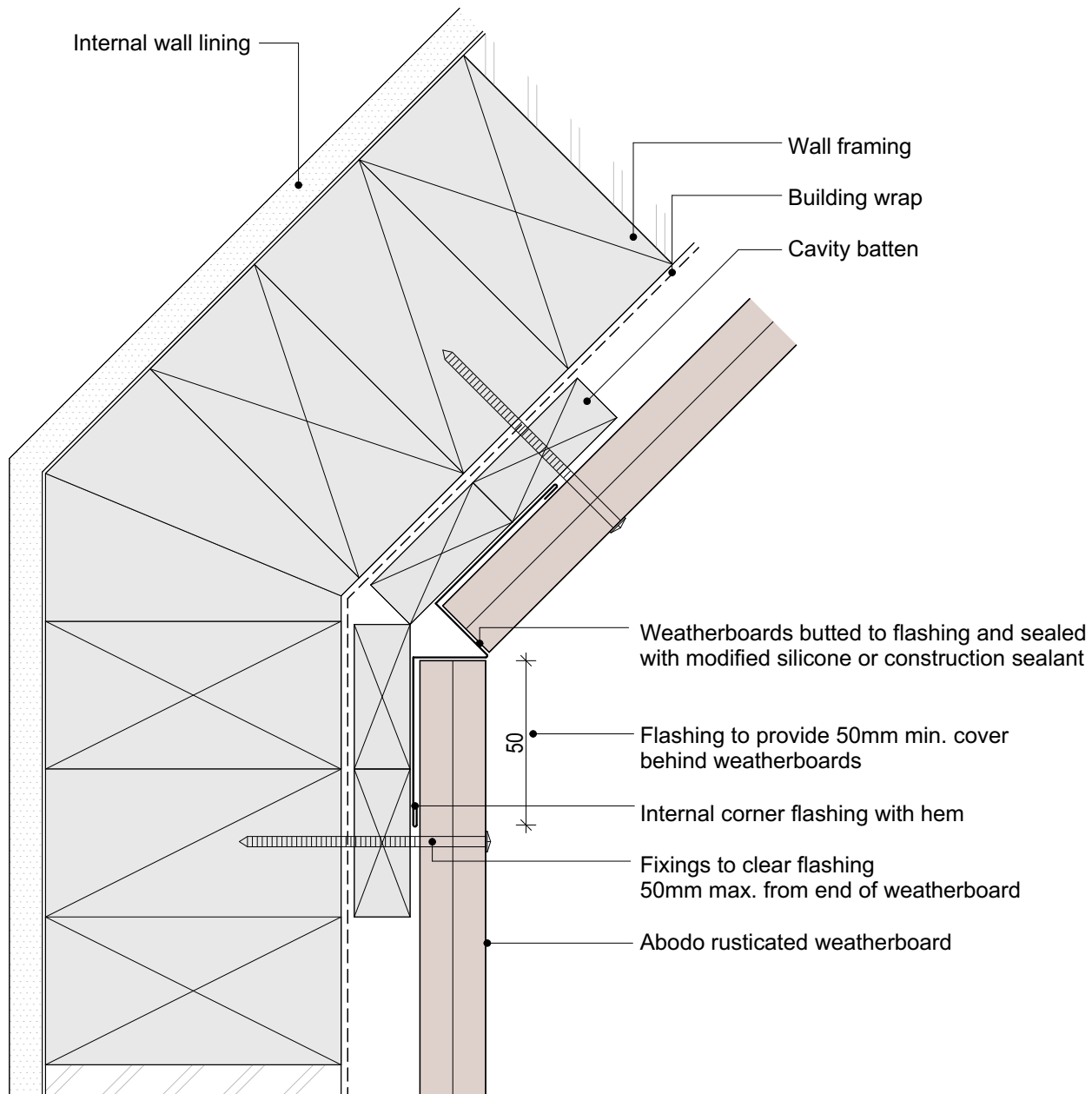
SHEET NUMBER

R.C.10

REVISION

01

1. Weatherboards must be coated with at least one coat all sides prior to fixing.
2. Fixing points must be pre-drilled minimum 1mm smaller than the fastener.
3. Cut ends and exposed timber must be sealed with an approved coating or end seal.



© Abodo Wood Ltd. 2020  
info@abodo.co.nz  
T +64 (9) 249 0100

SHEET TITLE

Internal 135° Corner - W Flashing

PROFILE

Rusticated Weatherboard

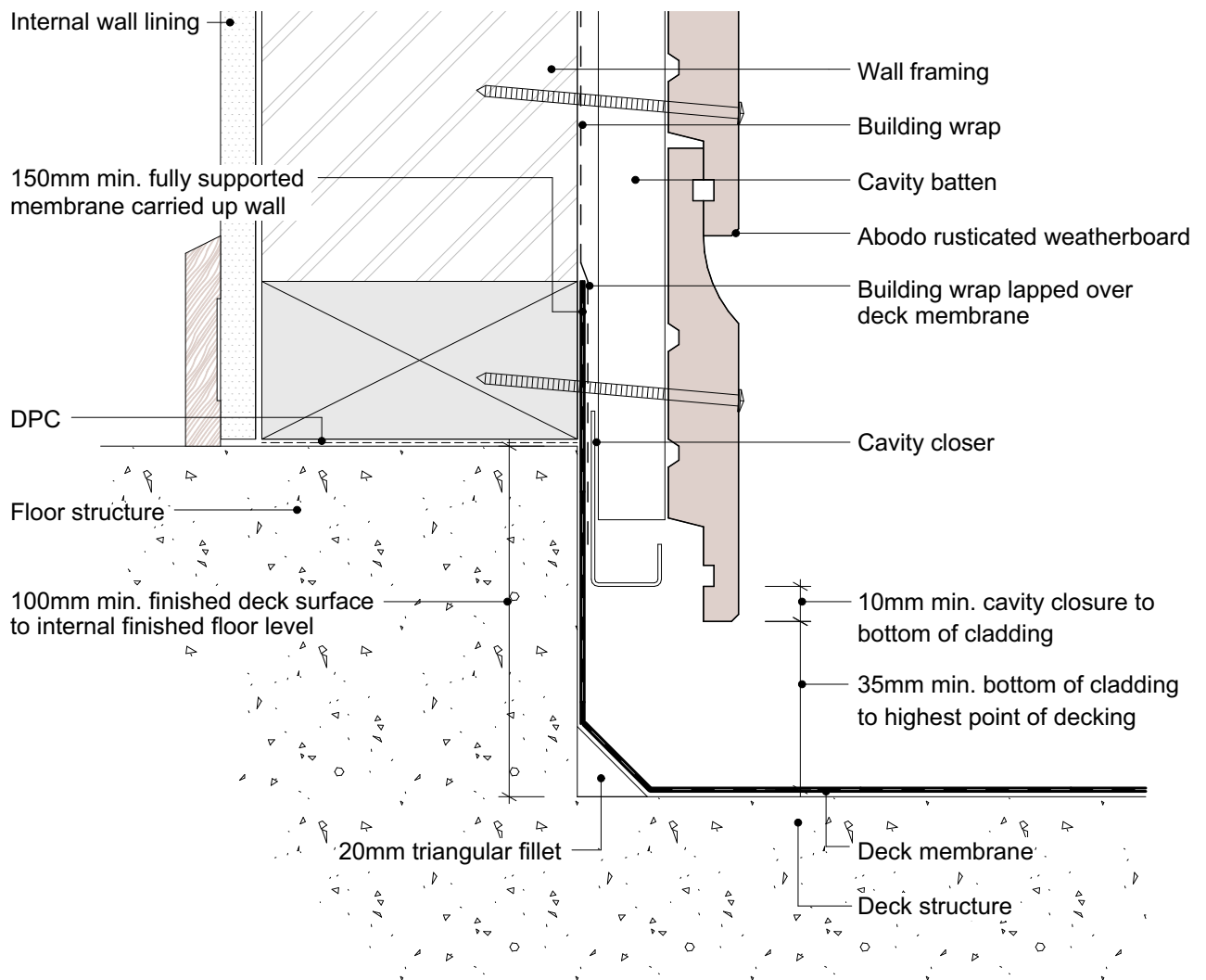
SCALE: 1:2 @ A4

PRINT DATE: 01/04/2020

SHEET NUMBER REVISION

R.C.11 01

1. Weatherboards must be coated with at least one coat all sides prior to fixing.
2. Fixing points must be pre-drilled minimum 1mm smaller than the fastener.
3. Cut ends and exposed timber must be sealed with an approved coating or end seal.



scale in millimetres

0 20 40 60 80 100



© Abodo Wood Ltd. 2020  
info@abodo.co.nz  
T +64 (9) 249 0100

SHEET TITLE

## Enclosed Deck - Concrete Substrate

PROFILE

Rusticated Weatherboard

SCALE:

1:2 @ A4

PRINT DATE:

01/04/2020

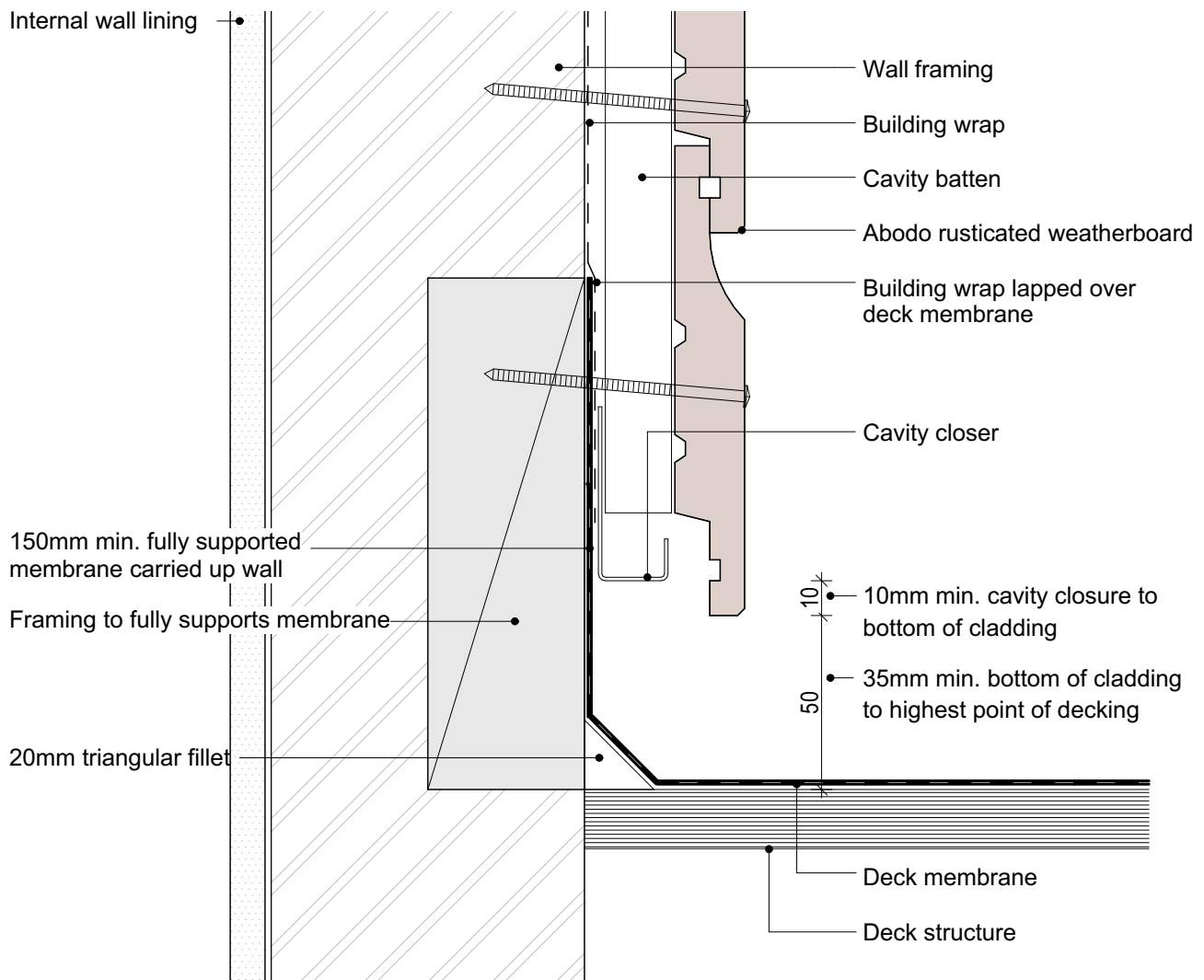
SHEET NUMBER

**R.C.12**

REVISION

**01**

1. Weatherboards must be coated with at least one coat all sides prior to fixing.
2. Fixing points must be pre-drilled minimum 1mm smaller than the fastener.
3. Cut ends and exposed timber must be sealed with an approved coating or end seal.



scale in millimetres

0 20 40 60 80 100



© Abodo Wood Ltd. 2020  
info@abodo.co.nz  
T +64 (9) 249 0100

SHEET TITLE

## Enclosed Deck - Timber Substrate

PROFILE

Rusticated Weatherboard

SCALE:

1:2 @ A4

PRINT DATE:

01/04/2020

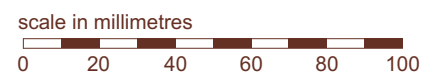
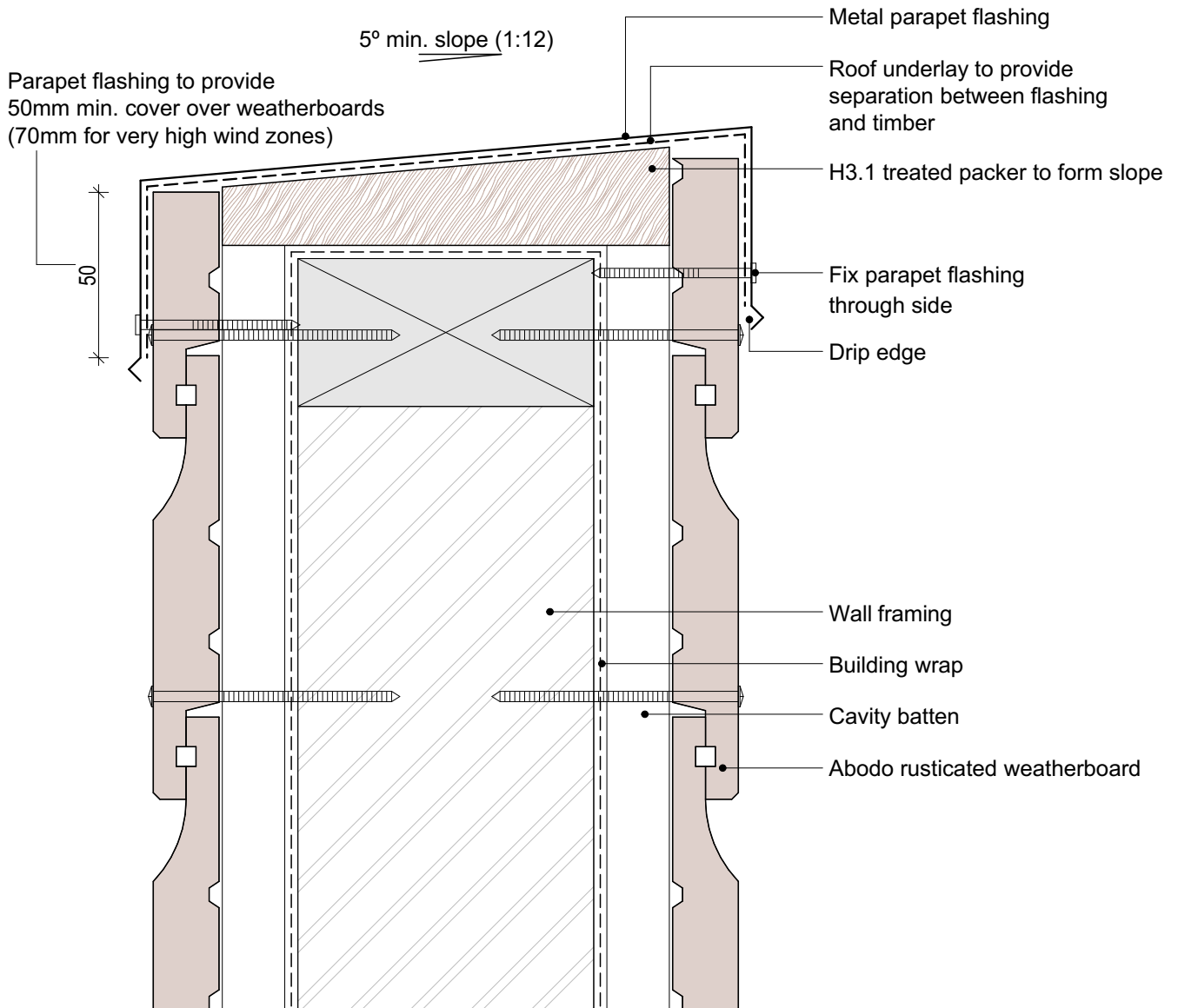
SHEET NUMBER

**R.C.13**

REVISION

**01**

1. Weatherboards must be coated with at least one coat all sides prior to fixing.
2. Fixing points must be pre-drilled minimum 1mm smaller than the fastener.
3. Cut ends and exposed timber must be sealed with an approved coating or end seal.



© Abodo Wood Ltd. 2020  
info@abodo.co.nz  
T +64 (9) 249 0100

SHEET TITLE

## Parapet Balustrade Cap Flashing

PROFILE

Rusticated Weatherboard

SCALE:

1:2 @ A4

PRINT DATE:

01/04/2020

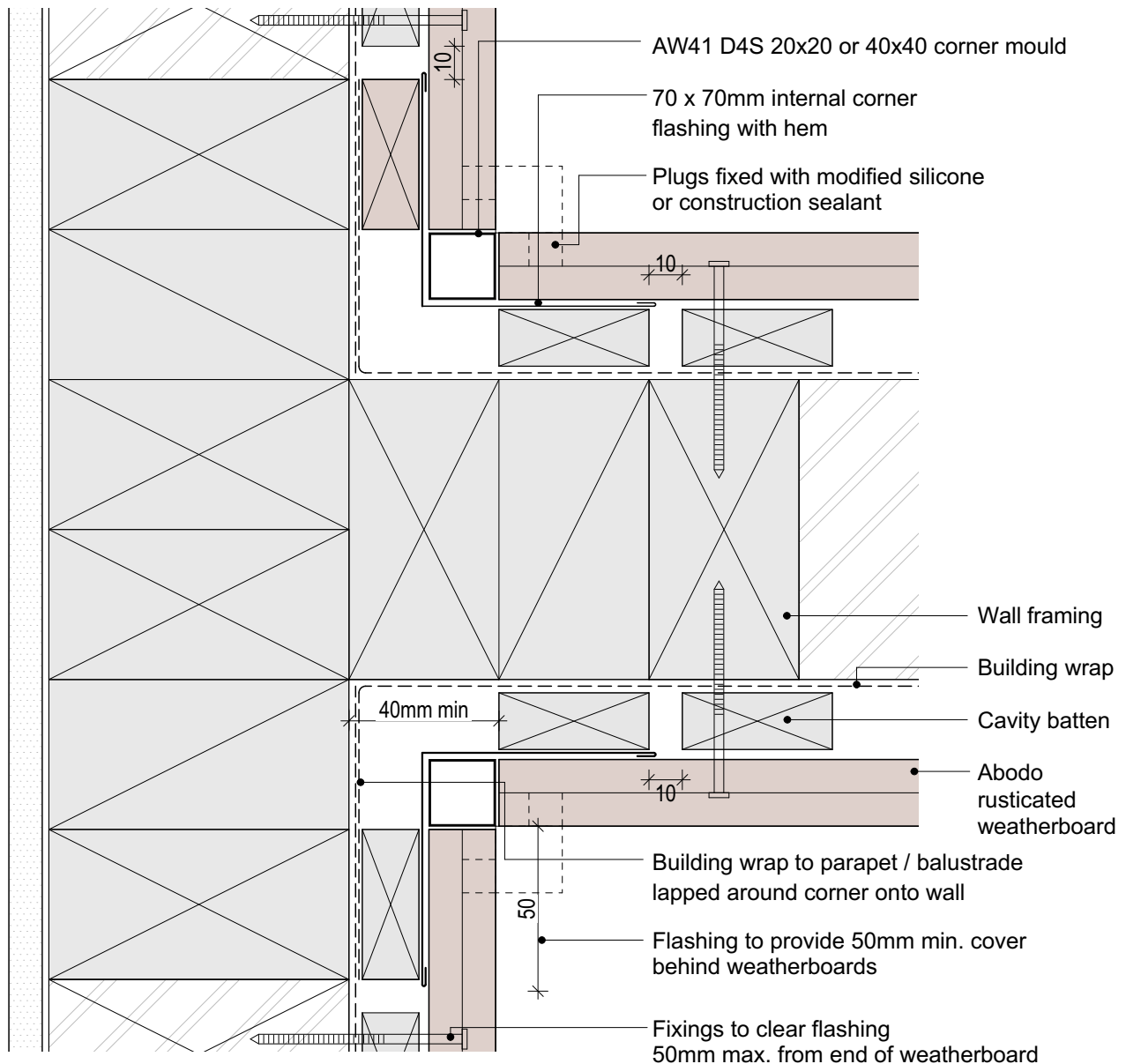
SHEET NUMBER

R.C.14

REVISION

01

1. Weatherboards must be coated with at least one coat all sides prior to fixing.
2. Fixing points must be pre-drilled minimum 1mm smaller than the fastener.
3. Cut ends and exposed timber must be sealed with an approved coating or end seal.



**ABODO**

scale in millimetres  
0 20 40 60 80 100



© Abodo Wood Ltd. 2020  
info@abodo.co.nz  
T +64 (9) 249 0100

SHEET TITLE

## Parapet Balustrade Intersection With Wall - Butted

PROFILE

Rusticated Weatherboard

SCALE: 1:2 @ A4

PRINT DATE: 01/04/2020

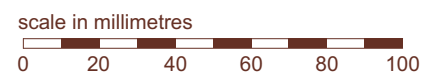
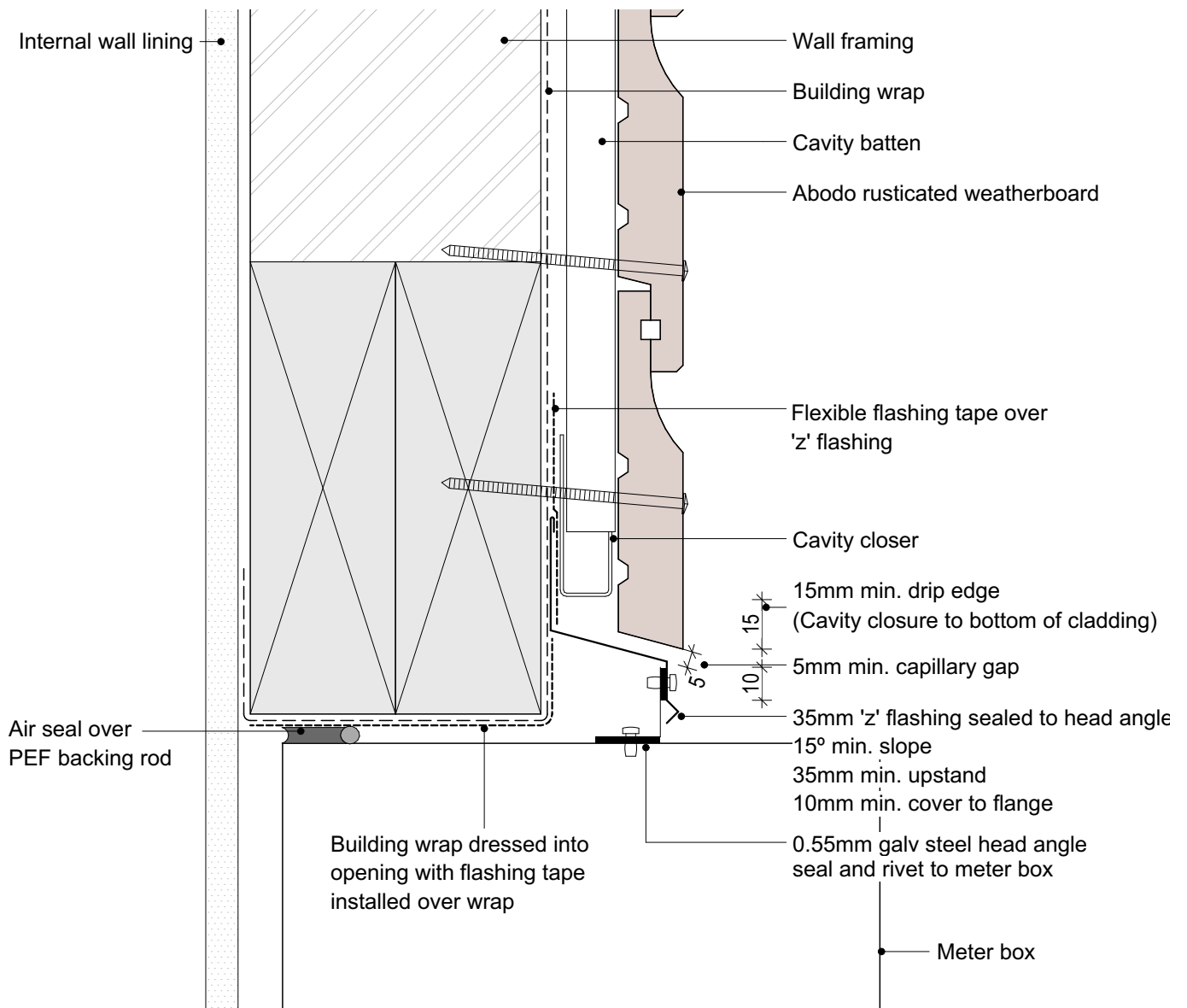
SHEET NUMBER REVISION

**R.C.15 01**

Abodo Wood Ltd.  
62 Ascot Road, Mangere,  
Auckland 2022, New Zealand



1. Weatherboards must be coated with at least one coat all sides prior to fixing.
2. Fixing points must be pre-drilled minimum 1mm smaller than the fastener.
3. Cut ends and exposed timber must be sealed with an approved coating or end seal.



© Abodo Wood Ltd. 2020  
info@abodo.co.nz  
T +64 (9) 249 0100

SHEET TITLE

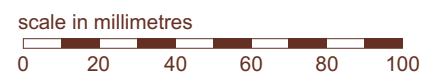
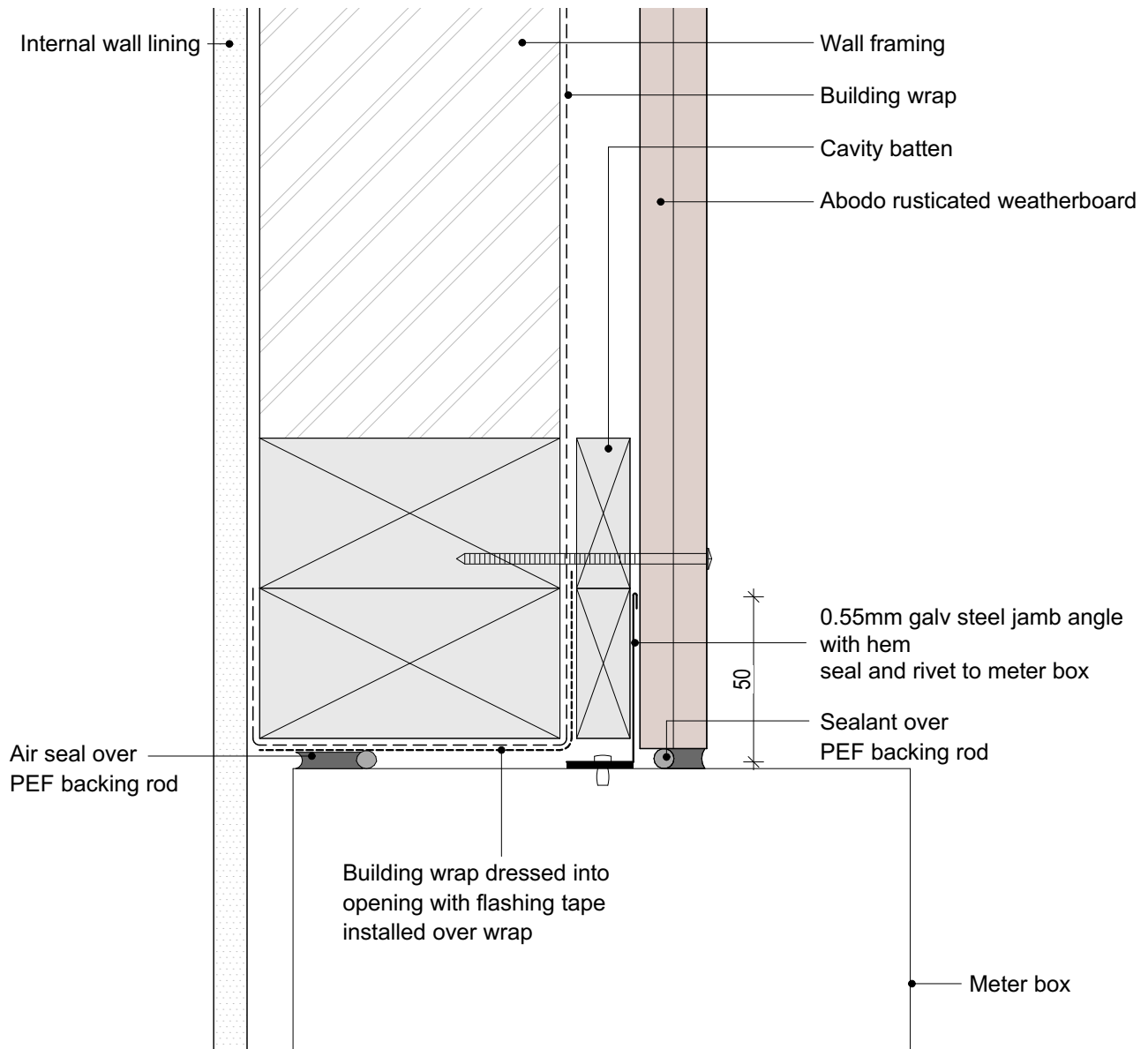
## Meter Box Head

PROFILE  
Rusticated Weatherboard

SCALE:  
1:2 @ A4  
PRINT DATE: 01/04/2020

SHEET NUMBER  
**R.C.16**  
REVISION  
**01**

1. Weatherboards must be coated with at least one coat all sides prior to fixing.
2. Fixing points must be pre-drilled minimum 1mm smaller than the fastener.
3. Cut ends and exposed timber must be sealed with an approved coating or end seal.



© Abodo Wood Ltd. 2020  
info@abodo.co.nz  
T +64 (9) 249 0100

SHEET TITLE

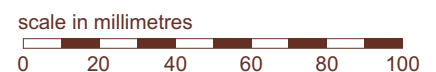
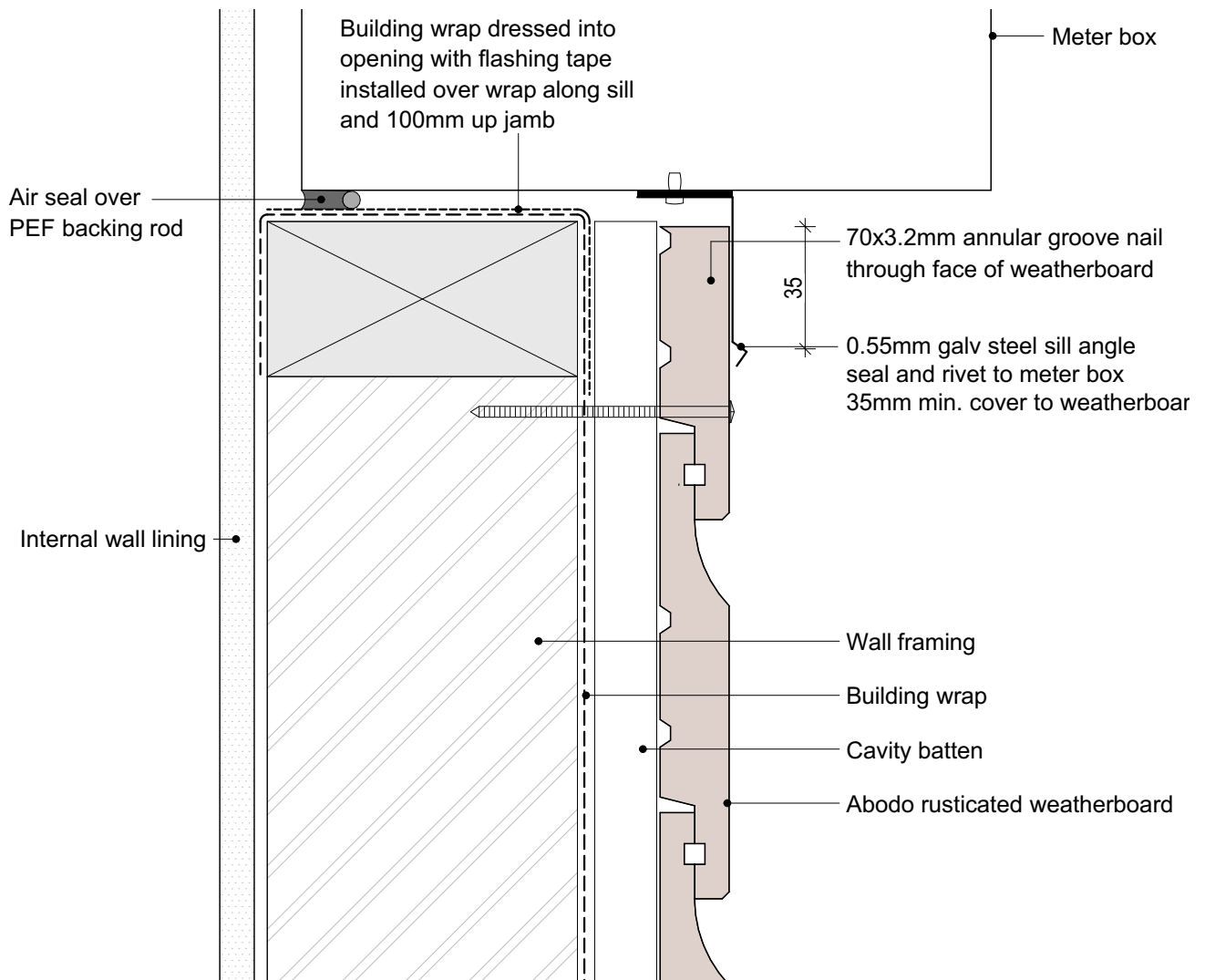
## Meter Box Jamb

PROFILE  
Rusticated Weatherboard

SCALE:  
1:2 @ A4  
PRINT DATE: 01/04/2020

SHEET NUMBER  
**R.C.17**  
REVISION  
**01**

1. Weatherboards must be coated with at least one coat all sides prior to fixing.
2. Fixing points must be pre-drilled minimum 1mm smaller than the fastener.
3. Cut ends and exposed timber must be sealed with an approved coating or end seal.



© Abodo Wood Ltd. 2020  
info@abodo.co.nz  
T +64 (9) 249 0100

SHEET TITLE

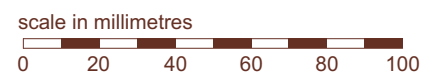
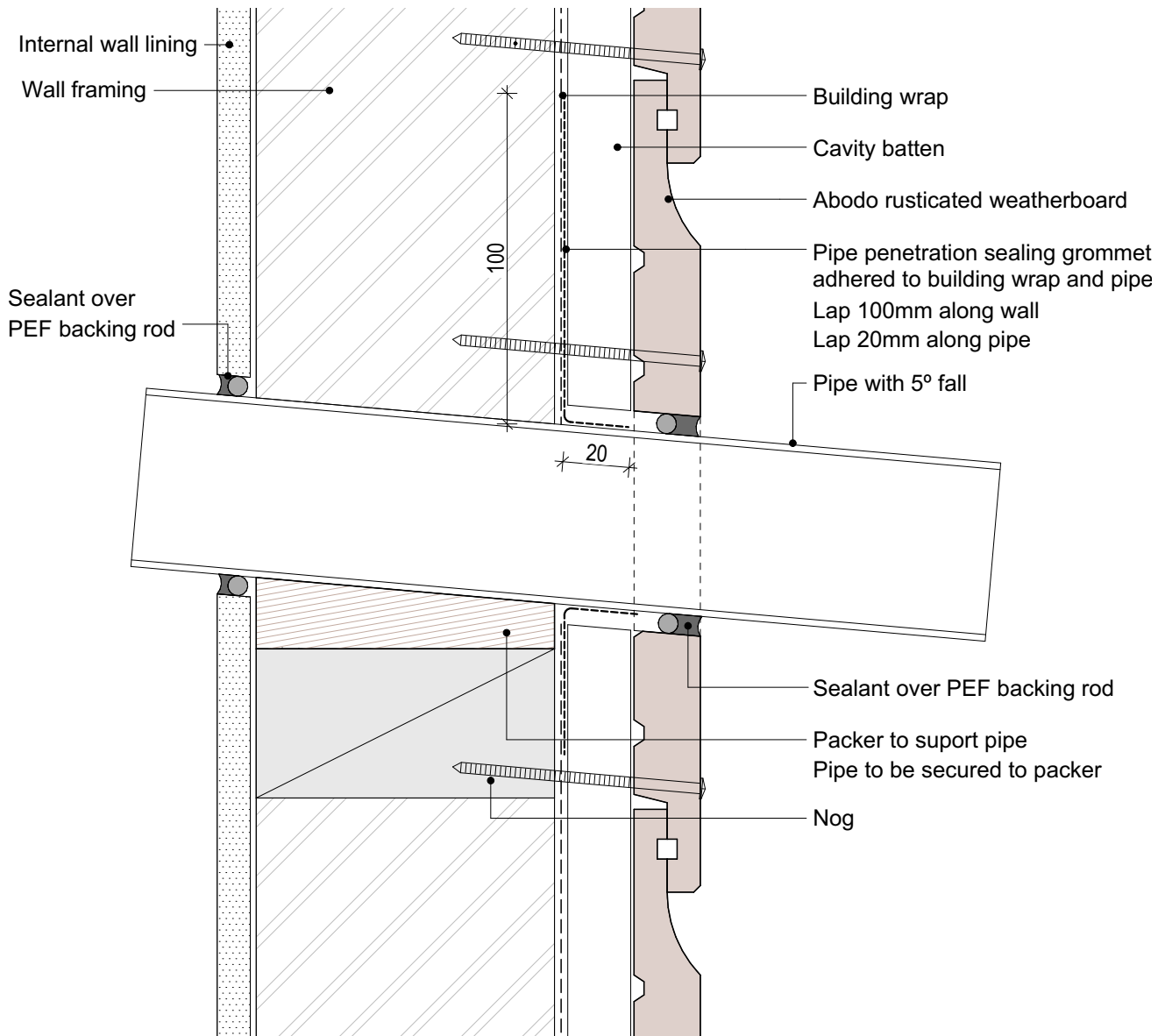
## Meter Box Sill

PROFILE  
Rusticated Weatherboard

SCALE:  
1:2 @ A4  
PRINT  
DATE: 01/04/2020

SHEET NUMBER  
**R.C.18**  
REVISION  
**01**

1. Weatherboards must be coated with at least one coat all sides prior to fixing.
2. Fixing points must be pre-drilled minimum 1mm smaller than the fastener.
3. Cut ends and exposed timber must be sealed with an approved coating or end seal.



© Abodo Wood Ltd. 2020  
info@abodo.co.nz  
T +64 (9) 249 0100

SHEET TITLE

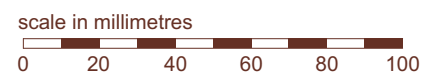
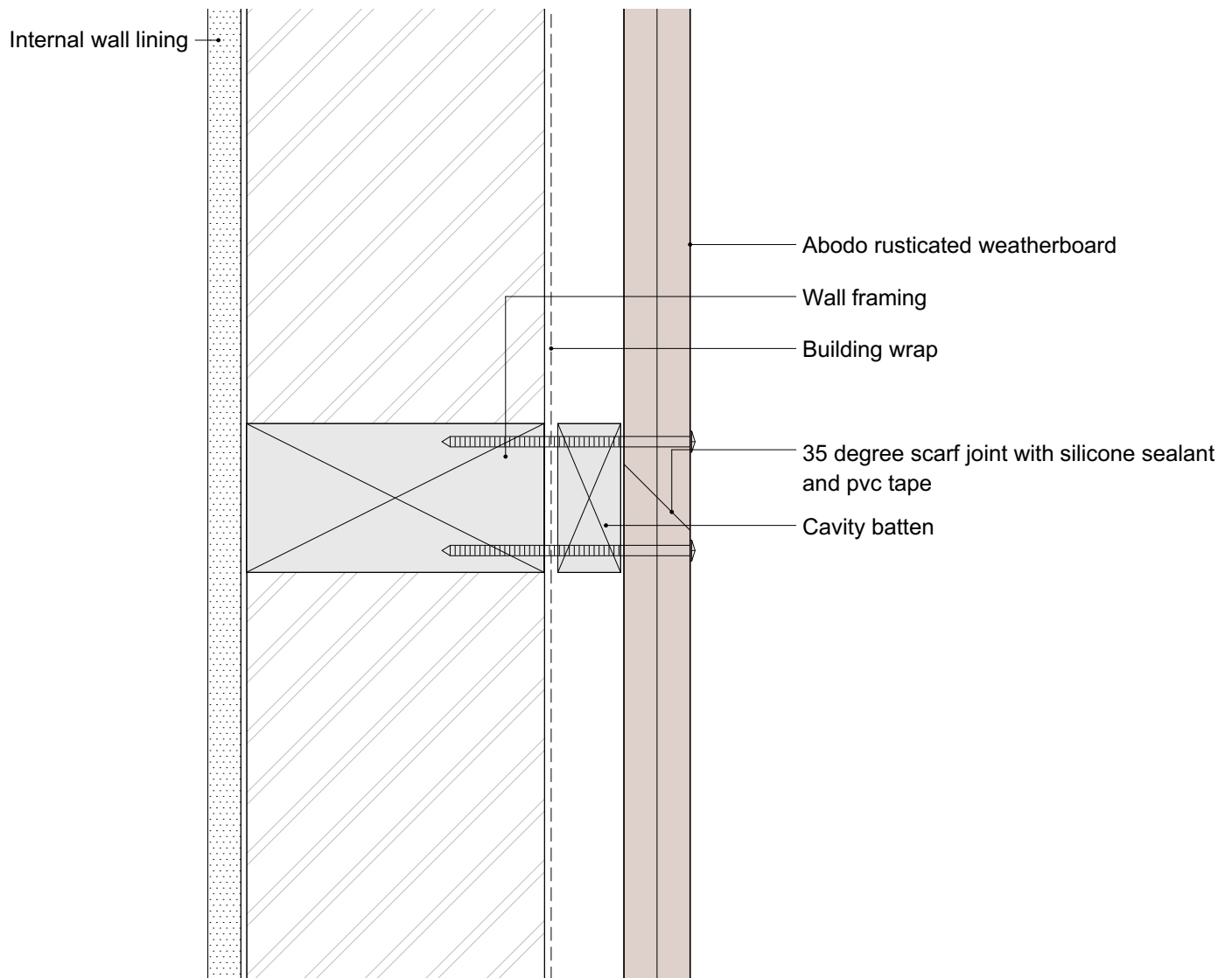
## Pipe Penetration

PROFILE  
Rusticated Weatherboard

SCALE:  
1:2 @ A4  
PRINT DATE: 01/04/2020

SHEET NUMBER  
**R.C.19**  
REVISION  
**01**

1. Weatherboards must be coated with at least one coat all sides prior to fixing.
2. Fixing points must be pre-drilled minimum 1mm smaller than the fastener.
3. Cut ends and exposed timber must be sealed with an approved coating or end seal.



© Abodo Wood Ltd. 2020  
info@abodo.co.nz  
T +64 (9) 249 0100

SHEET TITLE

Weatherboard Fix - Birdseye

PROFILE

Rusticated Weatherboard

SCALE: 1:2 @ A4

PRINT DATE: 01/04/2020

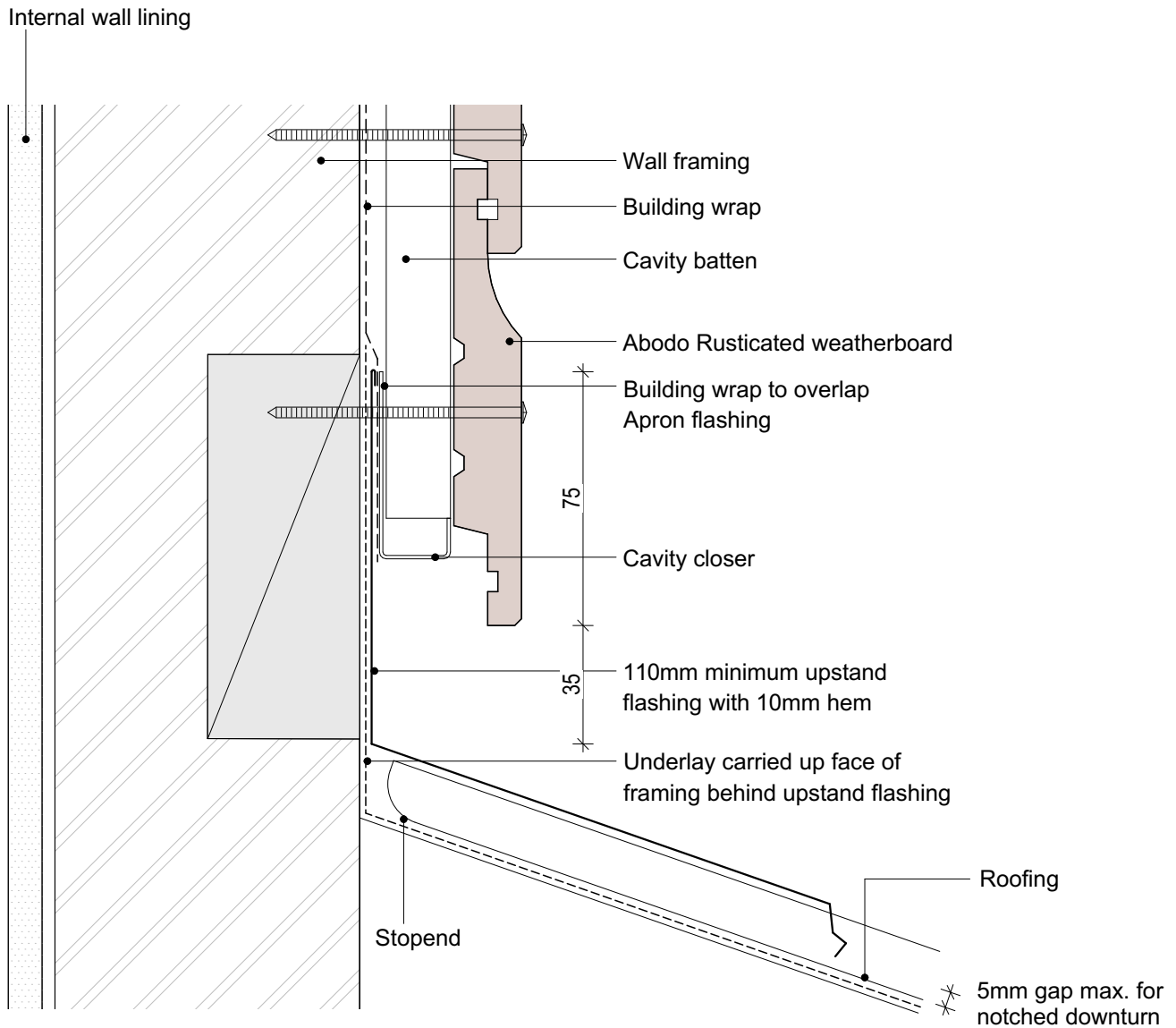
SHEET NUMBER

**R.C.20**

REVISION

**01**

1. Weatherboards must be coated with at least one coat all sides prior to fixing.
2. Fixing points must be pre-drilled minimum 1mm smaller than the fastener.
3. Cut ends and exposed timber must be sealed with an approved coating or end seal.



© Abodo Wood Ltd. 2020  
info@abodo.co.nz  
T +64 (9) 249 0100

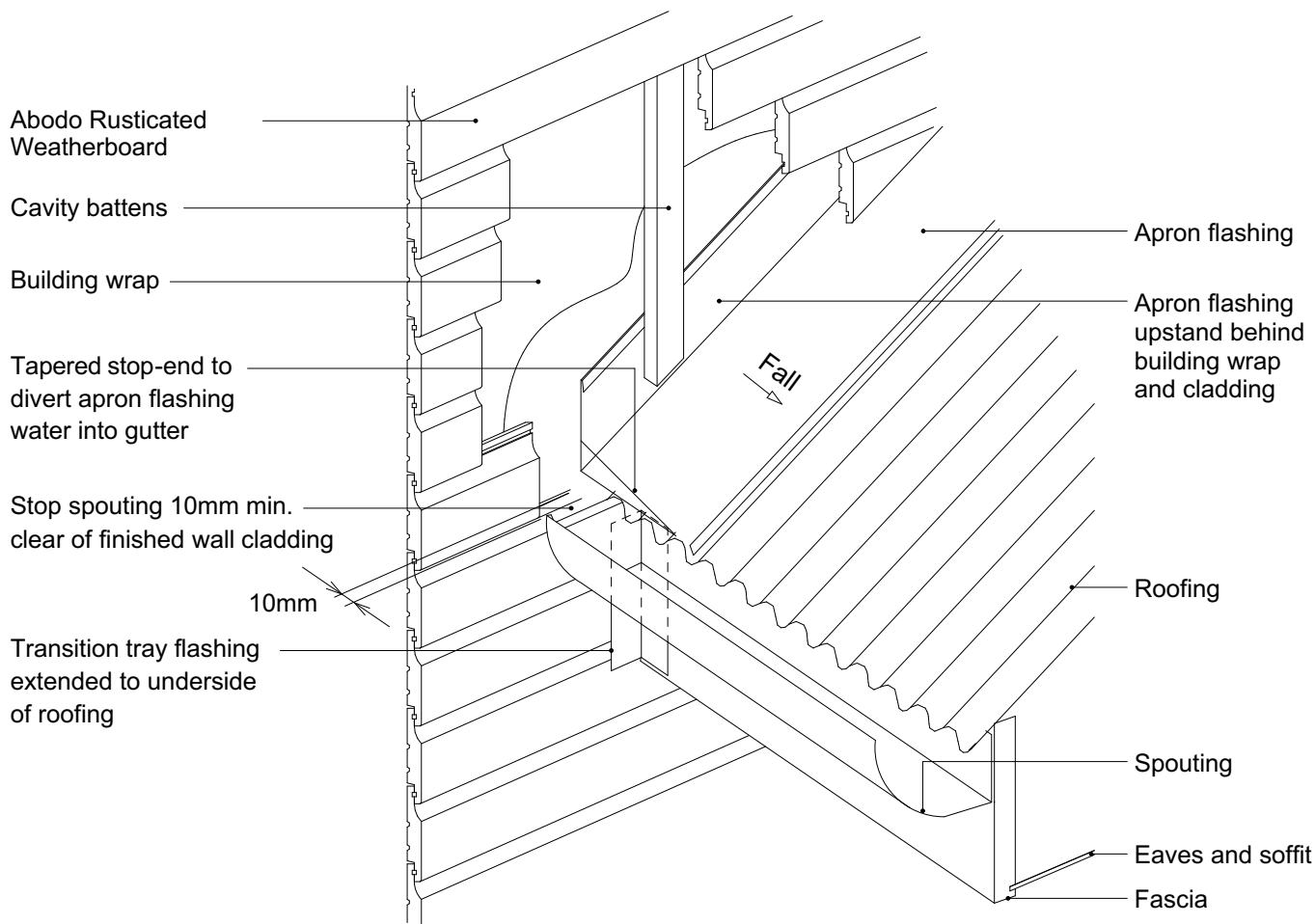
SHEET TITLE

Apron Flahing

PROFILE  
Rusticated Weatherboard

SCALE:  
1:2 @ A4  
PRINT DATE: 01/04/2020

SHEET NUMBER REVISION  
**R.C.21** **01**



© Abodo Wood Ltd. 2020  
info@abodo.co.nz  
T +64 (9) 249 0100

SHEET TITLE

Roof Kick-out Flashing Cavity

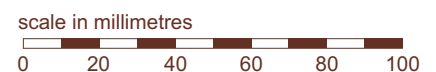
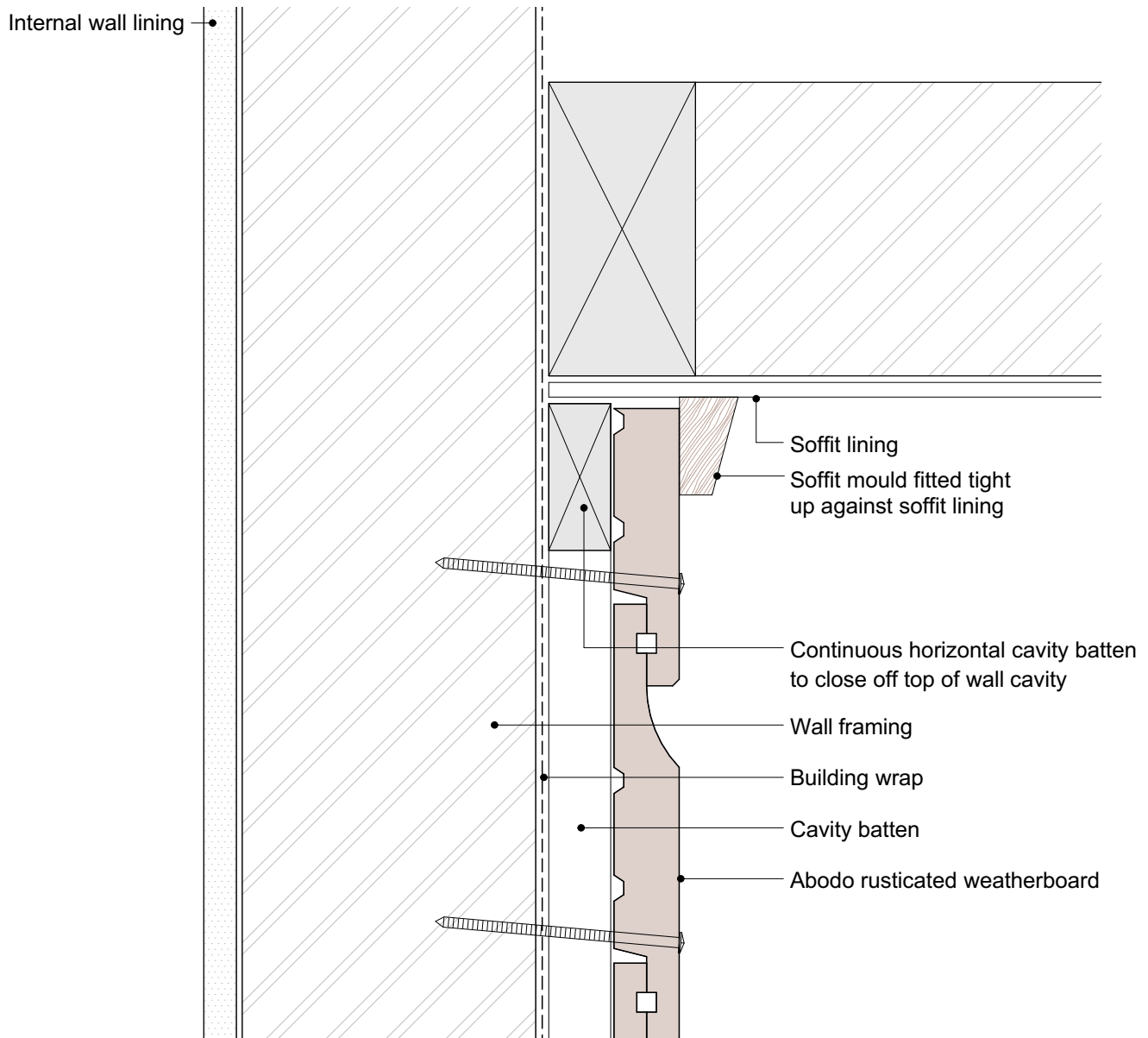
PROFILE

Rusticated Weatherboard

SCALE: NTS @ A4  
PRINT DATE: 01/04/2020

SHEET NUMBER REVISION  
**R.C.22 01**

1. Weatherboards must be coated with at least one coat all sides prior to fixing.
2. Fixing points must be pre-drilled minimum 1mm smaller than the fastener.
3. Cut ends and exposed timber must be sealed with an approved coating or end seal.



© Abodo Wood Ltd. 2020  
info@abodo.co.nz  
T +64 (9) 249 0100

SHEET TITLE

Top Of Wall - Flat Soffit

PROFILE

Rusticated Weatherboard

SCALE:

1:2 @ A4

PRINT  
DATE:

01/04/2020

SHEET NUMBER

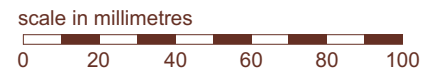
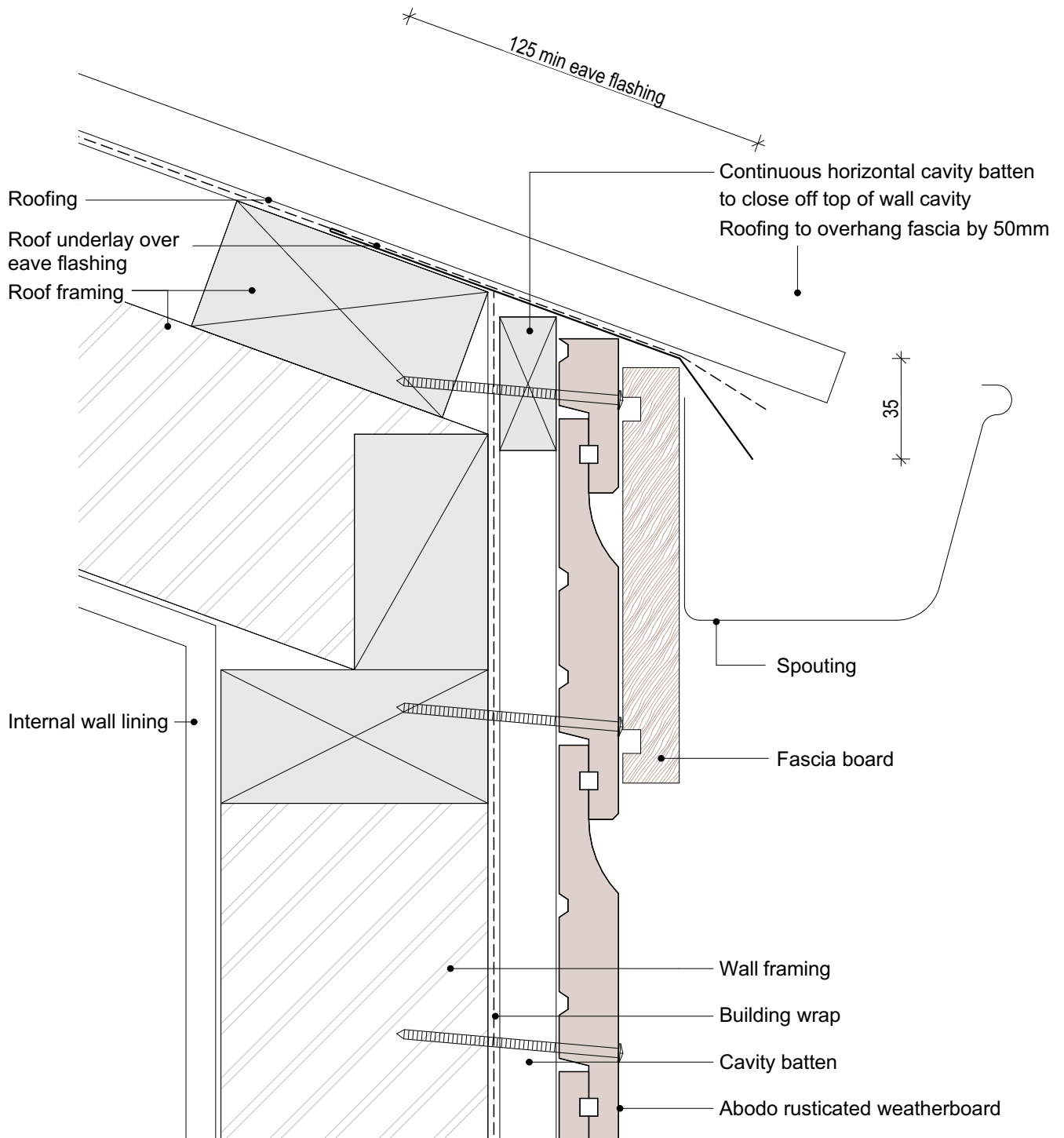
**R.C.23**

REVISION

**01**



1. Weatherboards must be coated with at least one coat all sides prior to fixing.
2. Fixing points must be pre-drilled minimum 1mm smaller than the fastener.
3. Cut ends and exposed timber must be sealed with an approved coating or end seal.



© Abodo Wood Ltd. 2020  
info@abodo.co.nz  
T +64 (9) 249 0100

SHEET TITLE

Top Of Wall - No Soffit

PROFILE

Rusticated Weatherboard

SCALE: 1:2 @ A4

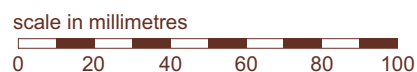
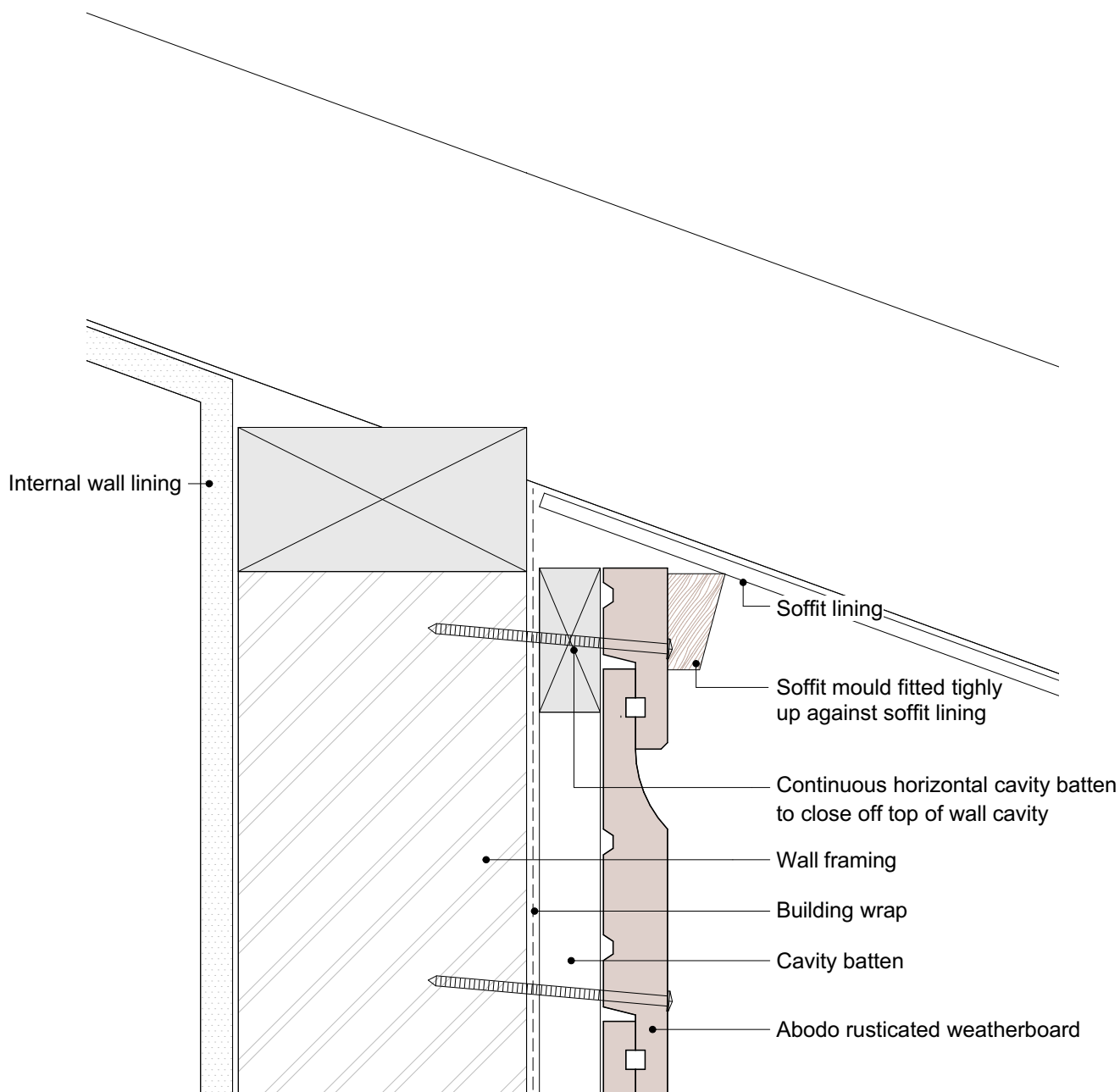
PRINT DATE: 01/04/2020

SHEET NUMBER REVISION

R.C.24 01

Abodo Wood Ltd.  
62 Ascot Road, Mangere,  
Auckland 2022, New Zealand

1. Weatherboards must be coated with at least one coat all sides prior to fixing.
2. Fixing points must be pre-drilled minimum 1mm smaller than the fastener.
3. Cut ends and exposed timber must be sealed with an approved coating or end seal.



© Abodo Wood Ltd. 2020  
info@abodo.co.nz  
T +64 (9) 249 0100

SHEET TITLE

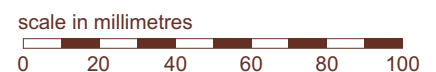
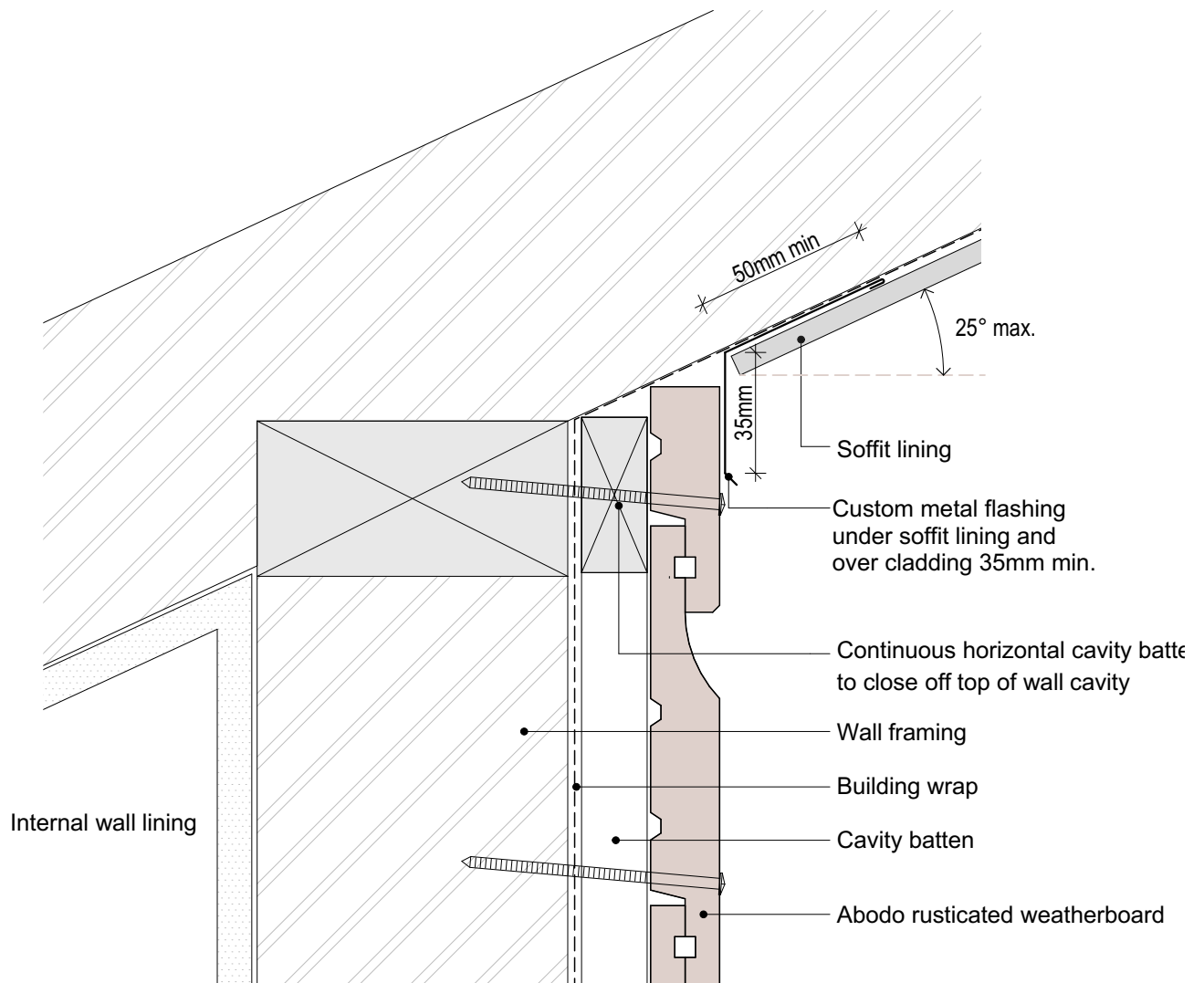
Top Of Wall - Slopping Soffit

PROFILE  
Rusticated Weatherboard

SCALE:  
1:2 @ A4  
PRINT  
DATE: 01/04/2020

SHEET NUMBER  
**R.C.25**  
REVISION  
**01**

1. Weatherboards must be coated with at least one coat all sides prior to fixing.
2. Fixing points must be pre-drilled minimum 1mm smaller than the fastener.
3. Cut ends and exposed timber must be sealed with an approved coating or end seal.



© Abodo Wood Ltd. 2020  
info@abodo.co.nz  
T +64 (9) 249 0100

SHEET TITLE

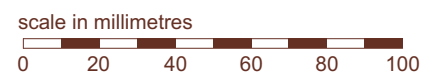
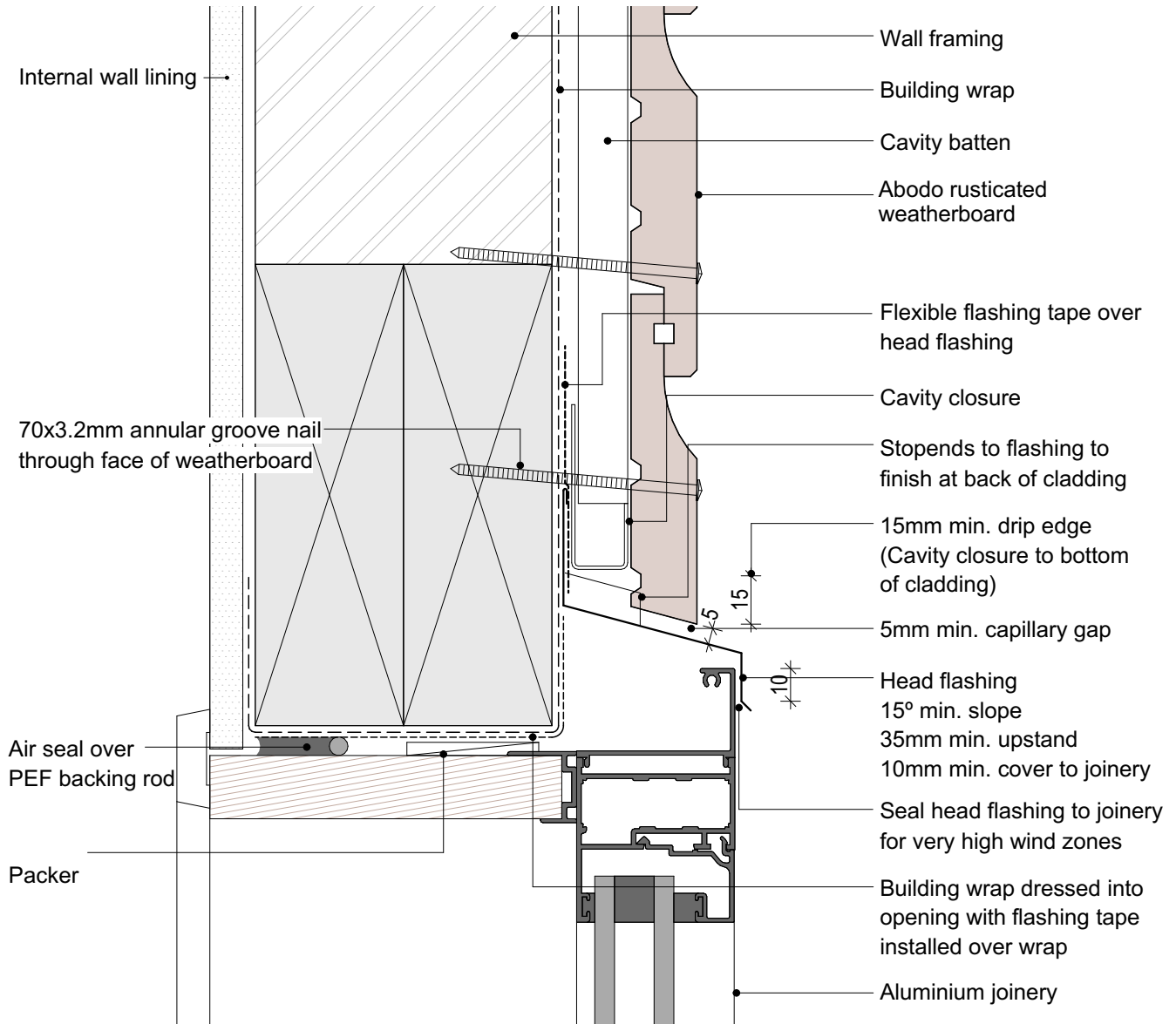
## Top Of Wall - Raking Soffit

PROFILE  
Rusticated Weatherboard

SCALE:  
1:2 @ A4  
PRINT  
DATE: 01/04/2020

SHEET NUMBER  
**R.C.26**  
REVISION  
**01**

1. Weatherboards must be coated with at least one coat all sides prior to fixing.
2. Fixing points must be pre-drilled minimum 1mm smaller than the fastener.
3. Cut ends and exposed timber must be sealed with an approved coating or end seal.



© Abodo Wood Ltd. 2020  
info@abodo.co.nz  
T +64 (9) 249 0100

SHEET TITLE

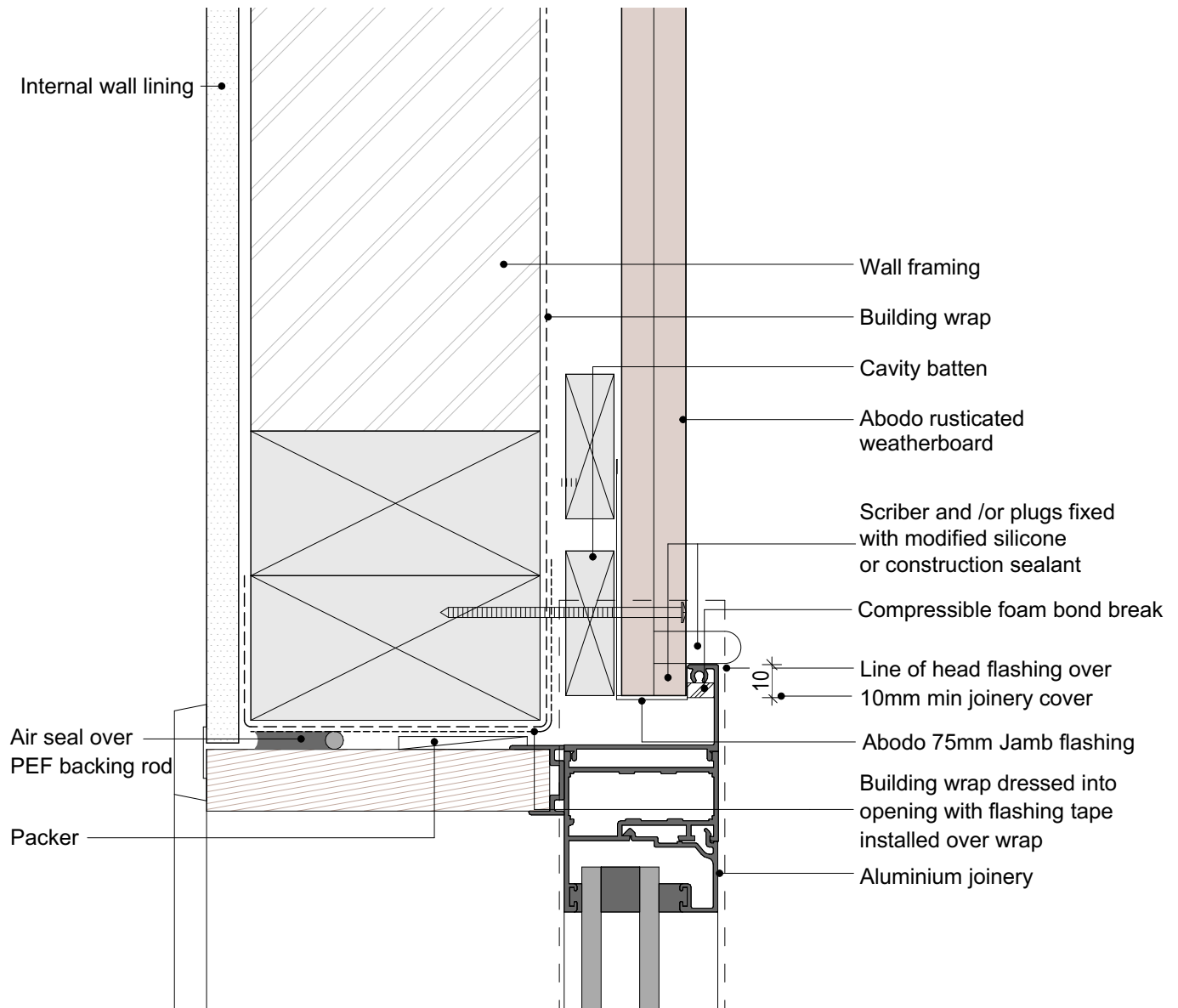
## Window Head

PROFILE  
Rusticated Weatherboard

SCALE:  
1:2 @ A4  
PRINT DATE: 01/04/2020

SHEET NUMBER  
**R.C.27**  
REVISION  
**01**

1. Weatherboards must be coated with at least one coat all sides prior to fixing.
2. Fixing points must be pre-drilled minimum 1mm smaller than the fastener.
3. Cut ends and exposed timber must be sealed with an approved coating or end seal.



scale in millimetres

0 20 40 60 80 100



© Abodo Wood Ltd. 2020  
info@abodo.co.nz  
T +64 (9) 249 0100

SHEET TITLE

Window Jamb

PROFILE

Rusticated Weatherboard

SCALE:

1:2 @ A4

PRINT DATE:

01/04/2020

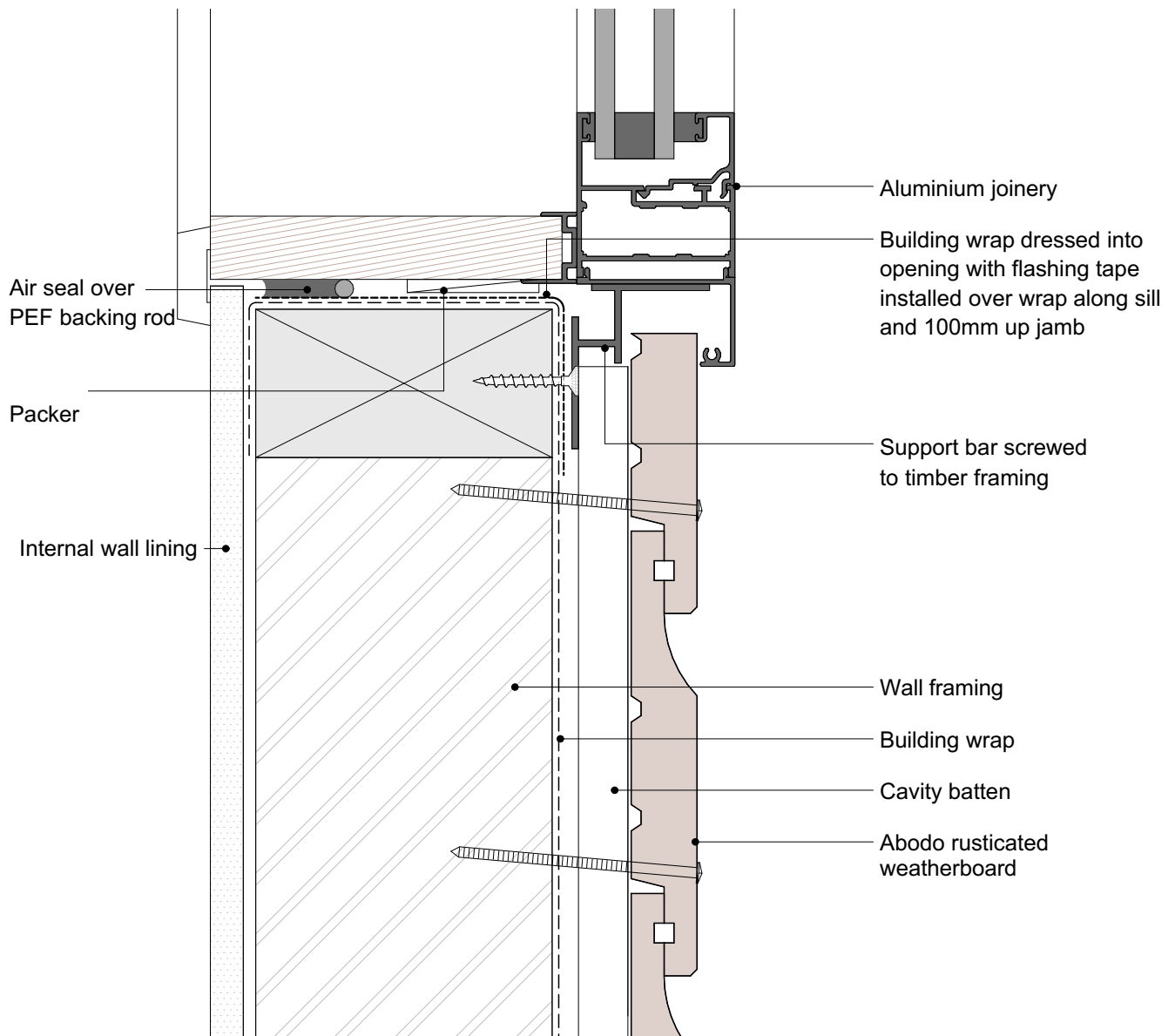
SHEET NUMBER

R.C.28

REVISION

01

1. Weatherboards must be coated with at least one coat all sides prior to fixing.
2. Fixing points must be pre-drilled minimum 1mm smaller than the fastener.
3. Cut ends and exposed timber must be sealed with an approved coating or end seal.



© Abodo Wood Ltd. 2020  
info@abodo.co.nz  
T +64 (9) 249 0100

SHEET TITLE

Window Sill

PROFILE

Rusticated Weatherboard

SCALE:

1:2 @ A4

PRINT  
DATE:

01/04/2020

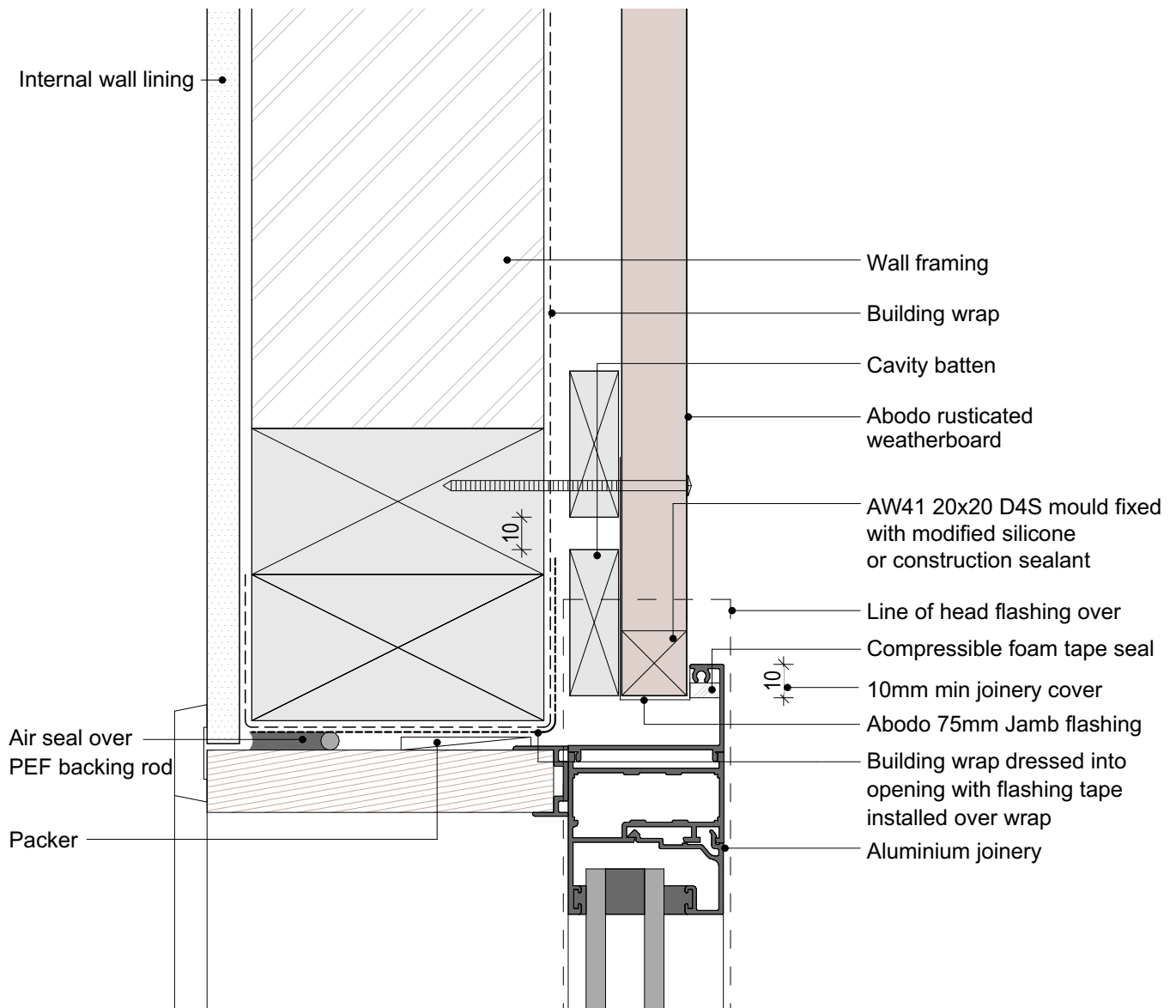
SHEET NUMBER

R.C.29

REVISION

01

1. Weatherboards must be coated with at least one coat all sides prior to fixing.
2. Fixing points must be pre-drilled minimum 1mm smaller than the fastener.
3. Cut ends and exposed timber must be sealed with an approved coating or end seal.



scale in millimetres

0 20 40 60 80 100



© Abodo Wood Ltd. 2020  
info@abodo.co.nz  
T +64 (9) 249 0100

SHEET TITLE

Window Jamb - Option 2

PROFILE

Rusticated Weatherboard

SCALE:

1:2 @ A4

PRINT DATE:

01/04/2020

SHEET NUMBER

R.C.30

REVISION

01