

# Vertical Shiplap Weatherboard

## Sheet Index

Sheet No: Revision: Sheet Name:

V.C.1	02	Horizontal 20x45 Cavity Batten Fix
V.C.2	01	Horizontal 45x45 Cavity Batten Fix
V.C.3	01	Base of wall - concrete floor
V.C.4	01	Base of wall - Timber floor
V.C.5	01	Inter-Storey Cavity Junction
V.C.6	02	Packer Cavity Batten - Painted
V.C.7	02	Packer Cavity Batten Stained
V.C.8	02	Structural 45x45 Cavity Batten - Stained
V.C.9	01	External 90° Corner - Boxed
V.C.10	02	External 90° Corner - Soaker
V.C.11	02	External 90° Corner - Rebated
V.C.12	02	External 135° Corner - Soaker
V.C.13	02	Internal 135° Corner - W Flashing
V.C.14	01	Internal 90° Corner- Scribed & Notched
V.C.15	01	Internal 90° Corner - W Flashing
V.C.16	02	Enclosed Deck - Concrete Substrate
V.C.17	01	Enclosed Deck - Timber Substrate
V.C.18	01	Parapet Balustrade Cap Flashing
V.C.19	01	Parapet Balustrade Intersection With Wall - Butted
V.C.20	01	Meter Box Head
V.C.21	01	Meter Box Jamb
V.C.22	01	Meter Box Sill
V.C.23	01	Pipe Penetration
V.C.24	01	Weatherboard Fix - Birdseye
V.C.25	01	Apron Flahing
V.C.26	01	Roof Kick-out Flashing Cavity
V.C.27	01	Top Of Wall - Flat Soffit
V.C.28	01	Top Of Wall - No Soffit
V.C.29	01	Top Of Wall - Slopping Soffit
V.C.30	01	Top Of Wall- Raking Soffit
V.C.31	01	Soffit
V.C.32	01	Alternative Soffit 01
V.C.33	01	Alternative Soffit 02
V.C.34	01	Window Head
V.C.35	01	Window Jamb
V.C.36	01	Window Sill



© Abodo Wood Ltd. 2020

info@abodo.co.nz  
T +64 (9) 249 0100

Abodo Wood Ltd.  
62 Ascot Road, Mangere,  
Auckland 2022, New Zealand

SHEET TITLE

## DETAIL INDEX

PROFILE

Vertical Shiplap Weatherboard

SCALE:

NTS @ A4

PRINT  
DATE:

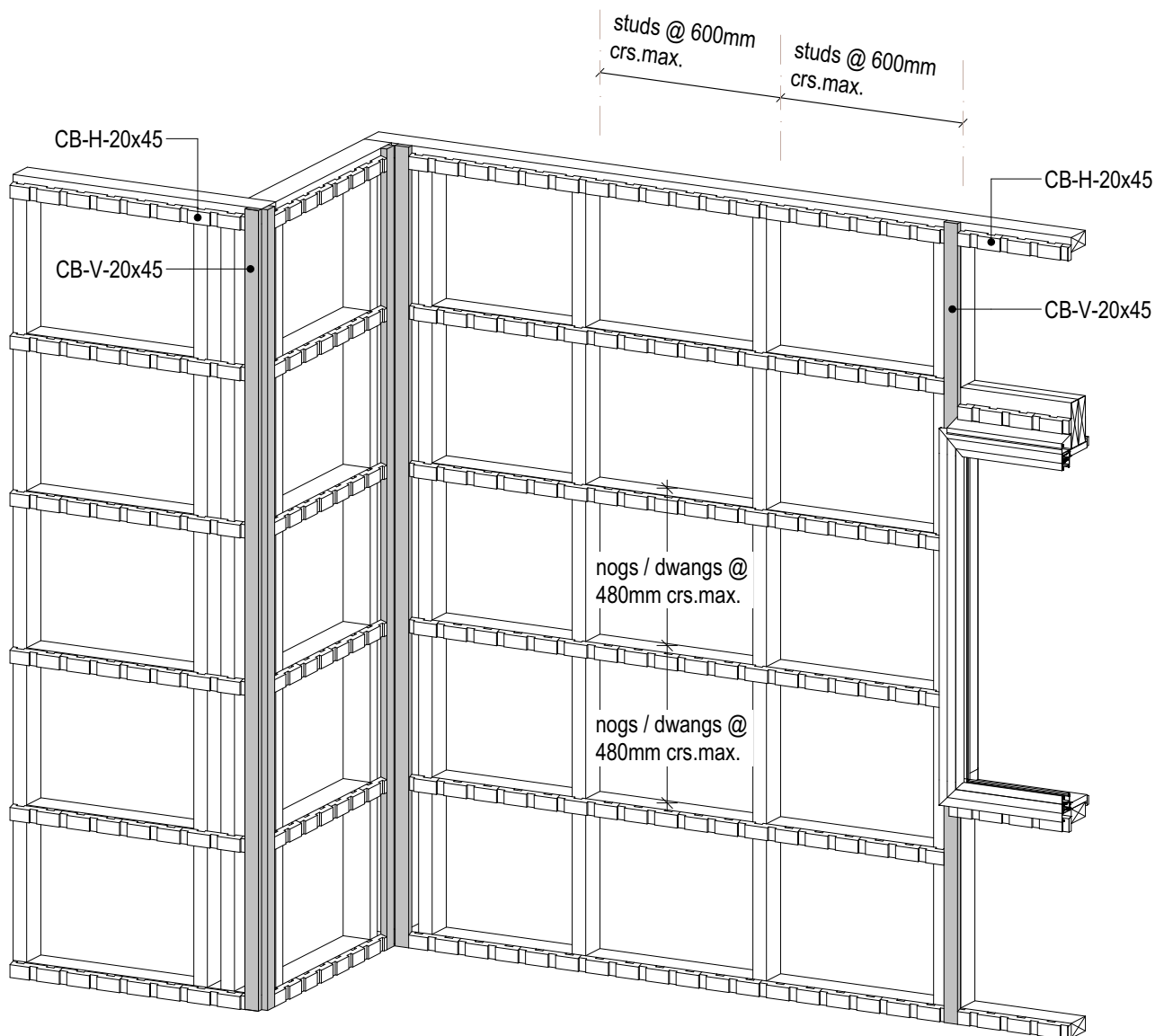
31/05/2021

SHEET NUMBER

**V.C**

REVISION

**01**



© Abodo Wood Ltd. 2020

info@abodo.co.nz  
T +64 (9) 249 0100

Abodo Wood Ltd.  
62 Ascot Road, Mangere,  
Auckland 2022, New Zealand

SHEET TITLE

## Horizontal 20x45 Cavity Batten Fix

PROFILE

Vertical Shiplap Weatherboard

SCALE:

NTS @ A4

PRINT  
DATE:

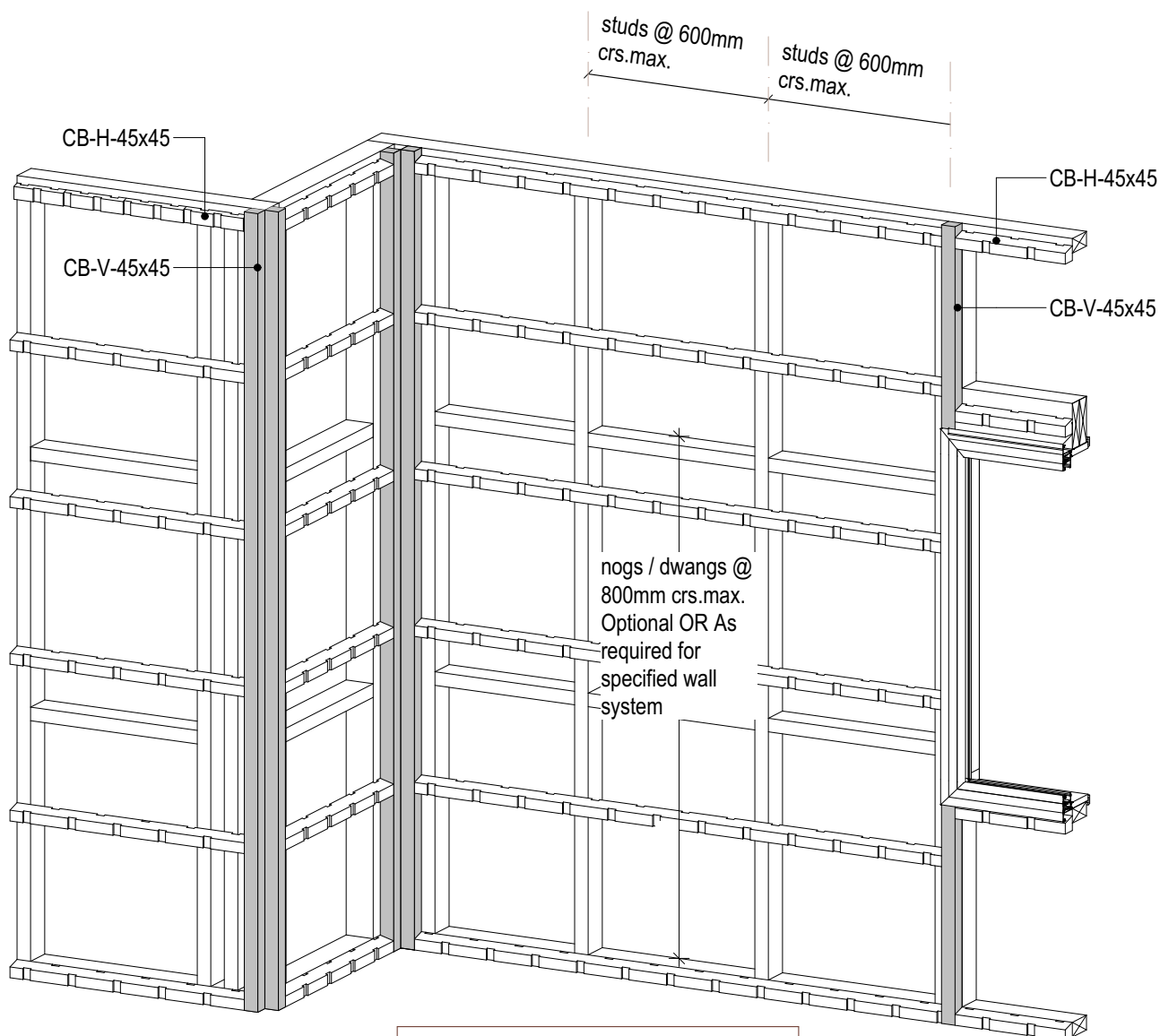
31/05/2021

SHEET NUMBER

**V.C.1**

REVISION

**02**



### **Structural Batten Fix**

CB-H-45x45 & CB-H-45x45  
Fixed at max. 600mm centres with  
4.0x90mm S.S. ring shank flat  
head nails or 8g x 75mm S.S.  
screws staggered 12mm of the  
centre line.



© Abodo Wood Ltd. 2020

info@abodo.co.nz  
T +64 (9) 249 0100

Abodo Wood Ltd.  
62 Ascot Road, Mangere,  
Auckland 2022, New Zealand

SHEET TITLE

## Horizontal 45x45 Cavity Batten Fix

PROFILE

Vertical Shiplap Weatherboard

SCALE:

NTS @ A4

PRINT  
DATE:

31/05/2021

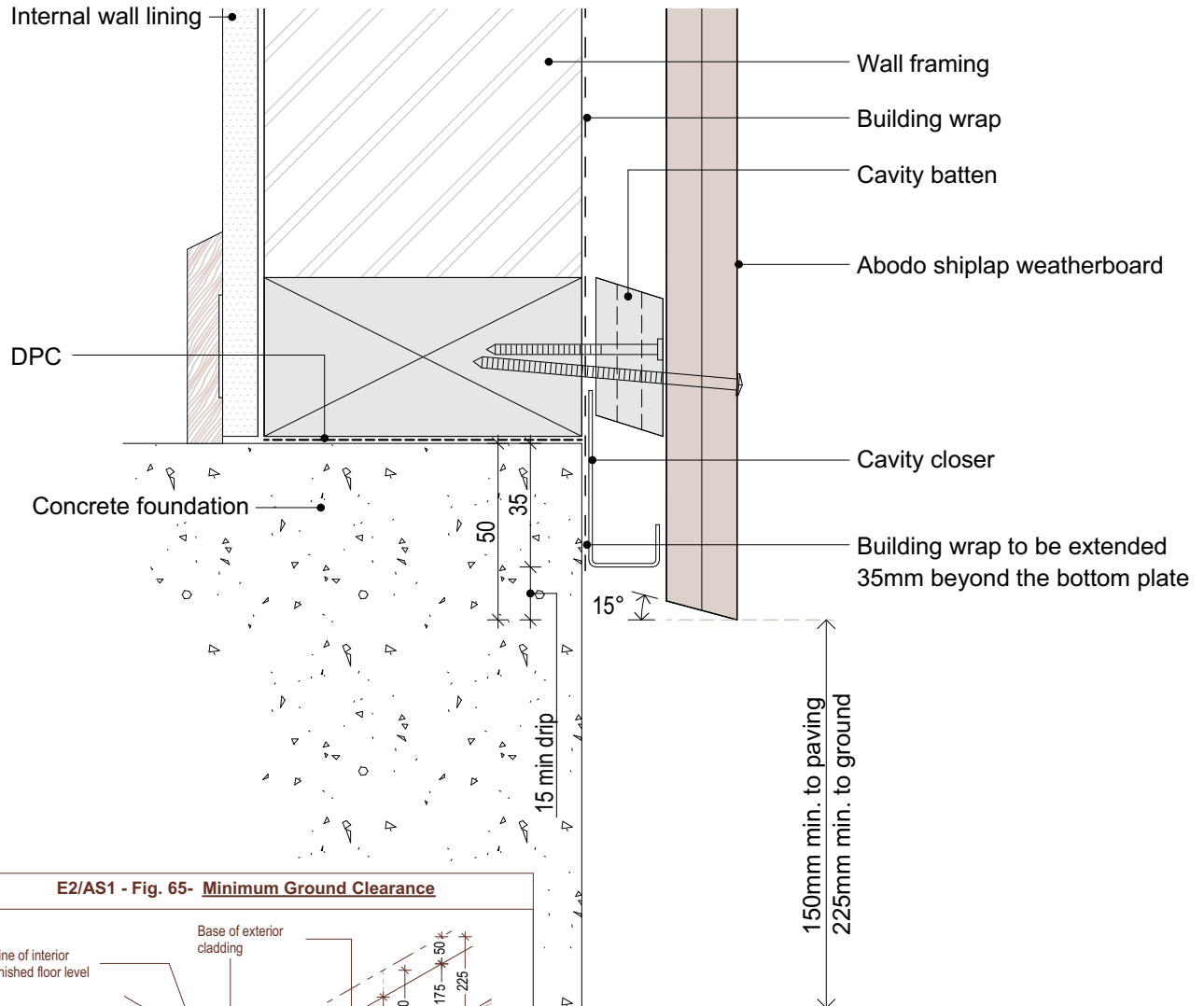
SHEET NUMBER

**V.C.2**

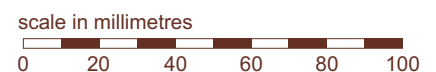
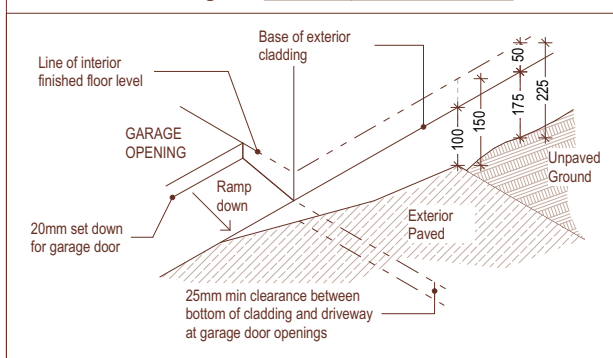
REVISION

**01**

1. Weatherboards must be coated with at least one coat all sides prior to fixing.
2. Fixing points must be pre-drilled minimum 1mm smaller than the fastener.
3. Cut ends and exposed timber must be sealed with an approved coating or end seal.



E2/AS1 - Fig. 65- Minimum Ground Clearance



© Abodo Wood Ltd. 2020  
info@abodo.co.nz  
T +64 (9) 249 0100

Abodo Wood Ltd.  
62 Ascot Road, Mangere,  
Auckland 2022, New Zealand

SHEET TITLE

Base of wall - concrete floor

PROFILE

Vertical Shiplap Weatherboard

SCALE:

1:2 @ A4

PRINT DATE:

01/04/2020

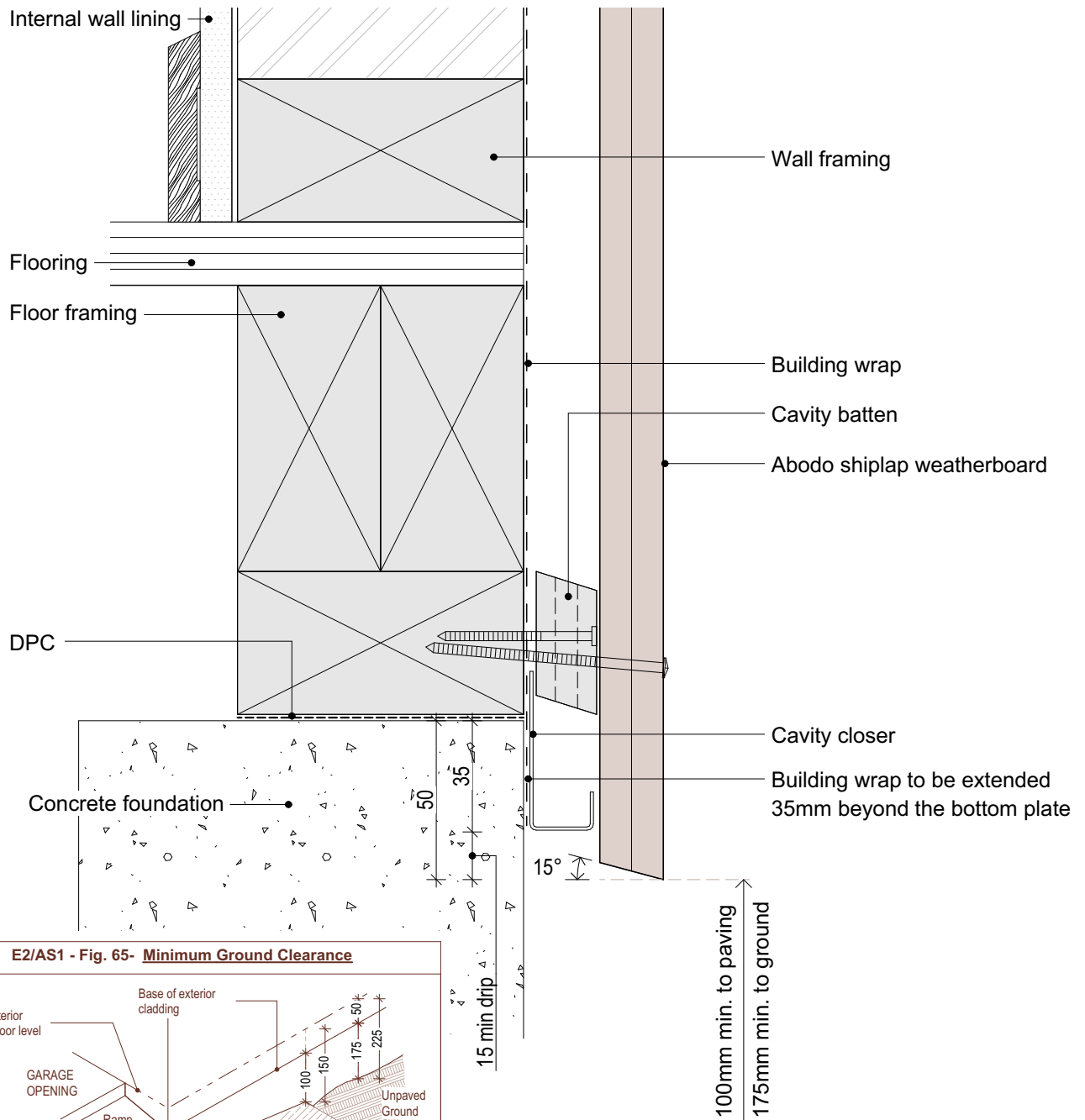
SHEET NUMBER

V.C.3

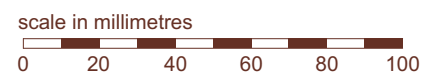
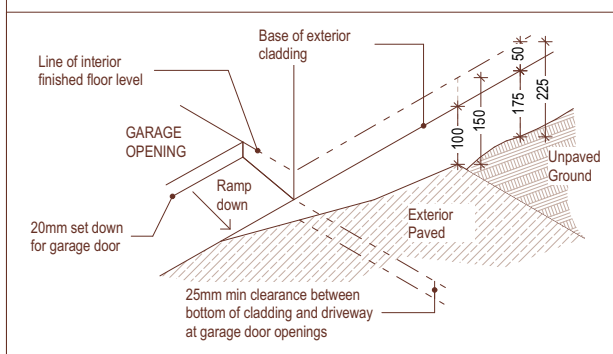
REVISION

01

1. Weatherboards must be coated with at least one coat all sides prior to fixing.
2. Fixing points must be pre-drilled minimum 1mm smaller than the fastener.
3. Cut ends and exposed timber must be sealed with an approved coating or end seal.



E2/AS1 - Fig. 65- Minimum Ground Clearance



© Abodo Wood Ltd. 2020  
info@abodo.co.nz  
T +64 (9) 249 0100

Abodo Wood Ltd.  
62 Ascot Road, Mangere,  
Auckland 2022, New Zealand

SHEET TITLE

Base of wall - Timber floor

PROFILE

Vertical Shiplap Weatherboard

SCALE:

1:2 @ A4

PRINT DATE:

01/04/2020

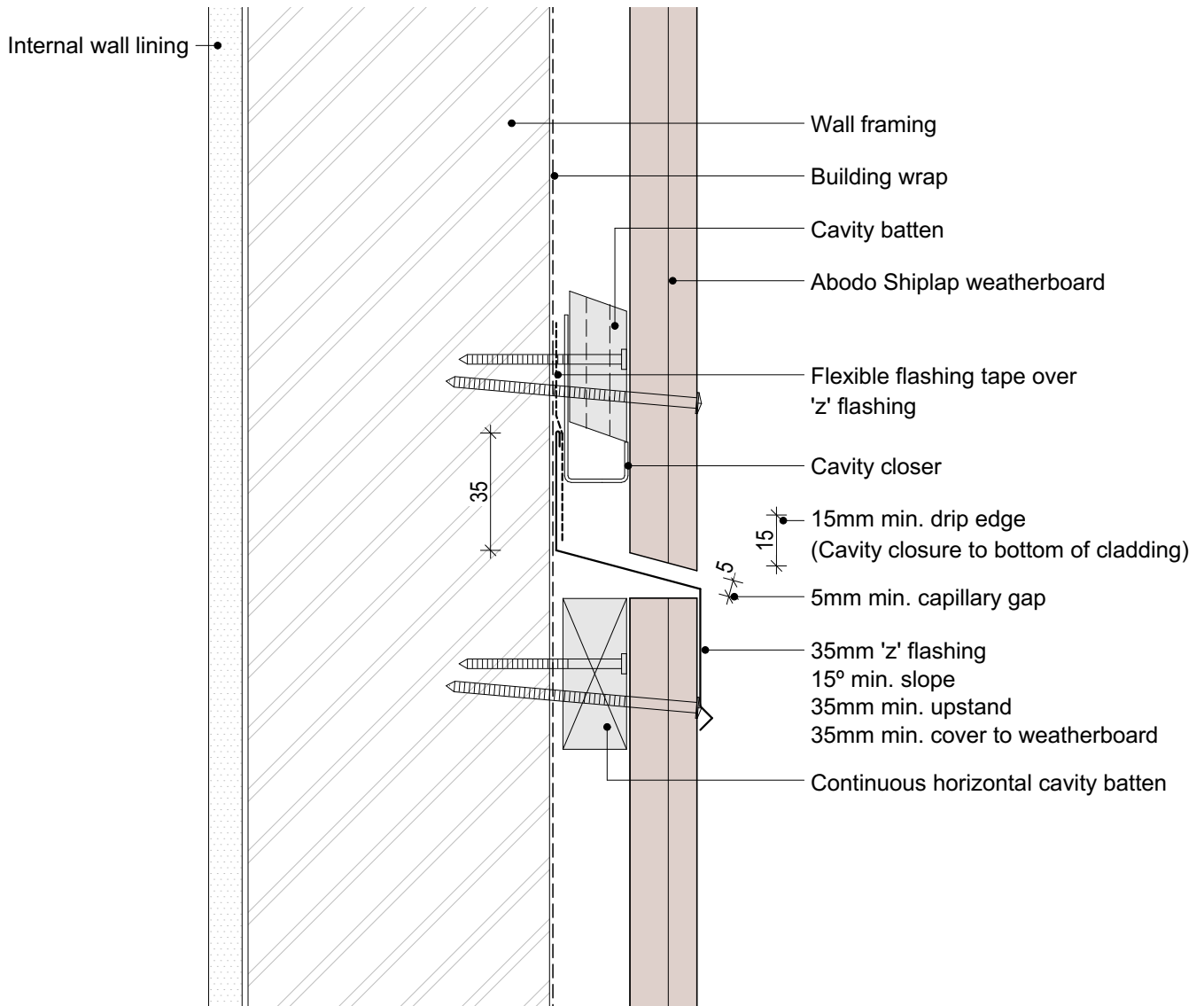
SHEET NUMBER

V.C.4

REVISION

01

1. Weatherboards must be coated with at least one coat all sides prior to fixing.
2. Fixing points must be pre-drilled minimum 1mm smaller than the fastener.
3. Cut ends and exposed timber must be sealed with an approved coating or end seal.



© Abodo Wood Ltd. 2020  
info@abodo.co.nz  
T +64 (9) 249 0100

Abodo Wood Ltd.  
62 Ascot Road, Mangere,  
Auckland 2022, New Zealand

SHEET TITLE

## Inter-Storey Cavity Junction

PROFILE

Vertical Shiplap Weatherboard

SCALE:

1:2 @ A4

PRINT DATE:

01/04/2020

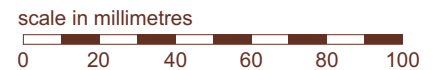
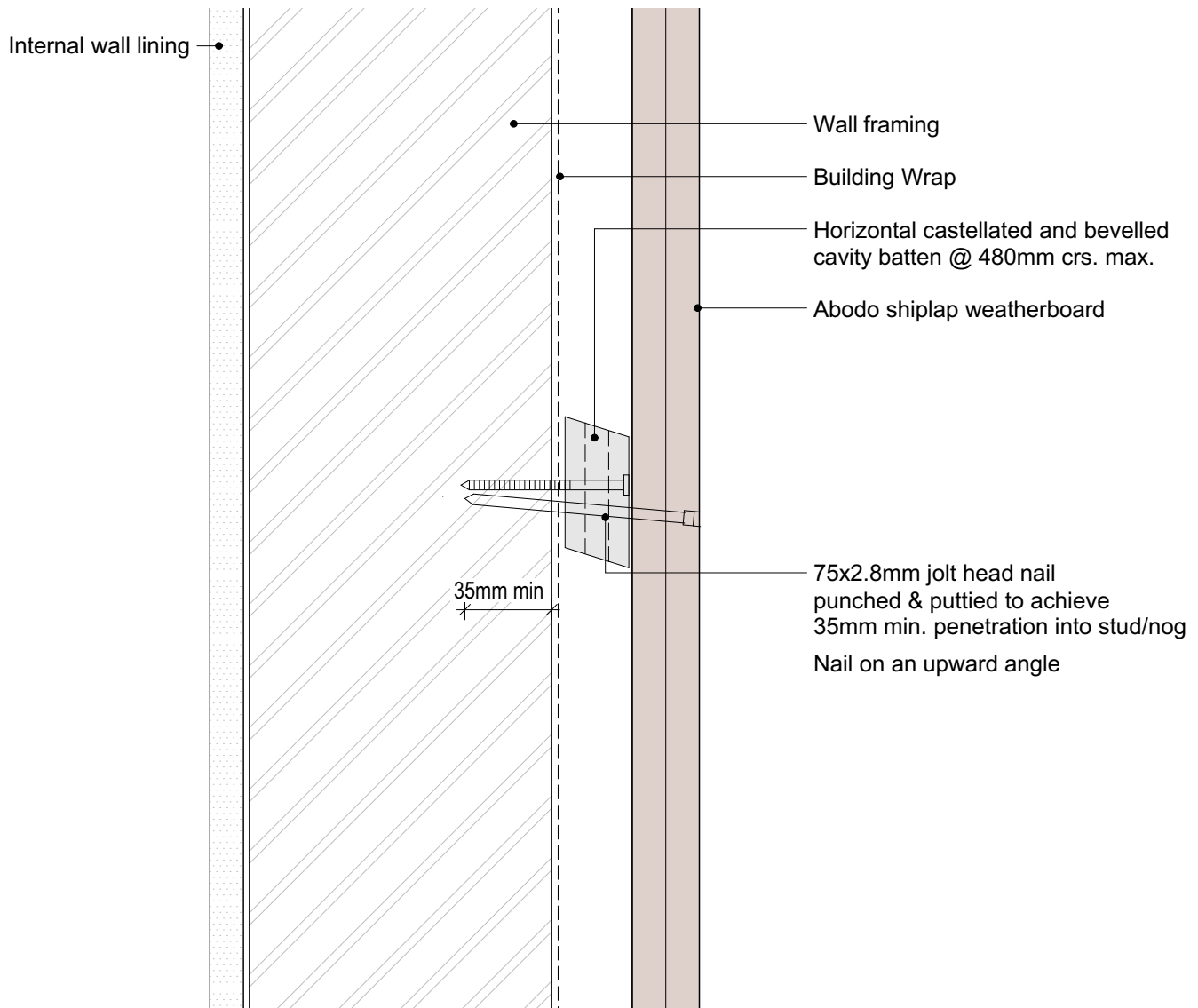
SHEET NUMBER

**V.C.5**

REVISION

**01**

1. Weatherboards must be coated with at least one coat all sides prior to fixing.
2. Fixing points must be pre-drilled minimum 1mm smaller than the fastener.
3. Cut ends and exposed timber must be sealed with an approved coating or end seal.



© Abodo Wood Ltd. 2020  
info@abodo.co.nz  
T +64 (9) 249 0100

Abodo Wood Ltd.  
62 Ascot Road, Mangere,  
Auckland 2022, New Zealand

SHEET TITLE

Packer Cavity Batten - Painted

PROFILE

Vertical Shiplap Weatherboard

SCALE:

1:2 @ A4

PRINT  
DATE:

01/04/2020

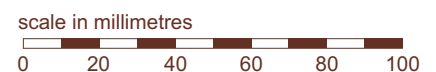
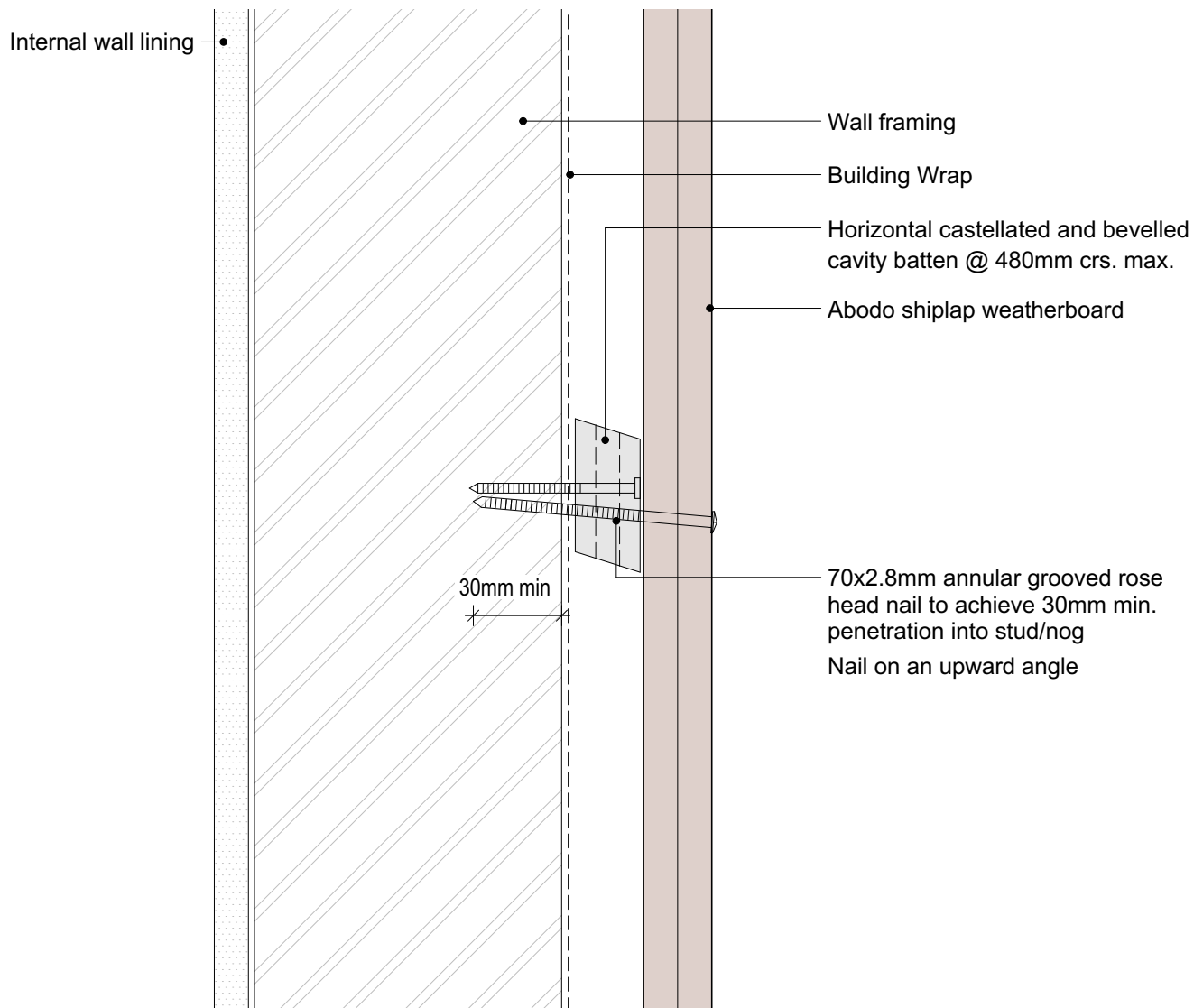
SHEET NUMBER

**V.C.6**

REVISION

**02**

1. Weatherboards must be coated with at least one coat all sides prior to fixing.
2. Fixing points must be pre-drilled minimum 1mm smaller than the fastener.
3. Cut ends and exposed timber must be sealed with an approved coating or end seal.



© Abodo Wood Ltd. 2020  
info@abodo.co.nz  
T +64 (9) 249 0100

SHEET TITLE

Packer Cavity Batten Stained

PROFILE

Vertical Shiplap Weatherboard

SCALE: 1:2 @ A4

PRINT DATE: 01/04/2020

SHEET NUMBER

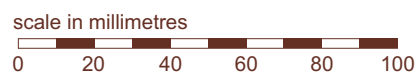
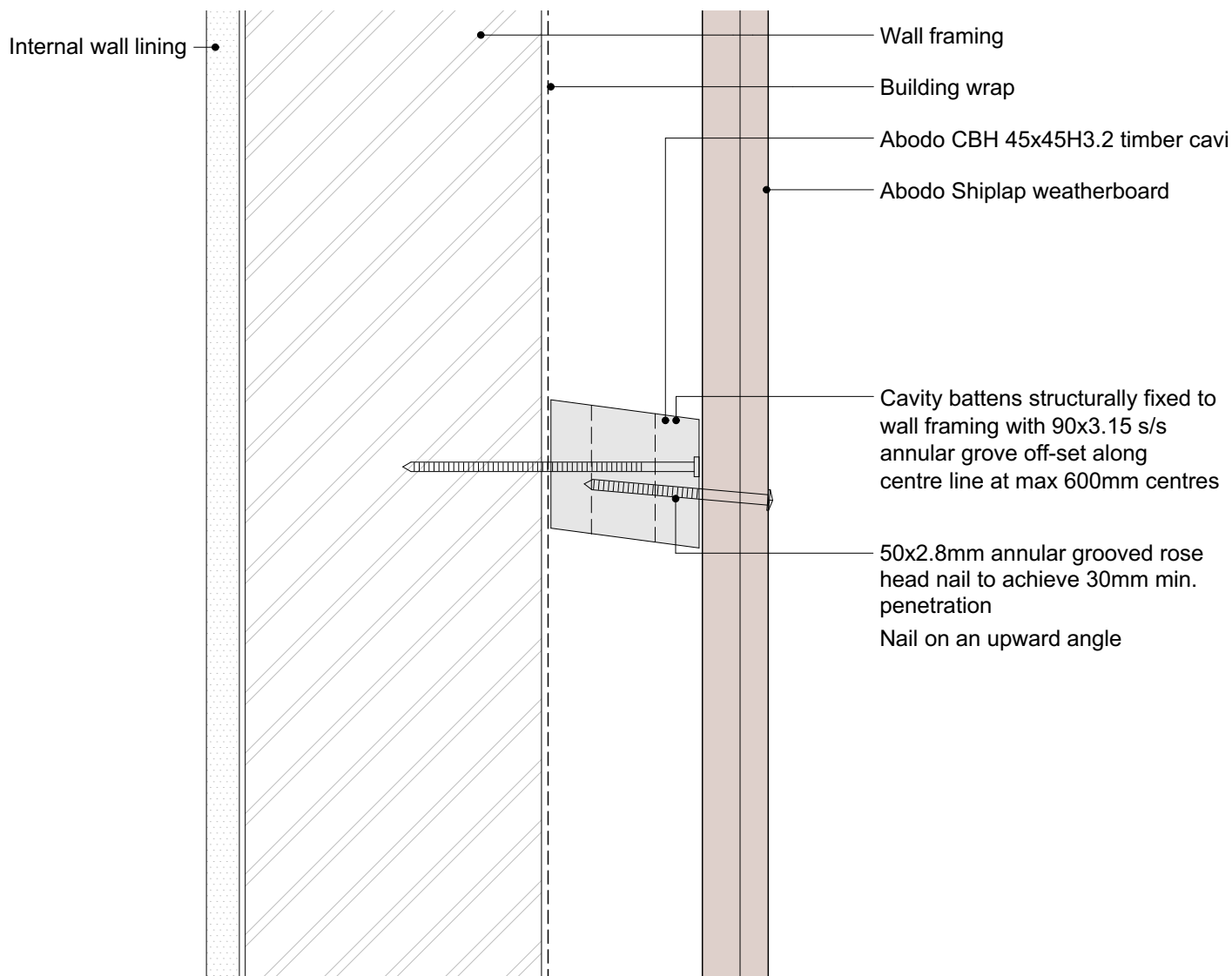
V.C.7

REVISION

02



1. Weatherboards must be coated with at least one coat all sides prior to fixing.
2. Fixing points must be pre-drilled minimum 1mm smaller than the fastener.
3. Cut ends and exposed timber must be sealed with an approved coating or end seal.



© Abodo Wood Ltd. 2020  
info@abodo.co.nz  
T +64 (9) 249 0100

Abodo Wood Ltd.  
62 Ascot Road, Mangere,  
Auckland 2022, New Zealand

SHEET TITLE

Structural 45x45 Cavity Batten - Stained

PROFILE

Vertical Shiplap Weatherboard

SCALE:

1:2 @ A4

PRINT DATE:

01/04/2020

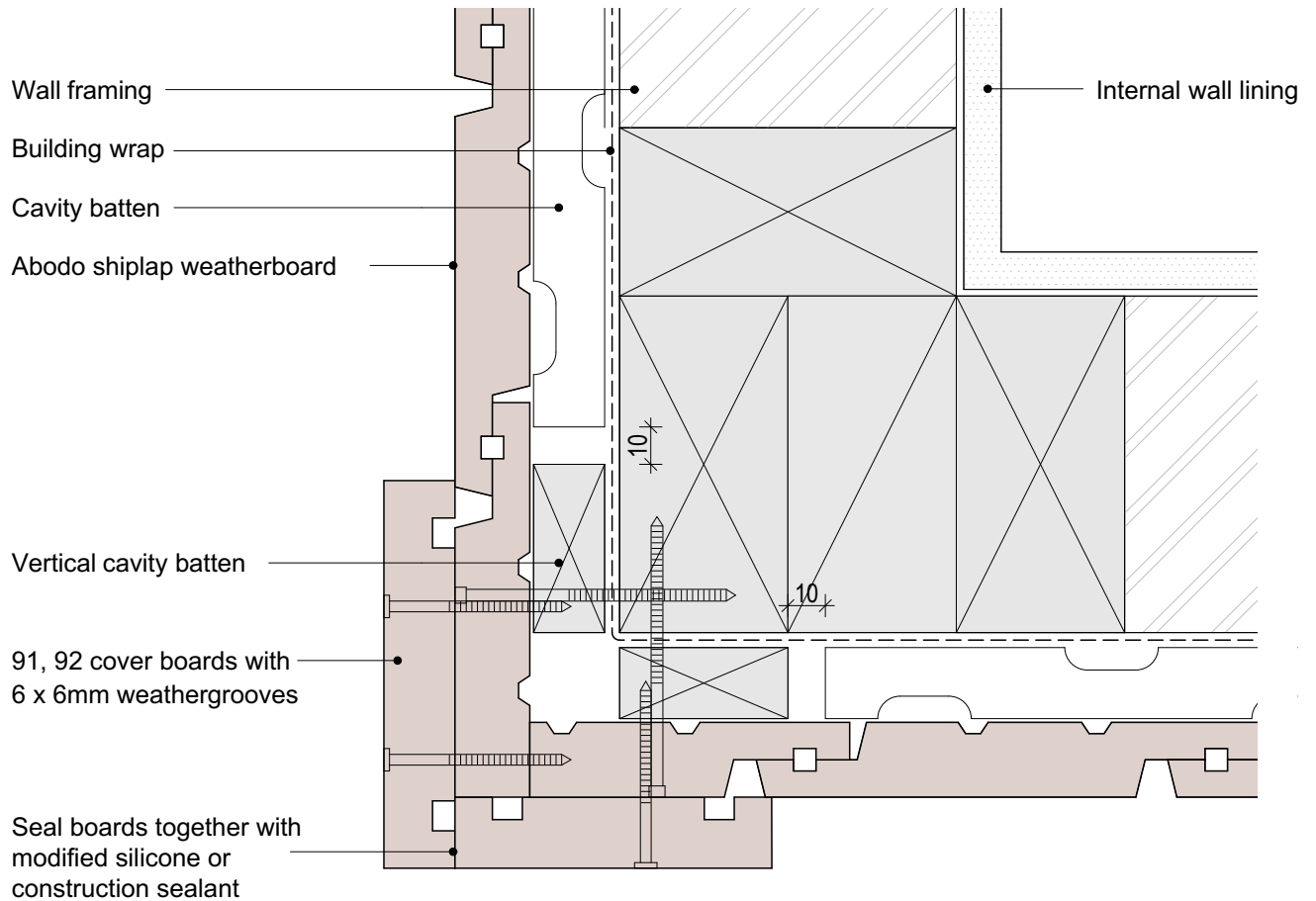
SHEET NUMBER

**V.C.8**

REVISION

**02**

1. Weatherboards must be coated with at least one coat all sides prior to fixing.
2. Fixing points must be pre-drilled minimum 1mm smaller than the fastener.
3. Cut ends and exposed timber must be sealed with an approved coating or end seal.



scale in millimetres

0 20 40 60 80 100



© Abodo Wood Ltd. 2020  
info@abodo.co.nz  
T +64 (9) 249 0100

Abodo Wood Ltd.  
62 Ascot Road, Mangere,  
Auckland 2022, New Zealand

SHEET TITLE

External 90° Corner - Boxed

PROFILE

Vertical Shiplap Weatherboard

SCALE:

1:2 @ A4

PRINT DATE:

01/04/2020

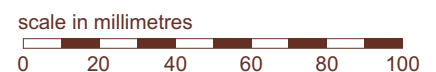
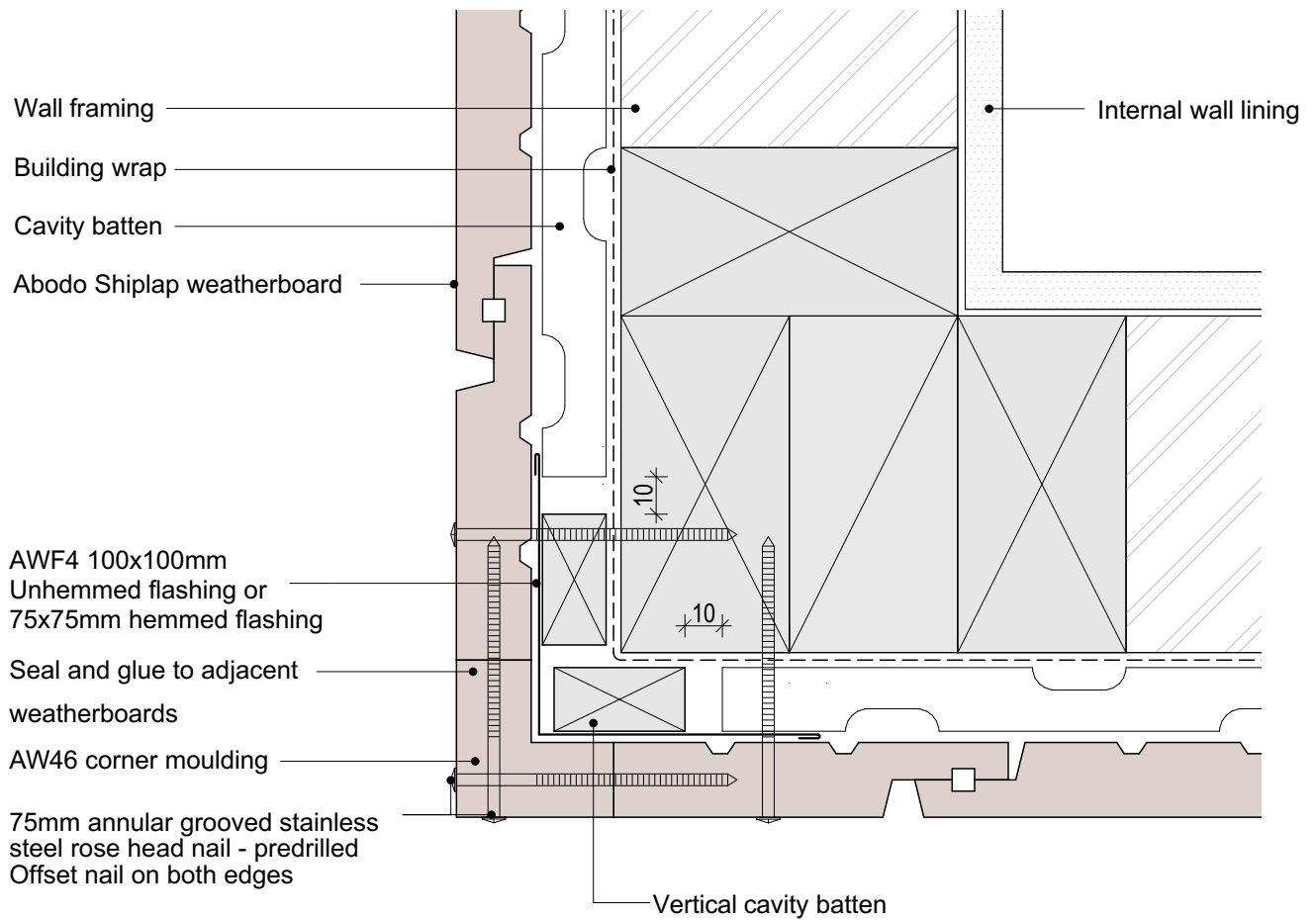
SHEET NUMBER

V.C.9

REVISION

01

1. Weatherboards must be coated with at least one coat all sides prior to fixing.
2. Fixing points must be pre-drilled minimum 1mm smaller than the fastener.
3. Cut ends and exposed timber must be sealed with an approved coating or end seal.



© Abodo Wood Ltd. 2020  
info@abodo.co.nz  
T +64 (9) 249 0100

Abodo Wood Ltd.  
62 Ascot Road, Mangere,  
Auckland 2022, New Zealand

SHEET TITLE

## External 90° Corner - Soaker

PROFILE

Vertical Shiplap Weatherboard

SCALE:

1:2 @ A4

PRINT  
DATE:

01/04/2020

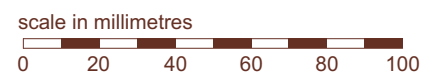
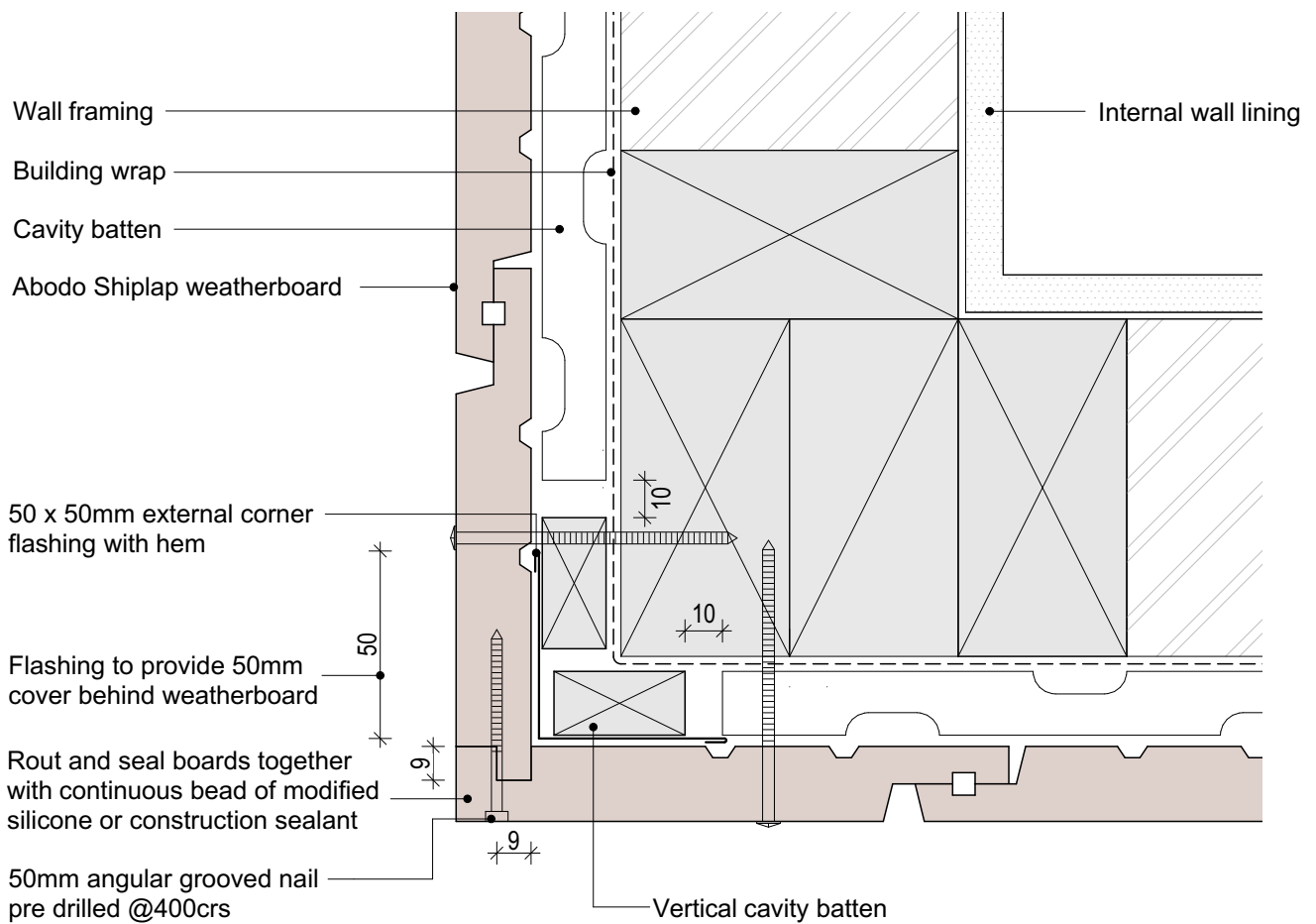
SHEET NUMBER

**V.C.10**

REVISION

**02**

1. Weatherboards must be coated with at least one coat all sides prior to fixing.
2. Fixing points must be pre-drilled minimum 1mm smaller than the fastener.
3. Cut ends and exposed timber must be sealed with an approved coating or end seal.



© Abodo Wood Ltd. 2020  
 info@abodo.co.nz  
 T +64 (9) 249 0100

Abodo Wood Ltd.  
 62 Ascot Road, Mangere,  
 Auckland 2022, New Zealand

SHEET TITLE

## External 90° Corner - Rebated

PROFILE

Vertical Shiplap Weatherboard

SCALE:

1:2 @ A4

PRINT  
DATE:

01/04/2020

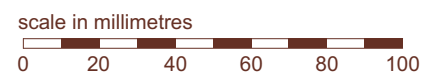
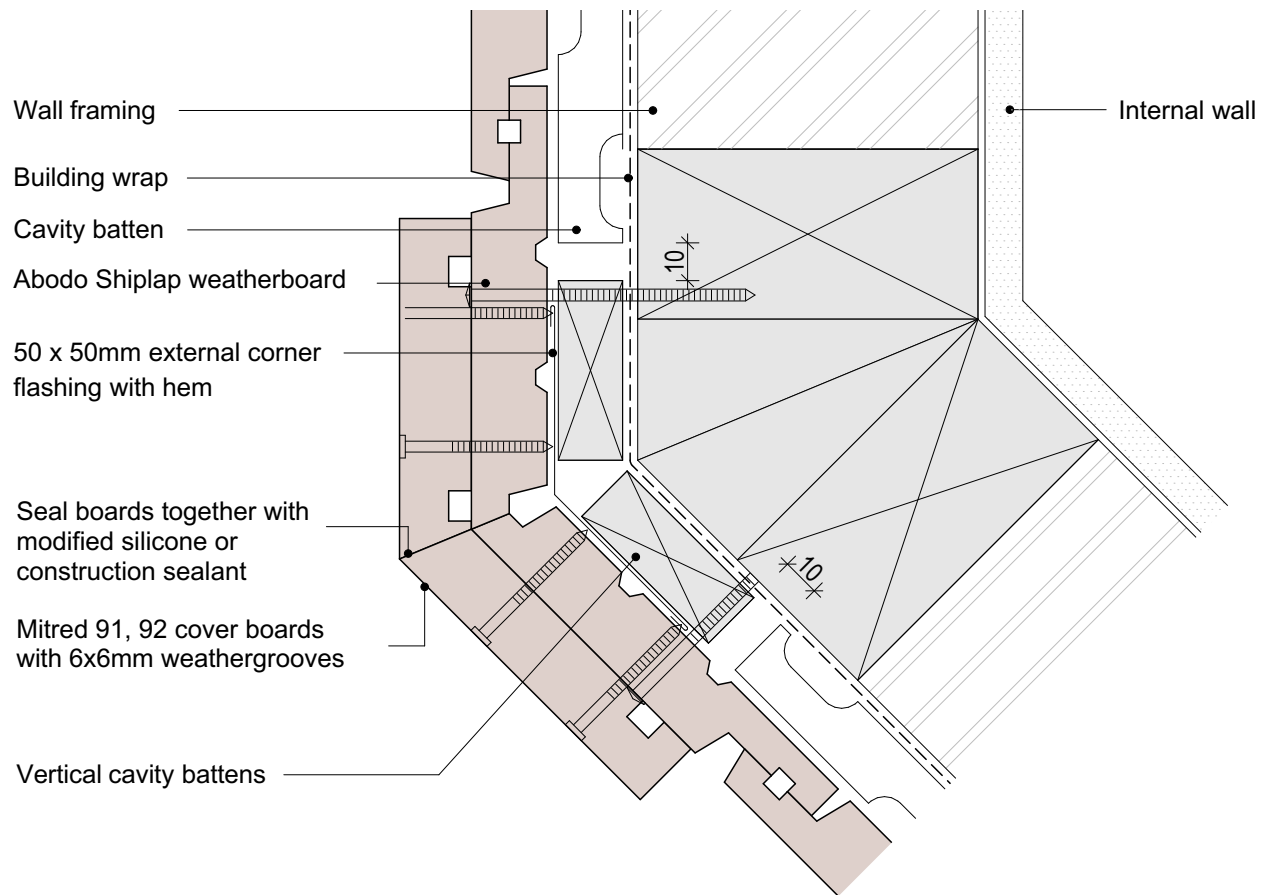
SHEET NUMBER

**V.C.11**

REVISION

**02**

1. Weatherboards must be coated with at least one coat all sides prior to fixing.
2. Fixing points must be pre-drilled minimum 1mm smaller than the fastener.
3. Cut ends and exposed timber must be sealed with an approved coating or end seal.



© Abodo Wood Ltd. 2020  
 info@abodo.co.nz  
 T +64 (9) 249 0100

Abodo Wood Ltd.  
 62 Ascot Road, Mangere,  
 Auckland 2022, New Zealand

SHEET TITLE

## External 135° Corner - Soaker

PROFILE

Vertical Shiplap Weatherboard

SCALE:

1:2 @ A4

PRINT DATE:

01/04/2020

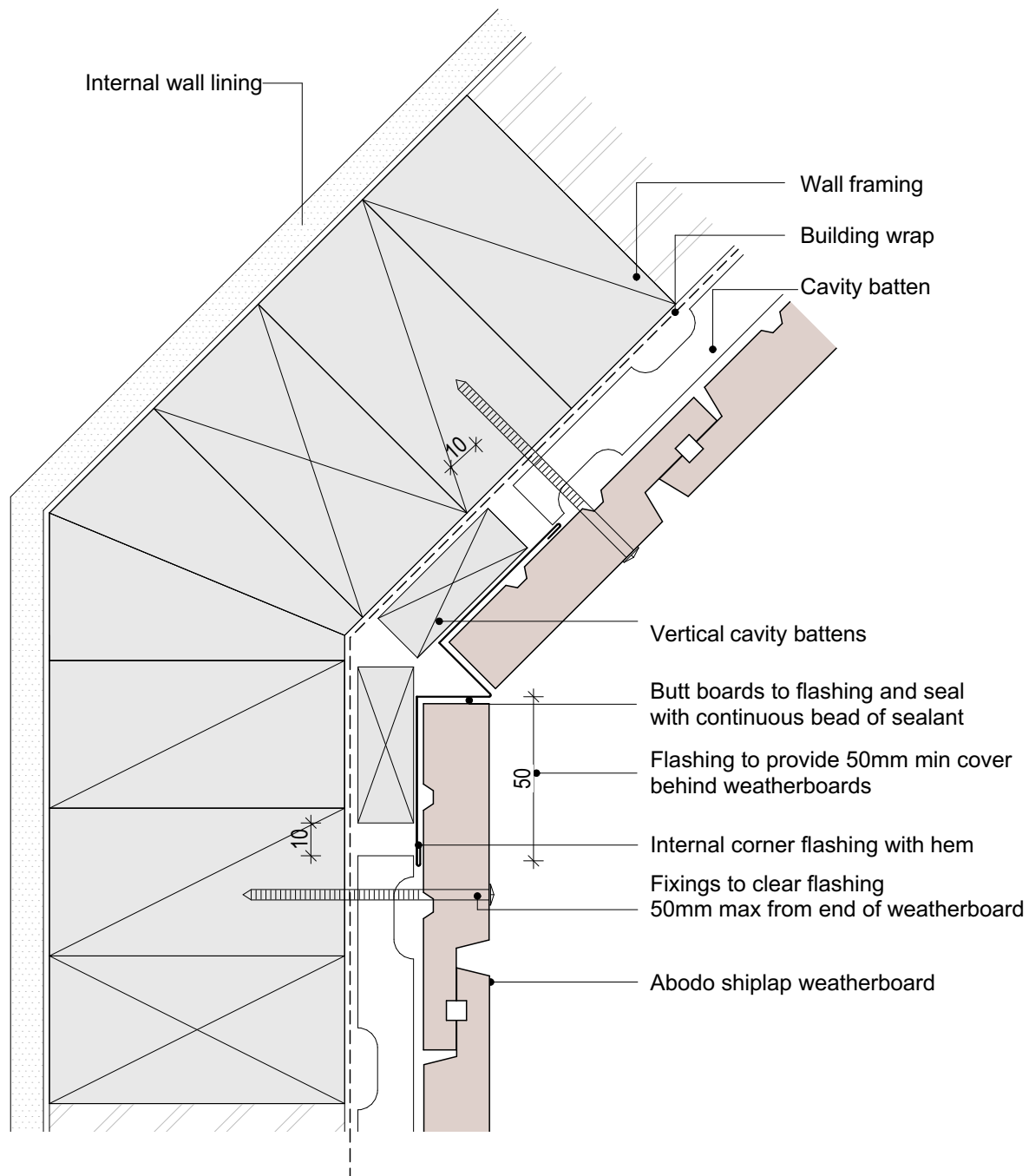
SHEET NUMBER

**V.C.12**

REVISION

**02**

1. Weatherboards must be coated with at least one coat all sides prior to fixing.
2. Fixing points must be pre-drilled minimum 1mm smaller than the fastener.
3. Cut ends and exposed timber must be sealed with an approved coating or end seal.



scale in millimetres

0 20 40 60 80 100



© Abodo Wood Ltd. 2020  
info@abodo.co.nz  
T +64 (9) 249 0100

Abodo Wood Ltd.  
62 Ascot Road, Mangere,  
Auckland 2022, New Zealand

SHEET TITLE

## Internal 135° Corner - W Flashing

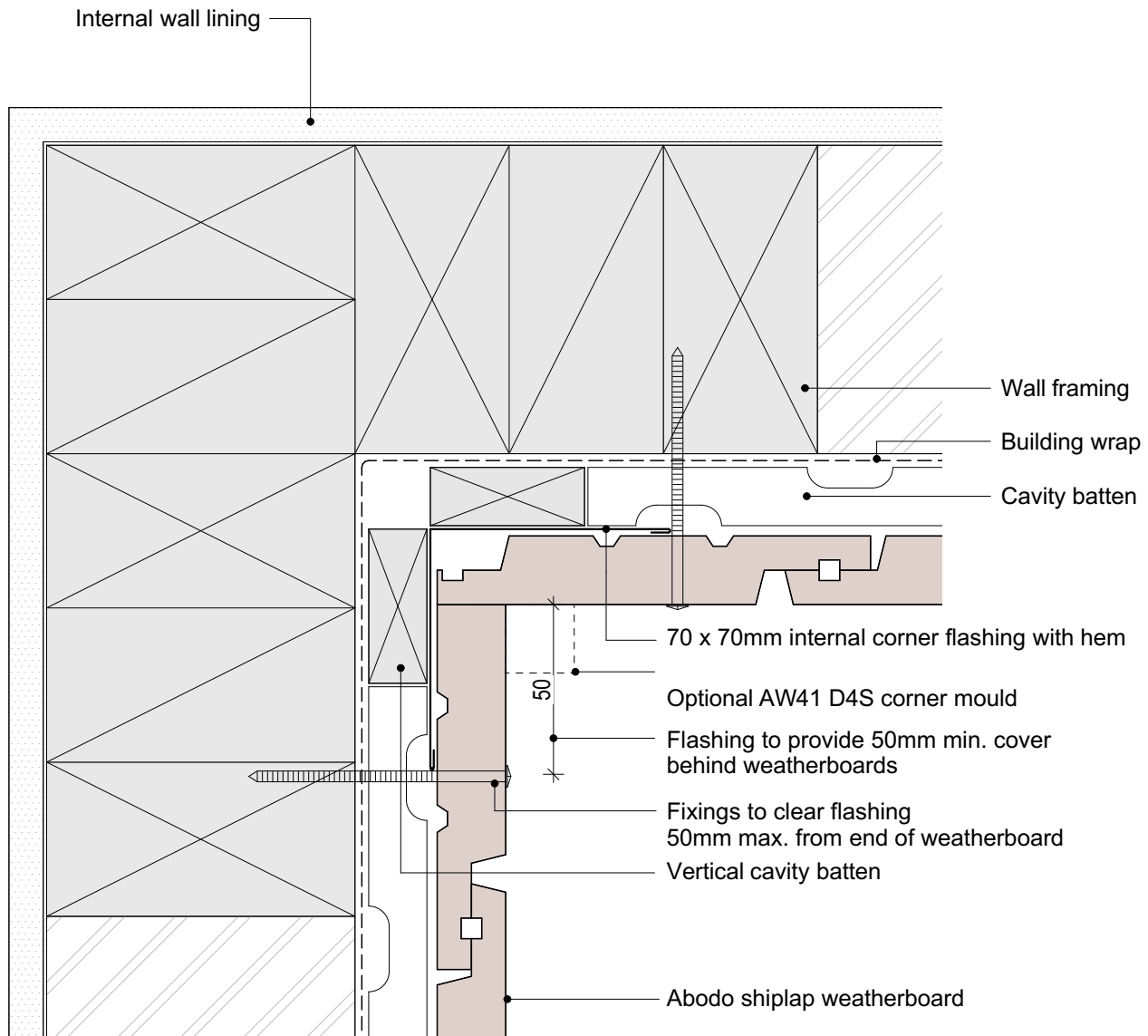
PROFILE

Vertical Shiplap Weatherboard

SCALE: 1:2 @ A4  
PRINT DATE: 01/04/2020

SHEET NUMBER REVISION  
**V.C.13 02**

1. Weatherboards must be coated with at least one coat all sides prior to fixing.
2. Fixing points must be pre-drilled minimum 1mm smaller than the fastener.
3. Cut ends and exposed timber must be sealed with an approved coating or end seal.



© Abodo Wood Ltd. 2020  
 info@abodo.co.nz  
 T +64 (9) 249 0100

Abodo Wood Ltd.  
 62 Ascot Road, Mangere,  
 Auckland 2022, New Zealand

SHEET TITLE

## Internal 90° Corner- Scribed & Notched

PROFILE

Vertical Shiplap Weatherboard

SCALE:

1:2 @ A4

PRINT DATE:

01/04/2020

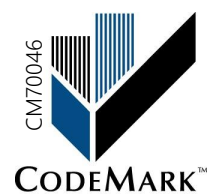
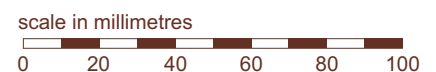
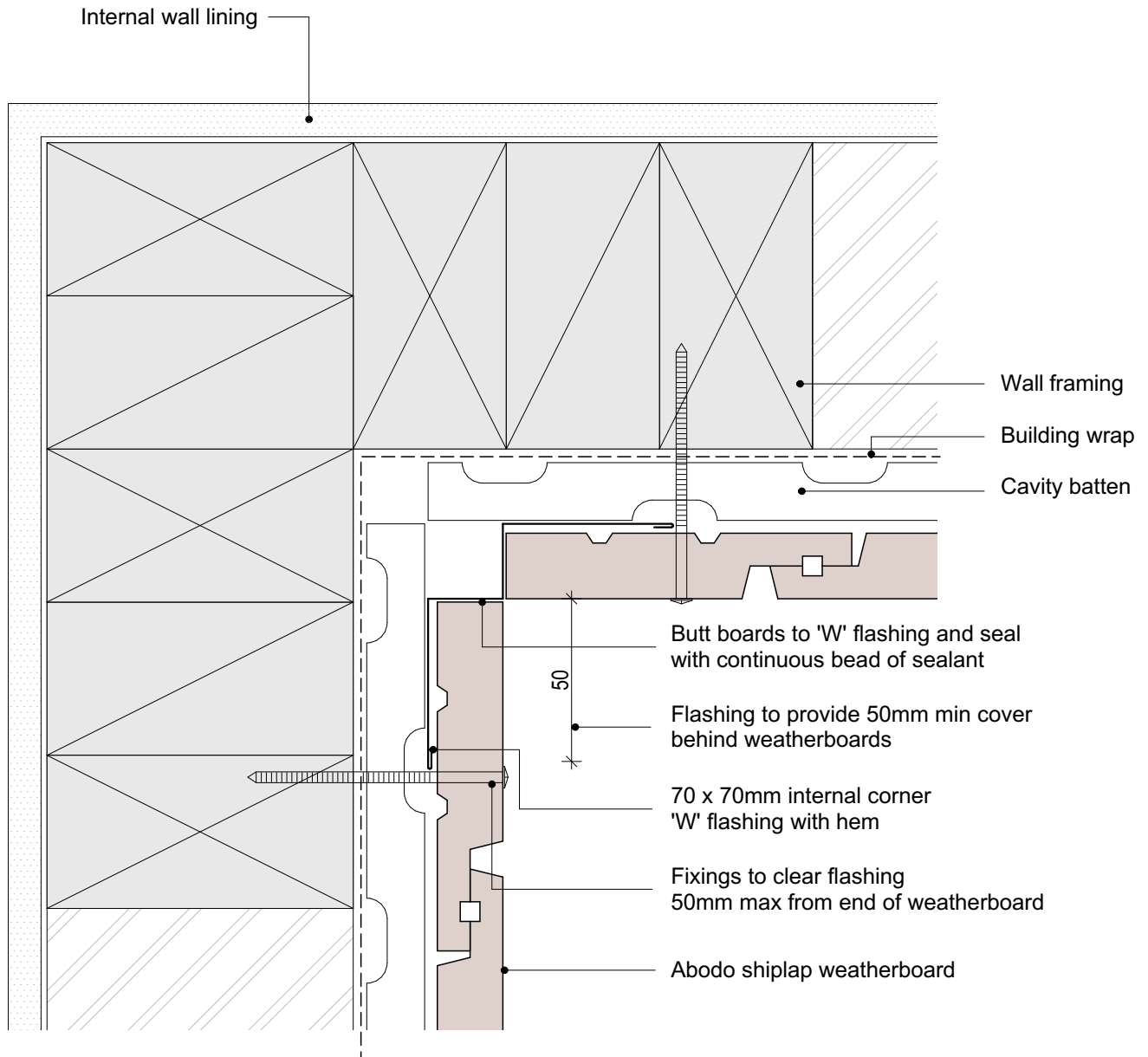
SHEET NUMBER

**V.C.14**

REVISION

**01**

1. Weatherboards must be coated with at least one coat all sides prior to fixing.
2. Fixing points must be pre-drilled minimum 1mm smaller than the fastener.
3. Cut ends and exposed timber must be sealed with an approved coating or end seal.



© Abodo Wood Ltd. 2020  
 info@abodo.co.nz  
 T +64 (9) 249 0100

Abodo Wood Ltd.  
 62 Ascot Road, Mangere,  
 Auckland 2022, New Zealand

SHEET TITLE

## Internal 90° Corner - W Flashing

PROFILE

Vertical Shiplap Weatherboard

SCALE:

1:2 @ A4

PRINT  
DATE:

01/04/2020

SHEET NUMBER

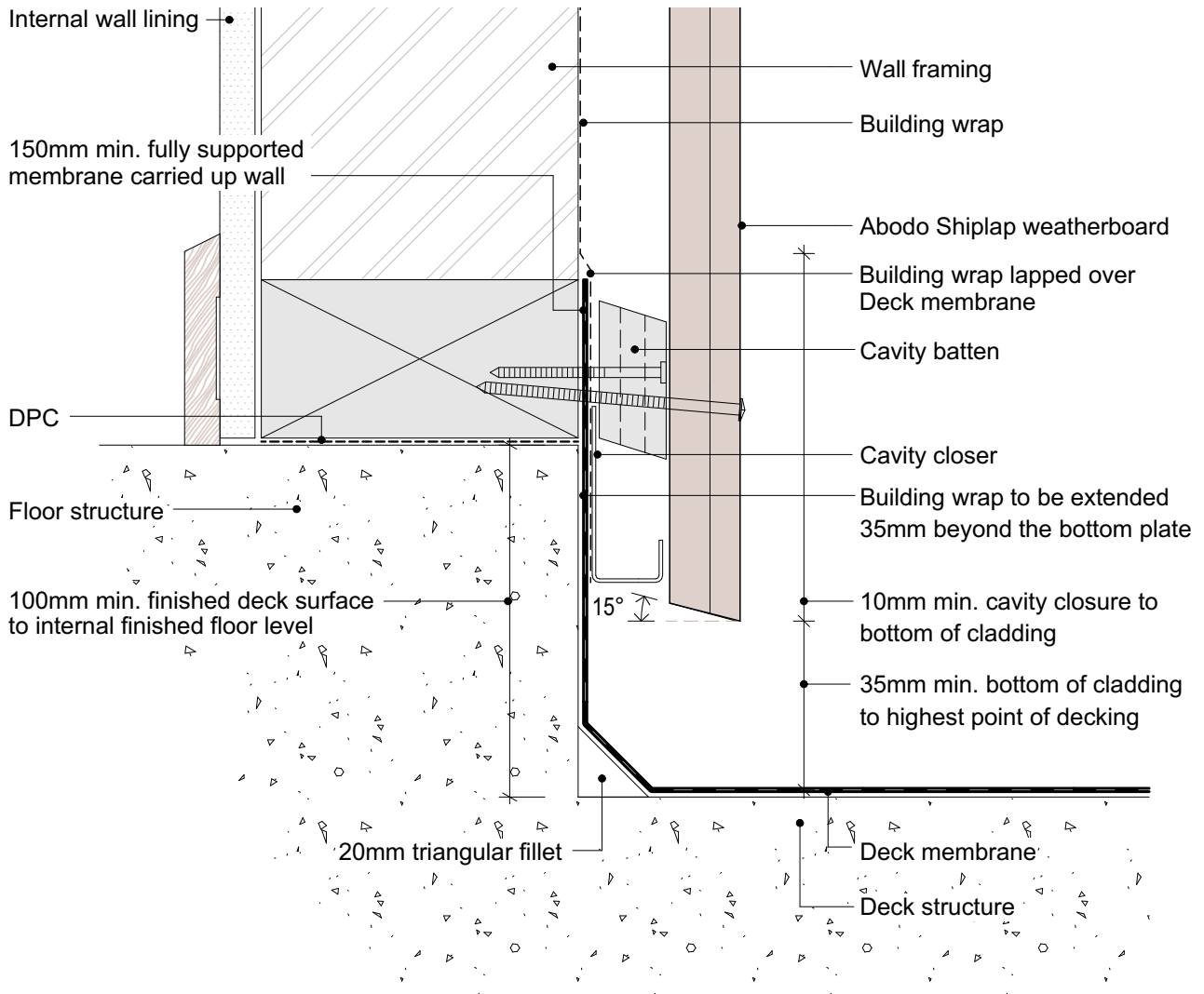
**V.C.15**

REVISION

**01**



1. Weatherboards must be coated with at least one coat all sides prior to fixing.
2. Fixing points must be pre-drilled minimum 1mm smaller than the fastener.
3. Cut ends and exposed timber must be sealed with an approved coating or end seal.



scale in millimetres

0 20 40 60 80 100



© Abodo Wood Ltd. 2020

info@abodo.co.nz  
T +64 (9) 249 0100

Abodo Wood Ltd.  
62 Ascot Road, Mangere,  
Auckland 2022, New Zealand

SHEET TITLE

## Enclosed Deck - Concrete Substrate

PROFILE

Vertical Shiplap Weatherboard

SCALE:

1:2 @ A4

PRINT DATE:

01/04/2020

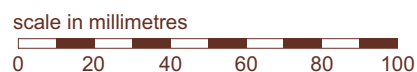
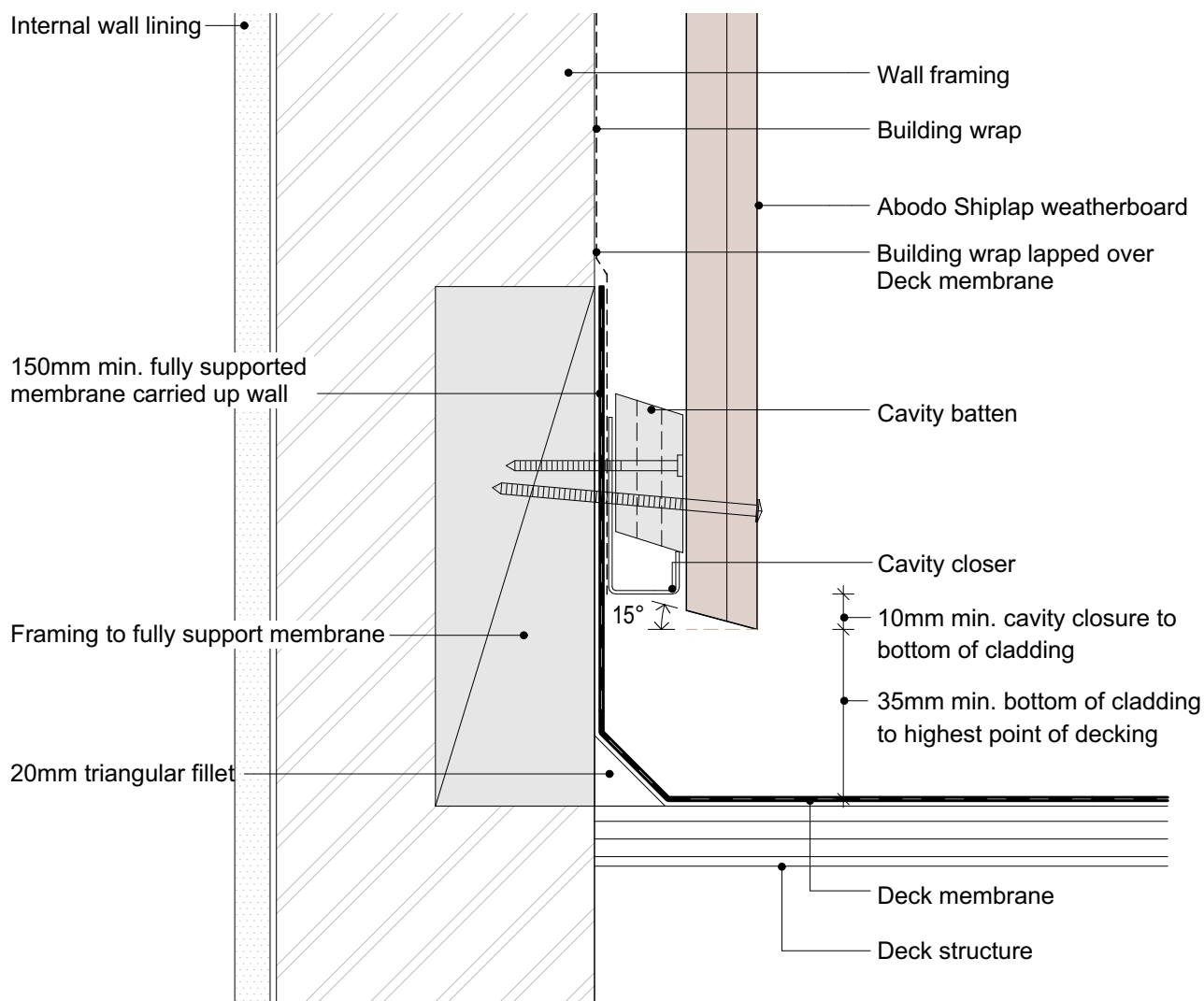
SHEET NUMBER

**V.C.16**

REVISION

**02**

1. Weatherboards must be coated with at least one coat all sides prior to fixing.
2. Fixing points must be pre-drilled minimum 1mm smaller than the fastener.
3. Cut ends and exposed timber must be sealed with an approved coating or end seal.



© Abodo Wood Ltd. 2020  
 info@abodo.co.nz  
 T +64 (9) 249 0100

Abodo Wood Ltd.  
 62 Ascot Road, Mangere,  
 Auckland 2022, New Zealand

SHEET TITLE

## Enclosed Deck - Timber Substrate

PROFILE

Vertical Shiplap Weatherboard

SCALE:

1:2 @ A4

PRINT DATE:

01/04/2020

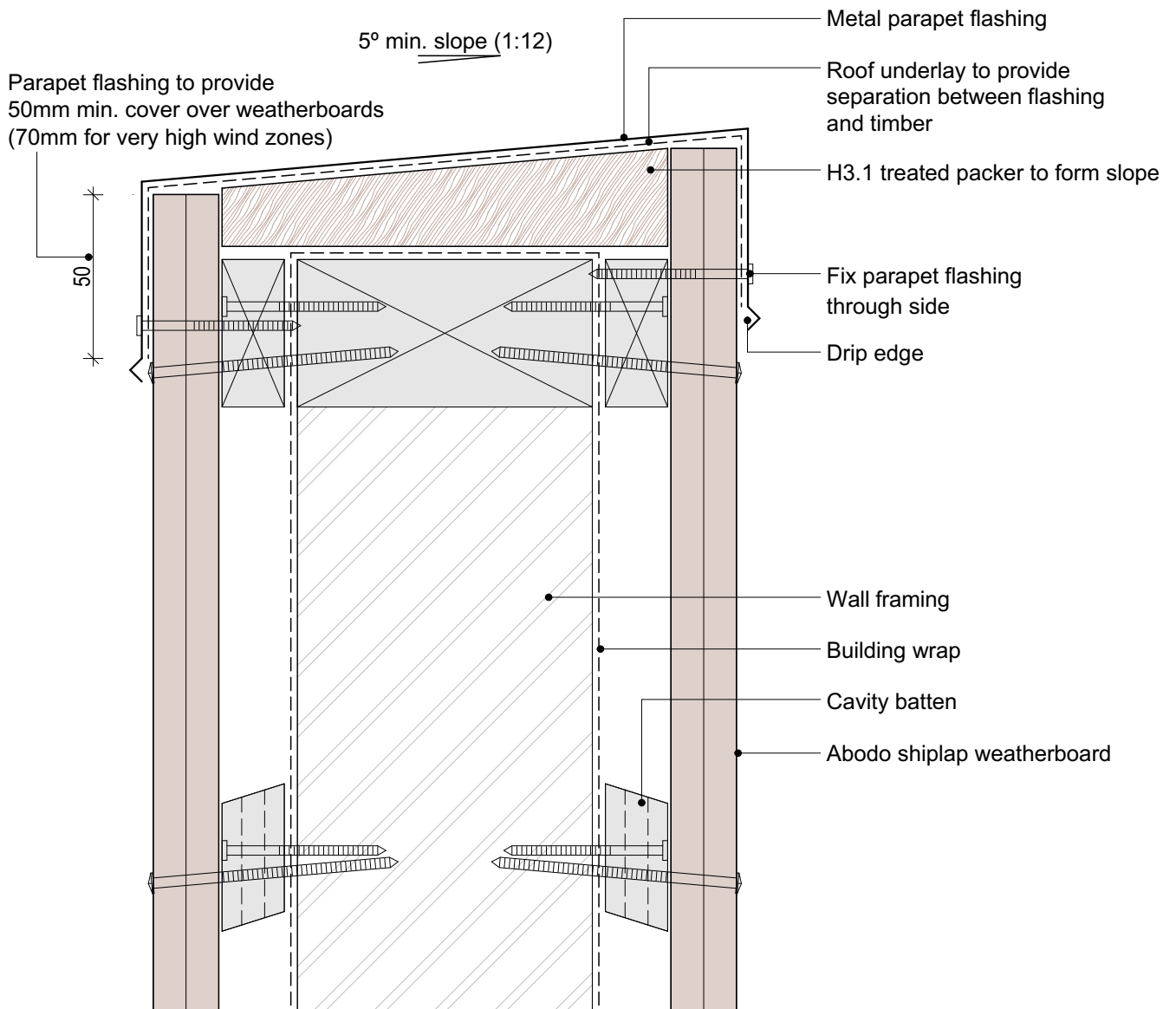
SHEET NUMBER

V.C.17

REVISION

01

1. Weatherboards must be coated with at least one coat all sides prior to fixing.
2. Fixing points must be pre-drilled minimum 1mm smaller than the fastener.
3. Cut ends and exposed timber must be sealed with an approved coating or end seal.



© Abodo Wood Ltd. 2020  
 info@abodo.co.nz  
 T +64 (9) 249 0100

Abodo Wood Ltd.  
 62 Ascot Road, Mangere,  
 Auckland 2022, New Zealand

SHEET TITLE

## Parapet Balustrade Cap Flashing

PROFILE

Vertical Shiplap Weatherboard

SCALE: 1:2 @ A4

PRINT DATE: 01/04/2020

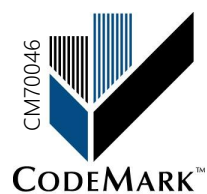
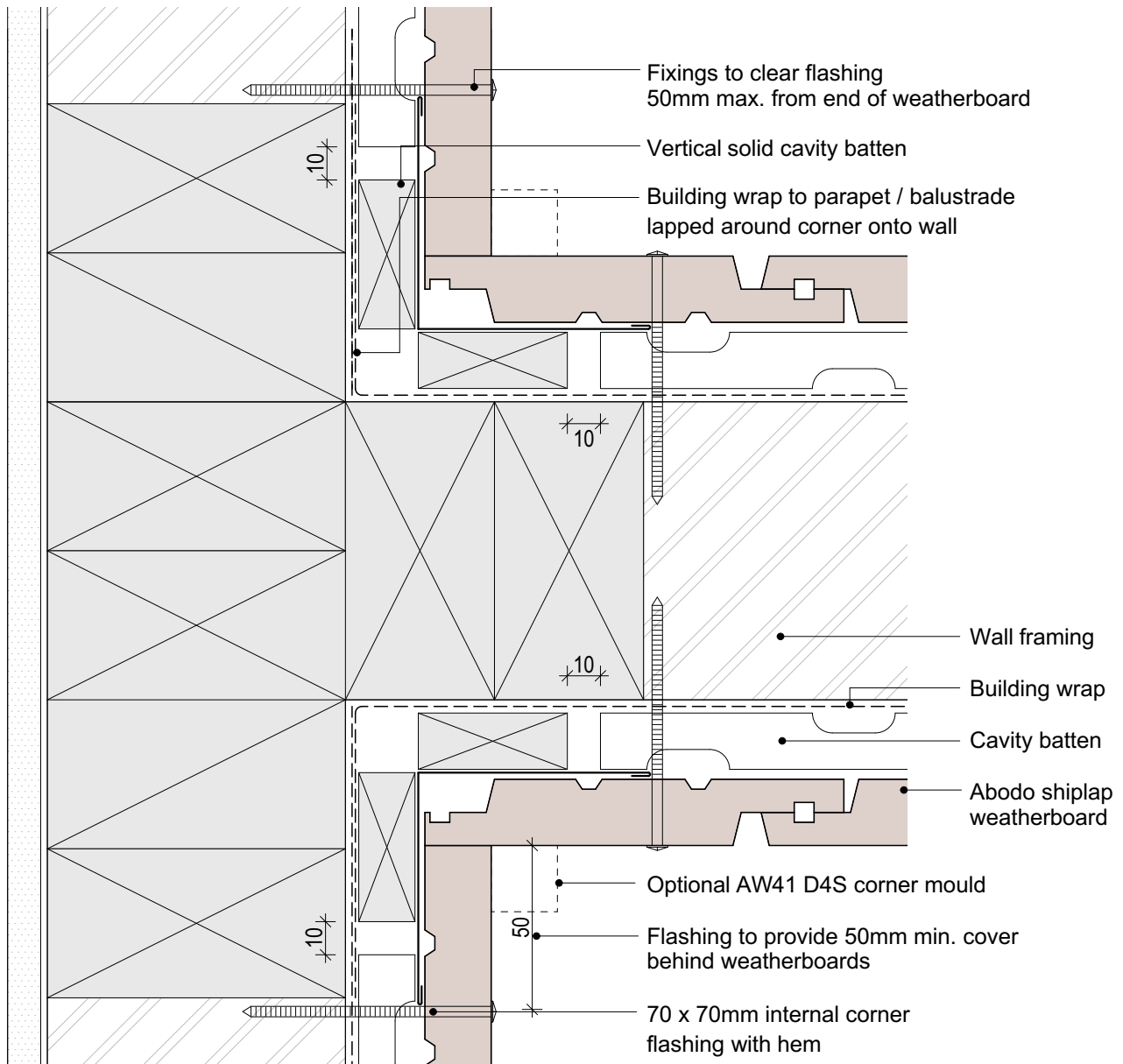
SHEET NUMBER

V.C.18

REVISION

01

1. Weatherboards must be coated with at least one coat all sides prior to fixing.
2. Fixing points must be pre-drilled minimum 1mm smaller than the fastener.
3. Cut ends and exposed timber must be sealed with an approved coating or end seal.



© Abodo Wood Ltd. 2020  
 info@abodo.co.nz  
 T +64 (9) 249 0100

Abodo Wood Ltd.  
 62 Ascot Road, Mangere,  
 Auckland 2022, New Zealand

SHEET TITLE

## Parapet Balustrade Intersection With Wall - Butted

PROFILE

Vertical Shiplap Weatherboard

SCALE: 1:2 @ A4

PRINT DATE: 01/04/2020

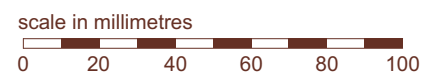
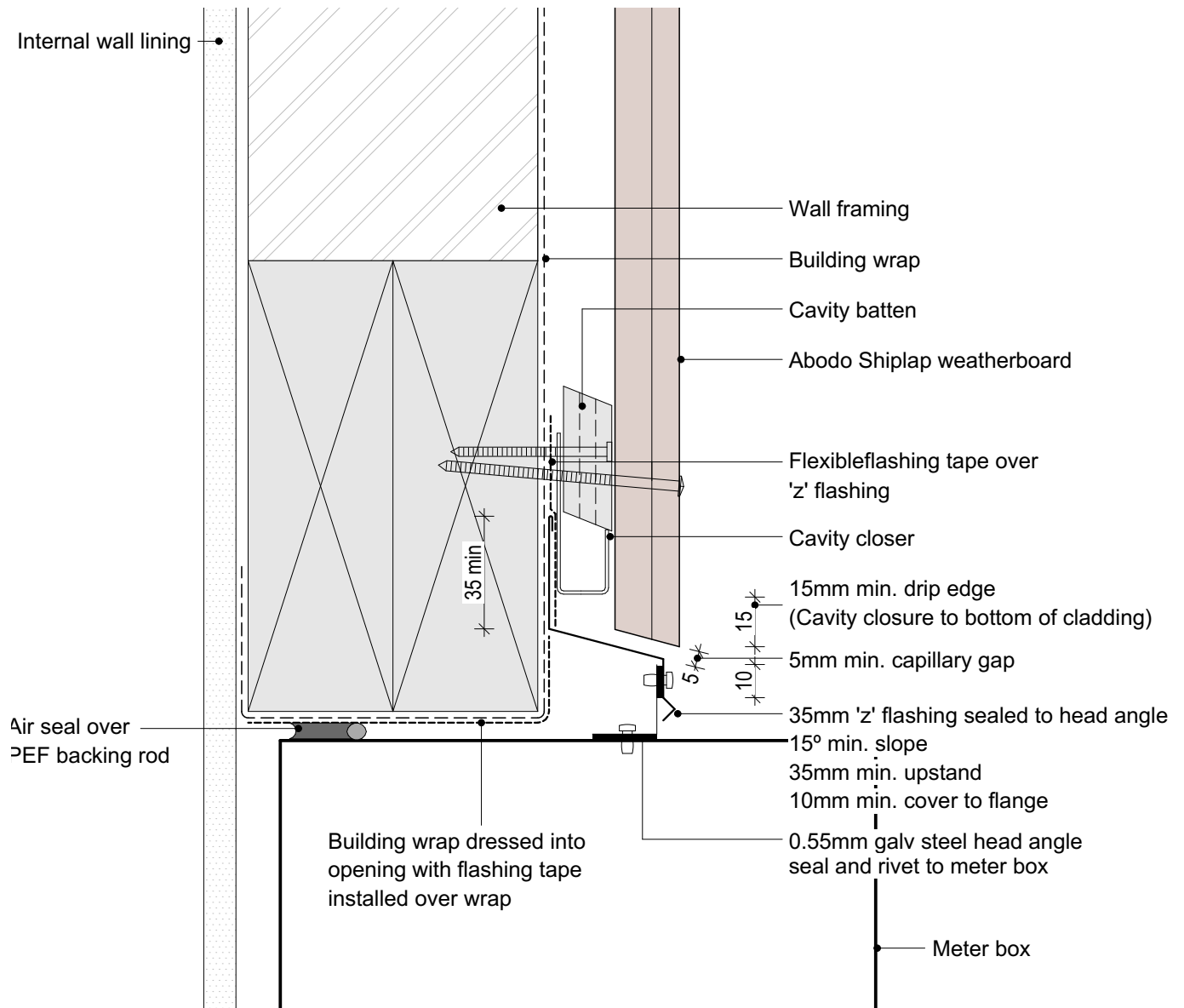
SHEET NUMBER

**V.C.19**

REVISION

**01**

1. Weatherboards must be coated with at least one coat all sides prior to fixing.
2. Fixing points must be pre-drilled minimum 1mm smaller than the fastener.
3. Cut ends and exposed timber must be sealed with an approved coating or end seal.



© Abodo Wood Ltd. 2020  
info@abodo.co.nz  
T +64 (9) 249 0100

Abodo Wood Ltd.  
62 Ascot Road, Mangere,  
Auckland 2022, New Zealand

SHEET TITLE

## Meter Box Head

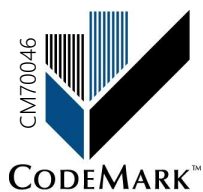
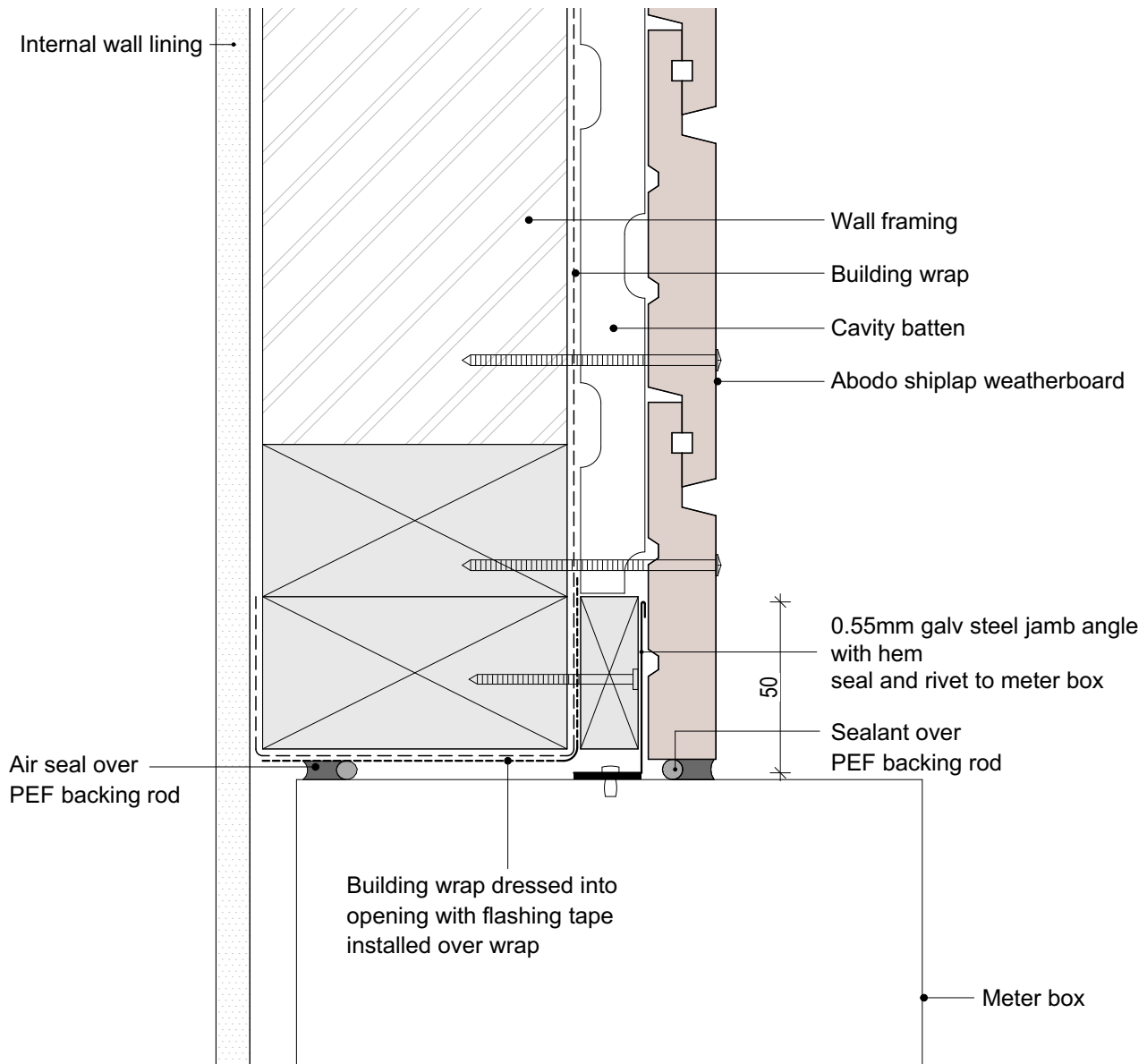
PROFILE

Vertical Shiplap Weatherboard

SCALE: 1:2 @ A4  
PRINT DATE: 01/04/2020

SHEET NUMBER REVISION  
**V.C.20 01**

1. Weatherboards must be coated with at least one coat all sides prior to fixing.
2. Fixing points must be pre-drilled minimum 1mm smaller than the fastener.
3. Cut ends and exposed timber must be sealed with an approved coating or end seal.



© Abodo Wood Ltd. 2020  
 info@abodo.co.nz  
 T +64 (9) 249 0100

Abodo Wood Ltd.  
 62 Ascot Road, Mangere,  
 Auckland 2022, New Zealand

SHEET TITLE

## Meter Box Jamb

PROFILE

Vertical Shiplap Weatherboard

SCALE:

1:2 @ A4

PRINT DATE:

01/04/2020

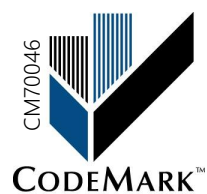
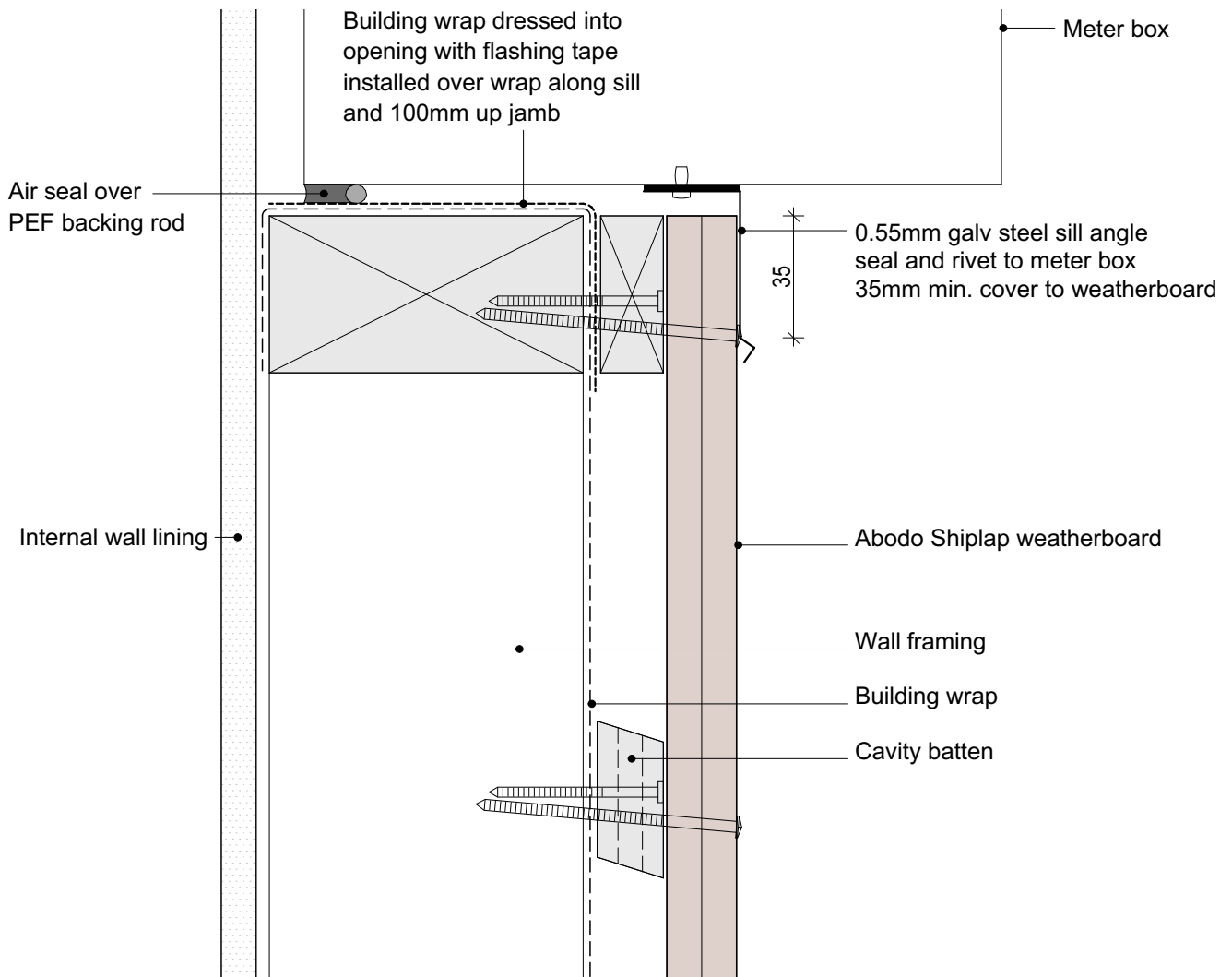
SHEET NUMBER

**V.C.21**

REVISION

**01**

1. Weatherboards must be coated with at least one coat all sides prior to fixing.
2. Fixing points must be pre-drilled minimum 1mm smaller than the fastener.
3. Cut ends and exposed timber must be sealed with an approved coating or end seal.



© Abodo Wood Ltd. 2020  
 info@abodo.co.nz  
 T +64 (9) 249 0100

SHEET TITLE

## Meter Box Sill

PROFILE

Vertical Shiplap Weatherboard

SCALE:

1:2 @ A4

PRINT  
DATE:

01/04/2020

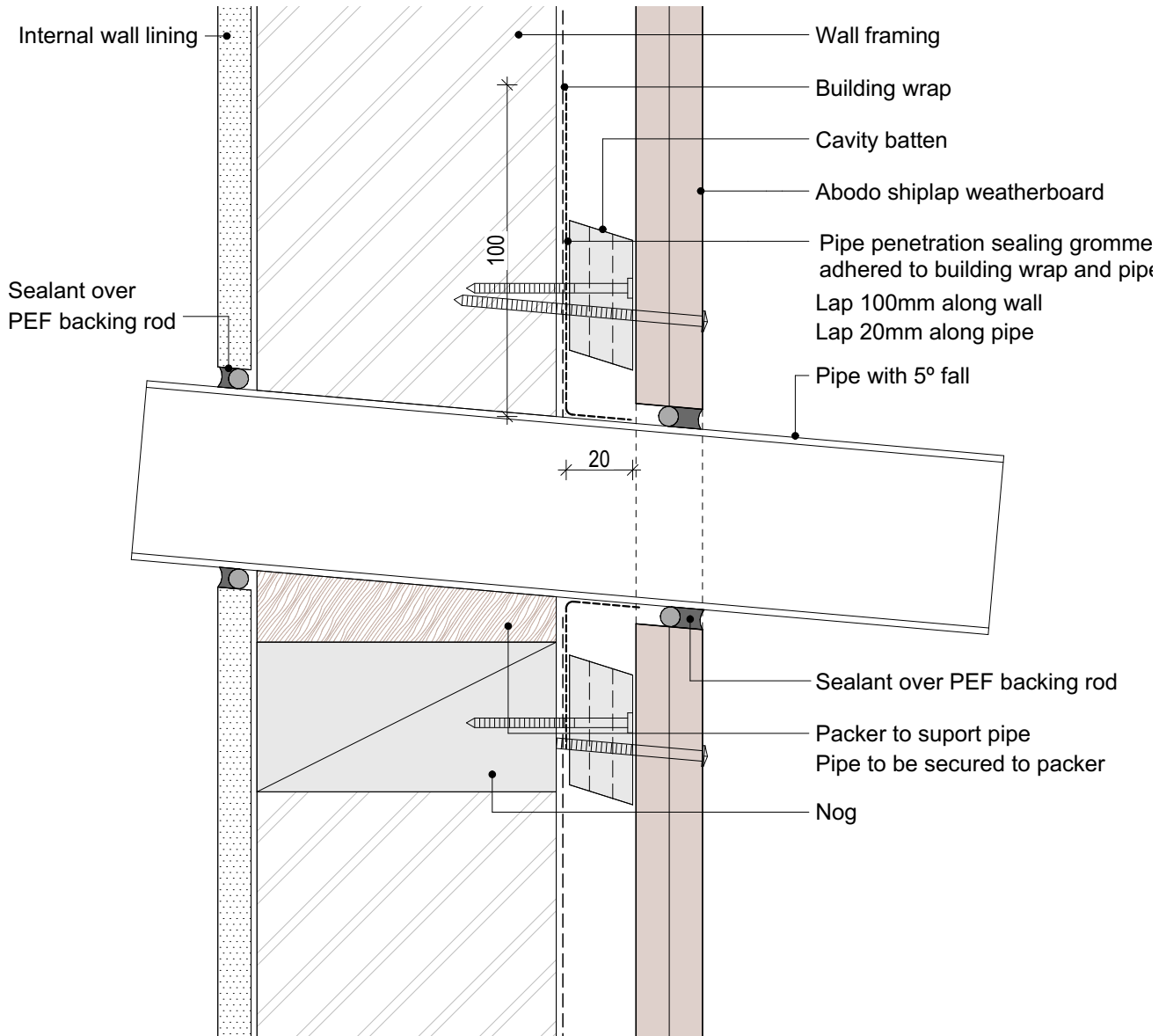
SHEET NUMBER

**V.C.22**

REVISION

**01**

1. Weatherboards must be coated with at least one coat all sides prior to fixing.
2. Fixing points must be pre-drilled minimum 1mm smaller than the fastener.
3. Cut ends and exposed timber must be sealed with an approved coating or end seal.



© Abodo Wood Ltd. 2020  
info@abodo.co.nz  
T +64 (9) 249 0100

Abodo Wood Ltd.  
62 Ascot Road, Mangere,  
Auckland 2022, New Zealand

SHEET TITLE

## Pipe Penetration

PROFILE

Vertical Shiplap Weatherboard

SCALE:

1:2 @ A4

PRINT DATE:

01/04/2020

SHEET NUMBER

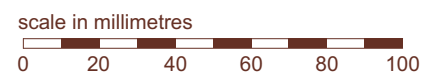
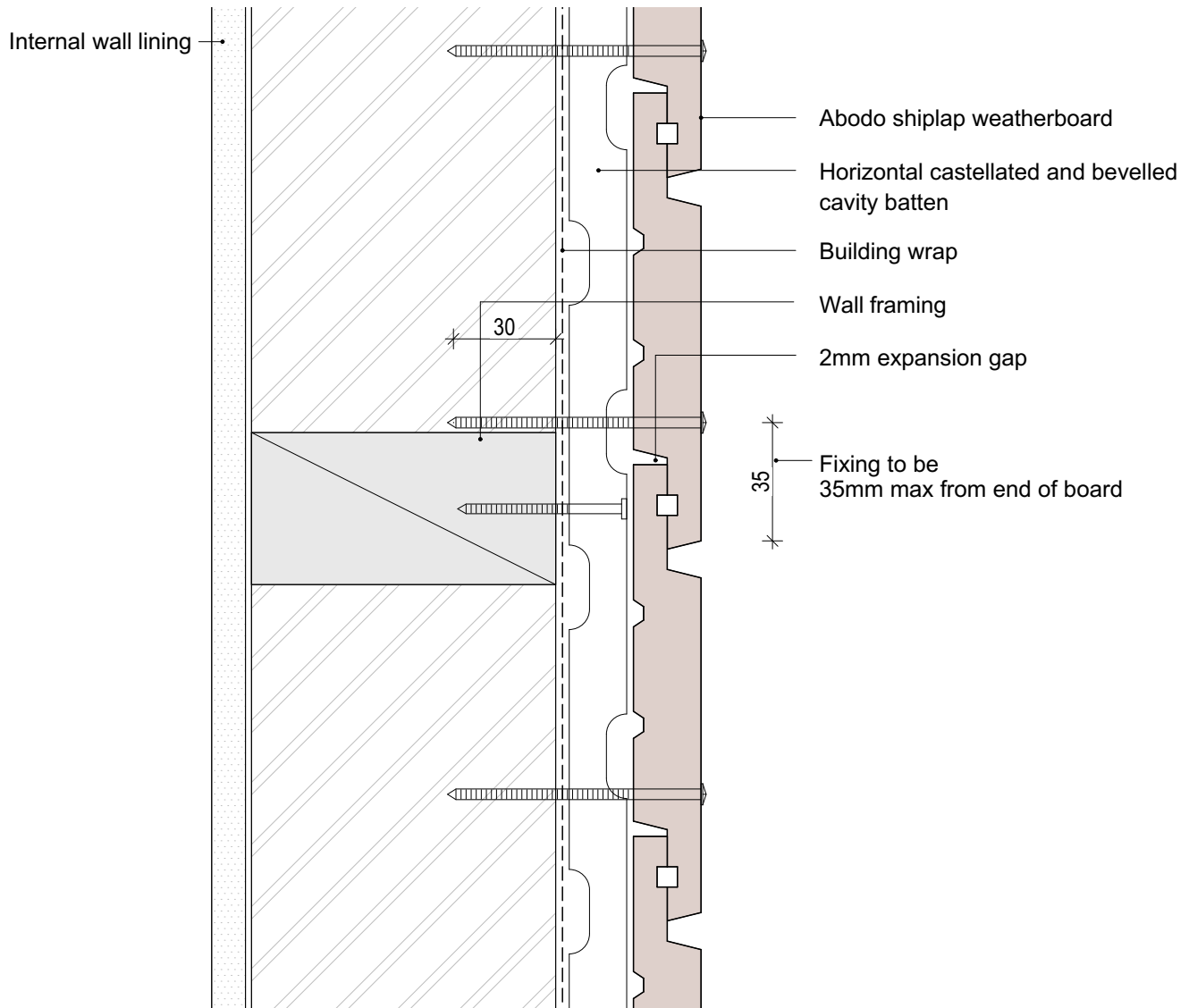
**V.C.23**

REVISION

**01**



1. Weatherboards must be coated with at least one coat all sides prior to fixing.
2. Fixing points must be pre-drilled minimum 1mm smaller than the fastener.
3. Cut ends and exposed timber must be sealed with an approved coating or end seal.



© Abodo Wood Ltd. 2020  
 info@abodo.co.nz  
 T +64 (9) 249 0100

Abodo Wood Ltd.  
 62 Ascot Road, Mangere,  
 Auckland 2022, New Zealand

SHEET TITLE

## Weatherboard Fix - Birdseye

PROFILE

Vertical Shiplap Weatherboard

SCALE:

1:2 @ A4

PRINT DATE:

01/04/2020

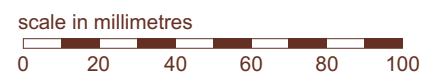
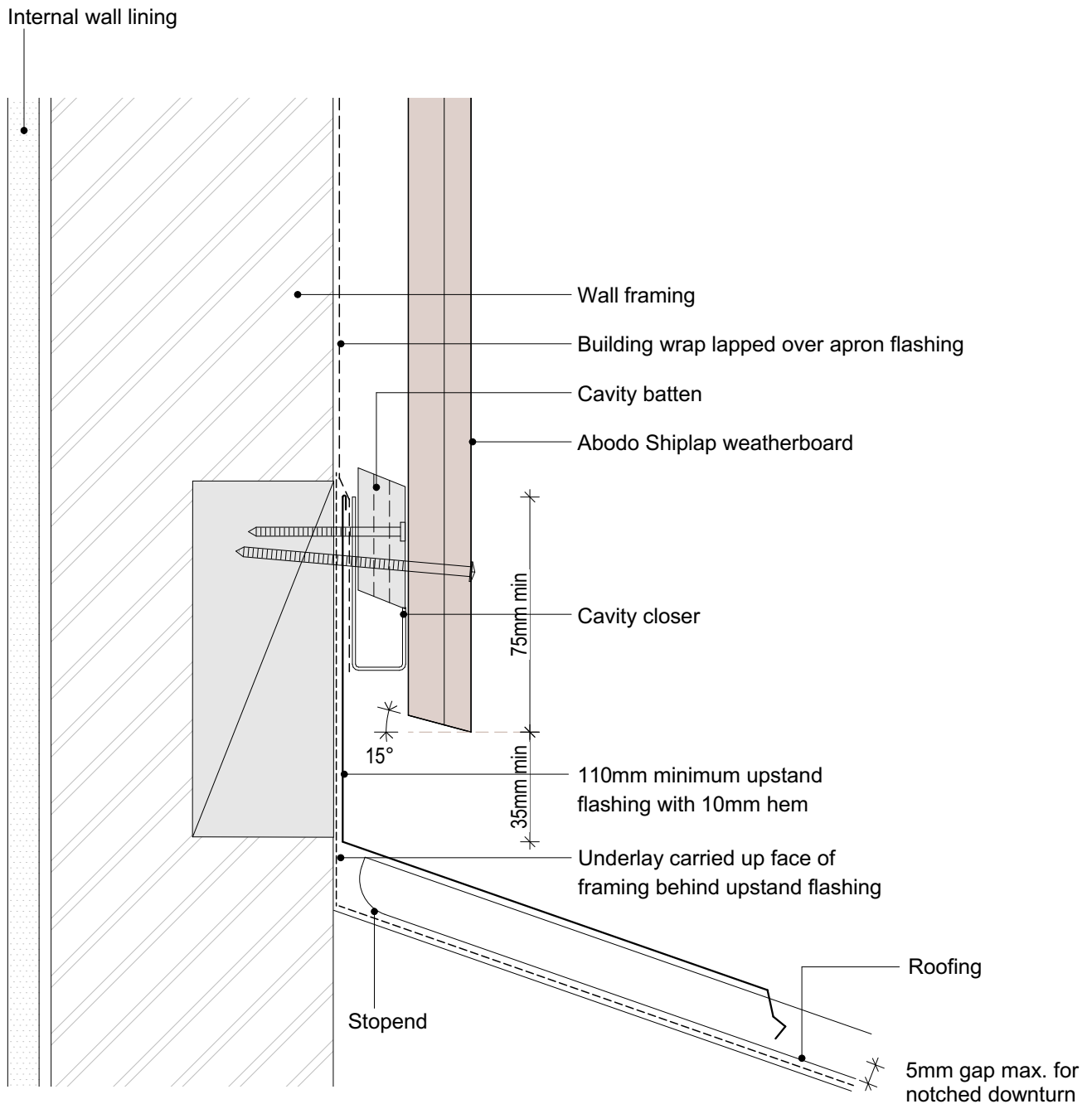
SHEET NUMBER

**V.C.24**

REVISION

**01**

1. Weatherboards must be coated with at least one coat all sides prior to fixing.
2. Fixing points must be pre-drilled minimum 1mm smaller than the fastener.
3. Cut ends and exposed timber must be sealed with an approved coating or end seal.



© Abodo Wood Ltd. 2020  
 info@abodo.co.nz  
 T +64 (9) 249 0100

Abodo Wood Ltd.  
 62 Ascot Road, Mangere,  
 Auckland 2022, New Zealand

SHEET TITLE

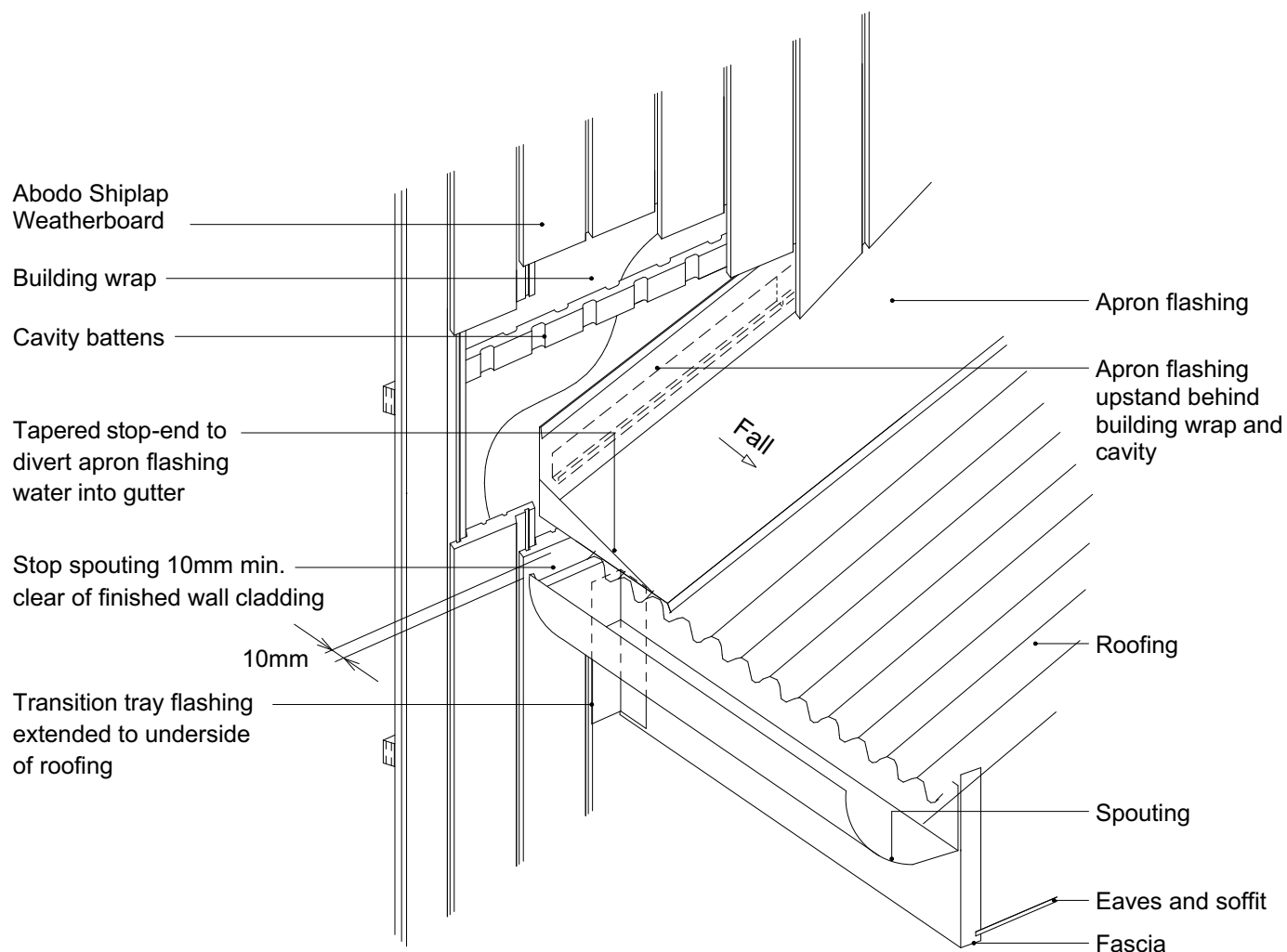
## Apron Flahing

PROFILE

Vertical Shiplap Weatherboard

SCALE: 1:2 @ A4  
 PRINT DATE: 01/04/2020

SHEET NUMBER REVISION  
**V.C.25 01**



© Abodo Wood Ltd. 2020

info@abodo.co.nz  
T +64 (9) 249 0100

Abodo Wood Ltd.  
62 Ascot Road, Mangere,  
Auckland 2022, New Zealand

SHEET TITLE

## Roof Kick-out Flashing Cavity

PROFILE

Vertical Shiplap Weatherboard

SCALE:

NTS @ A4

PRINT  
DATE:

31/05/2021

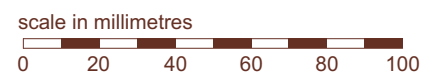
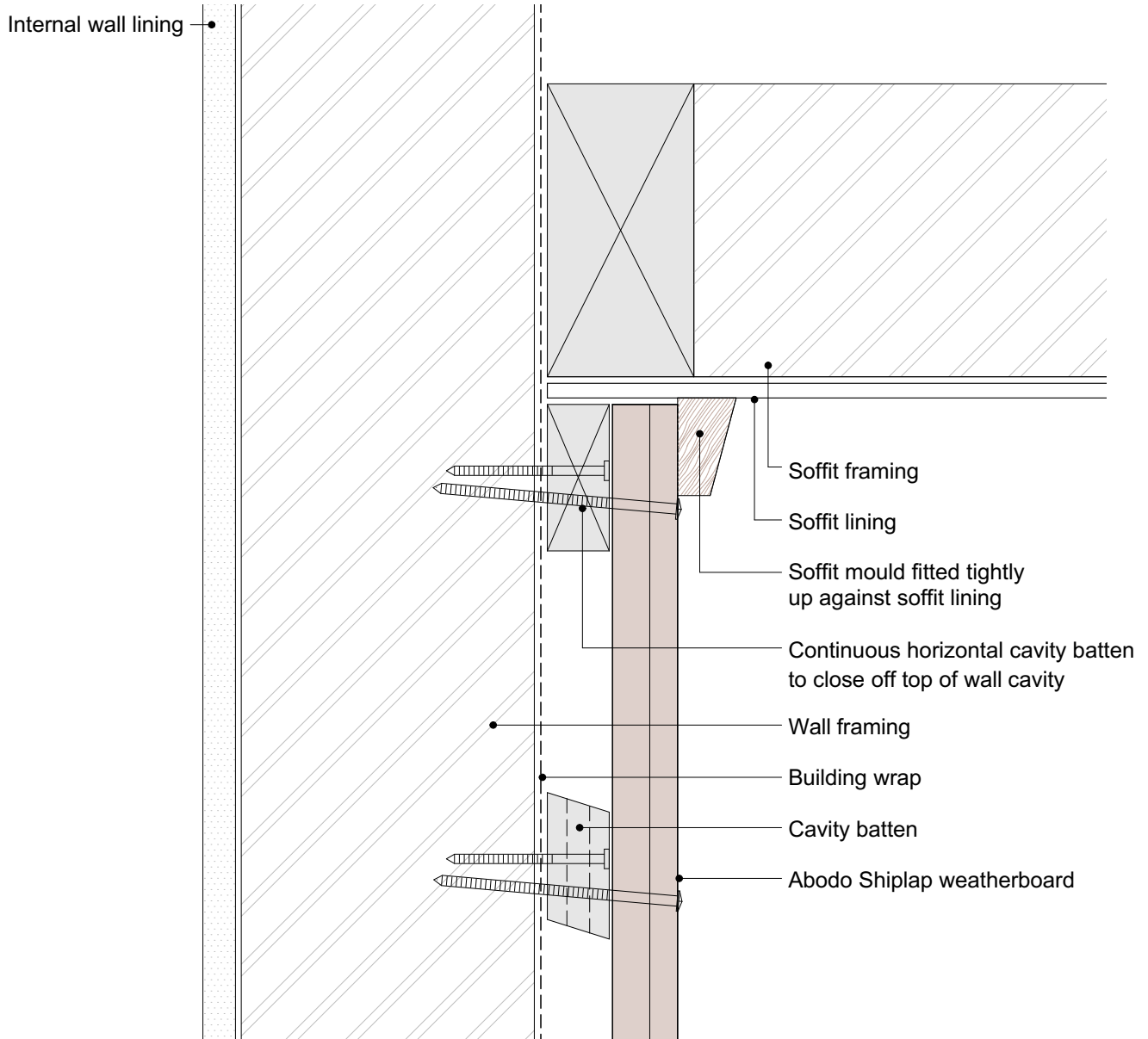
SHEET NUMBER

**V.C.26**

REVISION

**01**

1. Weatherboards must be coated with at least one coat all sides prior to fixing.
2. Fixing points must be pre-drilled minimum 1mm smaller than the fastener.
3. Cut ends and exposed timber must be sealed with an approved coating or end seal.



© Abodo Wood Ltd. 2020  
info@abodo.co.nz  
T +64 (9) 249 0100

SHEET TITLE

Top Of Wall - Flat Soffit

PROFILE

Vertical Shiplap Weatherboard

SCALE: 1:2 @ A4

PRINT DATE: 01/04/2020

SHEET NUMBER

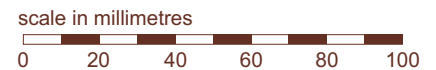
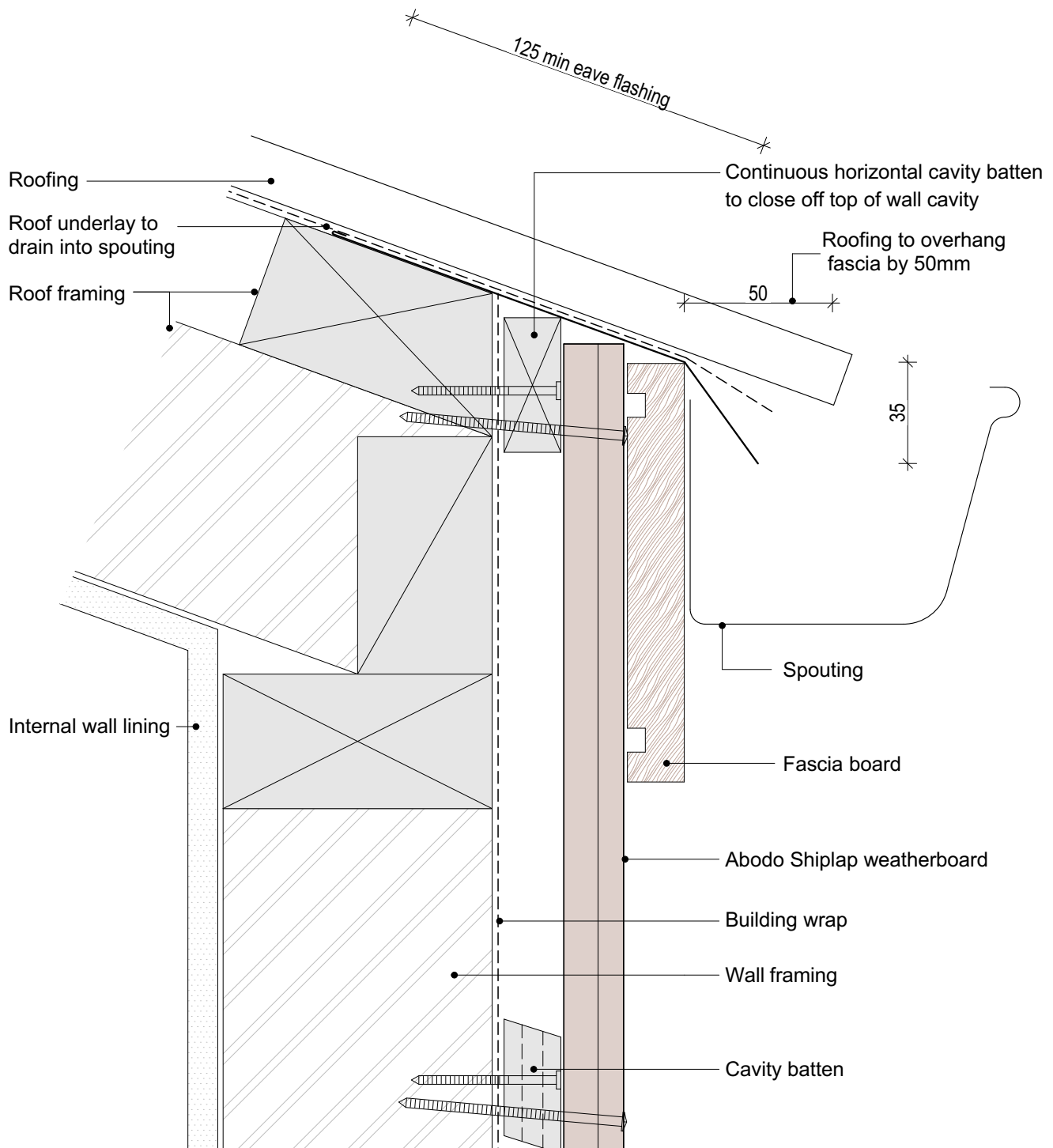
**V.C.27**

REVISION

**01**

Abodo Wood Ltd.  
62 Ascot Road, Mangere,  
Auckland 2022, New Zealand

1. Weatherboards must be coated with at least one coat all sides prior to fixing.
2. Fixing points must be pre-drilled minimum 1mm smaller than the fastener.
3. Cut ends and exposed timber must be sealed with an approved coating or end seal.



© Abodo Wood Ltd. 2020  
 info@abodo.co.nz  
 T +64 (9) 249 0100

Abodo Wood Ltd.  
 62 Ascot Road, Mangere,  
 Auckland 2022, New Zealand

SHEET TITLE

Top Of Wall - No Soffit

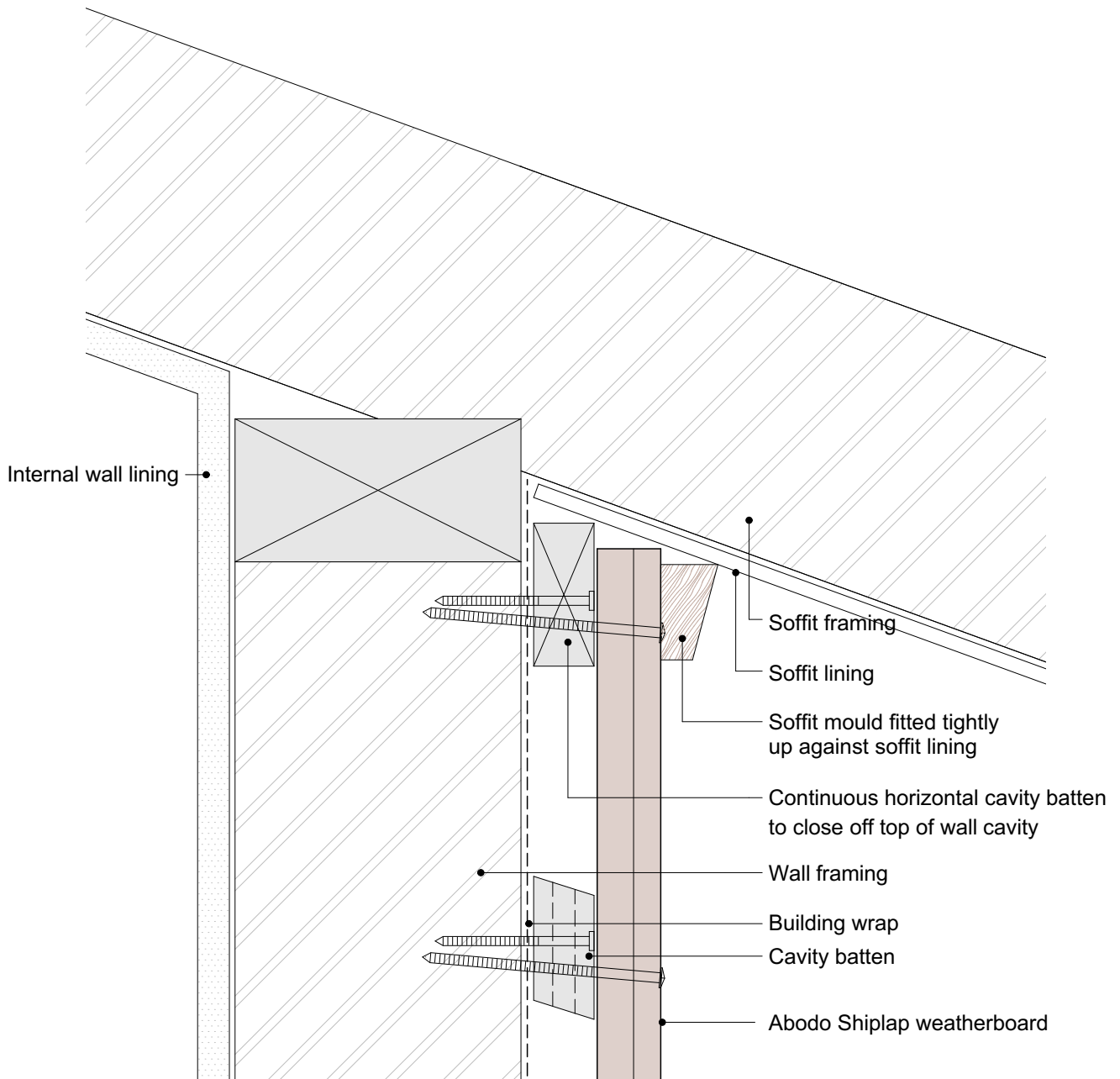
PROFILE

Vertical Shiplap Weatherboard

SCALE: 1:2 @ A4  
 PRINT DATE: 01/04/2020

SHEET NUMBER REVISION  
**V.C.28 01**

1. Weatherboards must be coated with at least one coat all sides prior to fixing.
2. Fixing points must be pre-drilled minimum 1mm smaller than the fastener.
3. Cut ends and exposed timber must be sealed with an approved coating or end seal.



scale in millimetres

0 20 40 60 80 100



© Abodo Wood Ltd. 2020  
info@abodo.co.nz  
T +64 (9) 249 0100

Abodo Wood Ltd.  
62 Ascot Road, Mangere,  
Auckland 2022, New Zealand

SHEET TITLE

Top Of Wall - Slopping Soffit

PROFILE

Vertical Shiplap Weatherboard

SCALE:

1:2 @ A4

PRINT DATE:

01/04/2020

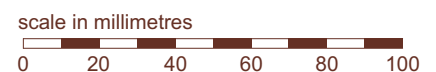
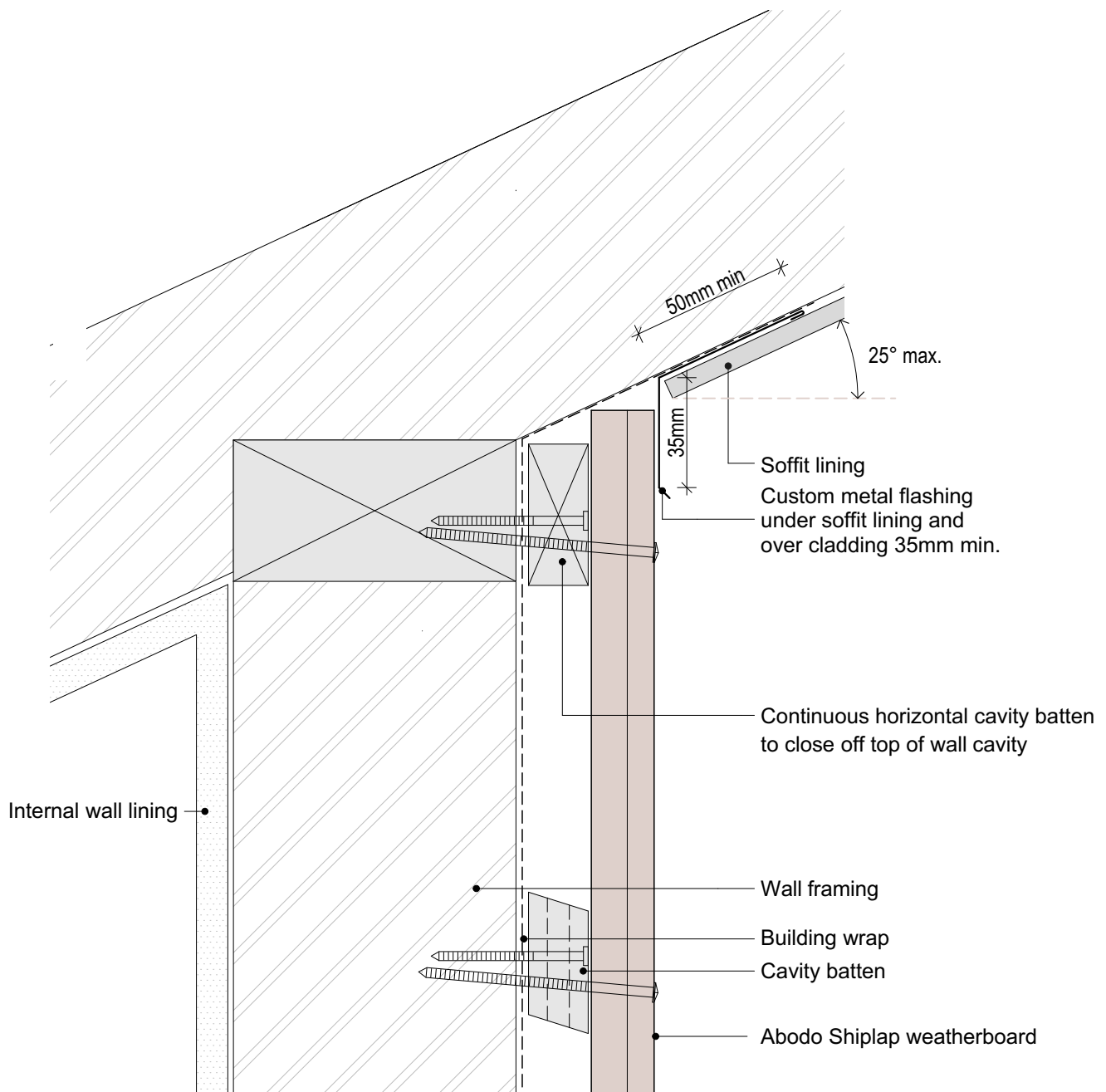
SHEET NUMBER

V.C.29

REVISION

01

1. Weatherboards must be coated with at least one coat all sides prior to fixing.
2. Fixing points must be pre-drilled minimum 1mm smaller than the fastener.
3. Cut ends and exposed timber must be sealed with an approved coating or end seal.



© Abodo Wood Ltd. 2020  
info@abodo.co.nz  
T +64 (9) 249 0100

Abodo Wood Ltd.  
62 Ascot Road, Mangere,  
Auckland 2022, New Zealand

SHEET TITLE

## Top Of Wall- Raking Soffit

PROFILE

Vertical Shiplap Weatherboard

SCALE:  
1:2 @ A4

PRINT  
DATE: 01/04/2020

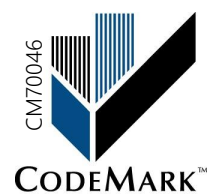
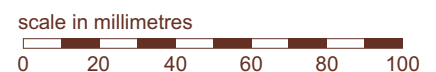
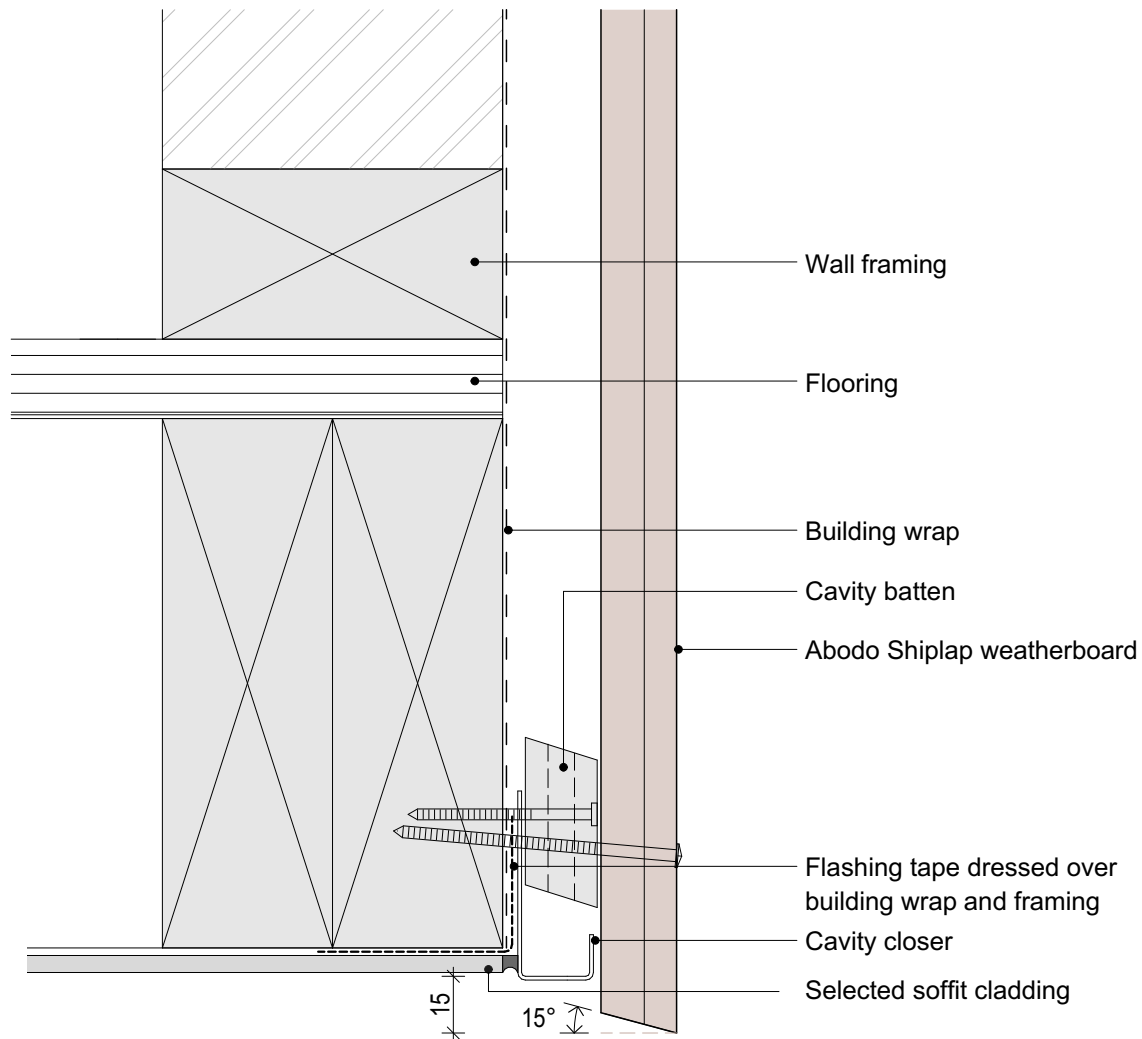
SHEET NUMBER

**V.C.30**

REVISION

**01**

1. Weatherboards must be coated with at least one coat all sides prior to fixing.
2. Fixing points must be pre-drilled minimum 1mm smaller than the fastener.
3. Cut ends and exposed timber must be sealed with an approved coating or end seal.



© Abodo Wood Ltd. 2020  
info@abodo.co.nz  
T +64 (9) 249 0100

Abodo Wood Ltd.  
62 Ascot Road, Mangere,  
Auckland 2022, New Zealand

SHEET TITLE

Soffit

PROFILE

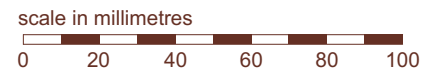
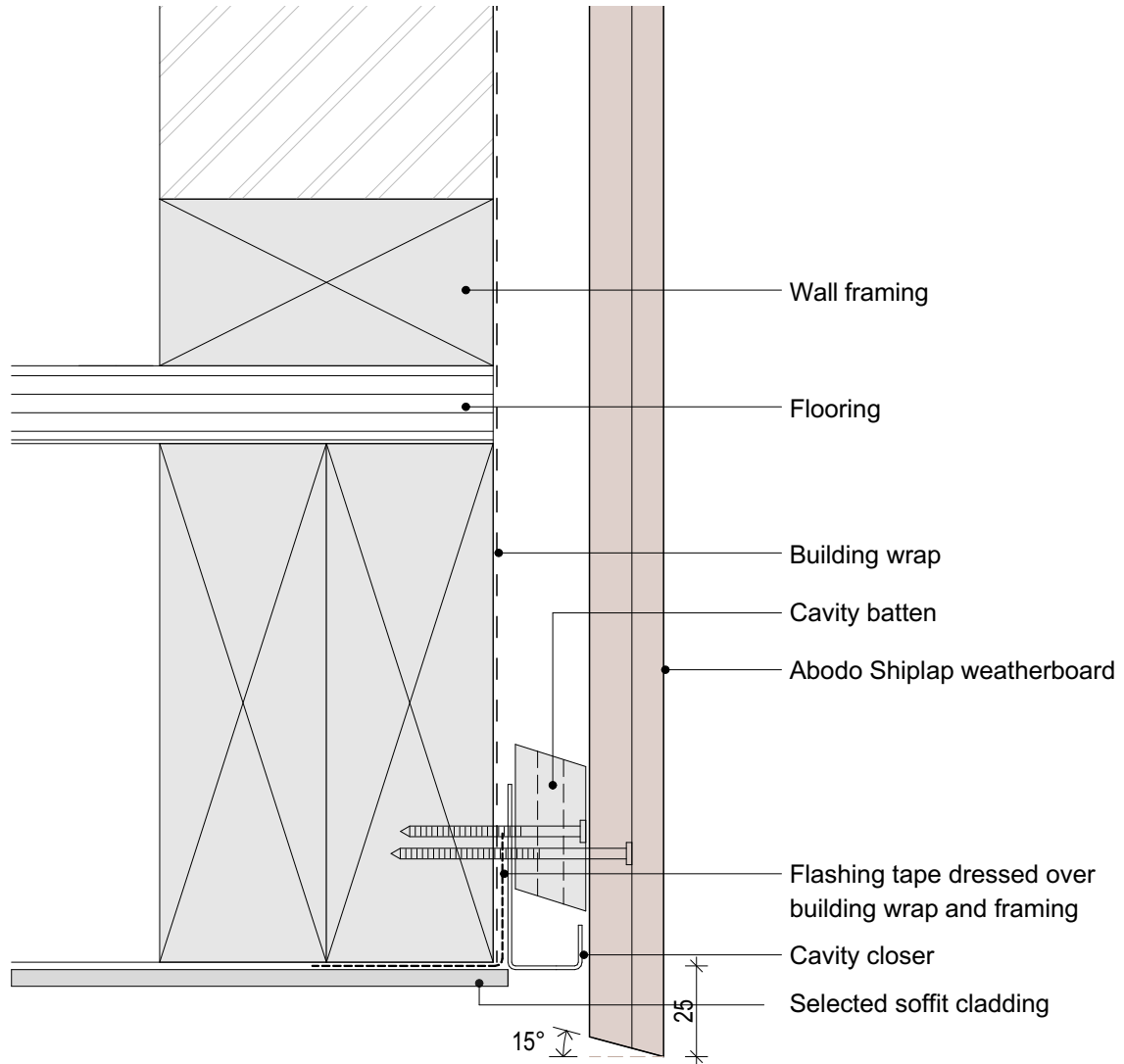
Vertical Shiplap Weatherboard

SCALE: 1:2 @ A4  
PRINT DATE: 01/04/2020

SHEET NUMBER REVISION  
**V.C.31** **01**



1. Weatherboards must be coated with at least one coat all sides prior to fixing.
2. Fixing points must be pre-drilled minimum 1mm smaller than the fastener.
3. Cut ends and exposed timber must be sealed with an approved coating or end seal.



© Abodo Wood Ltd. 2020  
info@abodo.co.nz  
T +64 (9) 249 0100

Abodo Wood Ltd.  
62 Ascot Road, Mangere,  
Auckland 2022, New Zealand

SHEET TITLE

## Alternative Soffit 01

PROFILE

Vertical Shiplap Weatherboard

SCALE:

1:2 @ A4

PRINT  
DATE:

01/04/2020

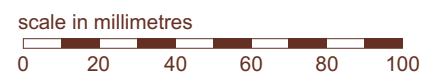
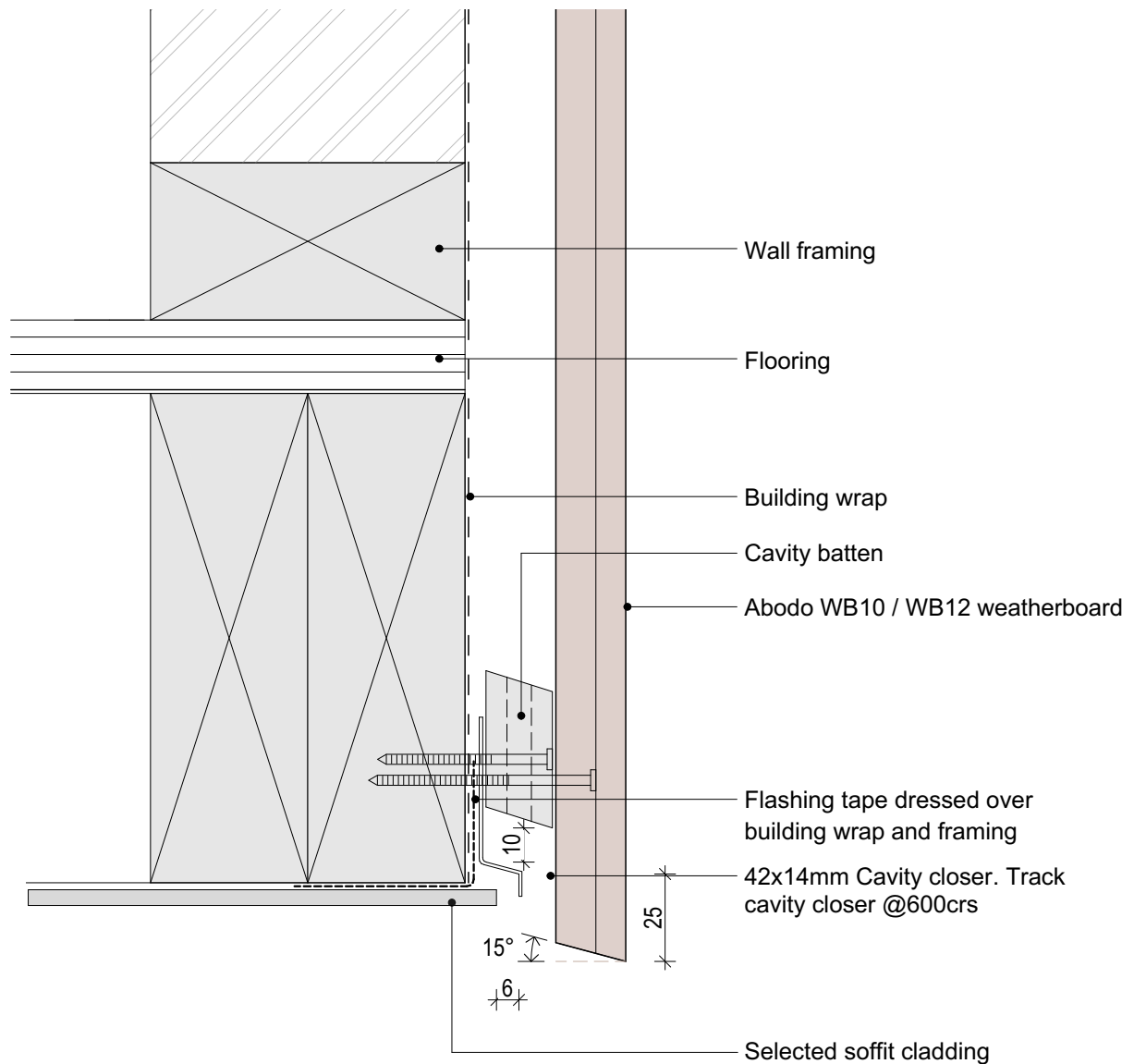
SHEET NUMBER

**V.C.32**

REVISION

**01**

1. Weatherboards must be coated with at least one coat all sides prior to fixing.
2. Fixing points must be pre-drilled minimum 1mm smaller than the fastener.
3. Cut ends and exposed timber must be sealed with an approved coating or end seal.



© Abodo Wood Ltd. 2020  
 info@abodo.co.nz  
 T +64 (9) 249 0100

Abodo Wood Ltd.  
 62 Ascot Road, Mangere,  
 Auckland 2022, New Zealand

SHEET TITLE

## Alternative Soffit 02

PROFILE

Vertical Shiplap Weatherboard

SCALE:

1:2 @ A4

PRINT DATE:

01/04/2020

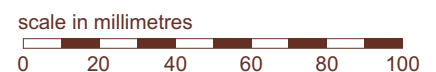
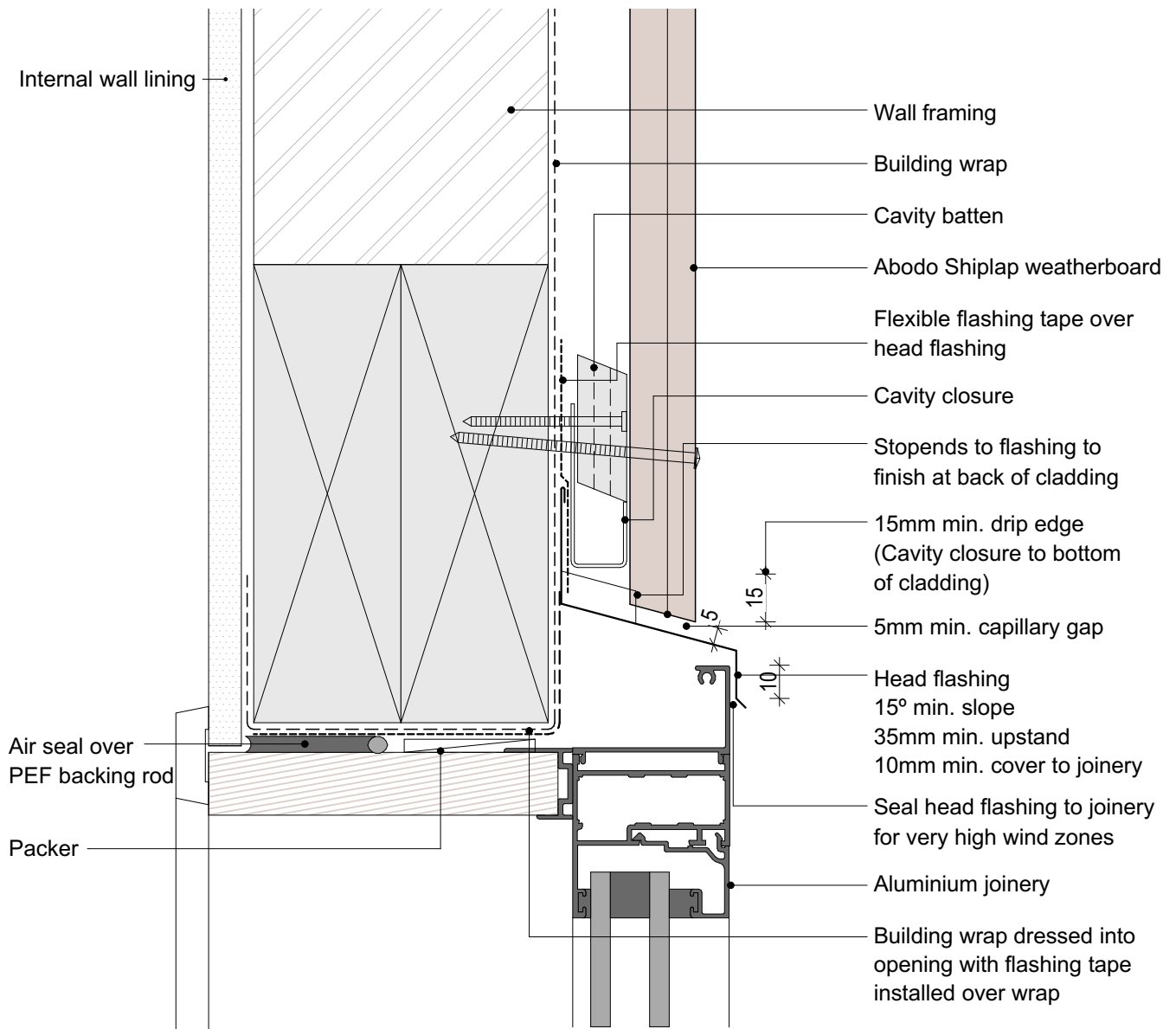
SHEET NUMBER

**V.C.33**

REVISION

**01**

1. Weatherboards must be coated with at least one coat all sides prior to fixing.
2. Fixing points must be pre-drilled minimum 1mm smaller than the fastener.
3. Cut ends and exposed timber must be sealed with an approved coating or end seal.



© Abodo Wood Ltd. 2020  
 info@abodo.co.nz  
 T +64 (9) 249 0100

Abodo Wood Ltd.  
 62 Ascot Road, Mangere,  
 Auckland 2022, New Zealand

SHEET TITLE

Window Head

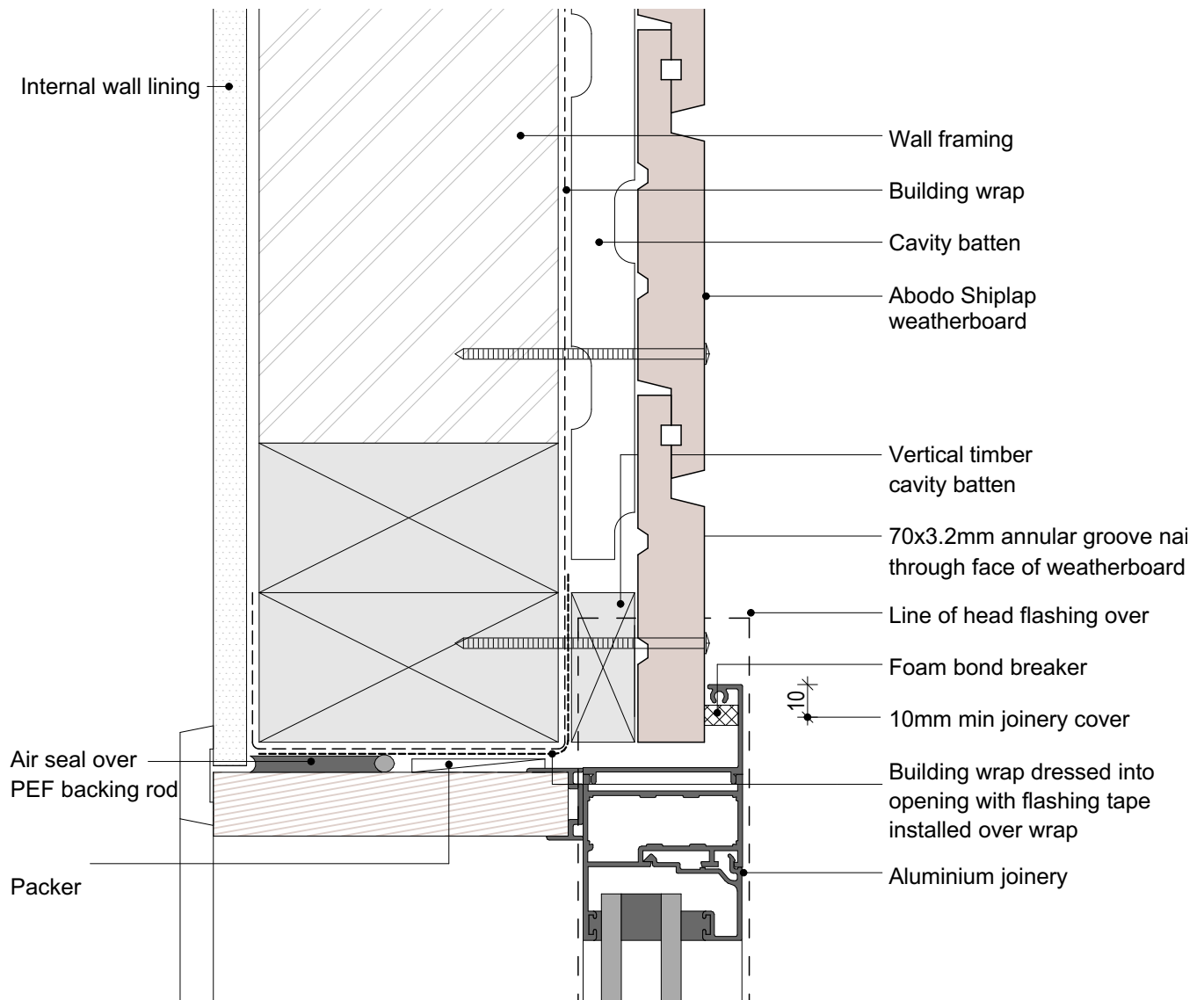
PROFILE

Vertical Shiplap Weatherboard

SCALE: 1:2 @ A4  
 PRINT DATE: 01/04/2020

SHEET NUMBER REVISION  
**V.C.34 01**

1. Weatherboards must be coated with at least one coat all sides prior to fixing.
2. Fixing points must be pre-drilled minimum 1mm smaller than the fastener.
3. Cut ends and exposed timber must be sealed with an approved coating or end seal.



scale in millimetres

0 20 40 60 80 100



© Abodo Wood Ltd. 2020  
info@abodo.co.nz  
T +64 (9) 249 0100

SHEET TITLE

Window Jamb

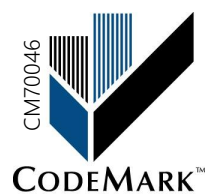
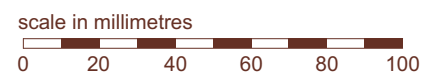
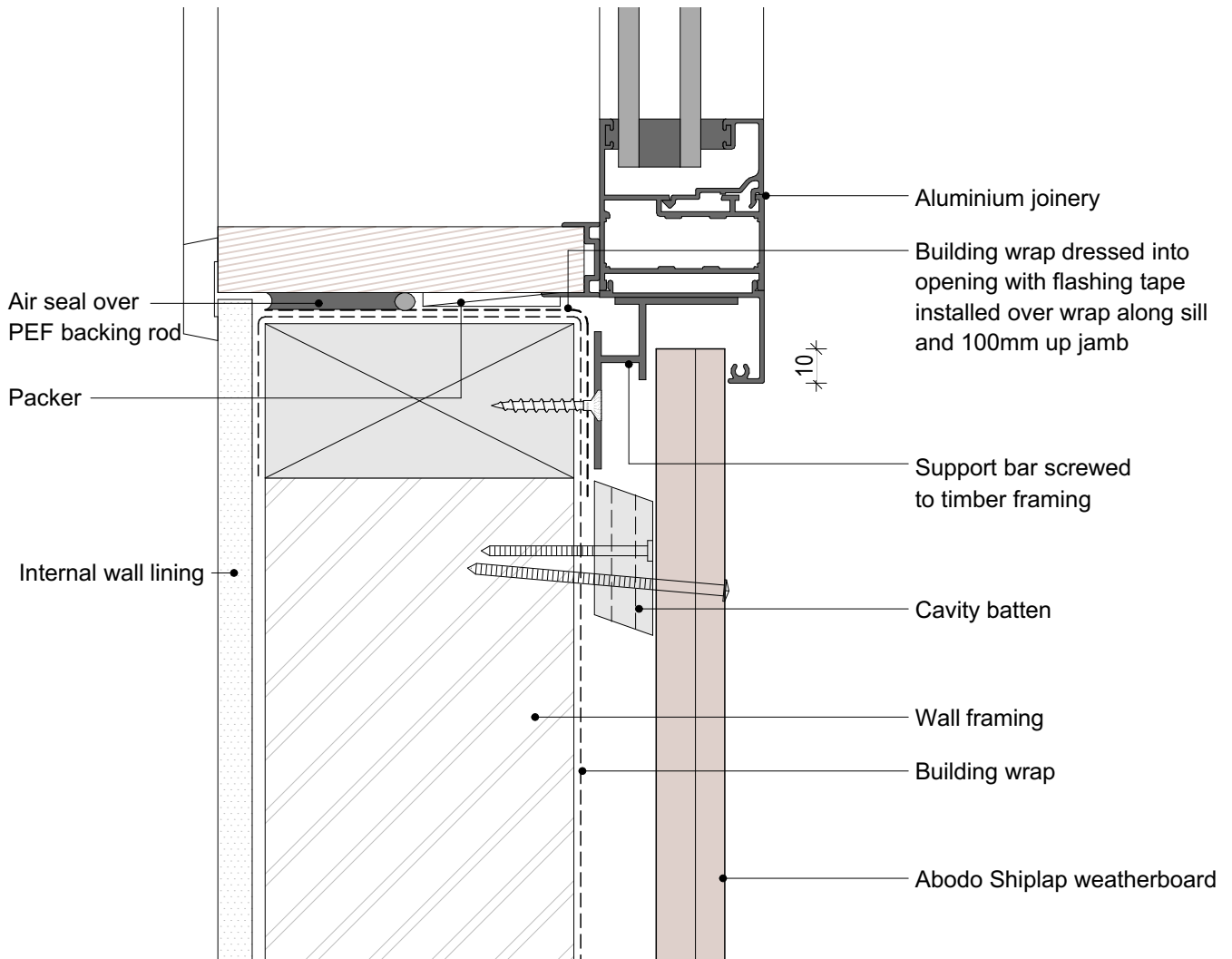
PROFILE

Vertical Shiplap Weatherboard

SCALE: 1:2 @ A4  
PRINT DATE: 01/04/2020

SHEET NUMBER REVISION  
**V.C.35 01**

1. Weatherboards must be coated with at least one coat all sides prior to fixing.
2. Fixing points must be pre-drilled minimum 1mm smaller than the fastener.
3. Cut ends and exposed timber must be sealed with an approved coating or end seal.



© Abodo Wood Ltd. 2020  
 info@abodo.co.nz  
 T +64 (9) 249 0100

Abodo Wood Ltd.  
 62 Ascot Road, Mangere,  
 Auckland 2022, New Zealand

SHEET TITLE

Window Sill

PROFILE

Vertical Shiplap Weatherboard

SCALE:

1:2 @ A4

PRINT DATE:

01/04/2020

SHEET NUMBER

V.C.36

REVISION

01