

Vulcan WB10 Horizontal Weatherboard

Sheet Index

Sheet No: Revision: Sheet Name:

H.H.1	01	Vertical Batten Fix
H.H.2	01	Base of wall - concrete floor
H.H.3	01	Base of wall - Timber floor
H.H.4	01	Inter-Storey Cavity Junction
H.H.5	01	Face fixed - Packer Cavity Batten - Stained
H.H.6	01	Secret Fixing - Packer Cavity Batten Stained
H.H.7	01	Secret Fixing - Structural Cavity Batten - 20x45
H.H.8	01	Secret Fixing - Structural 45x45 Cavity Batten
H.H.9	01	External 90° Corner - Boxed
H.H.10	01	External 135° Corner - Boxed
H.H.11	01	External 90° Corner - AW46 Moulding
H.H.12	01	External 90° corner-AW46 Moulding
H.H.13	01	Internal 90° Corner - W Flashing
H.H.14	01	Internal 135° Corner - W Flashing
H.H.15	01	Internal 90° Corner - AW41 Moulding
H.H.16	01	AW46 Internal 90° Corner
H.H.17	01	Enclosed Deck - Concrete Substrate
H.H.18	01	Enclosed Deck - Timber Substrate
H.H.19	01	Parapet Balustrade Cap Flashing
H.H.20	01	Parapet Balustrade Intersection With Wall - Butted
H.H.21	01	Parapet Balustrade Intersection With Wall - Flashing
H.H.22	01	Meter Box Head
H.H.23	01	Meter Box Jamb
H.H.24	01	Meter Box Sill
H.H.25	01	Pipe Penetration
H.H.26	01	Weatherboard Fix - Birdseye
H.H.27	01	Apron Flahing
H.H.28	01	Roof Kick-out Flashing
H.H.29	01	Top Of Wall - Flat Soffit
H.H.30	01	Top Of Wall - No Soffit
H.H.31	01	Top Of Wall - Slopping Soffit
H.H.32	01	Top Of Wall - Raking Soffit
H.H.33	01	Soffit Detail
H.H.34	01	Window Head
H.H.35	01	Window Jamb
H.H.36	01	Window Sill
H.H.37	01	Window Jamb - Option 2



© Abodo Wood Ltd. 2020
info@abodo.co.nz
T +64 (9) 249 0100

SHEET TITLE

Detail INDEX

PROFILE

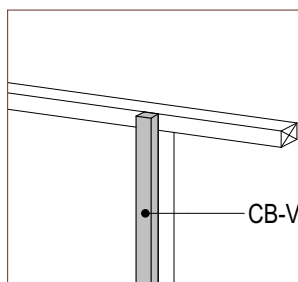
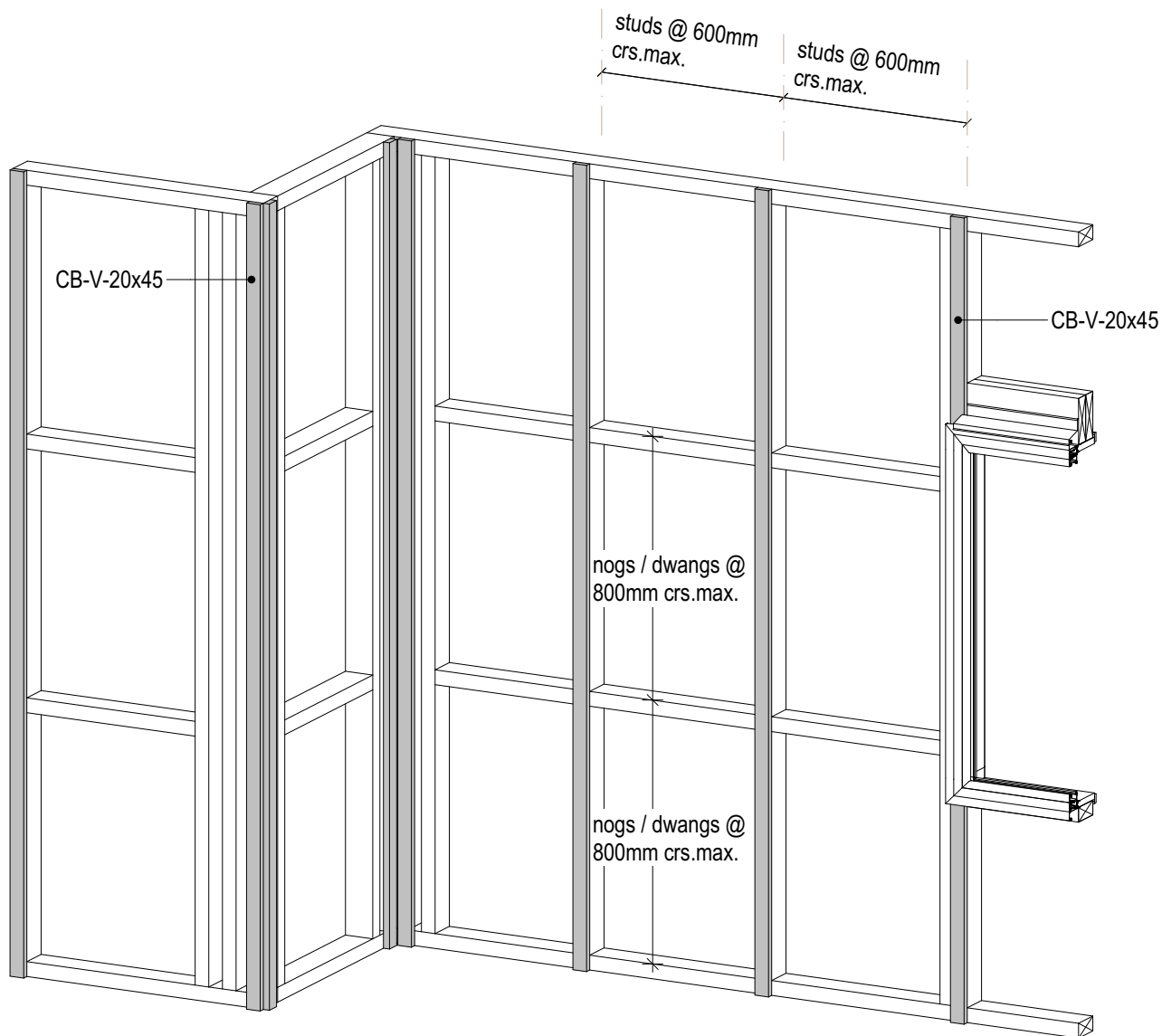
Vulcan WB10 Horizontal Weatherboard

SCALE: 1:2 @ A4
PRINT DATE: 01/04/2020

SHEET NUMBER

REVISION

01



Structural Batten Fix

Use CB-H-45x45
Fixed at max. 600mm centres with
4.0x90mm S.S. flat head nails or
8g x 75mm S.S. screws staggered
12mm of the centre line.



© Abodo Wood Ltd. 2020
info@abodo.co.nz
T +64 (9) 249 0100

SHEET TITLE

Vertical Batten Fix

PROFILE

Vulcan WB10 Horizontal Weatherboard

SCALE:

1:2 @ A4

PRINT
DATE:

01/04/2020

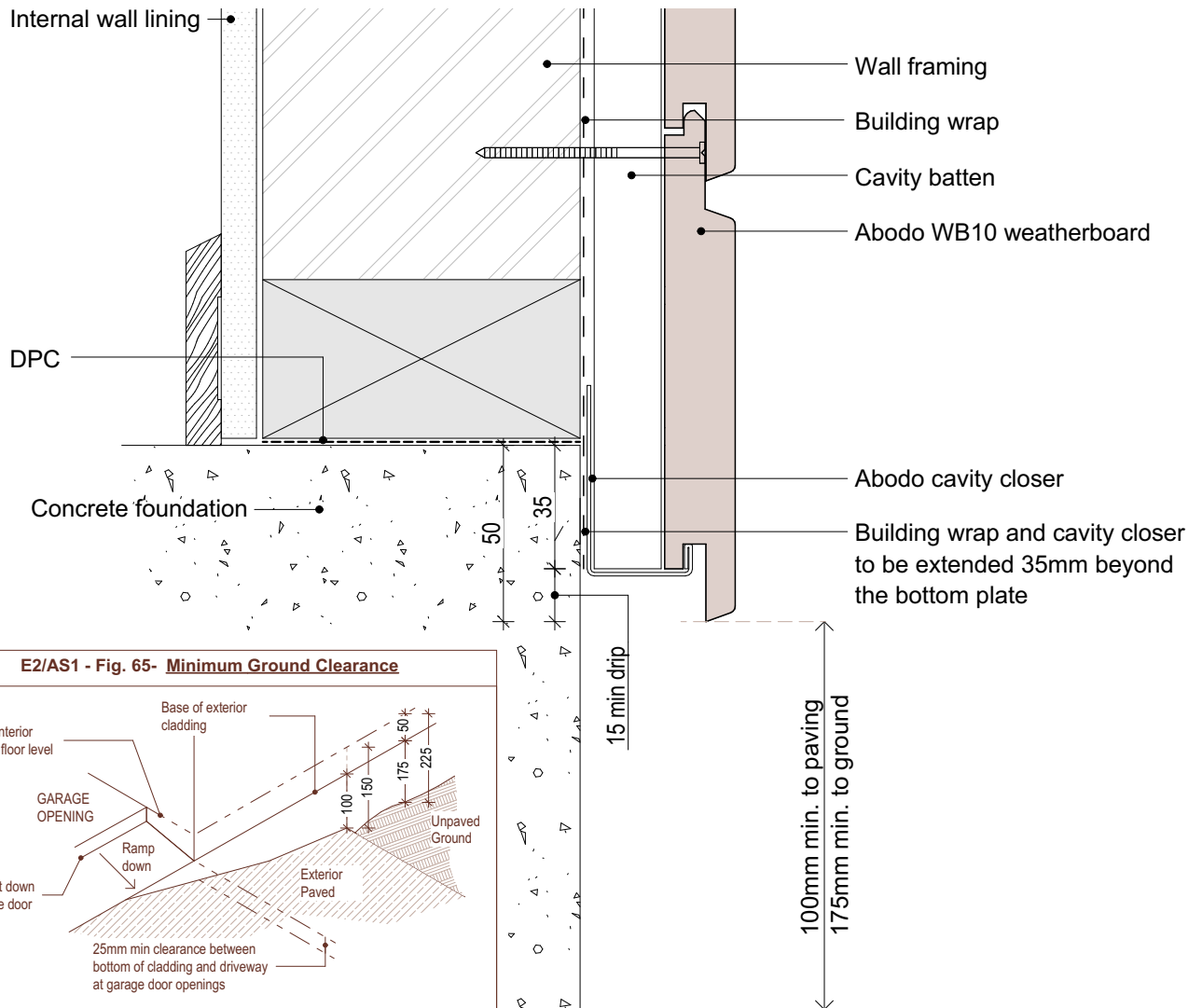
SHEET NUMBER

H.H.1

REVISION

01

1. Weatherboards must be coated with at least one coat all sides prior to fixing.
2. Fixing points must be pre-drilled minimum 1mm smaller than the fastener.
3. Cut ends and exposed timber must be sealed with an approved coating or end seal.



scale in millimetres

0 20 40 60 80 100



© Abodo Wood Ltd. 2020
info@abodo.co.nz
T +64 (9) 249 0100

SHEET TITLE

Base of wall - concrete floor

PROFILE

Vulcan WB10 Horizontal Weatherboard

SCALE:

1:2 @ A4

PRINT DATE:

01/04/2020

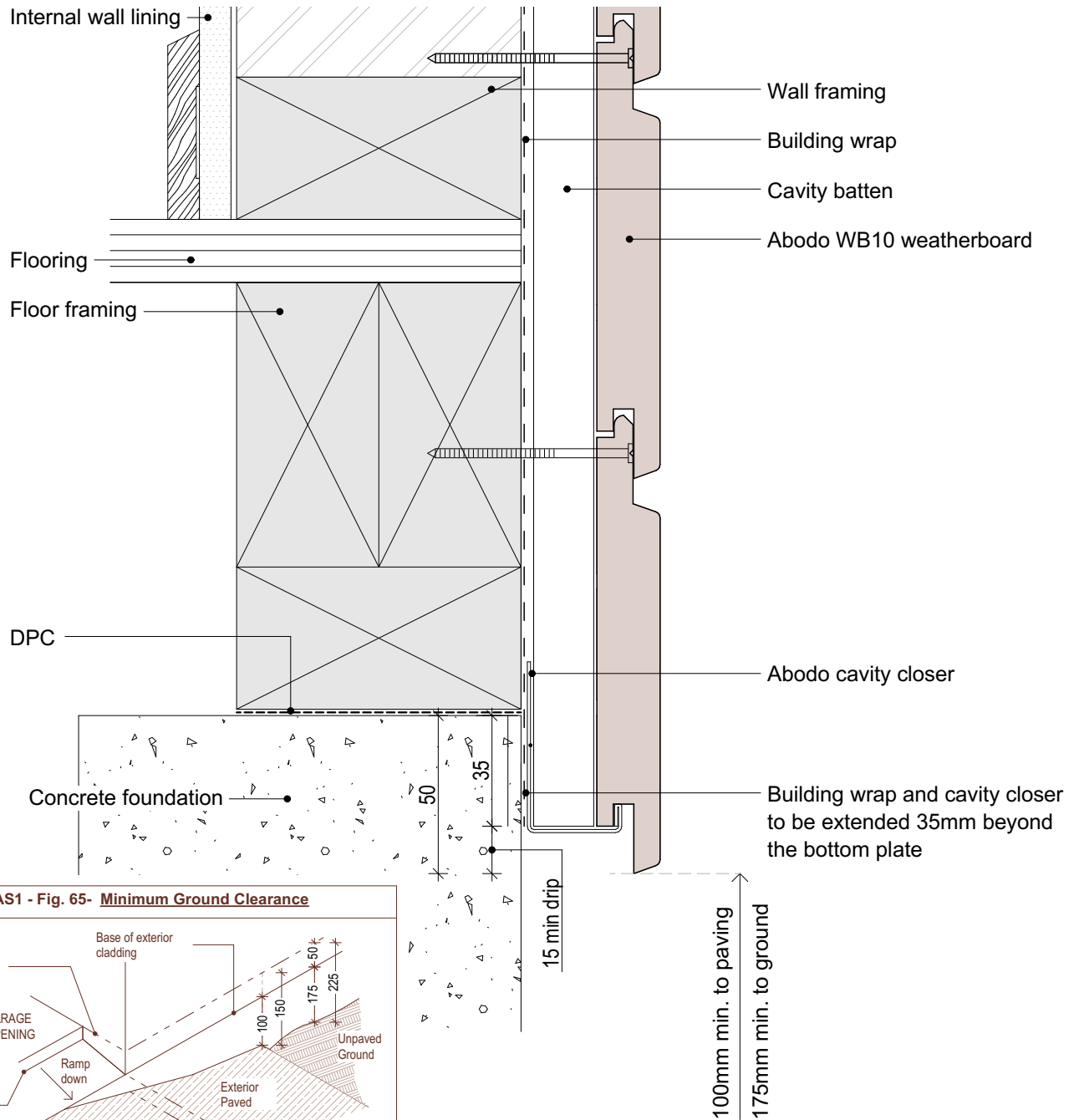
SHEET NUMBER

H.H.2

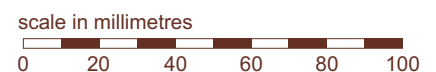
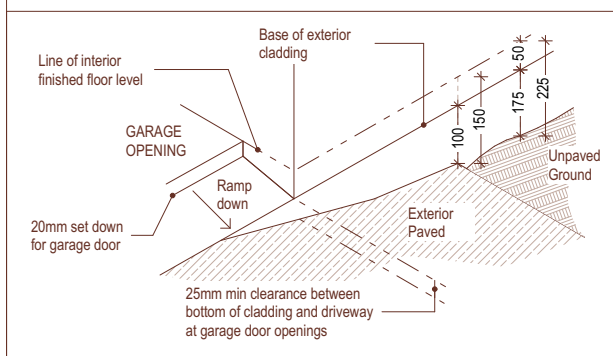
REVISION

01

1. Weatherboards must be coated with at least one coat all sides prior to fixing.
2. Fixing points must be pre-drilled minimum 1mm smaller than the fastener.
3. Cut ends and exposed timber must be sealed with an approved coating or end seal.



E2/AS1 - Fig. 65- Minimum Ground Clearance



© Abodo Wood Ltd. 2020
info@abodo.co.nz
T +64 (9) 249 0100

SHEET TITLE

Base of wall - Timber floor

PROFILE

Vulcan WB10 Horizontal Weatherboard

SCALE: 1:2 @ A4

PRINT DATE: 01/04/2020

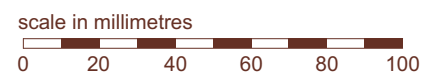
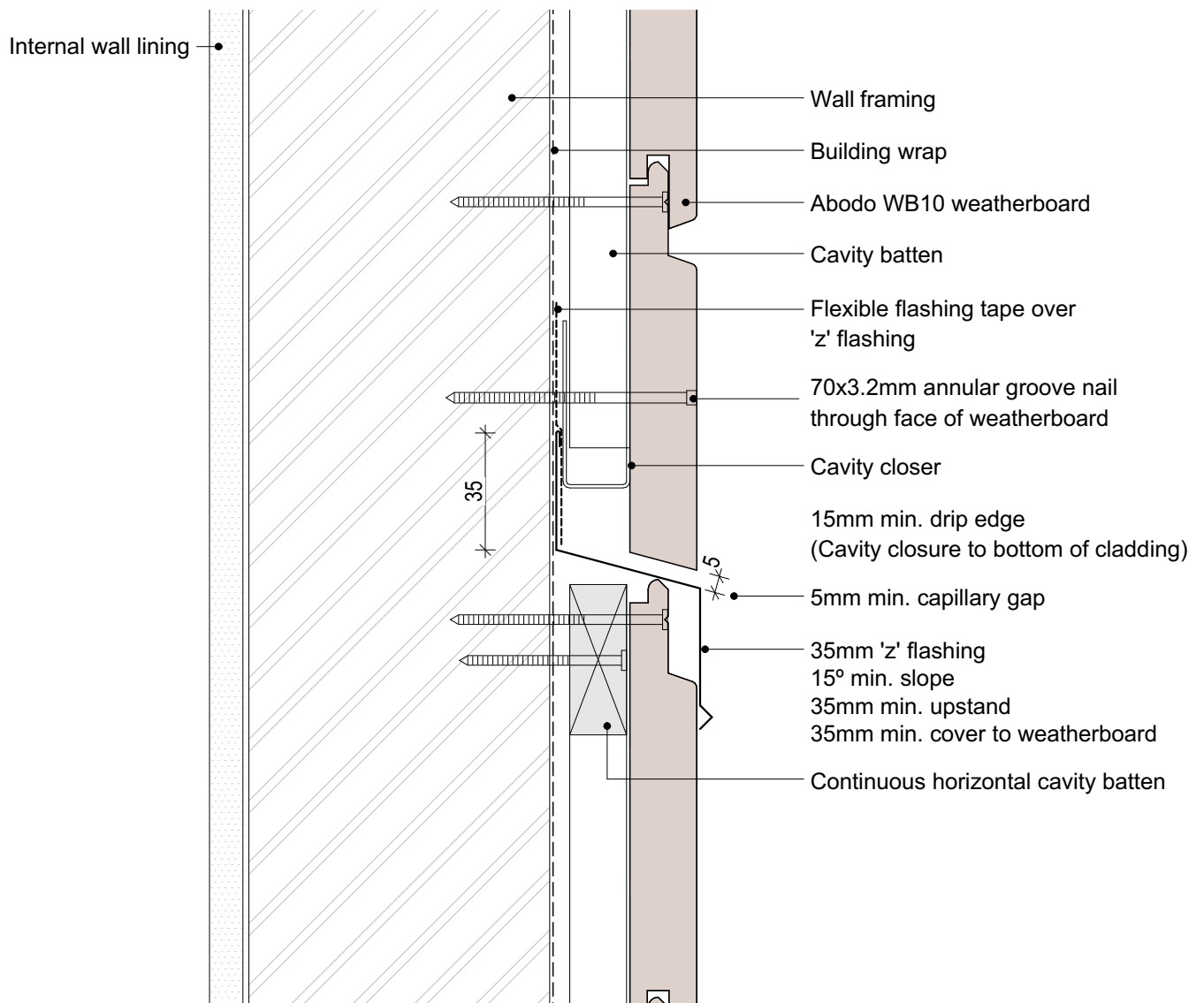
SHEET NUMBER

H.H.3

REVISION

01

1. Weatherboards must be coated with at least one coat all sides prior to fixing.
2. Fixing points must be pre-drilled minimum 1mm smaller than the fastener.
3. Cut ends and exposed timber must be sealed with an approved coating or end seal.



© Abodo Wood Ltd. 2020
info@abodo.co.nz
T +64 (9) 249 0100

SHEET TITLE

Inter-Storey Cavity Junction

PROFILE

Vulcan WB10 Horizontal Weatherboard

SCALE: 1:2 @ A4

PRINT DATE: 01/04/2020

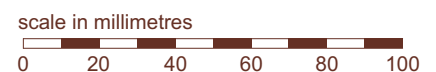
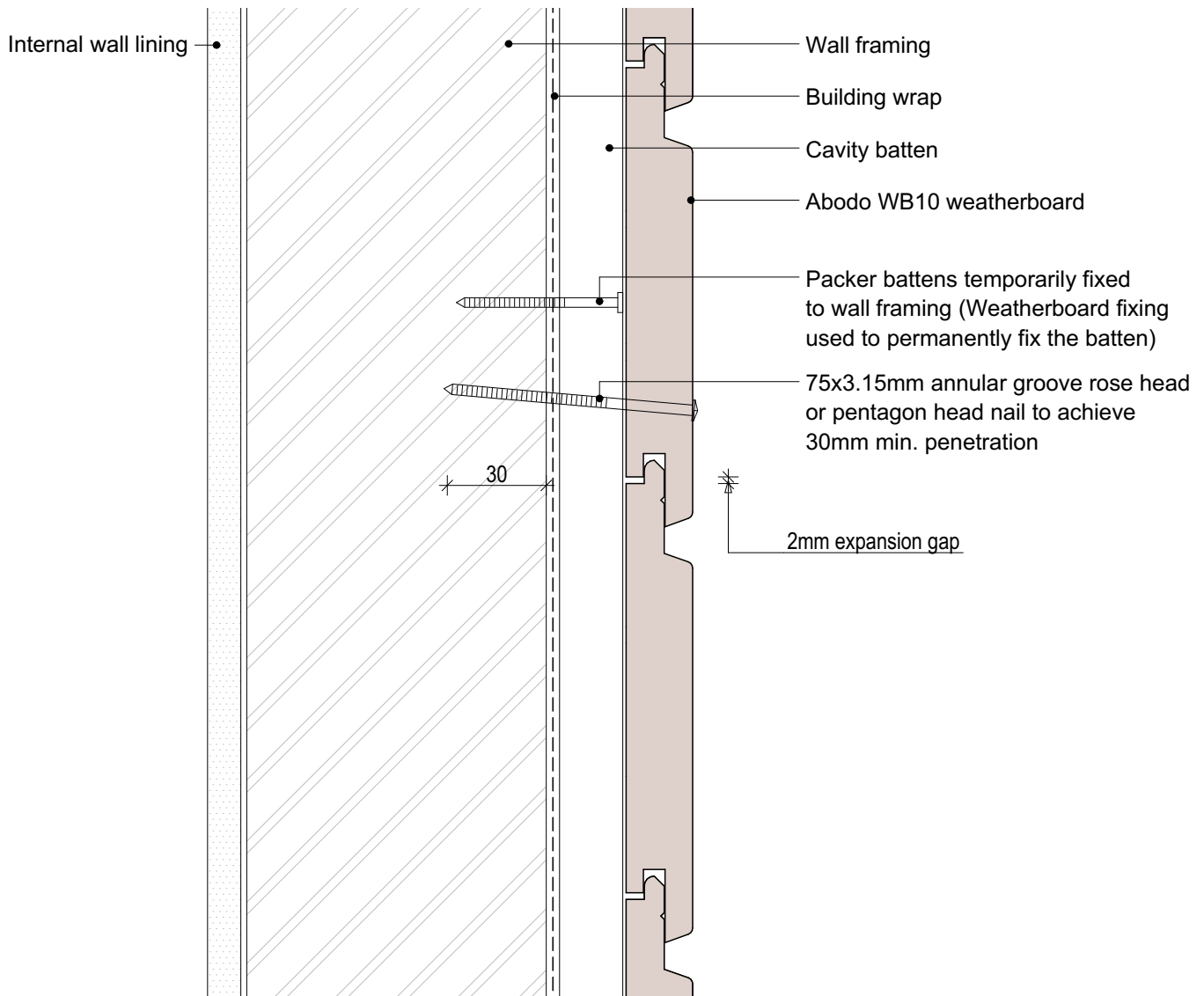
SHEET NUMBER

H.H.4

REVISION

01

1. Weatherboards must be coated with at least one coat all sides prior to fixing.
2. Fixing points must be pre-drilled minimum 1mm smaller than the fastener.
3. Cut ends and exposed timber must be sealed with an approved coating or end seal.



© Abodo Wood Ltd. 2020
info@abodo.co.nz
T +64 (9) 249 0100

SHEET TITLE

Face fixed - Packer Cavity Batten - Stained

PROFILE

Vulcan WB10 Horizontal Weatherboard

SCALE: 1:2 @ A4

PRINT DATE: 01/04/2020

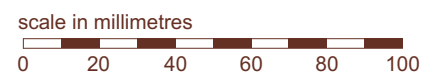
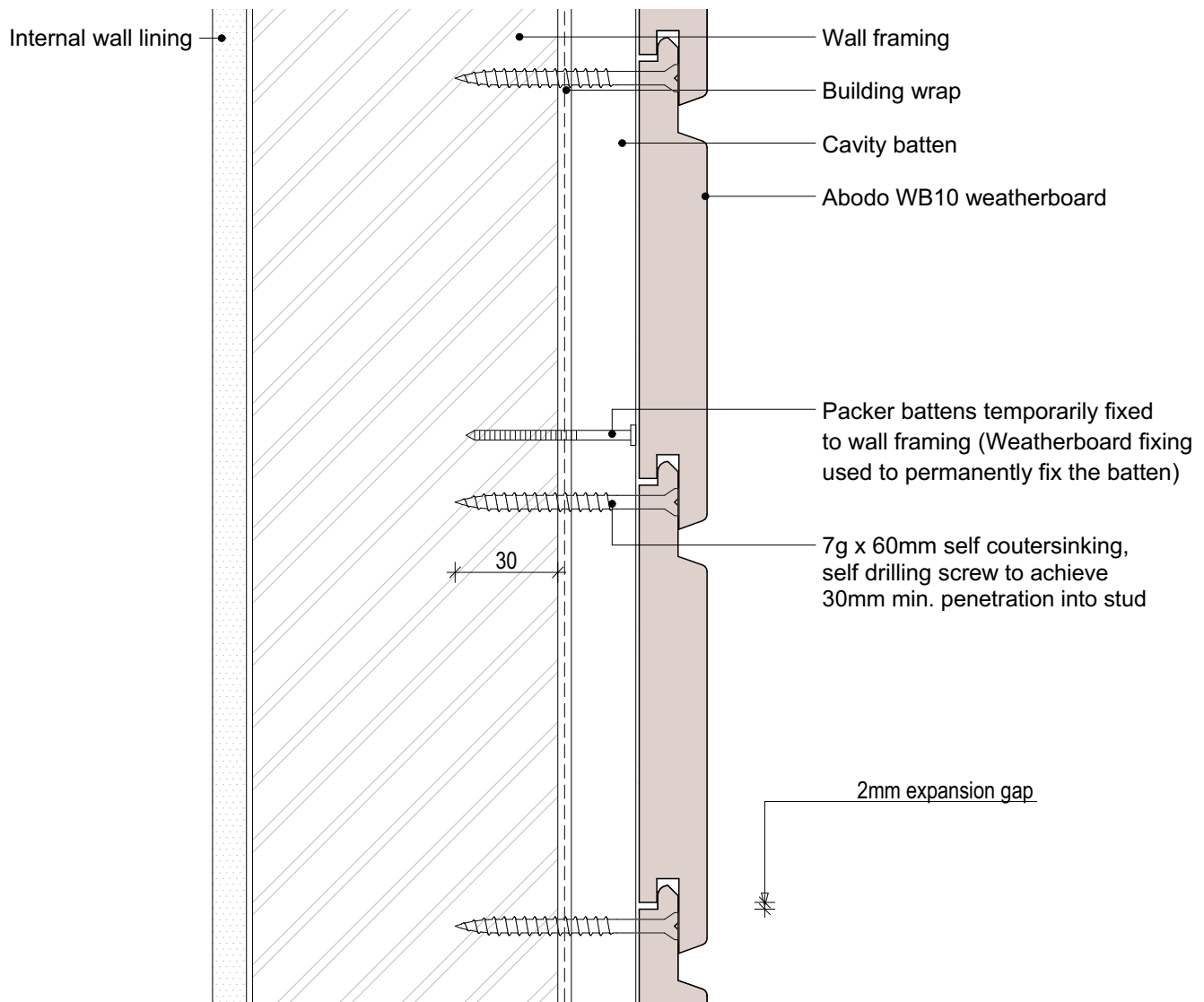
SHEET NUMBER

H.H.5

REVISION

01

1. Weatherboards must be coated with at least one coat all sides prior to fixing.
2. Fixing points must be pre-drilled minimum 1mm smaller than the fastener.
3. Cut ends and exposed timber must be sealed with an approved coating or end seal.



© Abodo Wood Ltd. 2020
info@abodo.co.nz
T +64 (9) 249 0100

SHEET TITLE

Secret Fixing - Packer Cavity Batten Stained

PROFILE

Vulcan WB10 Horizontal Weatherboard

SCALE:

1:2 @ A4

PRINT DATE:

01/04/2020

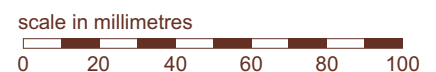
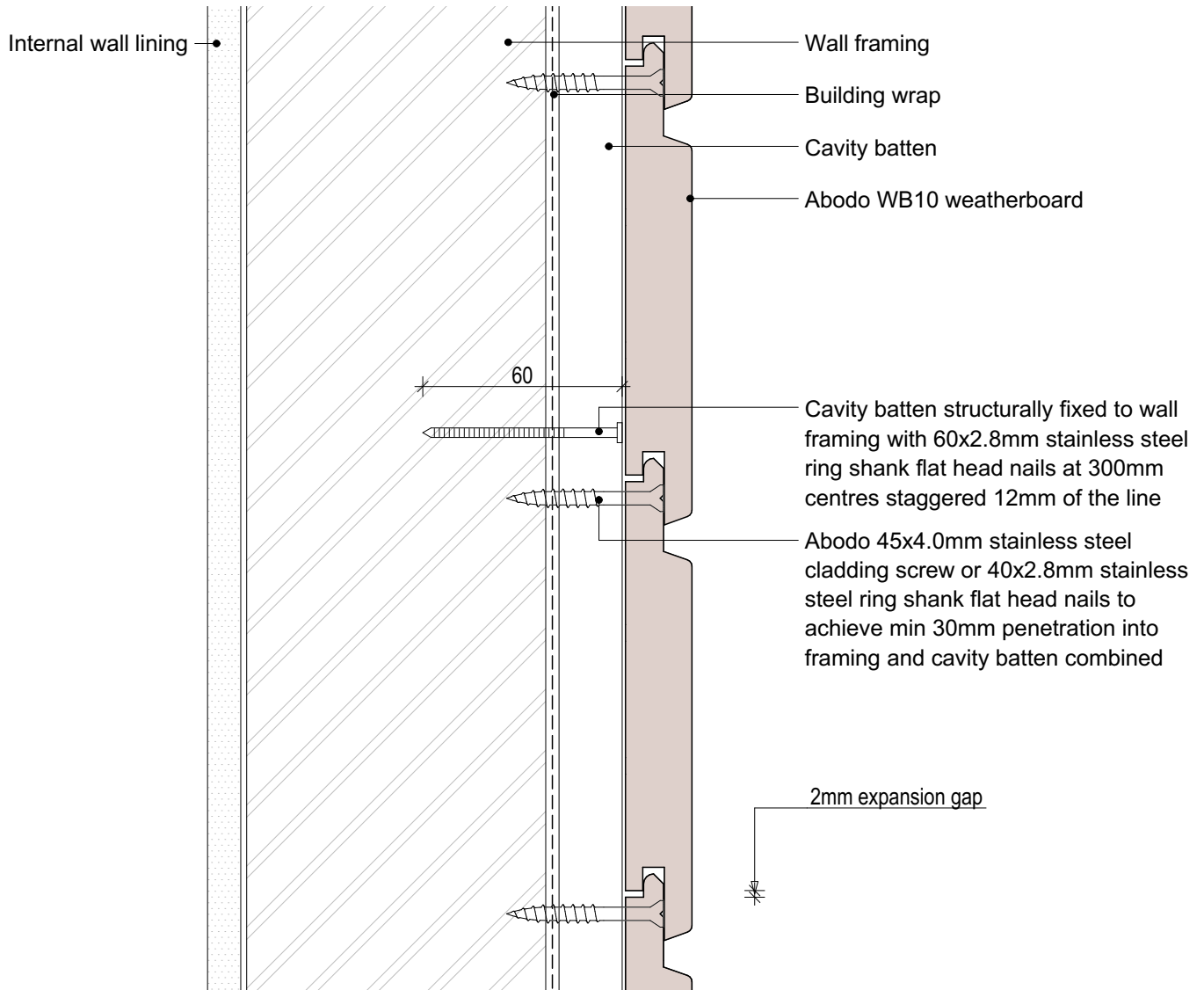
SHEET NUMBER

H.H.6

REVISION

01

1. Weatherboards must be coated with at least one coat all sides prior to fixing.
2. Fixing points must be pre-drilled minimum 1mm smaller than the fastener.
3. Cut ends and exposed timber must be sealed with an approved coating or end seal.



© Abodo Wood Ltd. 2020
info@abodo.co.nz
T +64 (9) 249 0100

SHEET TITLE

Secret Fixing - Structural Cavity Batten - 20x45

PROFILE

Vulcan WB10 Horizontal Weatherboard

SCALE:

1:2 @ A4

PRINT DATE:

01/04/2020

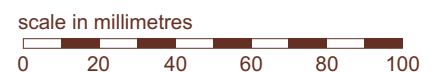
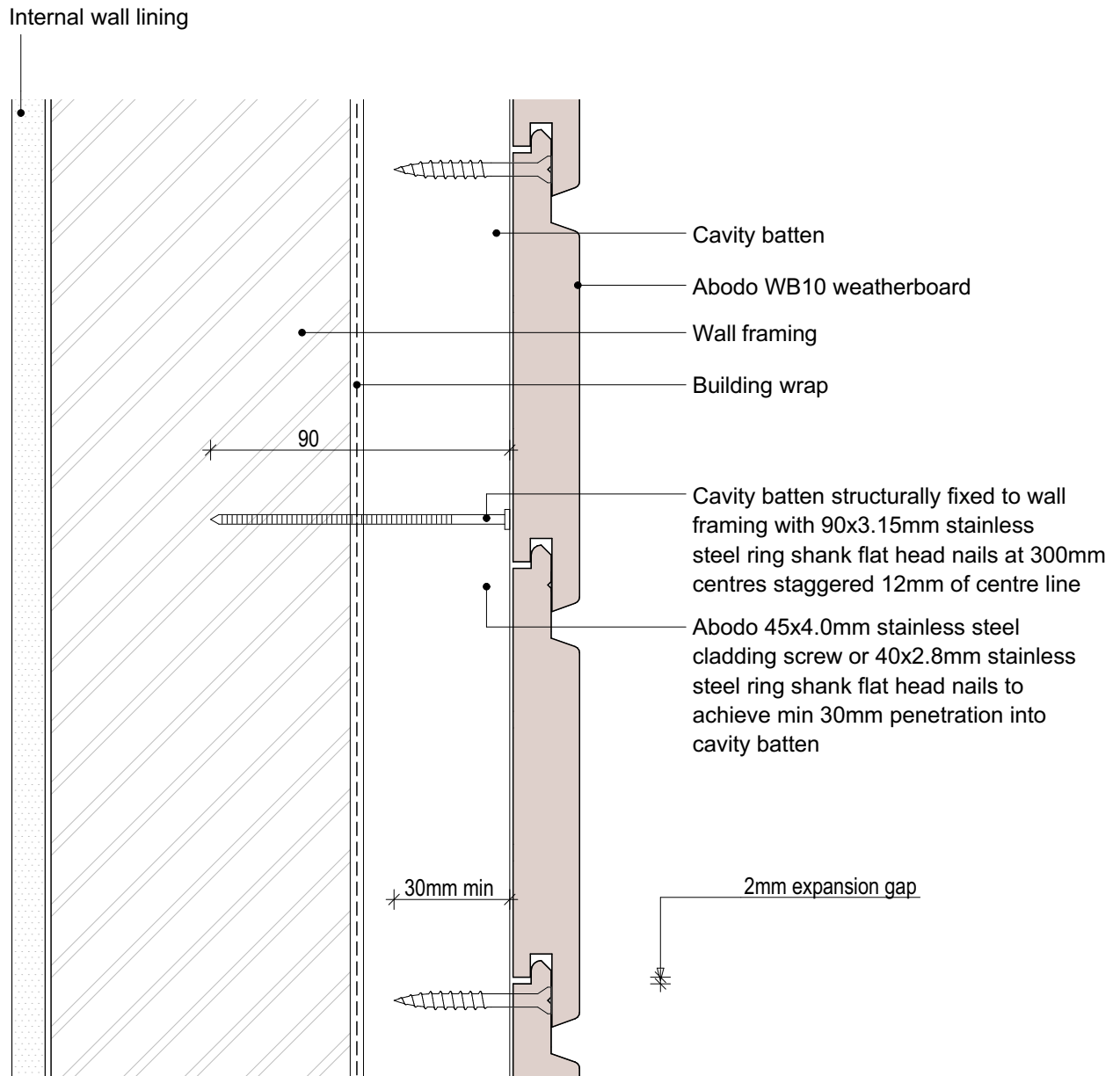
SHEET NUMBER

H.H.7

REVISION

01

1. Weatherboards must be coated with at least one coat all sides prior to fixing.
2. Fixing points must be pre-drilled minimum 1mm smaller than the fastener.
3. Cut ends and exposed timber must be sealed with an approved coating or end seal.



© Abodo Wood Ltd. 2020
info@abodo.co.nz
T +64 (9) 249 0100

SHEET TITLE

Secret Fixing - Structural 45x45 Cavity Batten

PROFILE

Vulcan WB10 Horizontal Weatherboard

SCALE:

1:2 @ A4

PRINT
DATE:

01/04/2020

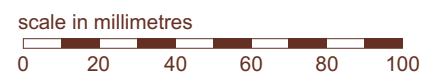
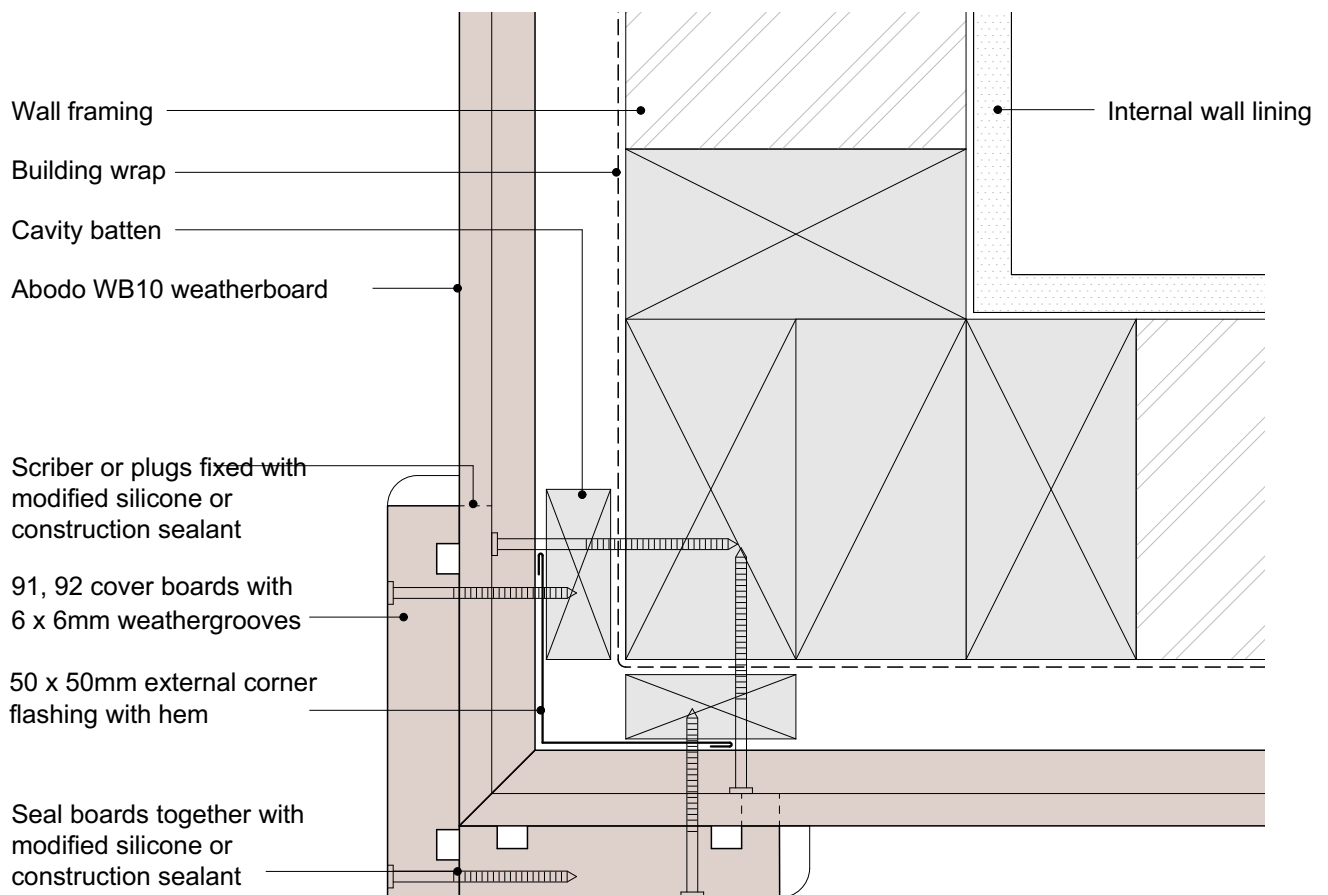
SHEET NUMBER

H.H.8

REVISION

01

1. Weatherboards must be coated with at least one coat all sides prior to fixing.
2. Fixing points must be pre-drilled minimum 1mm smaller than the fastener.
3. Cut ends and exposed timber must be sealed with an approved coating or end seal.



© Abodo Wood Ltd. 2020
info@abodo.co.nz
T +64 (9) 249 0100

SHEET TITLE

External 90° Corner - Boxed

PROFILE

Vulcan WB10 Horizontal Weatherboard

SCALE: 1:2 @ A4

PRINT DATE: 01/04/2020

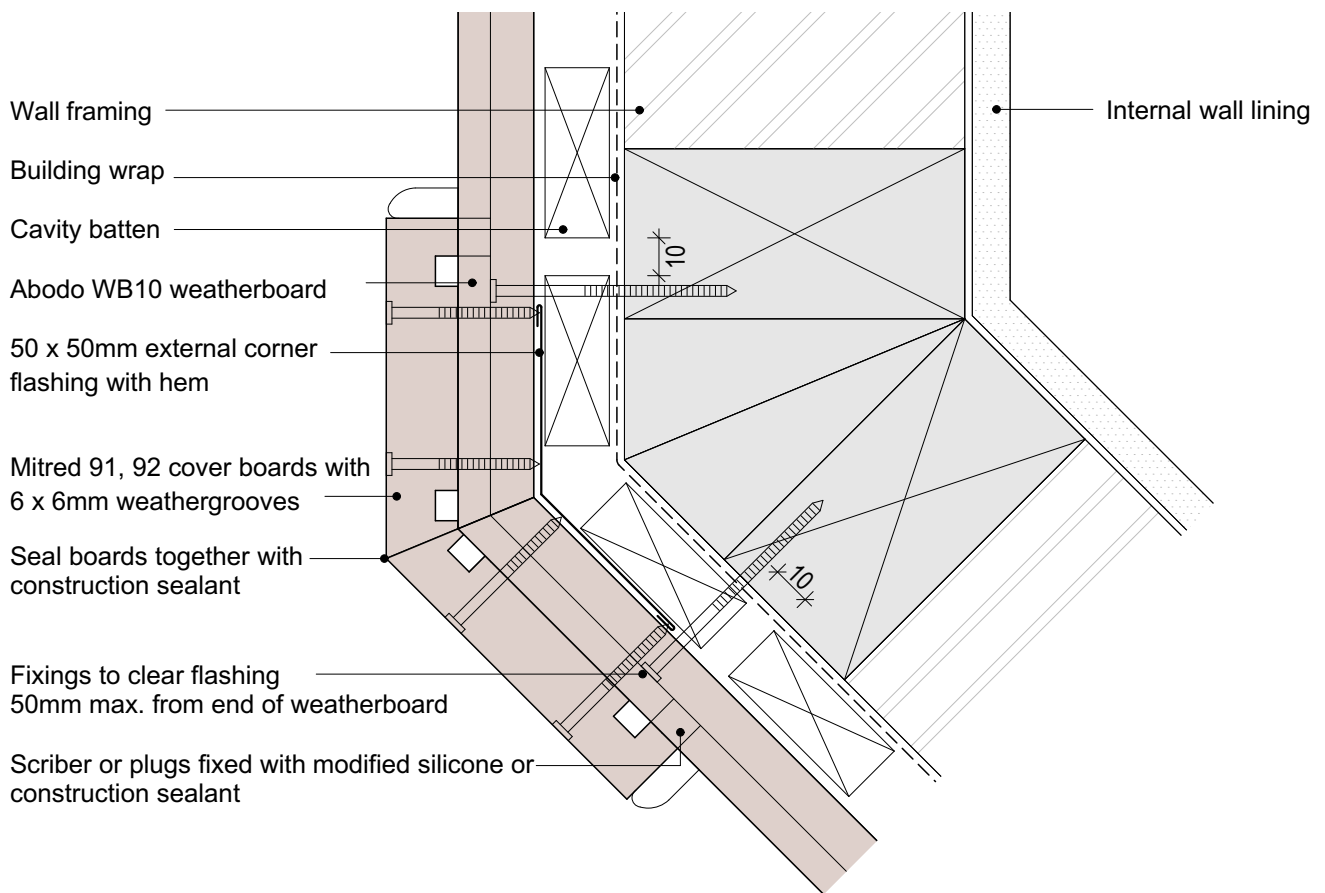
SHEET NUMBER

H.H.9

REVISION

01

1. Weatherboards must be coated with at least one coat all sides prior to fixing.
2. Fixing points must be pre-drilled minimum 1mm smaller than the fastener.
3. Cut ends and exposed timber must be sealed with an approved coating or end seal.



© Abodo Wood Ltd. 2020
info@abodo.co.nz
T +64 (9) 249 0100

SHEET TITLE

External 135° Corner - Boxed

PROFILE

Vulcan WB10 Horizontal Weatherboard

SCALE:

1:2 @ A4

PRINT DATE:

01/04/2020

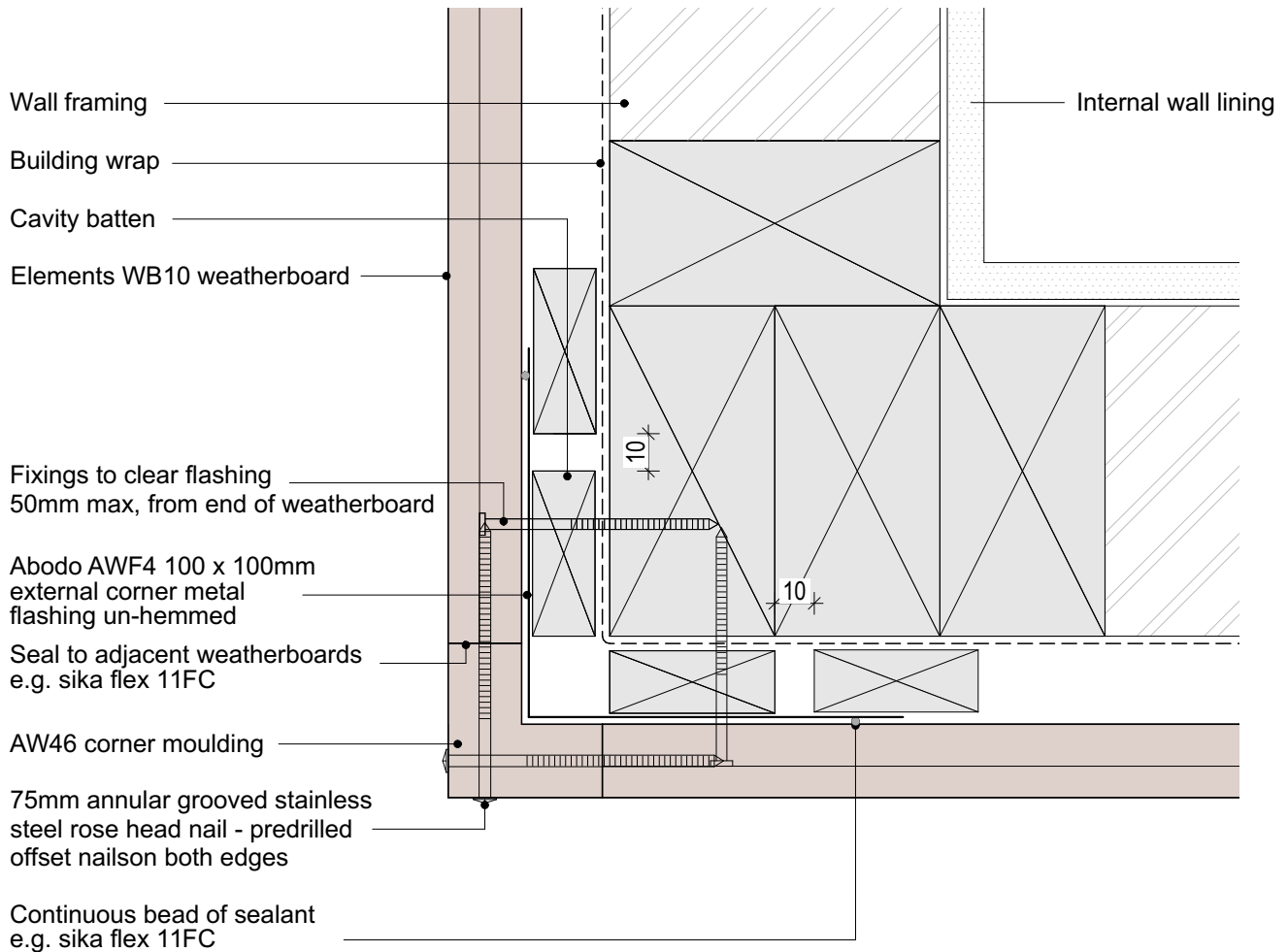
SHEET NUMBER

H.H.10

REVISION

01

1. Weatherboards must be coated with at least one coat all sides prior to fixing.
2. Fixing points must be pre-drilled minimum 1mm smaller than the fastener.
3. Cut ends and exposed timber must be sealed with an approved coating or end seal.



scale in millimetres

0 20 40 60 80 100



© Abodo Wood Ltd. 2020
info@abodo.co.nz
T +64 (9) 249 0100

SHEET TITLE

External 90° Corner - AW46 Moulding

PROFILE

Vulcan WB10 Horizontal Weatherboard

SCALE:

1:2 @ A4

PRINT
DATE:

01/04/2020

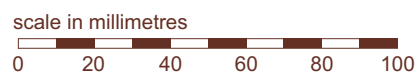
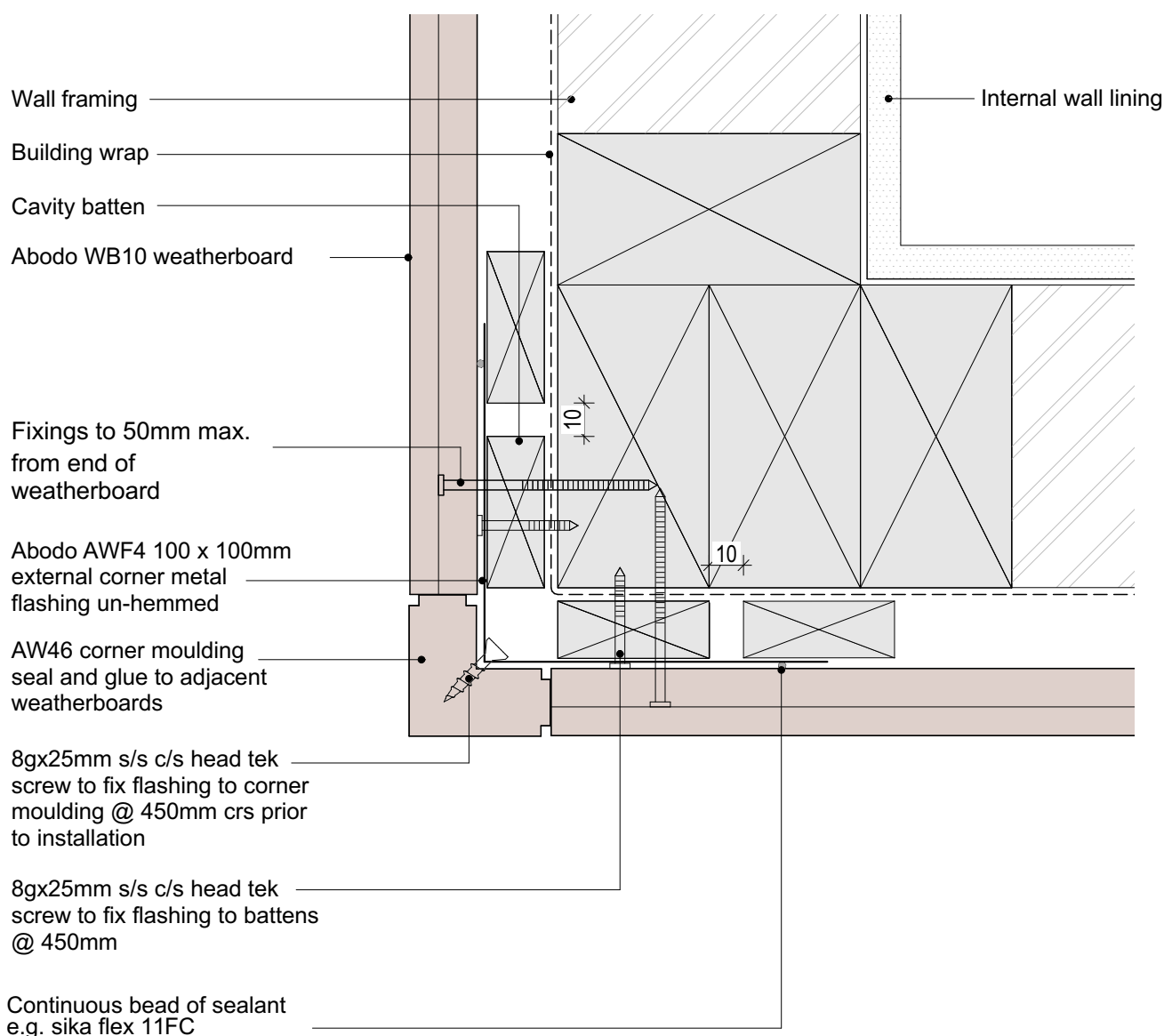
SHEET NUMBER

H.H.11

REVISION

01

1. Weatherboards must be coated with at least one coat all sides prior to fixing.
2. Fixing points must be pre-drilled minimum 1mm smaller than the fastener.
3. Cut ends and exposed timber must be sealed with an approved coating or end seal.



© Abodo Wood Ltd. 2020
info@abodo.co.nz
T +64 (9) 249 0100

SHEET TITLE

External 90° corner-AW46 Moulding

PROFILE

Vulcan WB10 Horizontal Weatherboard

SCALE:

1:2 @ A4

PRINT DATE:

01/04/2020

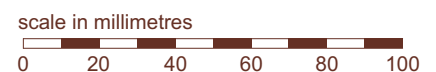
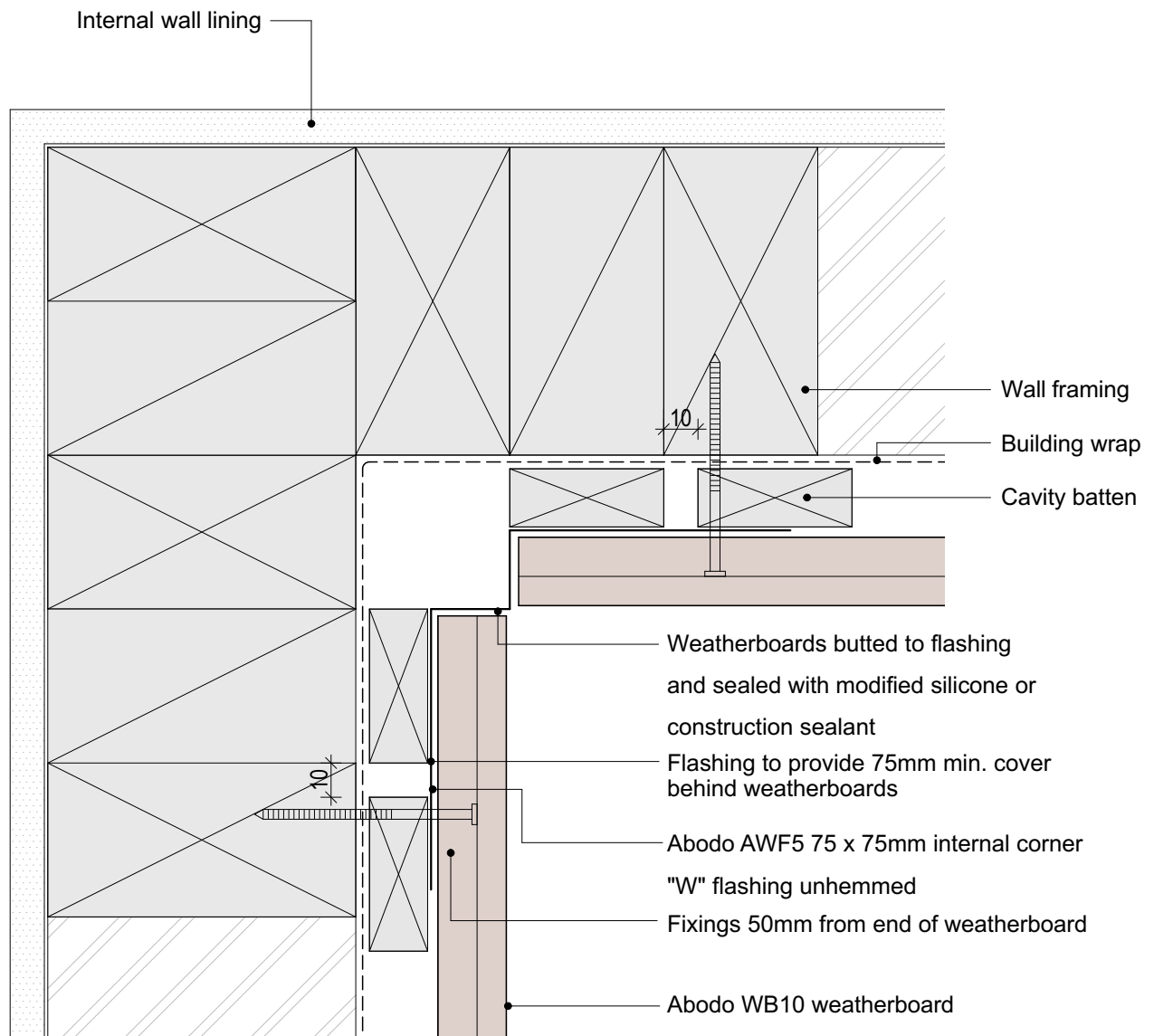
SHEET NUMBER

H.H.12

REVISION

01

1. Weatherboards must be coated with at least one coat all sides prior to fixing.
2. Fixing points must be pre-drilled minimum 1mm smaller than the fastener.
3. Cut ends and exposed timber must be sealed with an approved coating or end seal.



© Abodo Wood Ltd. 2020
info@abodo.co.nz
T +64 (9) 249 0100

SHEET TITLE

Internal 90° Corner - W Flashing

PROFILE

Vulcan WB10 Horizontal Weatherboard

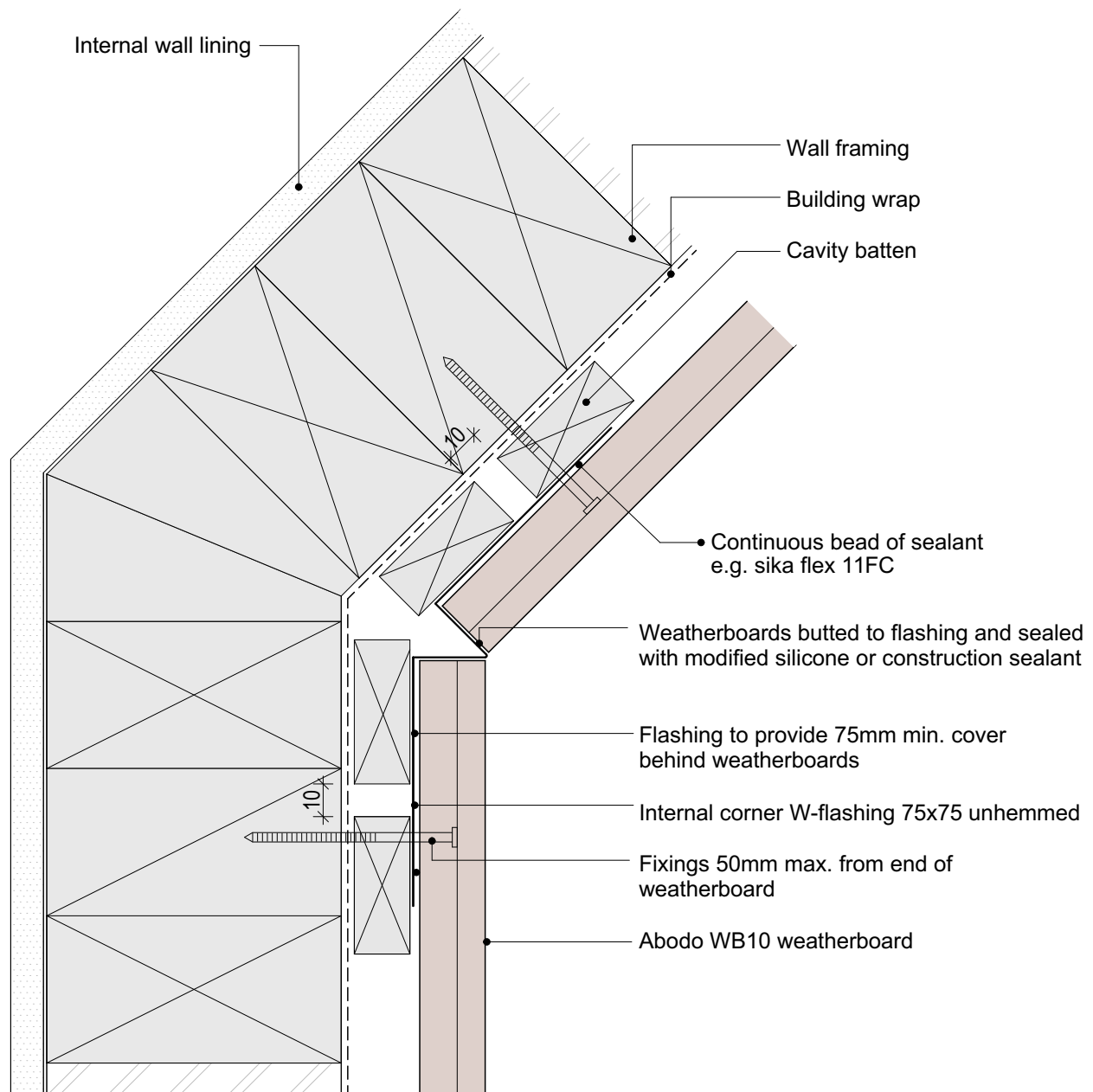
SCALE: 1:2 @ A4

PRINT DATE: 01/04/2020

SHEET NUMBER REVISION

H.H.13 01

1. Weatherboards must be coated with at least one coat all sides prior to fixing.
2. Fixing points must be pre-drilled minimum 1mm smaller than the fastener.
3. Cut ends and exposed timber must be sealed with an approved coating or end seal.



© Abodo Wood Ltd. 2020
info@abodo.co.nz
T +64 (9) 249 0100

SHEET TITLE

Internal 135° Corner - W Flashing

PROFILE

Vulcan WB10 Horizontal Weatherboard

SCALE:

1:2 @ A4

PRINT DATE:

01/04/2020

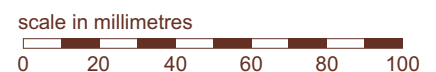
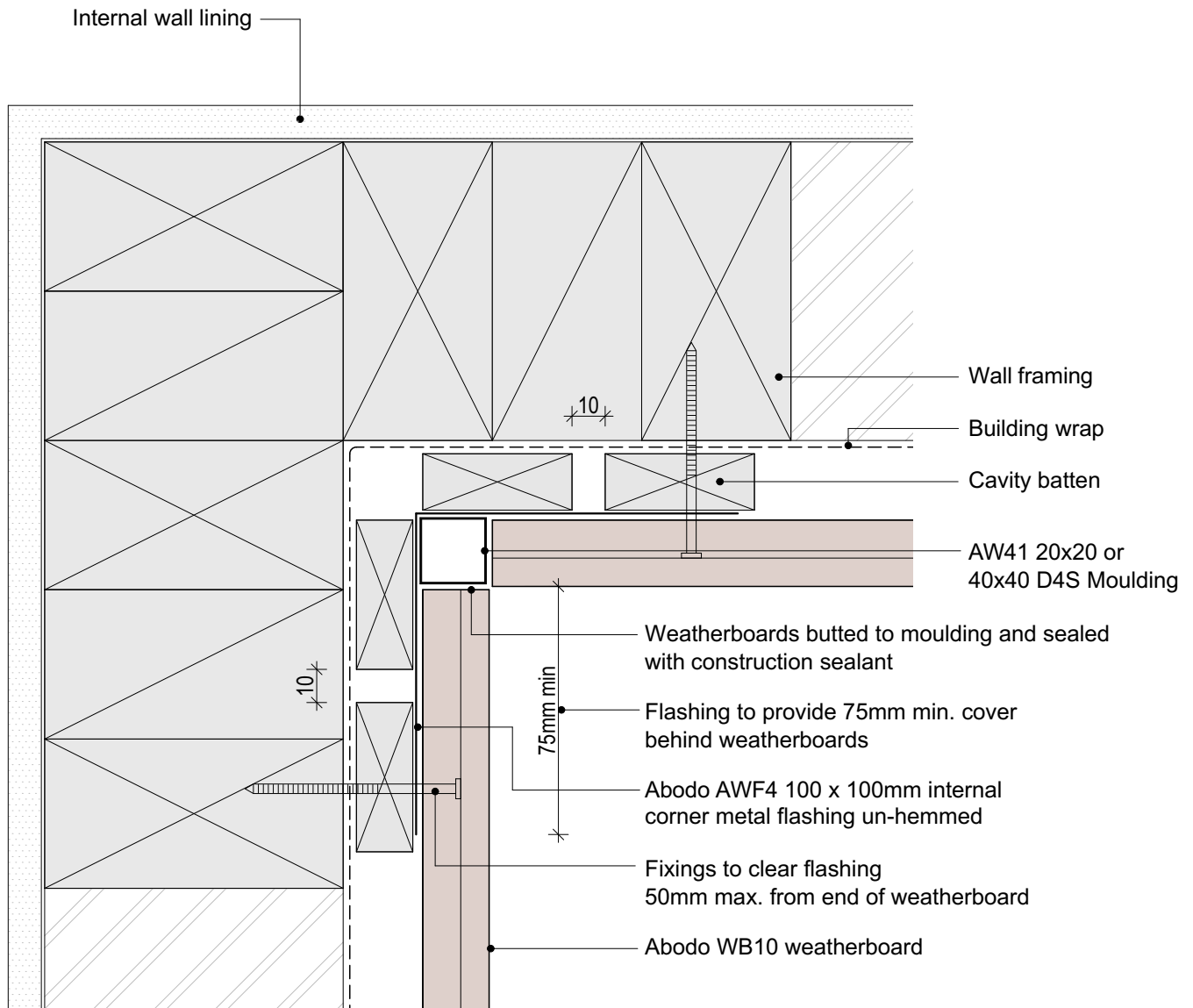
SHEET NUMBER

H.H.14

REVISION

01

1. Weatherboards must be coated with at least one coat all sides prior to fixing.
2. Fixing points must be pre-drilled minimum 1mm smaller than the fastener.
3. Cut ends and exposed timber must be sealed with an approved coating or end seal.



© Abodo Wood Ltd. 2020
info@abodo.co.nz
T +64 (9) 249 0100

SHEET TITLE

Internal 90° Corner - AW41 Moulding

PROFILE

Vulcan WB10 Horizontal Weatherboard

SCALE:

1:2 @ A4

PRINT DATE:

01/04/2020

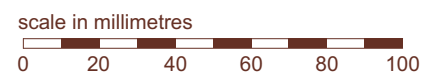
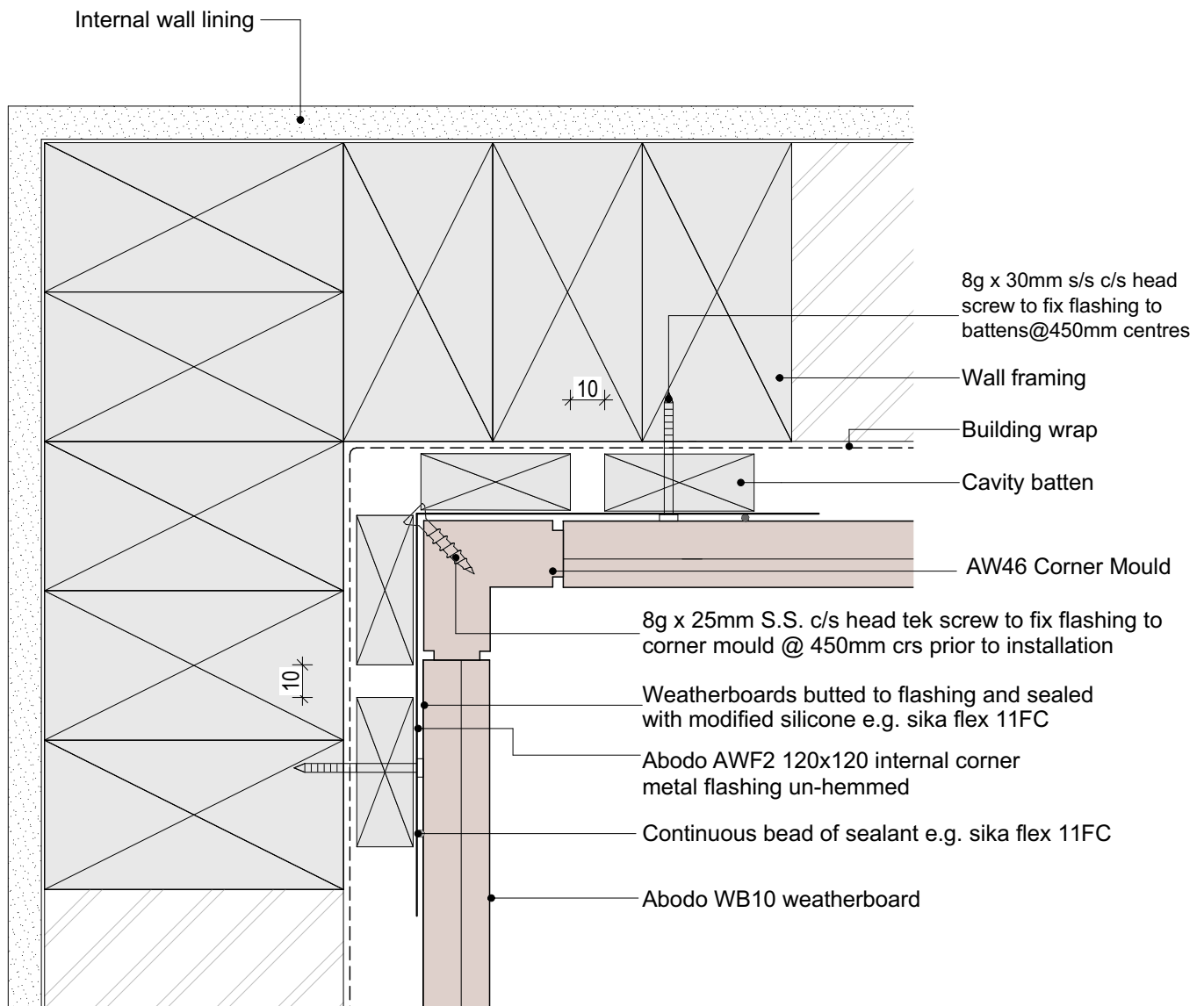
SHEET NUMBER

H.H.15

REVISION

01

1. Weatherboards must be coated with at least one coat all sides prior to fixing.
2. Fixing points must be pre-drilled minimum 1mm smaller than the fastener.
3. Cut ends and exposed timber must be sealed with an approved coating or end seal.



© Abodo Wood Ltd. 2020
info@abodo.co.nz
T +64 (9) 249 0100

SHEET TITLE

AW46 Internal 90° Corner

PROFILE

Vulcan WB10 Horizontal Weatherboard

SCALE:

1:2 @ A4

PRINT DATE:

01/04/2020

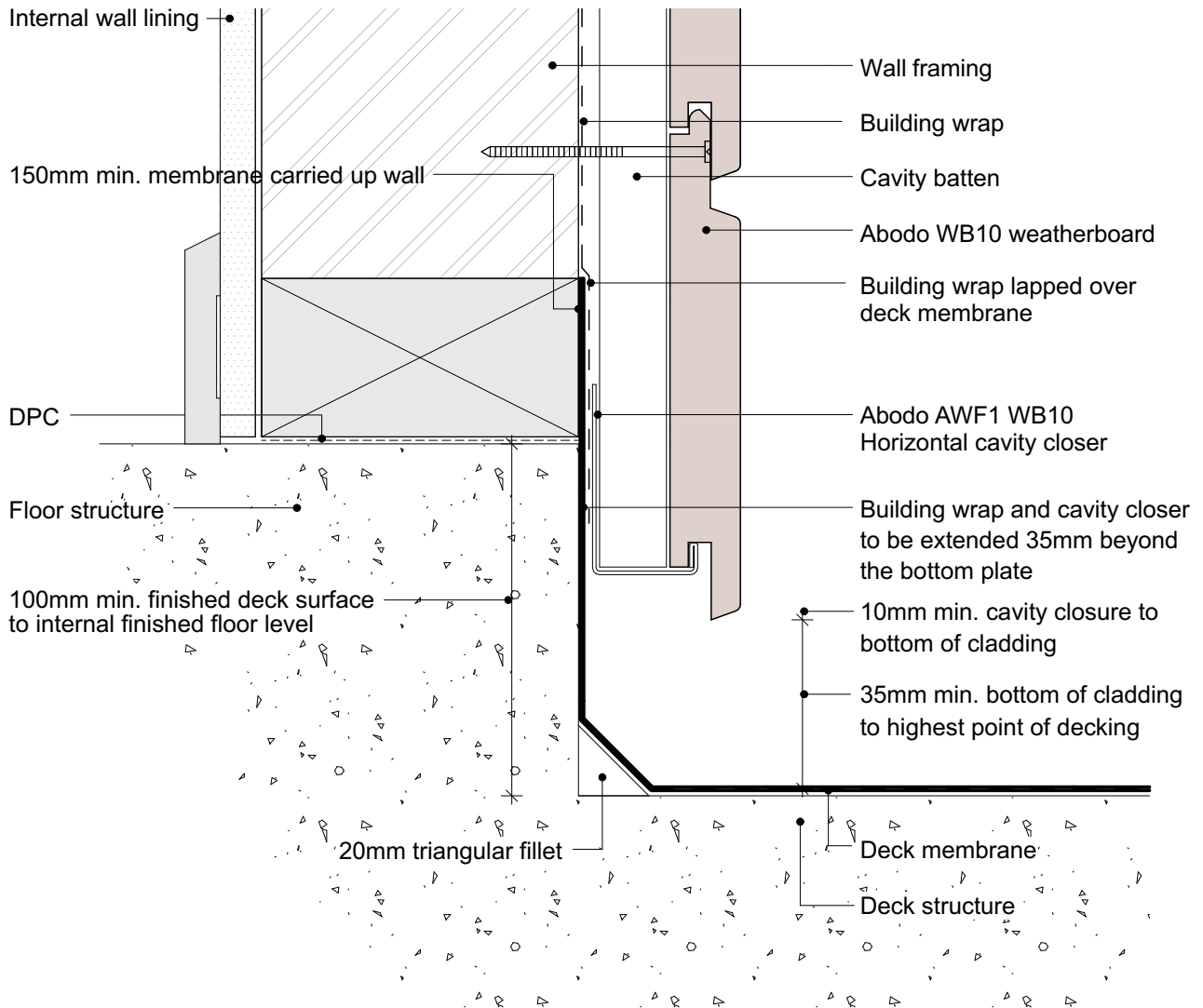
SHEET NUMBER

H.H.16

REVISION

01

1. Weatherboards must be coated with at least one coat all sides prior to fixing.
2. Fixing points must be pre-drilled minimum 1mm smaller than the fastener.
3. Cut ends and exposed timber must be sealed with an approved coating or end seal.



scale in millimetres

0 20 40 60 80 100



© Abodo Wood Ltd. 2020
info@abodo.co.nz
T +64 (9) 249 0100

SHEET TITLE

Enclosed Deck - Concrete Substrate

PROFILE

Vulcan WB10 Horizontal Weatherboard

SCALE:

1:2 @ A4

PRINT
DATE:

01/04/2020

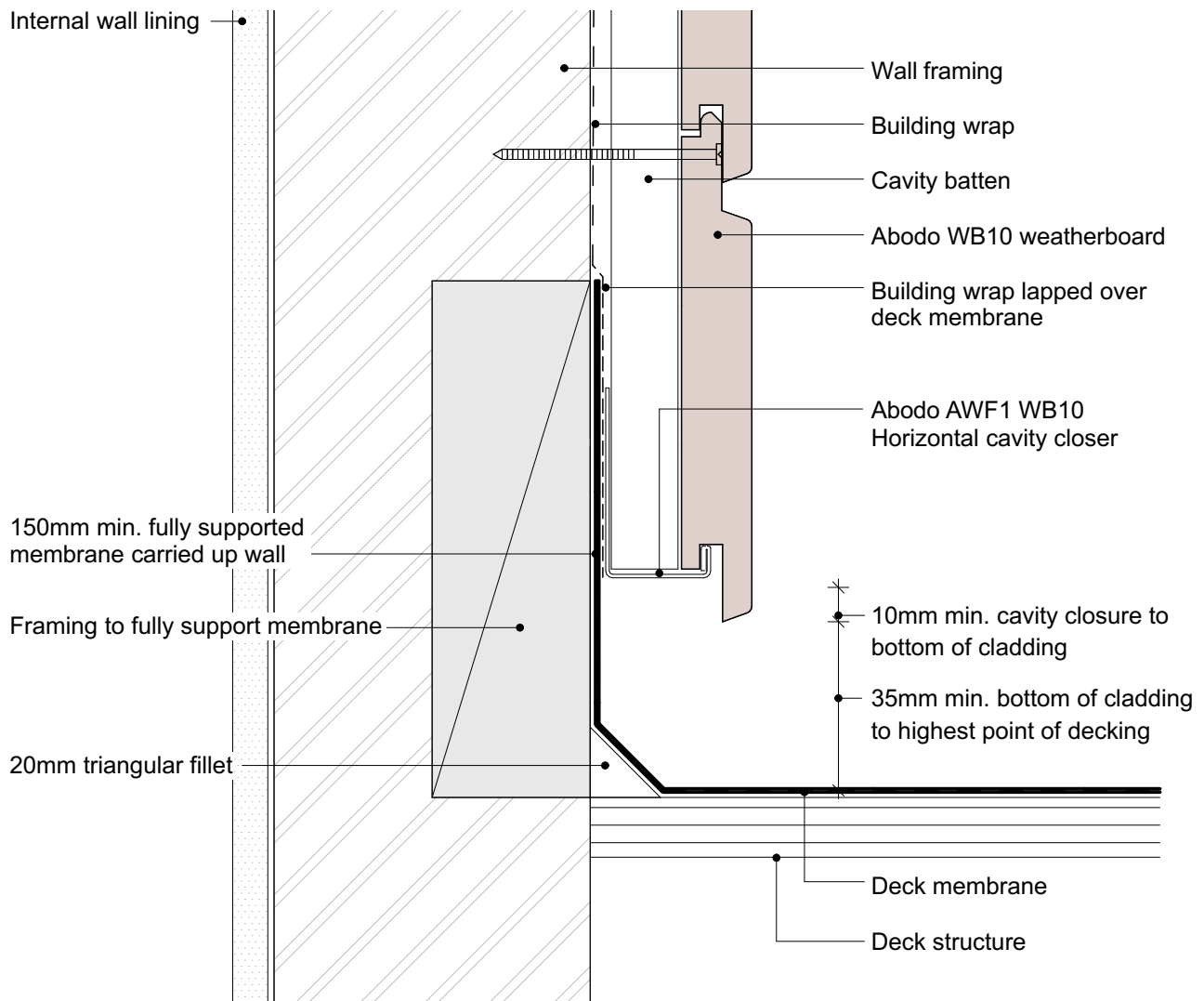
SHEET NUMBER

H.H.17

REVISION

01

1. Weatherboards must be coated with at least one coat all sides prior to fixing.
2. Fixing points must be pre-drilled minimum 1mm smaller than the fastener.
3. Cut ends and exposed timber must be sealed with an approved coating or end seal.



scale in millimetres

0 20 40 60 80 100



© Abodo Wood Ltd. 2020
info@abodo.co.nz
T +64 (9) 249 0100

SHEET TITLE

Enclosed Deck - Timber Substrate

PROFILE

Vulcan WB10 Horizontal Weatherboard

SCALE:

1:2 @ A4

PRINT DATE:

01/04/2020

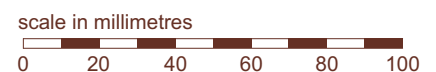
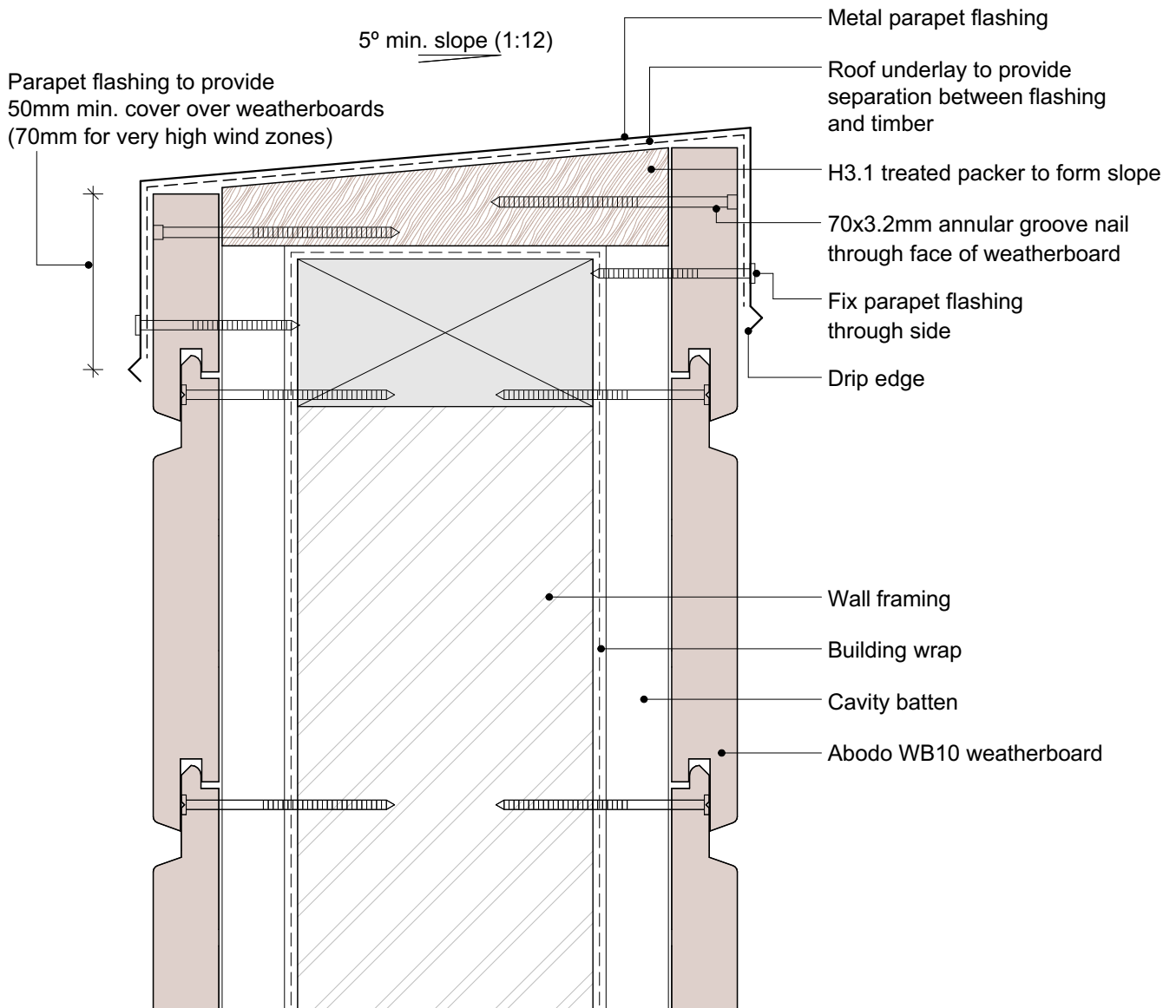
SHEET NUMBER

H.H.18

REVISION

01

1. Weatherboards must be coated with at least one coat all sides prior to fixing.
2. Fixing points must be pre-drilled minimum 1mm smaller than the fastener.
3. Cut ends and exposed timber must be sealed with an approved coating or end seal.



© Abodo Wood Ltd. 2020
info@abodo.co.nz
T +64 (9) 249 0100

SHEET TITLE

Parapet Balustrade Cap Flashing

PROFILE

Vulcan WB10 Horizontal Weatherboard

SCALE:

1:2 @ A4

PRINT DATE:

01/04/2020

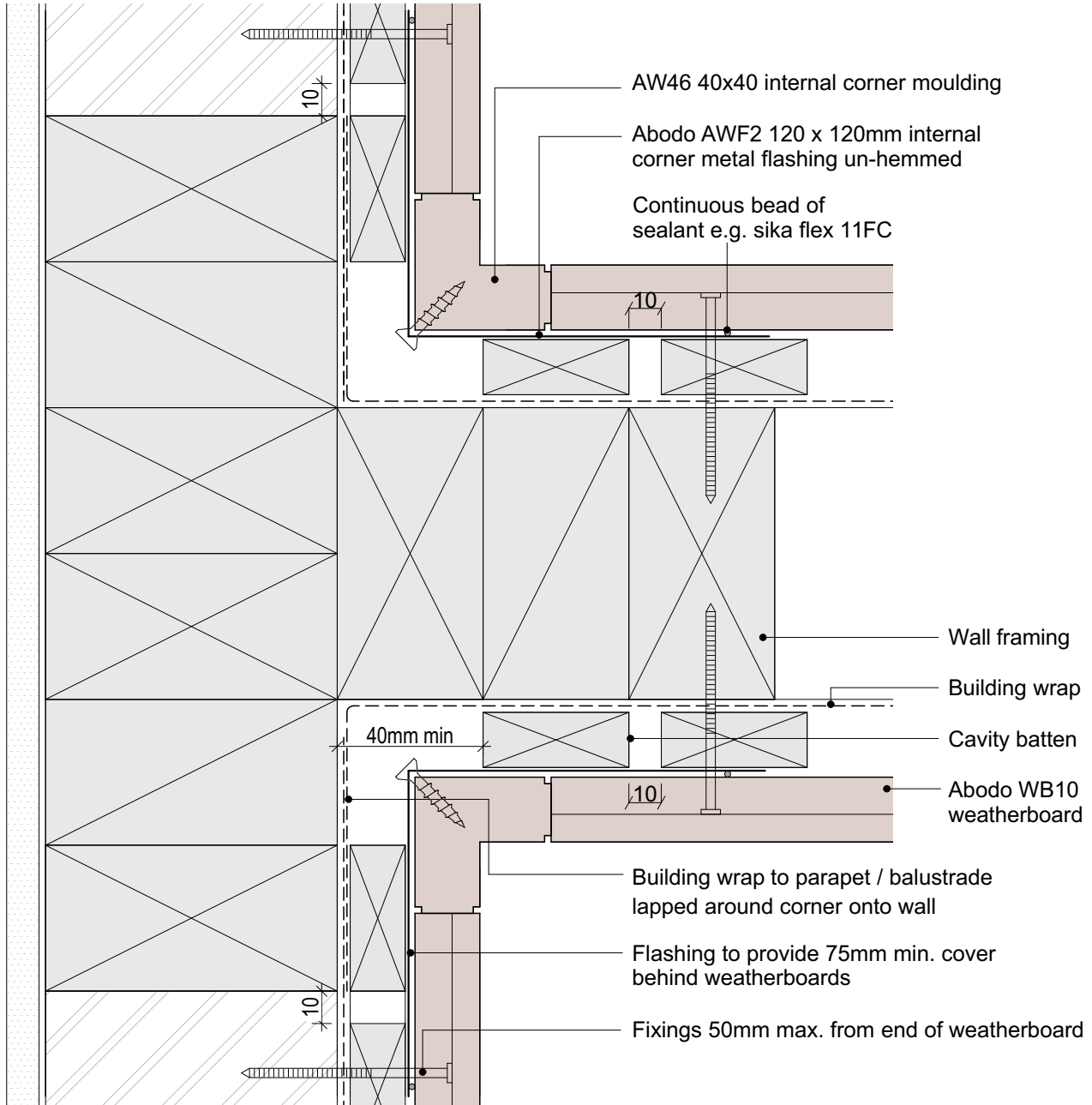
SHEET NUMBER

H.H.19

REVISION

01

1. Weatherboards must be coated with at least one coat all sides prior to fixing.
2. Fixing points must be pre-drilled minimum 1mm smaller than the fastener.
3. Cut ends and exposed timber must be sealed with an approved coating or end seal.



© Abodo Wood Ltd. 2020
info@abodo.co.nz
T +64 (9) 249 0100

SHEET TITLE

Parapet Balustrade Intersection With Wall - Butted

PROFILE

Vulcan WB10 Horizontal Weatherboard

SCALE:

1:2 @ A4

PRINT DATE:

01/04/2020

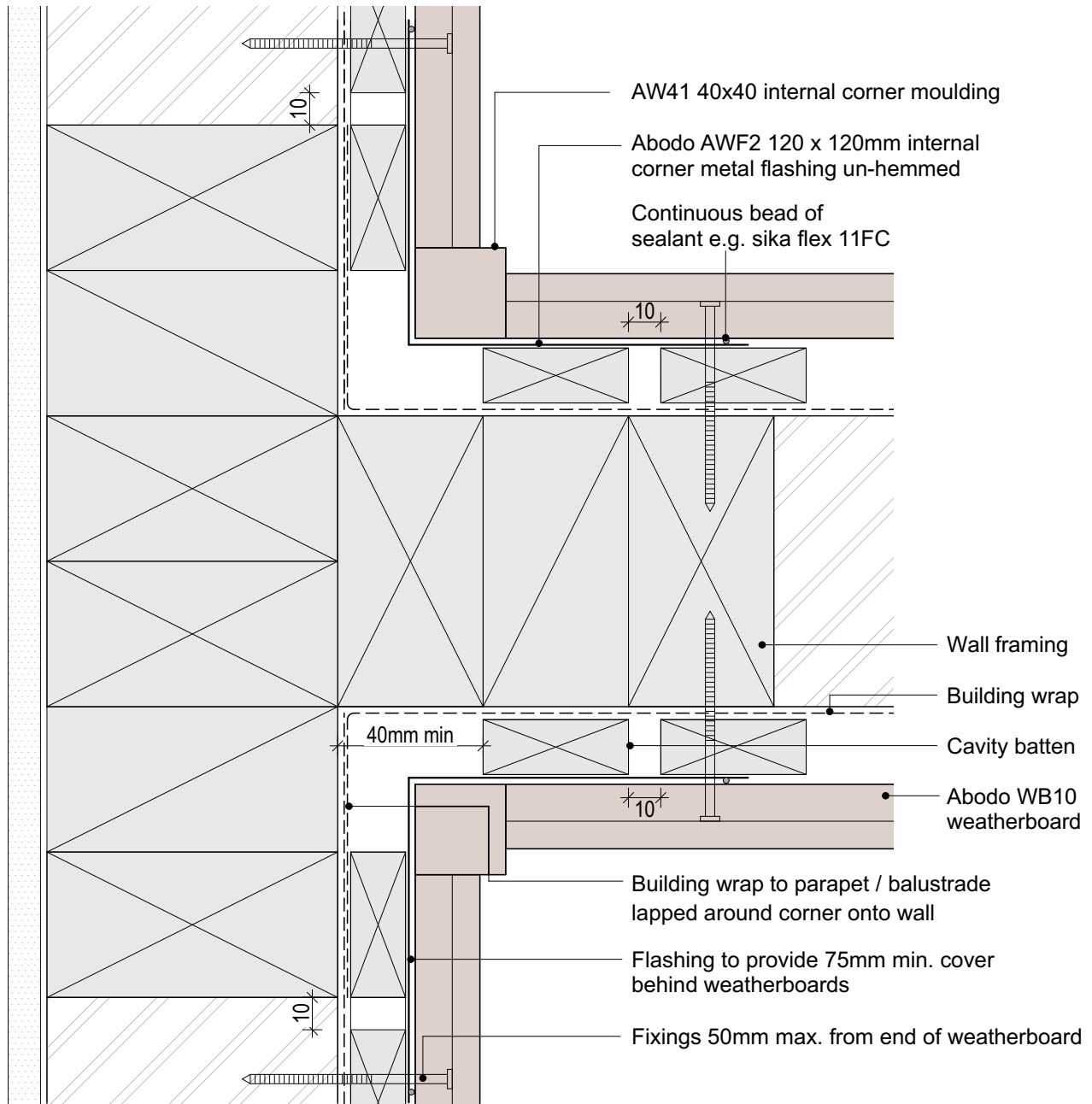
SHEET NUMBER

H.H.20

REVISION

01

1. Weatherboards must be coated with at least one coat all sides prior to fixing.
2. Fixing points must be pre-drilled minimum 1mm smaller than the fastener.
3. Cut ends and exposed timber must be sealed with an approved coating or end seal.



© Abodo Wood Ltd. 2020
info@abodo.co.nz
T +64 (9) 249 0100

SHEET TITLE

Parapet Balustrade Intersection With Wall - Flashing

PROFILE

Vulcan WB10 Horizontal Weatherboard

SCALE:

1:2 @ A4

PRINT DATE:

01/04/2020

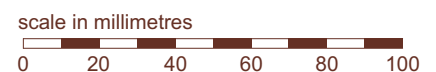
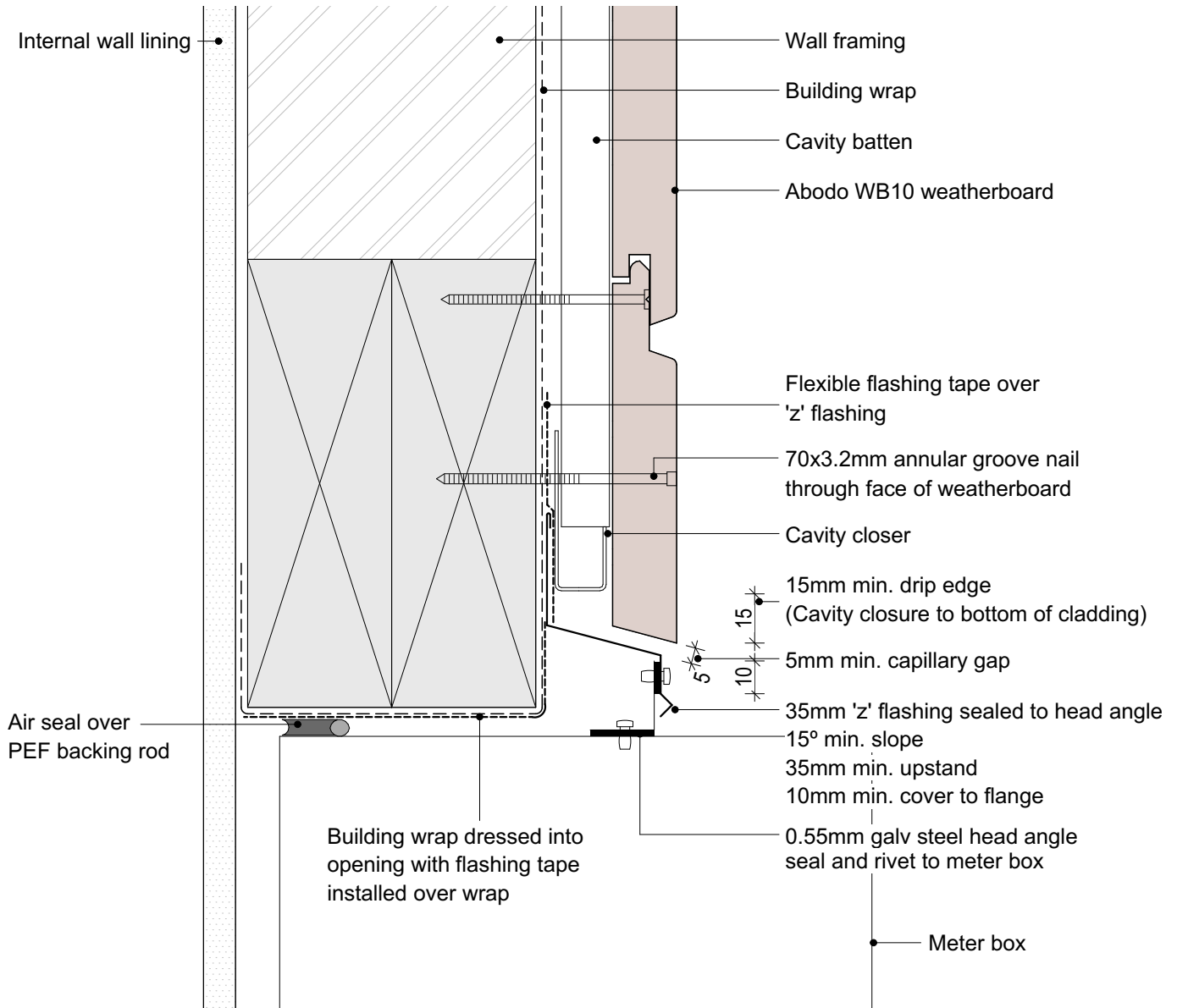
SHEET NUMBER

H.H.21

REVISION

01

1. Weatherboards must be coated with at least one coat all sides prior to fixing.
2. Fixing points must be pre-drilled minimum 1mm smaller than the fastener.
3. Cut ends and exposed timber must be sealed with an approved coating or end seal.



© Abodo Wood Ltd. 2020
info@abodo.co.nz
T +64 (9) 249 0100

SHEET TITLE

Meter Box Head

PROFILE

Vulcan WB10 Horizontal Weatherboard

SCALE:

1:2 @ A4

PRINT DATE:

01/04/2020

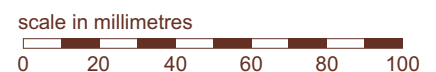
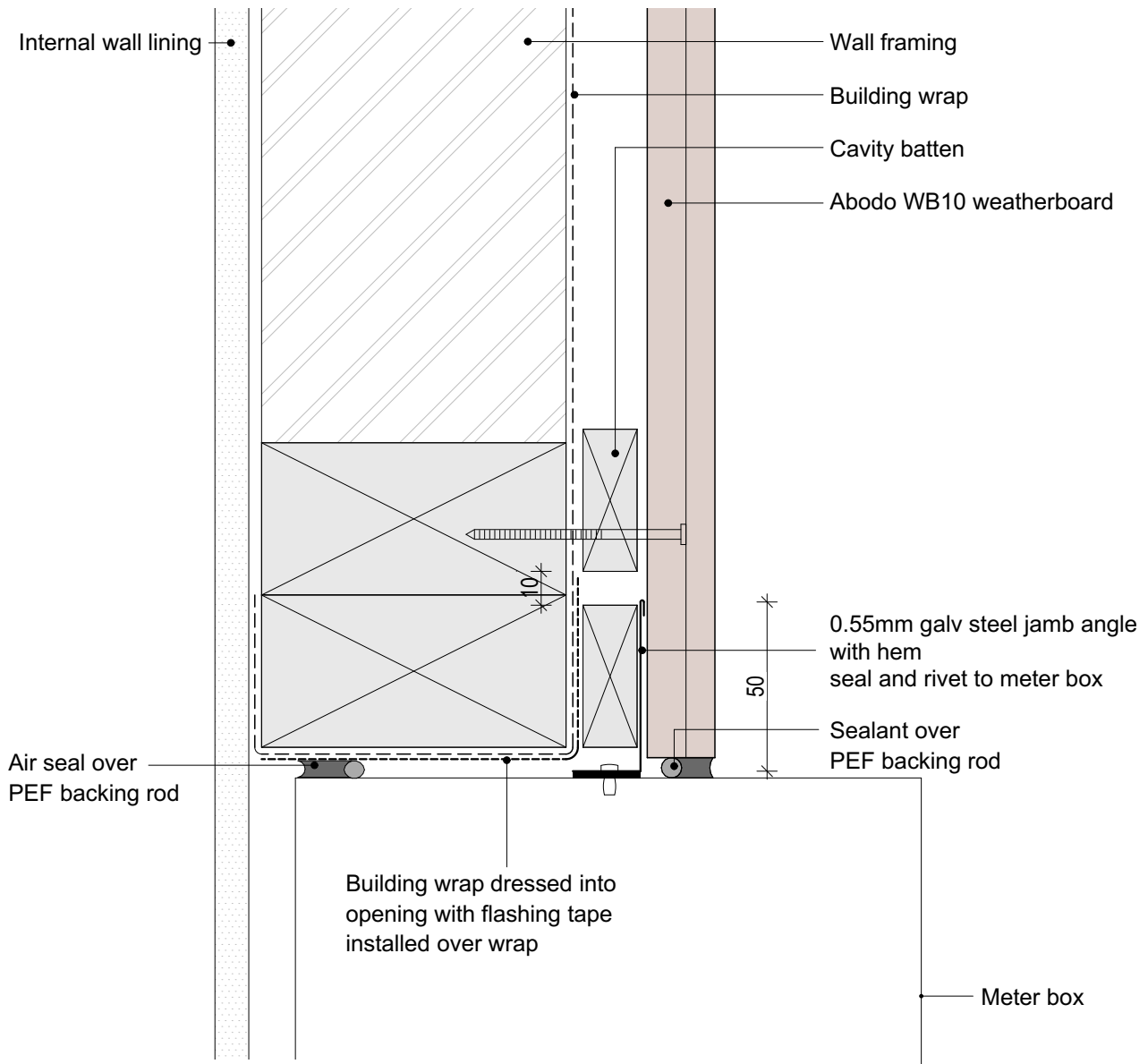
SHEET NUMBER

H.H.22

REVISION

01

1. Weatherboards must be coated with at least one coat all sides prior to fixing.
2. Fixing points must be pre-drilled minimum 1mm smaller than the fastener.
3. Cut ends and exposed timber must be sealed with an approved coating or end seal.



© Abodo Wood Ltd. 2020
info@abodo.co.nz
T +64 (9) 249 0100

SHEET TITLE

Meter Box Jamb

PROFILE

Vulcan WB10 Horizontal Weatherboard

SCALE:

1:2 @ A4

PRINT DATE:

01/04/2020

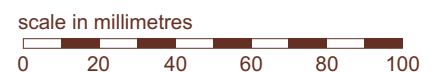
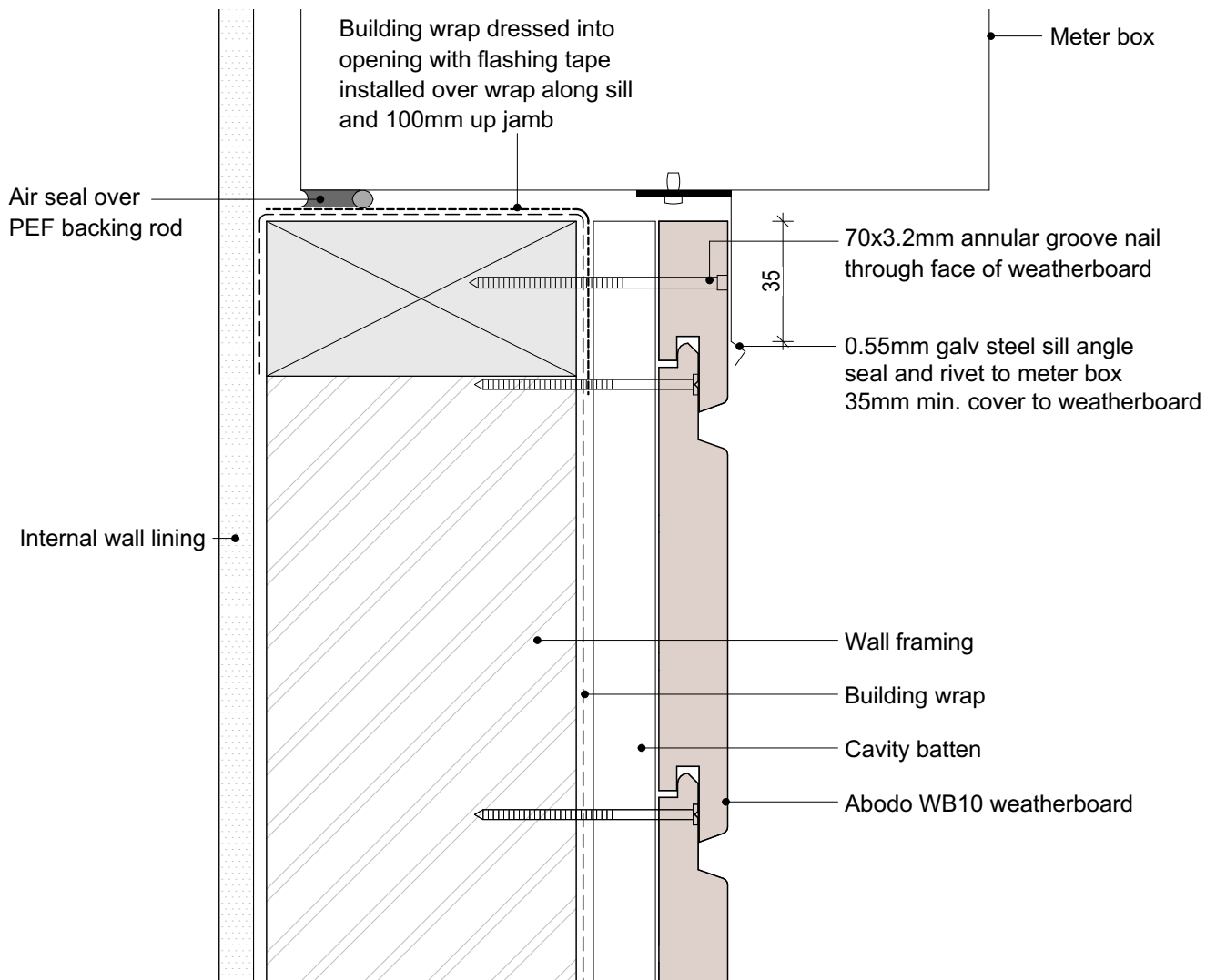
SHEET NUMBER

H.H.23

REVISION

01

1. Weatherboards must be coated with at least one coat all sides prior to fixing.
2. Fixing points must be pre-drilled minimum 1mm smaller than the fastener.
3. Cut ends and exposed timber must be sealed with an approved coating or end seal.



© Abodo Wood Ltd. 2020
info@abodo.co.nz
T +64 (9) 249 0100

SHEET TITLE

Meter Box Sill

PROFILE

Vulcan WB10 Horizontal Weatherboard

SCALE:

1:2 @ A4

PRINT DATE:

01/04/2020

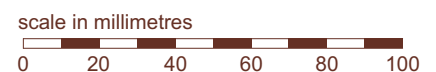
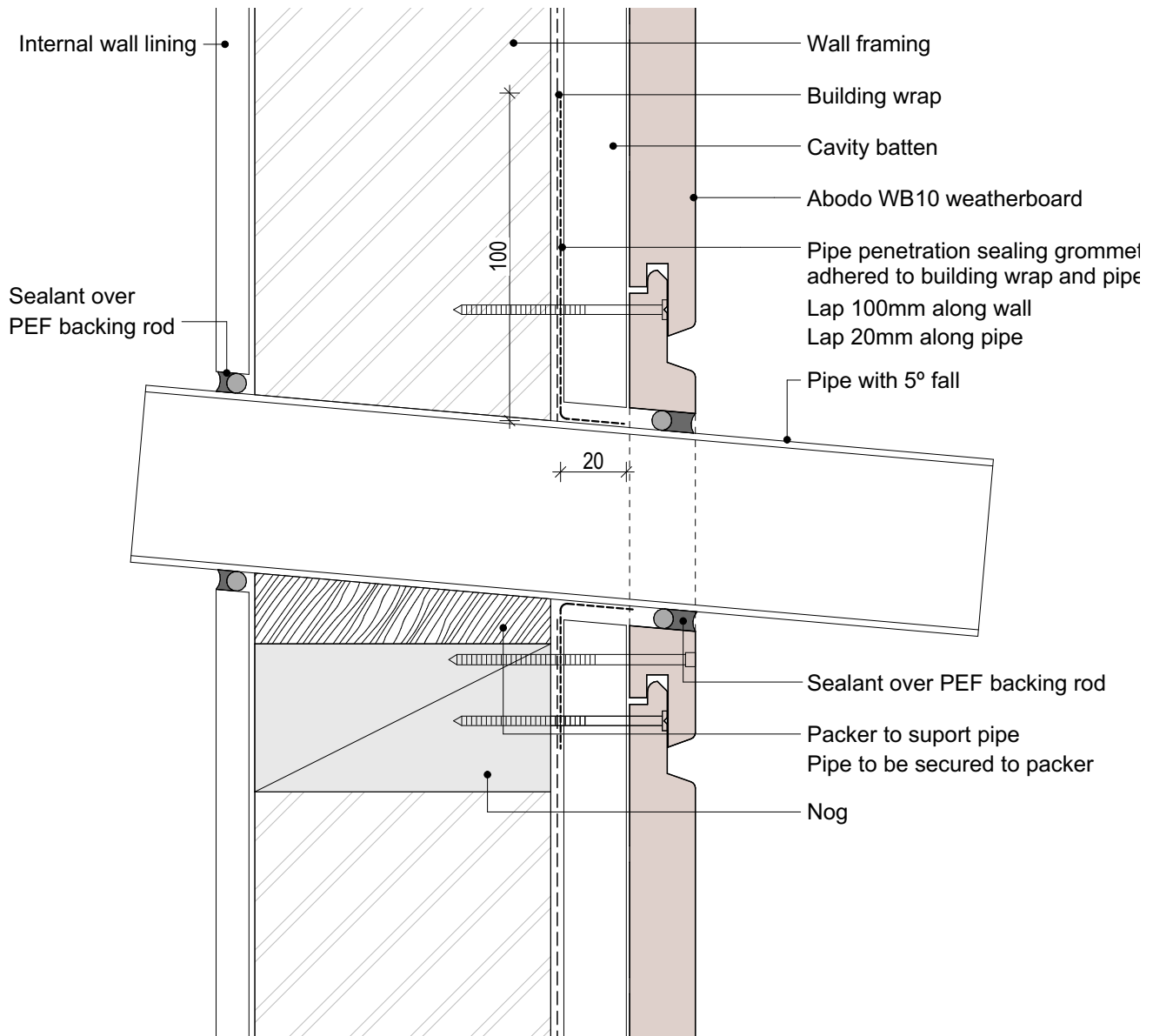
SHEET NUMBER

H.H.24

REVISION

01

1. Weatherboards must be coated with at least one coat all sides prior to fixing.
2. Fixing points must be pre-drilled minimum 1mm smaller than the fastener.
3. Cut ends and exposed timber must be sealed with an approved coating or end seal.



© Abodo Wood Ltd. 2020
info@abodo.co.nz
T +64 (9) 249 0100

SHEET TITLE

Pipe Penetration

PROFILE

Vulcan WB10 Horizontal Weatherboard

SCALE:

1:2 @ A4

PRINT
DATE:

01/04/2020

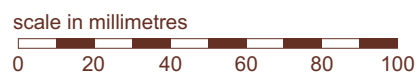
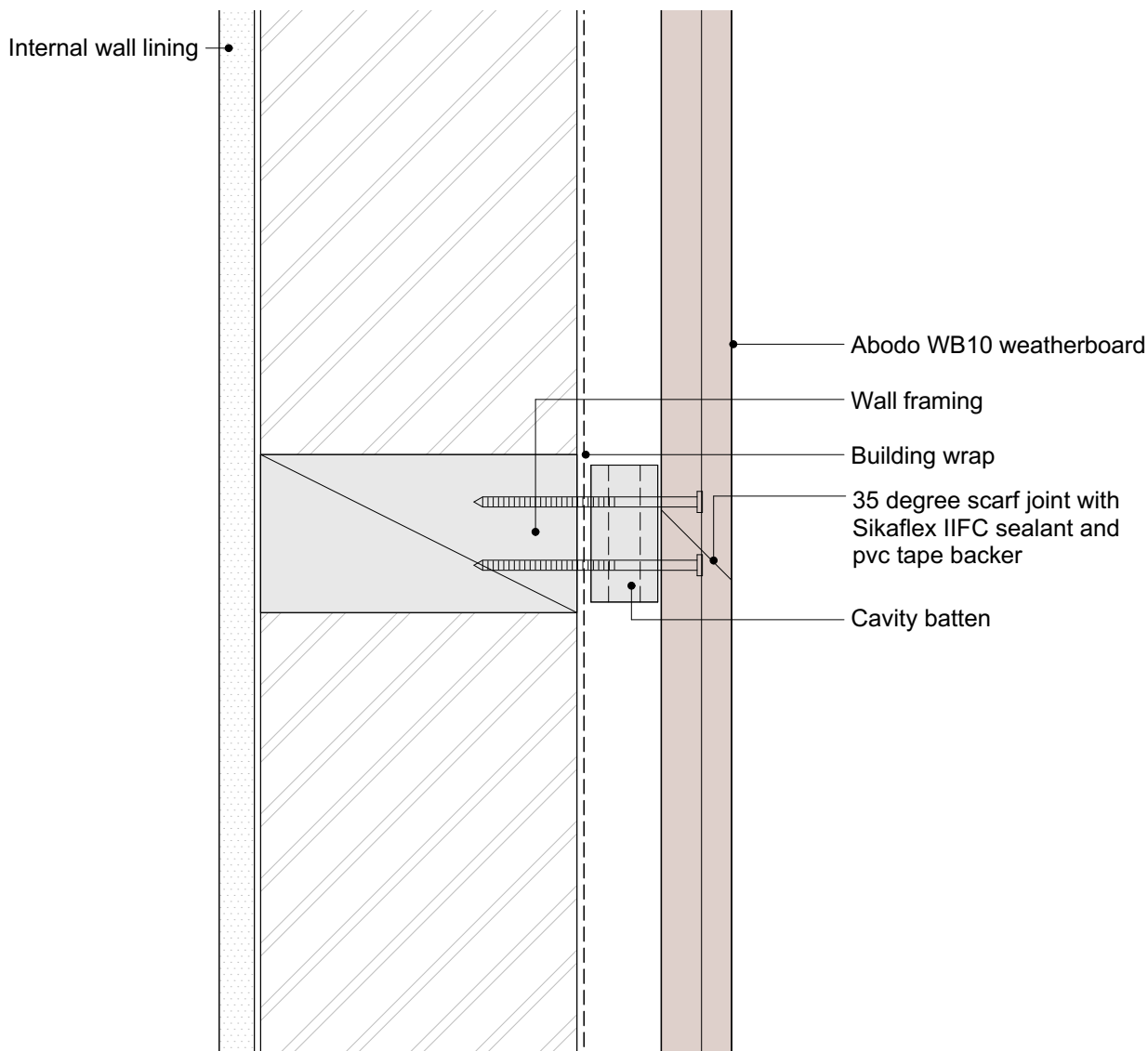
SHEET NUMBER

H.H.25

REVISION

01

1. Weatherboards must be coated with at least one coat all sides prior to fixing.
2. Fixing points must be pre-drilled minimum 1mm smaller than the fastener.
3. Cut ends and exposed timber must be sealed with an approved coating or end seal.



© Abodo Wood Ltd. 2020
info@abodo.co.nz
T +64 (9) 249 0100

SHEET TITLE

Weatherboard Fix - Birdseye

PROFILE

Vulcan WB10 Horizontal Weatherboard

SCALE:

1:2 @ A4

PRINT
DATE:

01/04/2020

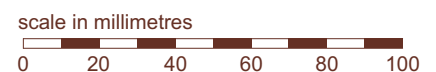
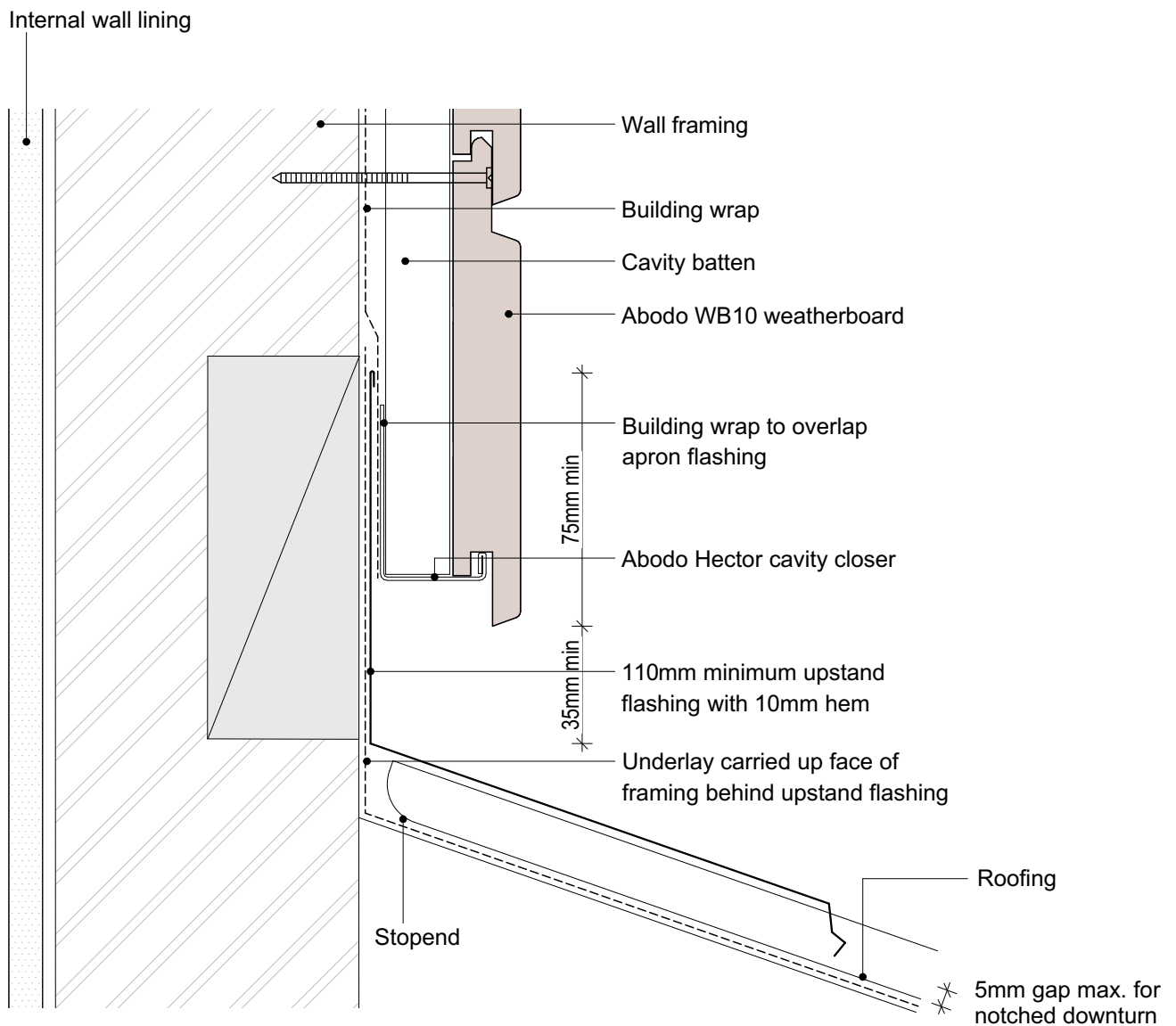
SHEET NUMBER

H.H.26

REVISION

01

1. Weatherboards must be coated with at least one coat all sides prior to fixing.
2. Fixing points must be pre-drilled minimum 1mm smaller than the fastener.
3. Cut ends and exposed timber must be sealed with an approved coating or end seal.



© Abodo Wood Ltd. 2020
info@abodo.co.nz
T +64 (9) 249 0100

SHEET TITLE

Apron Flahing

PROFILE

Vulcan WB10 Horizontal Weatherboard

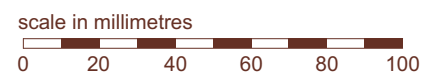
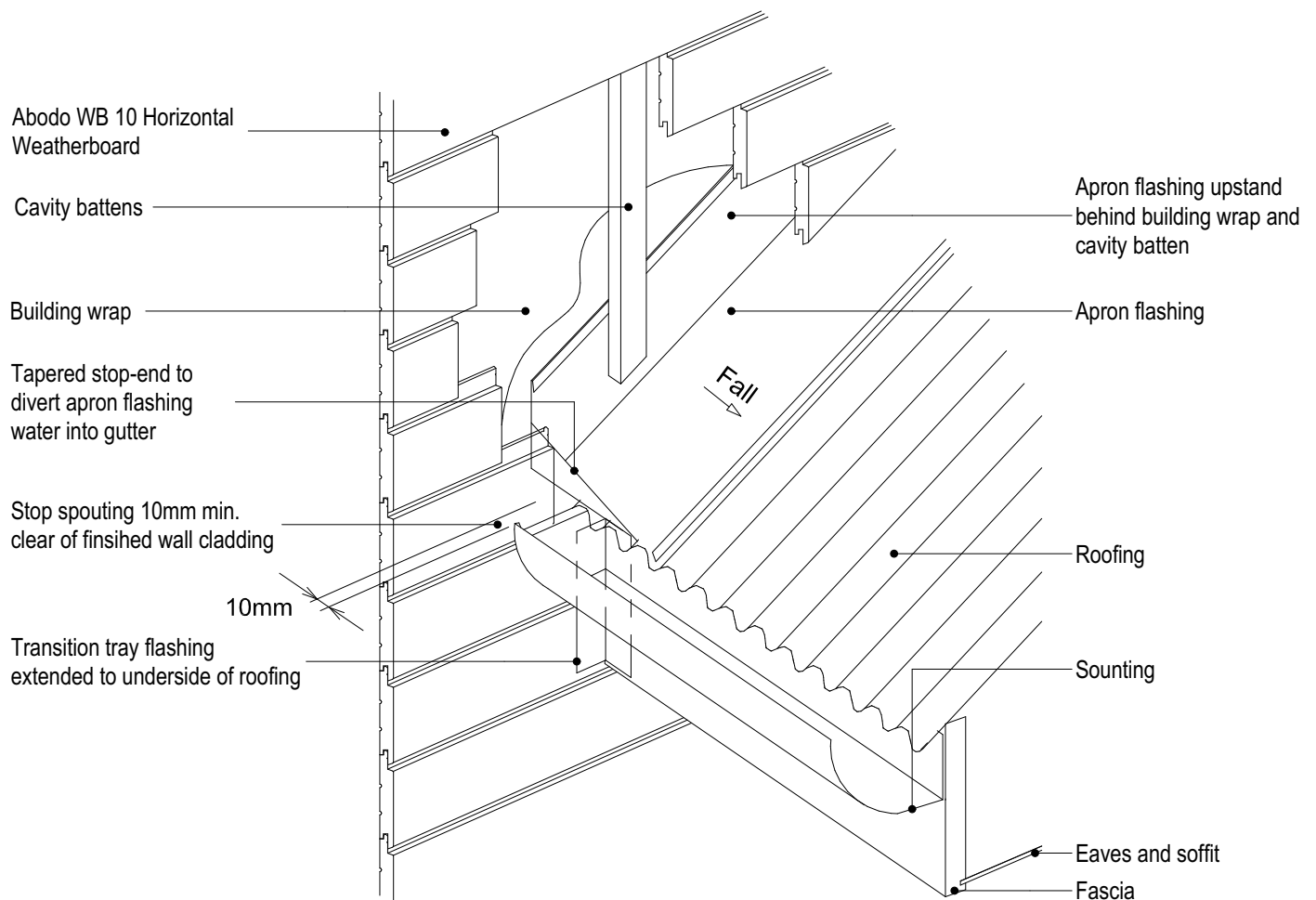
SCALE: 1:2 @ A4

PRINT DATE: 01/04/2020

SHEET NUMBER REVISION

H.H.27 01

1. Weatherboards must be coated with at least one coat all sides prior to fixing.
2. Fixing points must be pre-drilled minimum 1mm smaller than the fastener.
3. Cut ends and exposed timber must be sealed with an approved coating or end seal.



© Abodo Wood Ltd. 2020
info@abodo.co.nz
T +64 (9) 249 0100

SHEET TITLE

Roof Kick-out Flashing

PROFILE

Vulcan WB10 Horizontal Weatherboard

SCALE:

1:2 @ A4

PRINT
DATE:

01/04/2020

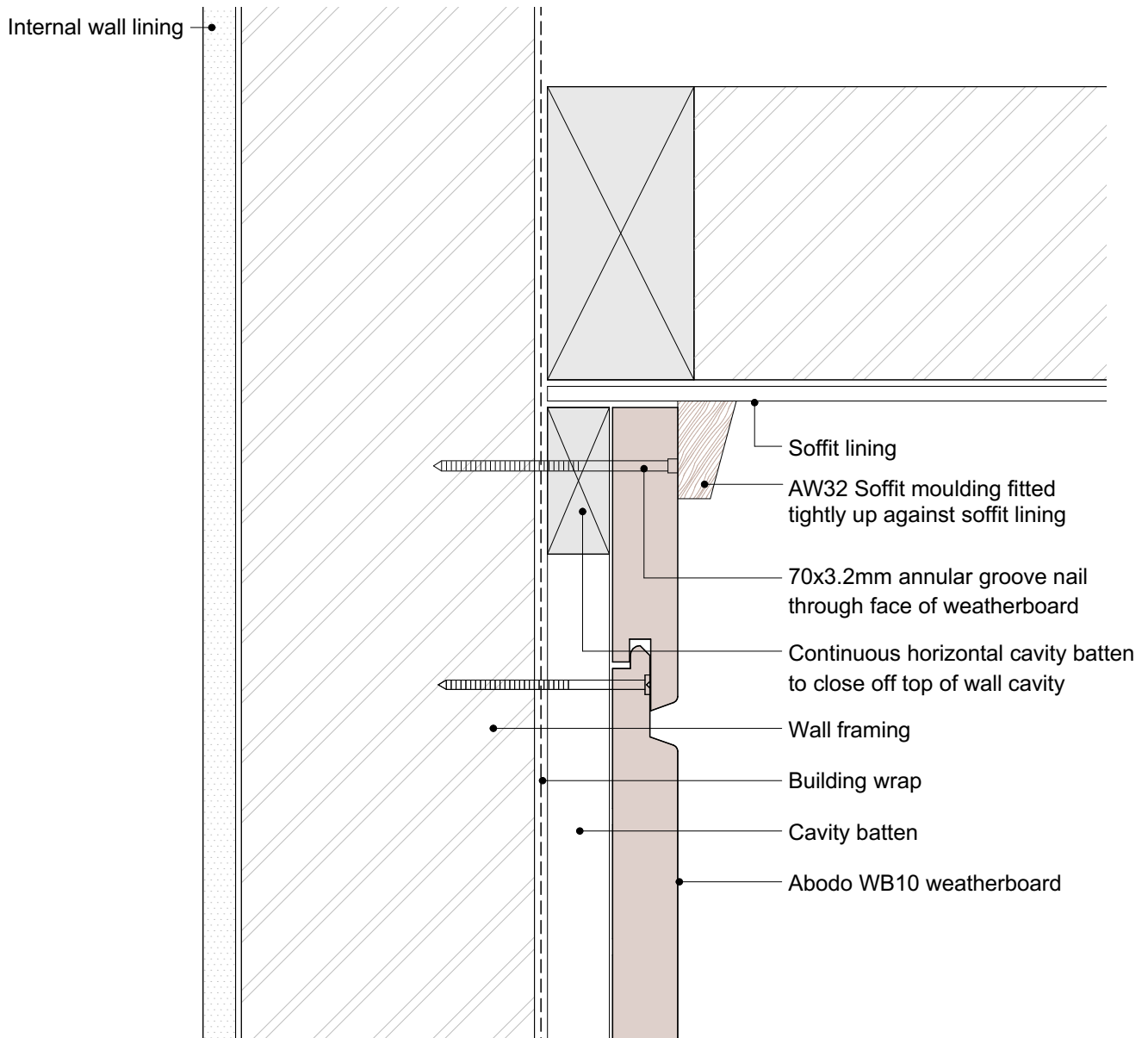
SHEET NUMBER

H.H.28

REVISION

01

1. Weatherboards must be coated with at least one coat all sides prior to fixing.
2. Fixing points must be pre-drilled minimum 1mm smaller than the fastener.
3. Cut ends and exposed timber must be sealed with an approved coating or end seal.



scale in millimetres

0 20 40 60 80 100



© Abodo Wood Ltd. 2020
info@abodo.co.nz
T +64 (9) 249 0100

SHEET TITLE

Top Of Wall - Flat Soffit

PROFILE

Vulcan WB10 Horizontal Weatherboard

SCALE: 1:2 @ A4

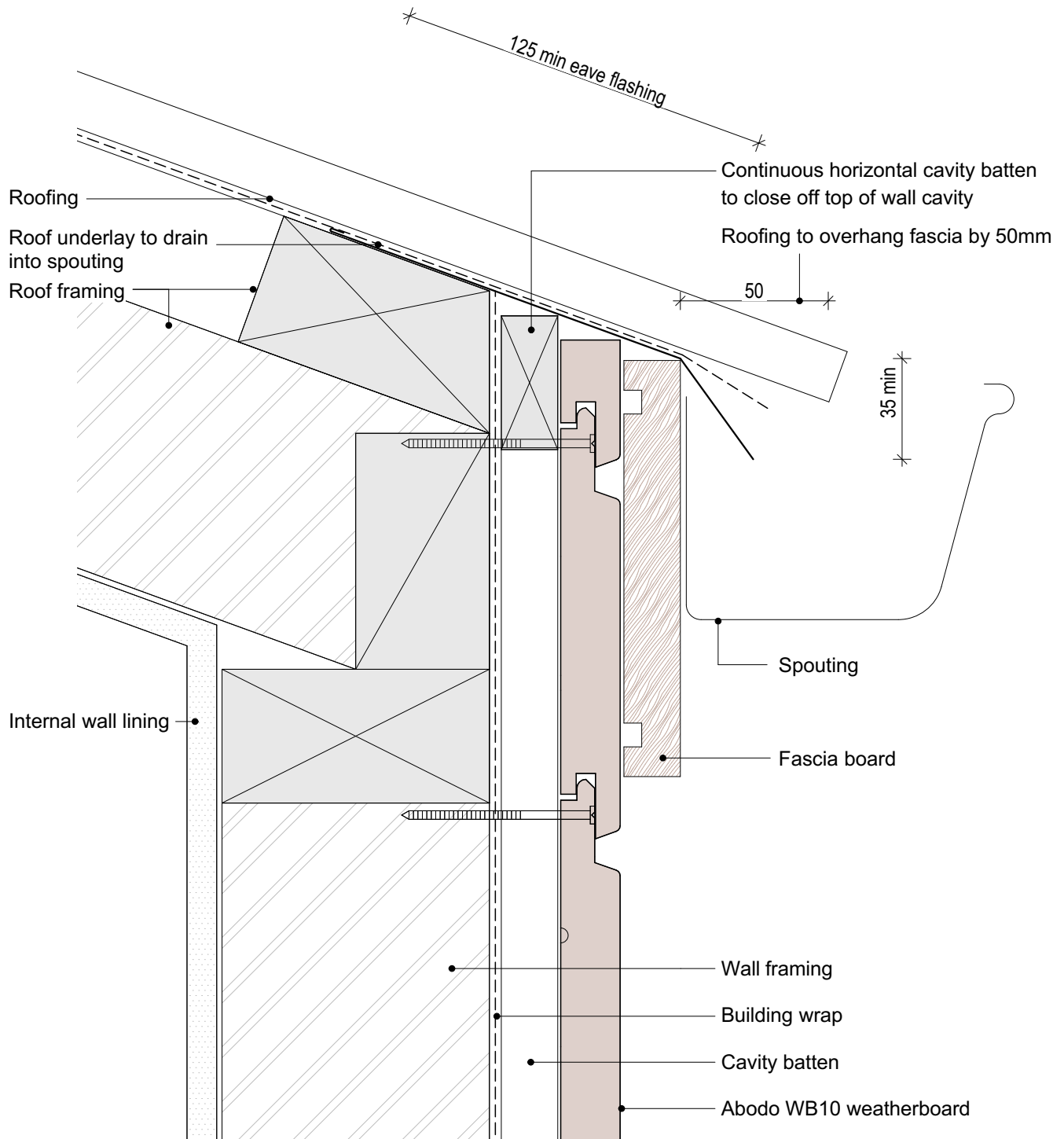
PRINT DATE: 01/04/2020

SHEET NUMBER REVISION

H.H.29 01

Abodo Wood Ltd.
62 Ascot Road, Mangere,
Auckland 2022, New Zealand

1. Weatherboards must be coated with at least one coat all sides prior to fixing.
2. Fixing points must be pre-drilled minimum 1mm smaller than the fastener.
3. Cut ends and exposed timber must be sealed with an approved coating or end seal.



© Abodo Wood Ltd. 2020
info@abodo.co.nz
T +64 (9) 249 0100

SHEET TITLE

Top Of Wall - No Soffit

PROFILE

Vulcan WB10 Horizontal Weatherboard

SCALE: 1:2 @ A4

PRINT DATE: 01/04/2020

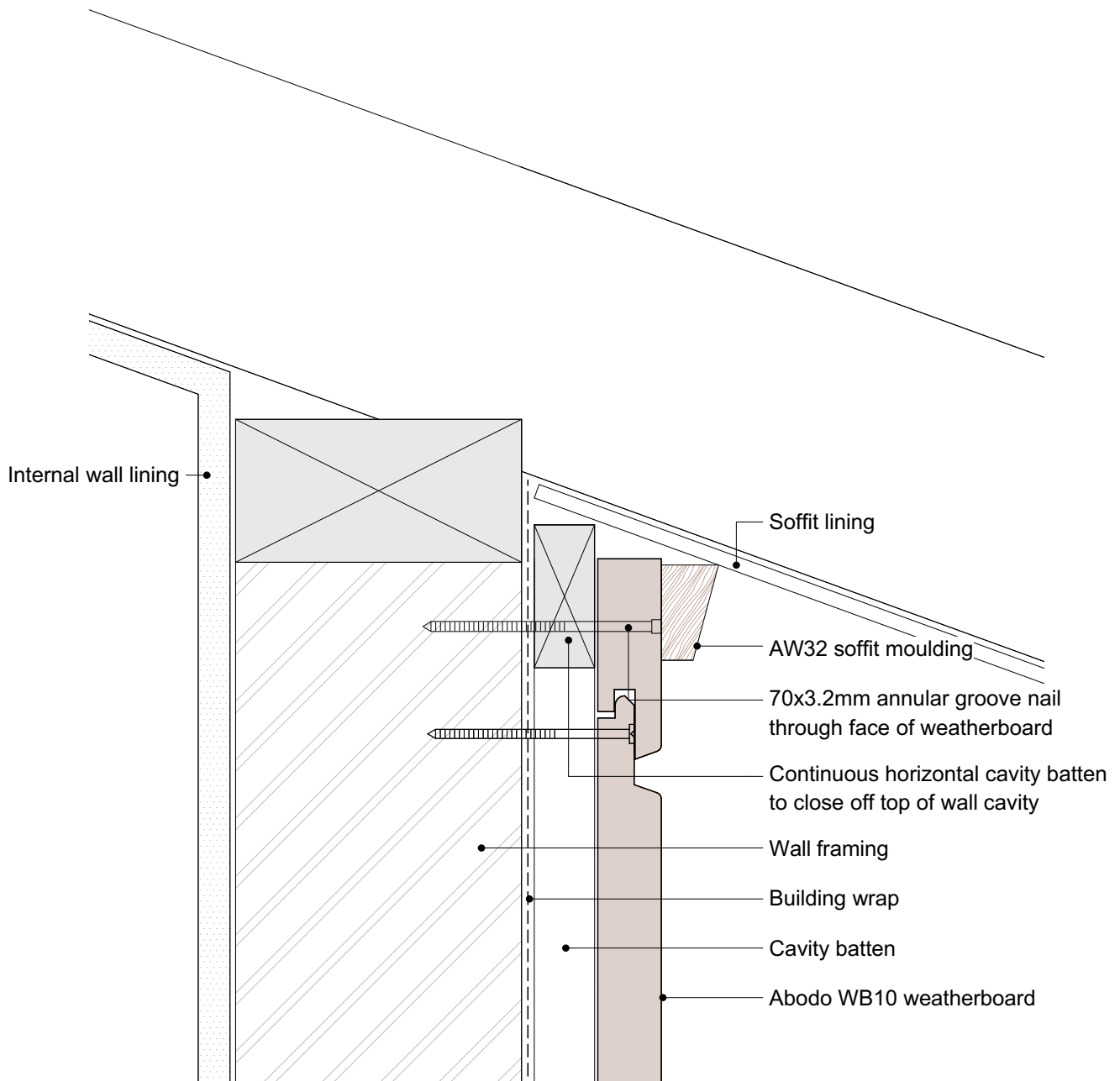
SHEET NUMBER

H.H.30

REVISION

01

1. Weatherboards must be coated with at least one coat all sides prior to fixing.
2. Fixing points must be pre-drilled minimum 1mm smaller than the fastener.
3. Cut ends and exposed timber must be sealed with an approved coating or end seal.



© Abodo Wood Ltd. 2020
info@abodo.co.nz
T +64 (9) 249 0100

SHEET TITLE

Top Of Wall - Slopping Soffit

PROFILE

Vulcan WB10 Horizontal Weatherboard

SCALE:

1:2 @ A4

PRINT
DATE:

01/04/2020

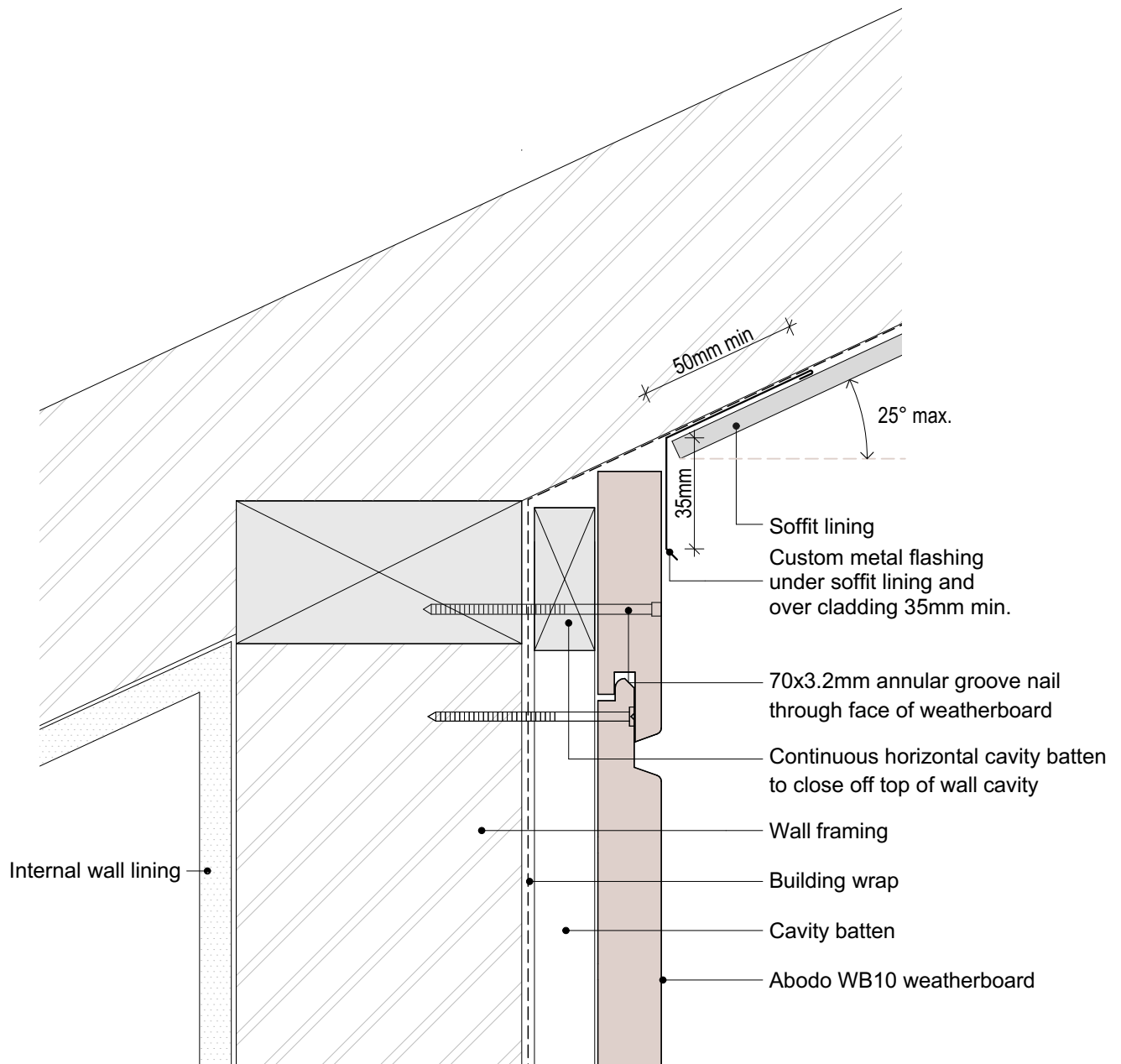
SHEET NUMBER

H.H.31

REVISION

01

1. Weatherboards must be coated with at least one coat all sides prior to fixing.
2. Fixing points must be pre-drilled minimum 1mm smaller than the fastener.
3. Cut ends and exposed timber must be sealed with an approved coating or end seal.



© Abodo Wood Ltd. 2020
info@abodo.co.nz
T +64 (9) 249 0100

SHEET TITLE

Top Of Wall - Raking Soffit

PROFILE

Vulcan WB10 Horizontal Weatherboard

SCALE:

1:2 @ A4

PRINT
DATE:

01/04/2020

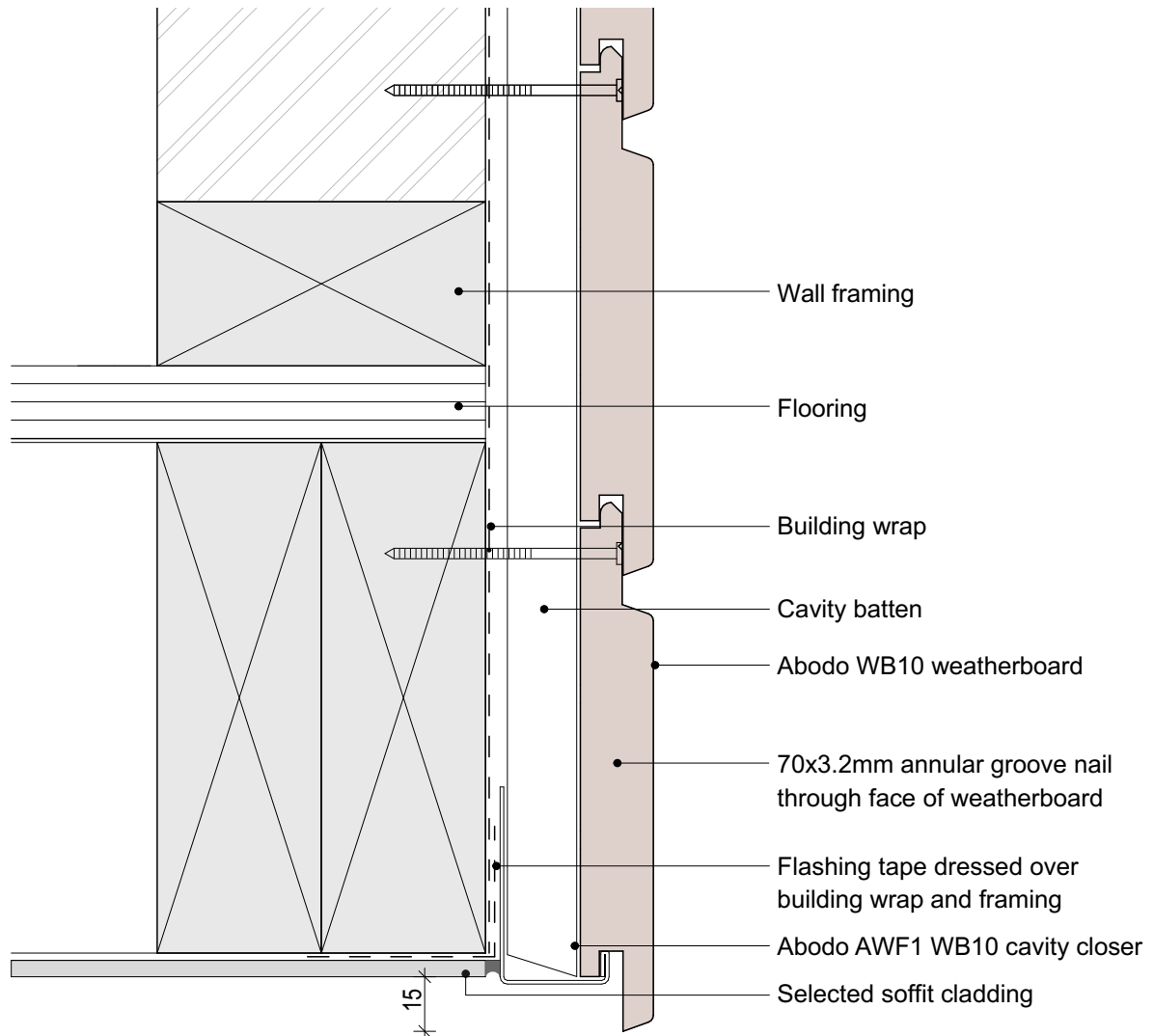
SHEET NUMBER

H.H.32

REVISION

01

1. Weatherboards must be coated with at least one coat all sides prior to fixing.
2. Fixing points must be pre-drilled minimum 1mm smaller than the fastener.
3. Cut ends and exposed timber must be sealed with an approved coating or end seal.



scale in millimetres
0 20 40 60 80 100



© Abodo Wood Ltd. 2020
info@abodo.co.nz
T +64 (9) 249 0100

SHEET TITLE

Soffit Detail

Abodo Wood Ltd.
62 Ascot Road, Mangere,
Auckland 2022, New Zealand

PROFILE

Vulcan WB10 Horizontal Weatherboard

SCALE:

1:2 @ A4

PRINT DATE:

01/04/2020

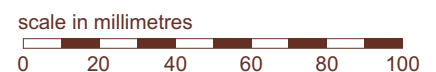
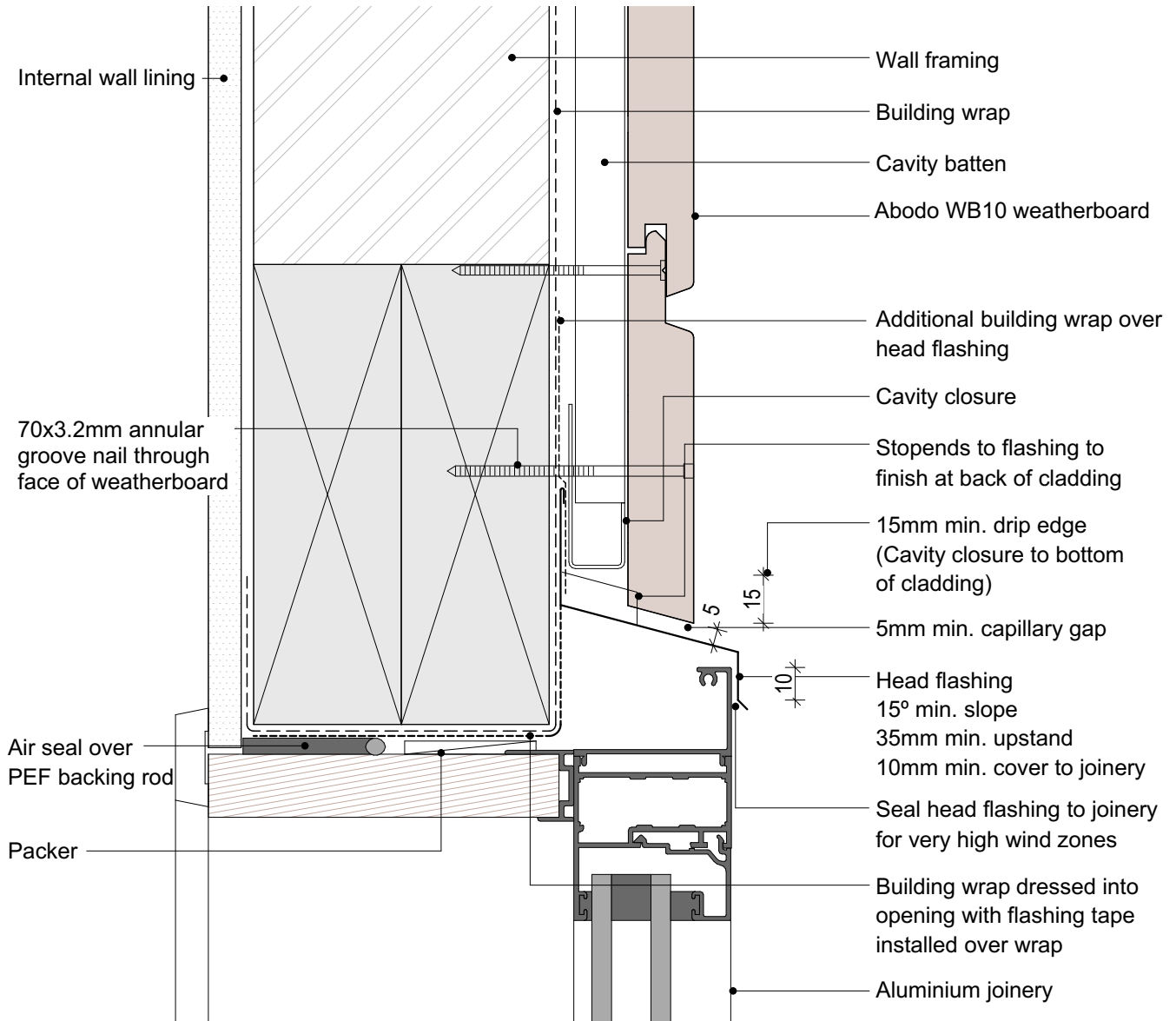
SHEET NUMBER

H.H.33

REVISION

01

1. Weatherboards must be coated with at least one coat all sides prior to fixing.
2. Fixing points must be pre-drilled minimum 1mm smaller than the fastener.
3. Cut ends and exposed timber must be sealed with an approved coating or end seal.



© Abodo Wood Ltd. 2020
info@abodo.co.nz
T +64 (9) 249 0100

SHEET TITLE

Window Head

PROFILE

Vulcan WB10 Horizontal Weatherboard

SCALE:

1:2 @ A4

PRINT DATE:

01/04/2020

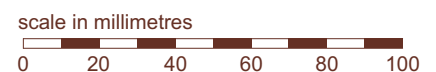
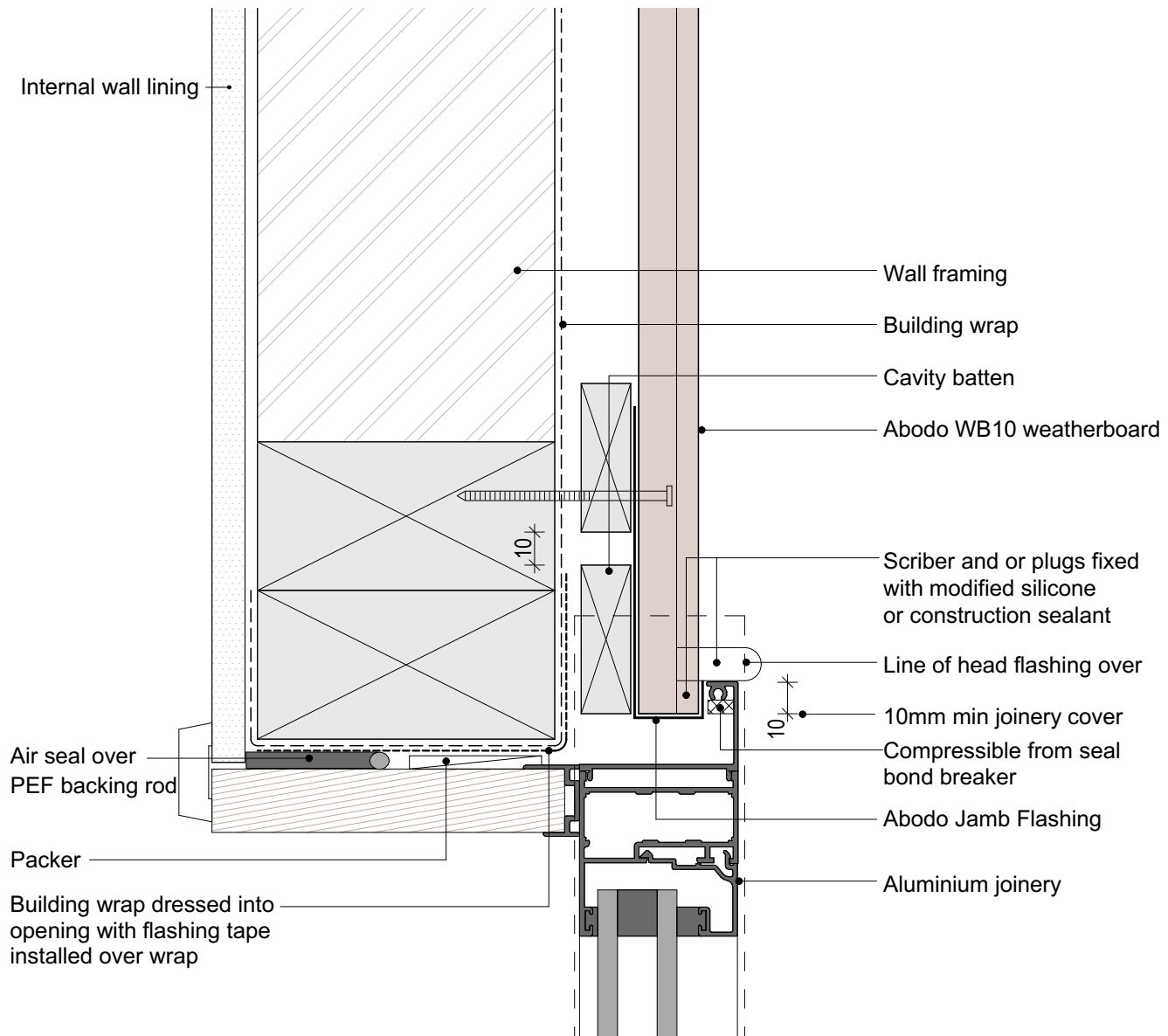
SHEET NUMBER

H.H.34

REVISION

01

1. Weatherboards must be coated with at least one coat all sides prior to fixing.
2. Fixing points must be pre-drilled minimum 1mm smaller than the fastener.
3. Cut ends and exposed timber must be sealed with an approved coating or end seal.



© Abodo Wood Ltd. 2020
info@abodo.co.nz
T +64 (9) 249 0100

SHEET TITLE

Window Jamb

Abodo Wood Ltd.
62 Ascot Road, Mangere,
Auckland 2022, New Zealand

PROFILE

Vulcan WB10 Horizontal Weatherboard

SCALE:

1:2 @ A4

PRINT DATE:

01/04/2020

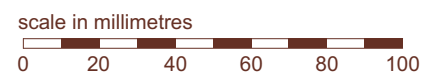
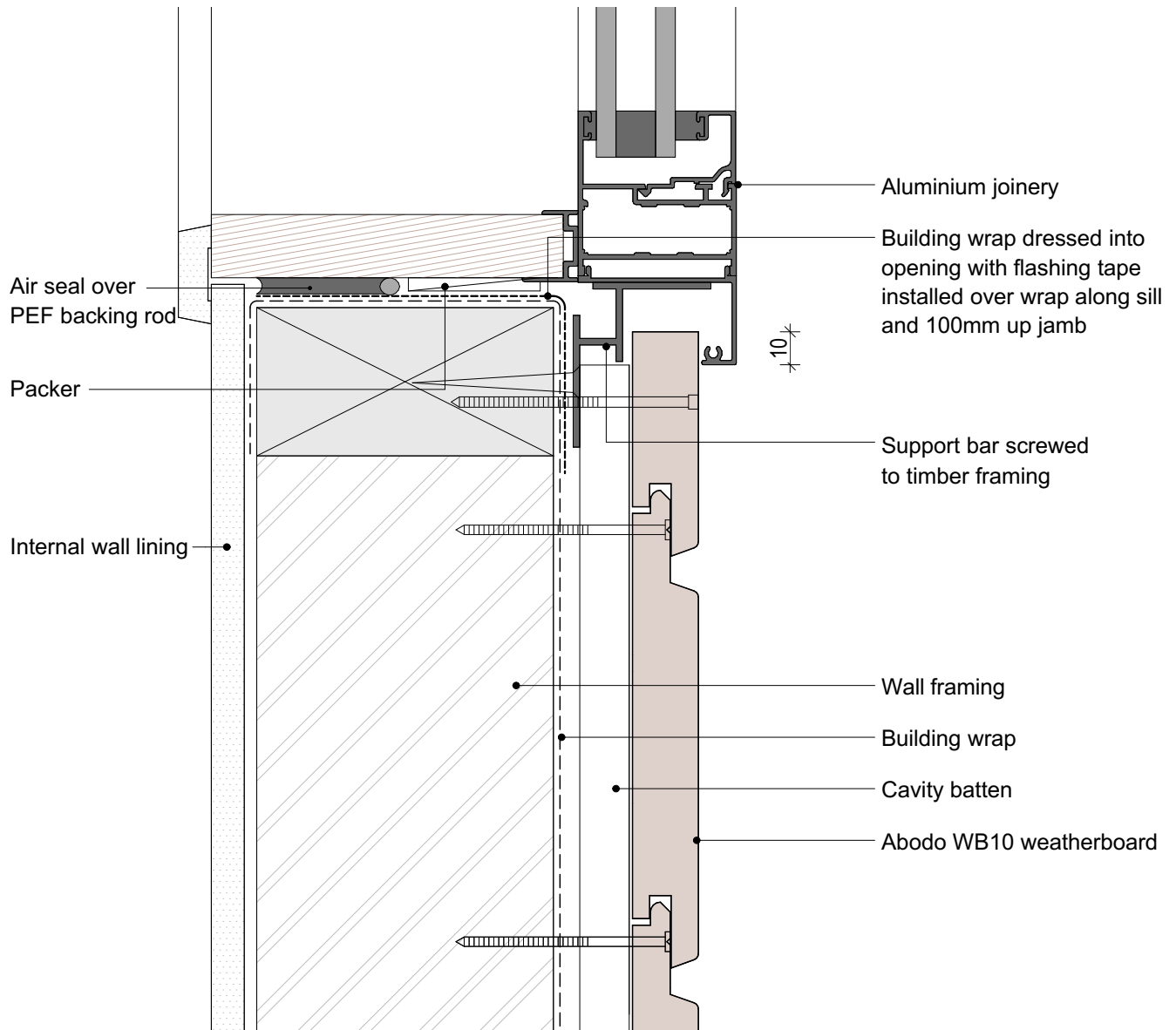
SHEET NUMBER

H.H.35

REVISION

01

1. Weatherboards must be coated with at least one coat all sides prior to fixing.
2. Fixing points must be pre-drilled minimum 1mm smaller than the fastener.
3. Cut ends and exposed timber must be sealed with an approved coating or end seal.



© Abodo Wood Ltd. 2020
info@abodo.co.nz
T +64 (9) 249 0100

SHEET TITLE

Window Sill

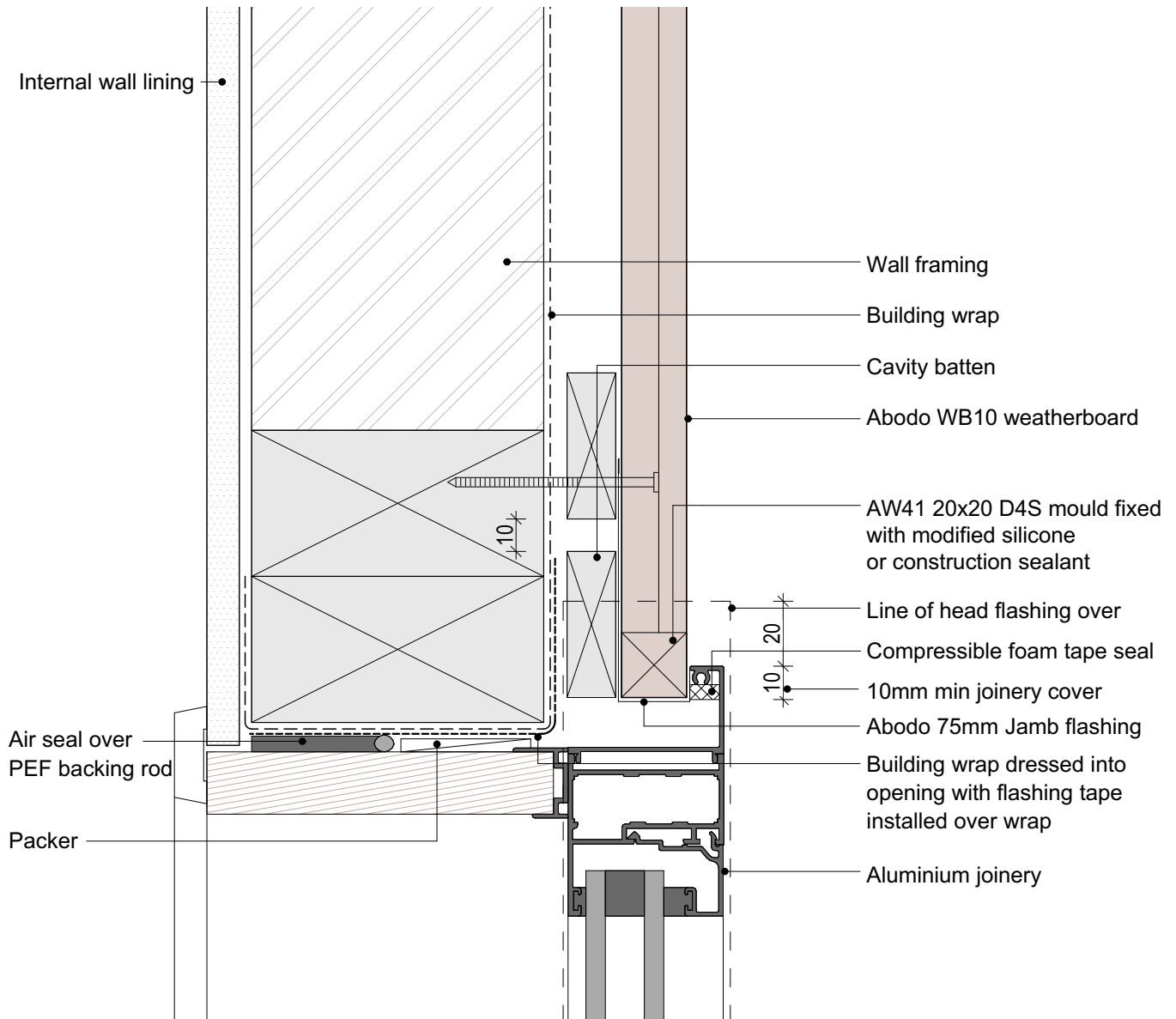
PROFILE

Vulcan WB10 Horizontal Weatherboard

SCALE: 1:2 @ A4
PRINT DATE: 01/04/2020

SHEET NUMBER REVISION
H.H.36 01

1. Weatherboards must be coated with at least one coat all sides prior to fixing.
2. Fixing points must be pre-drilled minimum 1mm smaller than the fastener.
3. Cut ends and exposed timber must be sealed with an approved coating or end seal.



scale in millimetres

0 20 40 60 80 100



© Abodo Wood Ltd. 2020
info@abodo.co.nz
T +64 (9) 249 0100

SHEET TITLE

Window Jamb - Option 2

PROFILE

Vulcan WB10 Horizontal Weatherboard

SCALE:

1:2 @ A4

PRINT DATE:

01/04/2020

SHEET NUMBER

H.H.37

REVISION

01