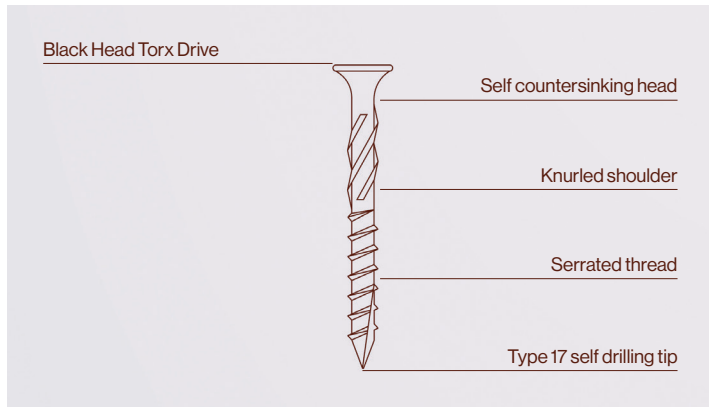


Cladding Screw



Features

Overview

Abodo's Cladding Screw is the latest design in exterior wood screw technology, allowing easy fixing, superior hold and maximum durability. The black painted head allows for discrete aesthetic appearance.

Uses: Exterior or interior timber cladding, screening, panels.

Size: 4.0mm x 45mm or 4.5mm x 65mm.

Specification: Stainless Steel 304 (A3).

Benefits:

- Torx drive head gives stronger driver hold and reduces blow out during installation.
- Black painted head offers aesthetic flexibility in exposed head situations.
- Self countersinking head eliminates need for pre-drill countersink and gives a superior clean finish.
- Knurled shoulder expels dust out of the drive hole for easier application.
- Serrated thread gives cleaner cutting action and enhanced driving power.
- Type 17 tip makes the screw self-drilling into softwood and many other timbers, and that means reduced installation time.

Application:

- Use the torx drive bit included in each box.
- Drive screws with an electric drill, set to screw driving mode or an electric screw driver at slow speed.
- Do not use an impact driver as this will over drive the screw.
- Adjust clutch so that the screw head sits flush the timber surface.
- Ensure a minimum of 30mm penetration of screw into timber substrate.

Packaging: Cardboard boxes of 100 pieces each including one torx driver bit. Outer cartons containing 20 boxes.

Cladding Screw

- Packer Cavity Battens:
- 4.5x60mm screws may be used for direct fixing or with non-structural packer cavity battens with minimum 30mm fixing penetration into stud.
 - 4.0x45mm screws are designed for direct fixing or use with structural cavity battens as follows:
- Structural Cavity Battens:
- 20mm H3.2 timber cavity battens must be structurally fixed to studs/nogs with 60x2.8mm stainless steel flat head ring shank nails or 50mm stainless steel screws staggered 12mm either side of centre line at max 300mm centres.
 - 45mm H3.2 timber cavity battens must be structurally fixed to studs/nogs with 90x3.15mm stainless steel flat head ring shank nails or 90mm stainless steel screws, or if fixing to masonry use M6 x 85mm split drive masonry anchor (Ramset or equivalent), staggered 12mm either side of centre line at max 600mm centres.

Fixing Details:

WB10/WB12 Structural Cavity Batten

Fig 1 – 20x45 Structural Cavity Batten

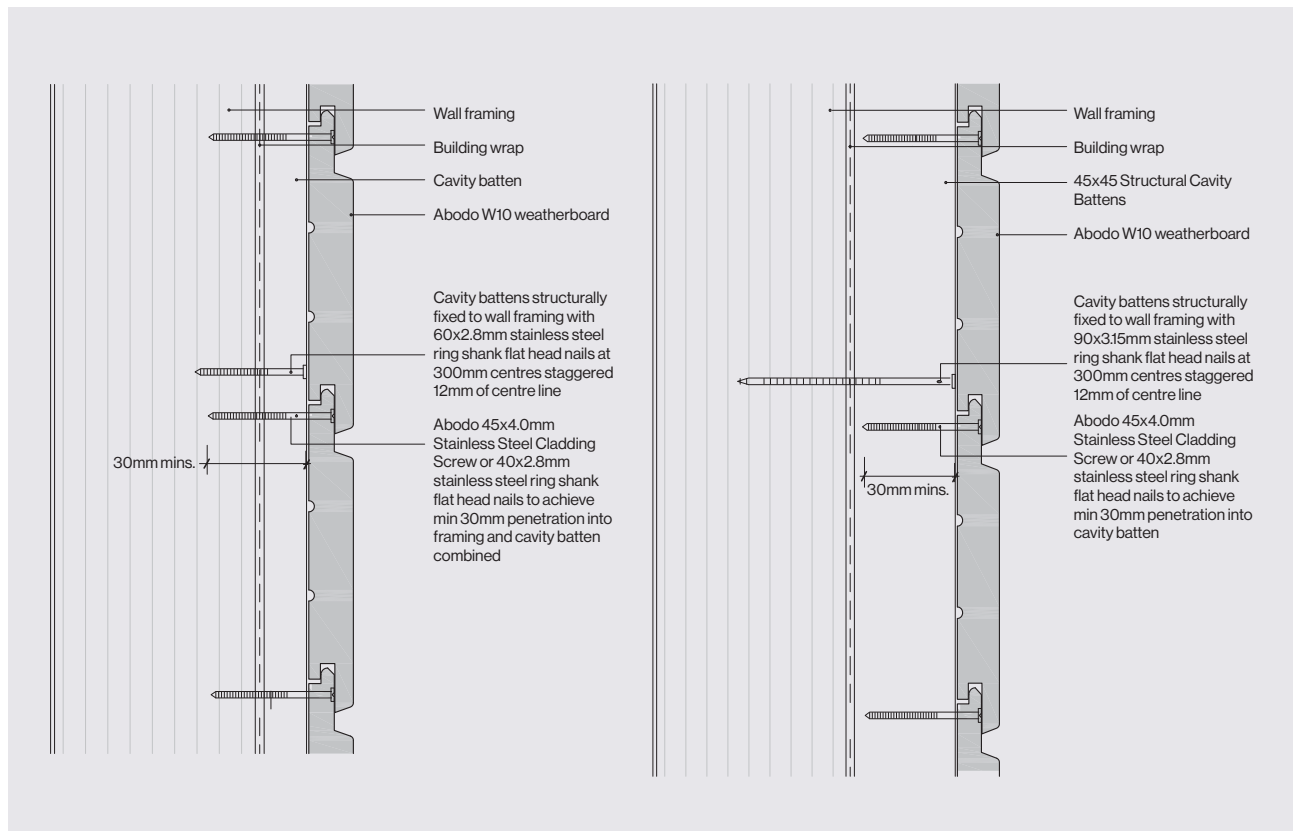


Fig 2 – 45x45 Structural Cavity Batten

P +64 9 249 0100
E info@abodo.co.nz
W abodo.co.nz