



## Vulcan® Screening – Vertical Grain



### ○ Overview

Vulcan Screening is created from thermally modified New Zealand plantation timber and engineered with a vertical grain construction for superior weathering characteristics.

The thermal modification process combined with lamination means Vulcan Screening has enhanced stability, reduced resin content, is a beautiful homogenous brown colour, and is naturally durable so does not require any chemical preservatives.

An excellent choice for appearance grade applications such as joinery, pergola, screening, brise soleil, ballustrading.

### ○ Wood Species

Thermally Modified Radiata Pine (Pinus Radiata).

### ○ Lengths

2.4-4.8m.

Lengths are subject to availability at order time.

Available finger jointed in fixed lengths on a made to order basis – please check lead times with local distributor.

Random length orders may contain lengths 2.4m and longer or fixed lengths at Abodo's option.

### ○ Suggested Sizes

Finished dimensions	Finished dimensions	Finished dimensions
Boards (mm)	Beams (mm)	Posts (mm)
42 x 18	65 x 42	42 x 42
65 x 18	88 x 42	65 x 65
88 x 18	138 x 42	88 x 88
120 x 18	180 x 42	138 x 138
138 x 18	88 x 65	180 x 180
180 x 18	138 x 65	
42 x 25	180 x 65	
65 x 25	138 x 88	
88 x 25	180 x 88	
138 x 25		
180 x 25		
65 x 32		
88 x 32		
138 x 32		
180 x 32		

Supplied as standard with fine bandsawn finish four sides. Bandsawn dimension may vary up to +/-2mm. Sizes are subject to minimum order volumes and lead time.

Custom laminated sizes >180mm up to 290mm width are subject to prior approval by Abodo, minimum order volumes and lead time.



## Vulcan® Screening – Vertical Grain

### ○ Colours

Colours presented are in Abodo's Protector coating and are indicative only. Colour may change/fade as a part of the natural weathering process.



Some colours may not be stocked in the UK, please enquire for availability and lead time prior to specification. Refer to the Technical Data Sheet – Protector for more information.

### Product specifications

- Name Abodo Vulcan Screening.
- Quality **Select Grade/Visually selected to achieve BS1186:3 1990 Grade CHS and BS EN942 Grade J5 for use in joinery applications. Equal to CE EN14915 Grade A and in accordance with BS EN942 Grade J5. Front face and edges virtually free of any defects but with one edge knot and one small face defect allowed per piece in 20% of boards only. Back side with some defects allowed.**
- Substrate Colour Chocolate Brown. (Timber will weather to grey unless a pigmented coating is applied and maintained).
- Finish Bandsawn faces as standard (smooth dressed subject to confirmation by Abodo). Bandsawn dimension may vary up to +/-2mm (some variation in the visual appearance of the bandsawn finish can be expected).
- Durability Durability Class 1 (EN350-1).
- Intended Use Intended for above ground use in residential and light commercial buildings.
- Serviceable Life 30 years or more when maintained according to manufacturer's recommendations.
- Warranty 25 years against fungal decay (subject to terms and conditions).
- Moisture Content Approx. 7% MC (+/-2%) at time of dispatch.
- Construction Laminated with vertical grain orientation.
- Glue Exterior polyurethane adhesive – VOC, solvent and formaldehyde free. Complies with EN 15425.



# Vulcan® Screening – Vertical Grain

○ Expected Dimensional Change in Structure	Width expansion	approx 2%
	Thickness	approx 3%
	Length expansion	approx 0.25%

(From 7%MC to fibre saturation – variation will occur between boards).

○ Average Dry Density ~420 kg/m3.

○ Fire Euroclass D-S1-d0. Can be fire treated to Euroclass B-s2-d0 (s2 Smoke Production – d0 Flaming Droplets). BS EN 13823 & BS EN 11925-2 Single Burning Item Equivalent to UK “Class O” BS 476: Part 6 & BS 476: Part 7.

○ Hardness Low (2.5kN Janka).

○ Thermal Properties ~0.095 W/(mK).

○ pH (Indicative) ~3.9.

○ Compatibility Vulcan has low corrosiveness on most metals (separation required to zinc) and can be placed in contact with most building materials cross linking PVA, PU, MUF glues and RF resins can be used. Always check compatibility with glue manufacturer and test prior to use.

○ Coating Vulcan will take most stains, penetrating oils and paints well, though up-take of coating is generally higher than normal. At least one coat must be applied all sides including back face, edges and ends before fixing. At least two coats must be applied to the front face and edges with Abodo Protector or other approved proprietary wood coating.

For interior applications film forming or high solids coatings e.g. hard wax oil, acrylic or polyurethane must be used only. Coating can be applied to faces only. Please contact Abodo for further advice on specific application.

○ Certification Forest Stewardship Council® (FSC®) Certified FSC MIX, FSC-C010962, SGS-COC-004944.

○ Characteristic Strength/Stiffness	Characteristic Strengths (MPa)					Elastic Moduli (GPa)	
	Gl grade rigidity	Bending (Mor)	Tension parallel to grain	Shear in beam	Compression parallel to grain	Short modulus of elasticity parallel to end grain (Moe)	Short duration modulus for beams
	8	20.50	9.60	-	38.50	10.40	-

- Product Handling**
- Timber and accessories must be kept clean, dry well ventilated and out of the weather prior to installation.
  - Timber must be stored horizontally on bearers at least 150mm off the ground in a well ventilated area.
  - Extra care must be taken during installation so as not to damage the factory finish of the boards.
  - Wear dust mask, eye protection when cutting timber.



## Vulcan® Screening – Vertical Grain

### Installation

- For exterior appearance applications, high quality stainless steel fixings are recommended. Quality Hot Dip Galvanised may be used in non-appearance applications. Stainless steel 316 (A4) fixings should be used in areas near the sea.

Note: Silicone bronze/copper fixings can be subject to oxidation during weathering, resulting in discolouration and weeping around fixing head.

- Fixings at ends of boards must be at least 25mm from edge, and must be pre-drilled before applying fastener.
- Where possible screening (especially square profiles) should be orientated so that vertical grain pattern is exposed to the prevailing weather. This can be checked by looking at end section.

Vertical grain oriented towards the weather



Weather-exposed face



Weather-exposed face

Note: The above is an overview only. Installers should refer to specific design information on the construction specification for more detail.

- All end grains and notches must be sealed using Abodo's Protector End Seal or equivalent water repellent end grain preservative. Top exposed end grains of screening must have 15 degree angle applied to shed water. In heavily exposed situations Abodo metal caps should be considered to protect end grains at tops of battens.
- Vulcan Screening should generally be installed minimum 100mm above paved surface or 175mm above un-paved surfaces. Base of posts must finish minimum 35mm above paved surface and be sealed to prevent moisture ingress.
- Smooth dressed timber must be thoroughly sanded with 120 grit sand paper prior to application of coating. Bandsawn face timber does not require sanding.
- For exterior applications at least one coat of Protector or approved proprietary wood stain must be applied to all sides prior to installation and then a further one or two coats applied once boards are fixed in place according to manufacturer's instructions.
- For interior applications timber may be left uncoated or if coated, film forming or high solids coatings e.g. hard wax oil, acrylic or polyurethane must be used only. Coating can be applied to faces only.

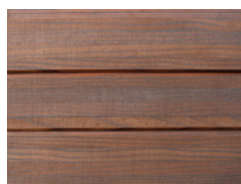


## Vulcan® Screening – Vertical Grain

### Maintenance

- Wash down every 6-12 months with gentle detergent, warm water and soft brush.
- When dry if possible it is recommended to apply a further coat of oil or stain after approx 12 months of weathering.
- Make a maintenance check every two summers. When timber is dry.
- For heavily soiled or mouldy areas use an oxygenating cleaner, active mouldicide and re-coat with penetrating oil when dry.
- Re-coat every 3-5 years or as required to maintain colour and integrity of coating when timber is dry. Re-coat period may be longer or shorter depending on climatic conditions and/or positioning of timber to the sun.

### ○ Lightening of the Timber



Vulcan Teak  
As delivered

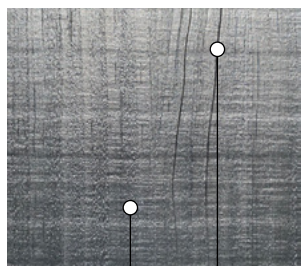


Vulcan Teak  
Weathered exterior  
install

We cannot guarantee against wear or color changes to any products which result from weather, sun, wind and/or the natural aging process of the wood.

### ○ Surface Checking

- Checking (cracks) may be observed on the face and ends of Vulcan timber. Checks are acceptable to install. Checking may become more apparent as the material weathers naturally in place. Fibre pull at laminated glue lines is also possible. These are not defects and are considered a natural part of this wood product. Maintenance with a coating and thorough sealing of end grains with wax sealer will improve long term weathering characteristics.



Laminated  
glue seams

Face  
check



End split/  
Glue pull