

Vulcan Rhombus Clip



Overview

Vulcan is created from thermally modified renewable New Zealand plantation timber. The thermal modification process means Vulcan Screening has enhanced stability, reduced resin content, is a beautiful homogeneous brown colour, and is naturally durable so does not require any chemical preservatives.

An innovative clip system gives clean aesthetic with no visible face fixings.

Available factory finished in a range of Protector Oil - Abodo's high performance plant based exterior oil.

Wood species: Thermally Modified Radiata Pine (Pinus Radiata).

Profiles (horizontal):



RHBC2: 68 x 26 (68mm cover)



RHBC2: 90 x 26 (90mm cover)

Can be supplied with either bandsawn or optional brushed face.

Lengths: 3.6 - 4.8m*

*Product is supplied as standard in mixed lengths or otherwise lengths at Abodo's option. Specified fixed lengths may be available but are subject to conditions including minimum quantity, price premium and availability. Please check with Abodo prior to placement of order.

Colours:

Colours presented are in Protector Oil and are indicative only. Colour may change/fade as a part of the natural weathering process. Protector Oil is suitable for exterior application only. For internal application please consult with Abodo.



Vulcan Nero

Vulcan Ebony

Vulcan Graphite

Vulcan Walnut

Vulcan Teak

Vulcan Natural

Vulcan Straw

Vulcan Patina

Vulcan White

Vulcan Sioux
(Weathered 1yr)

*Colours are indicative only.

Vulcan Rhombus Clip

Product specifications

Name:	Abodo Vulcan Rhombus Clip.
Quality:	Select Grade /Front face and edges virtually free of any defects but with one edge knot and one small face defect allowed per piece in 20% of boards only. Back side with some defects allowed.
Substrate colour:	Chocolate brown. (Timber will weather to grey unless a pigmented coating is applied and maintained).
Finish (Rhombus Clip):	Fine bandsawn face (some variation in the visual appearance of the bandsawn finish can be expected) or Brushed.
Durability:	Thermally modified – 230 degrees schedule. Field tested at SCION, Rotorua. Approved for uses described in NZS3602:2003 Table 2A 'Requirements for wood-based building to achieve a 15 year durability performance Members exposed to exterior weather conditions and dampness'. Durability Class 1 (EN350-1), Class 2 above ground (AS5604). Available optionally treated for termite-prone areas.
Insect attack:	Thermally modified pine is resistant to many wood boring insects but is not resistant to termites. Preservative treatment is required for termite zones.
Intended use:	Intended for above ground use in residential and light commercial buildings, facade screening, fencing, internal screening, feature walls, ceilings.
Serviceable life:	30 years or more when maintained according to manufacturer's recommendations. Warranty 15 years against fungal decay (subject to terms and conditions).
Moisture content:	Approx. 7% MC (+/-2%) at time of despatch.
Fire (interior):	Group 3 or Group 1S with application of fire retardant coating.
Expected dimensional change in structure:	Width expansion approx 2.5%, length expansion approx 0.25%, thickness expansion approx 2.0% (from 7%MC to fibre saturation -variation will occur between boards).
Density:	420kg/m ³ .
Hardness:	Low (2.5kN Janka).
Indicative pH:	3.9.
Thermal properties:	-0.095 W/ (mK).
Compatibility:	Vulcan has little or no corrosiveness on most metals and can be placed in contact with most building materials. Care must be taken to separate timber from zinc. Normal cross-linked PVA, PU, MUF glues and RF resins can be used.
Coating:	Vulcan will take most stains, penetrating oils and paints well, though up-take of coating is generally higher than normal. At least one coat must be applied all sides including back face, and ends, and at least two coats to the front face and edges with Protector Oil, Resene Woodsman or other approved proprietary wood stain. For interior applications specialty interior coatings are recommended - please contact Abodo for further information. Available factory pre-coated.
Certification:	FSC®-certified mixed, No.: SGS-COC-004944. Declare Certified - Red List Free.

Vulcan Rhombus Clip

Product handling

- Timber and accessories must be kept clean dry, under cover and out of the weather prior to installation.
- Timber must be stored horizontally on bearers at least 100mm off the ground.
- Extra care must be taken during installation so as not to damage the factory finish of the boards.
- Wear dust mask, eye protection when cutting timber. Wear gloves when handling timber.
- Untreated timber off cuts may be burnt, mulched or disposed of in land fill.

Fixing overview

- Fix screening over waterproof substrate in conformance with NZBC E2/AS1.
- Fix screening to minimum 45x45mm H3.2 structural timber cavity battens spaced at max 800mm centres.
- Horizontal cavity battens should be beveled to allow water run-off in service.
- Structurally fix cavity battens to studs/nogs at max 600mm centres with 90x3.15mm stainless steel flat head ring shank nails or 90mm stainless steel screws, or if fixing to masonry use M10x90mm concrete screws (Ramset or equivalent), with fixings staggered 12mm either side of centre line.
- Screening may be fixed either vertically or horizontally.
- Fix screening with Abodo Rhombus Clip and screw ensuring a minimum of 30mm screw penetration into cavity batten.
- Fix first row of clips using a plumb line making sure they are level and in a straight line.
- Vertical screening must have a screw secret fixed at 45 degree angle through the tongue of each board at both top and base of wall, in order to prevent slipping of boards.
- Horizontal screening must have screws secret fixed at 45 degree angle through top edge of the final board at top of wall to hold it in place.
- All cut ends and notches must be sealed with penetrating oil or approved end sealant.
- Joins between board ends must be made over cavity battens only, with one clip placed either side of the join, and allowing a 2mm gap.
- Apply cavity closer as necessary to base of wall to stop movement of vermin into cavity.
- Cladding must finish 100mm above paved surface or 175mm above unpaved surfaces.
- Use Abodo finishing mouldings backed by hemmed corrosion resistant internal flashings as required, corners, windows, doors and where cladding meets soffit. Fix mouldings with stainless steel screws at max 450mm centres.
- At least one coat of Protector oil or proprietary specified wood stain must be applied to all sides and ends prior to installation and then a further one or two coats applied once boards are fixed in place according to manufacturer's instructions.

Vulcan Rhombus Clip

Fixing overview

Vertical Screening

Fig 1 - Fixing Detail

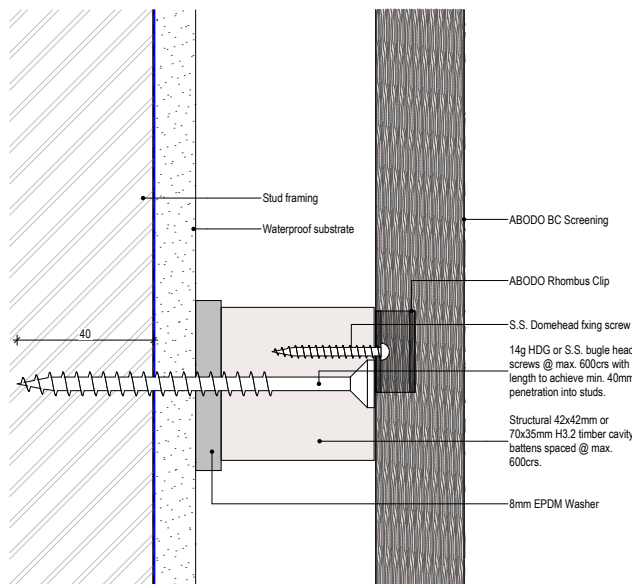


Fig 2 - External Corner

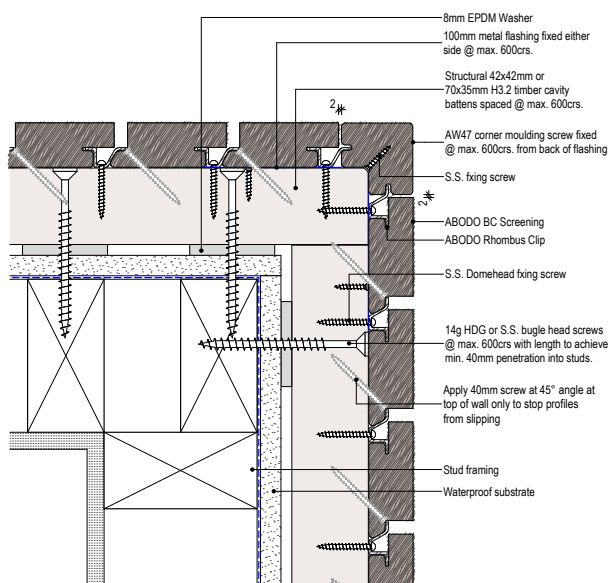
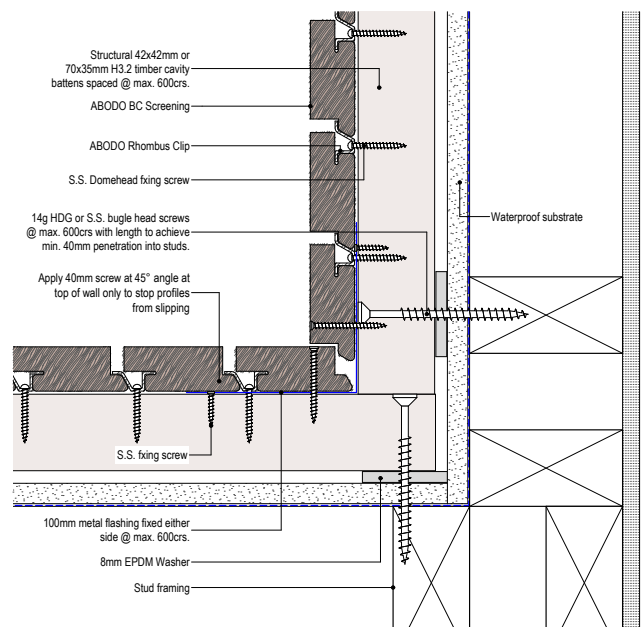


Fig 3 - Internal Corner



Vulcan Rhombus Clip

Fixing overview

Horizontal Screening

Fig 1 - Fixing Detail

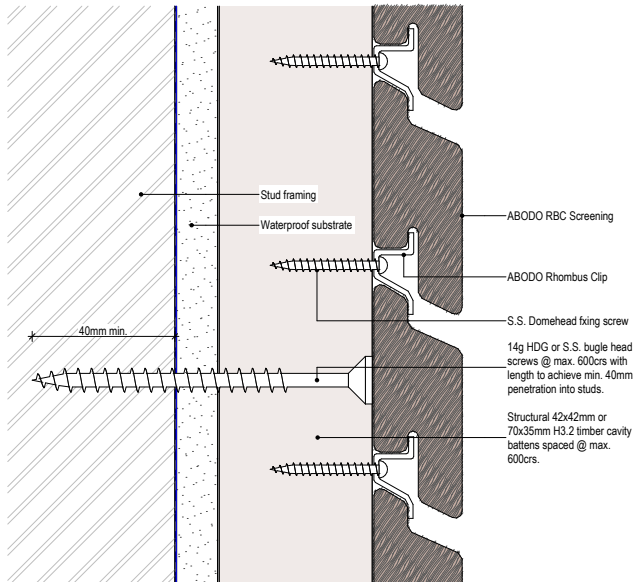


Fig 2 - External Corner

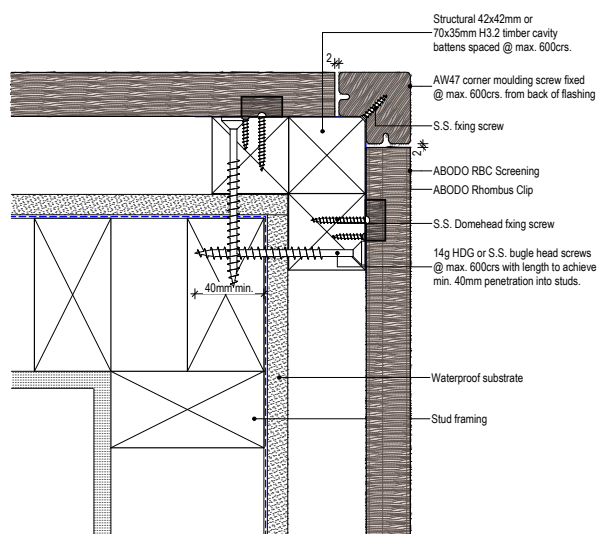
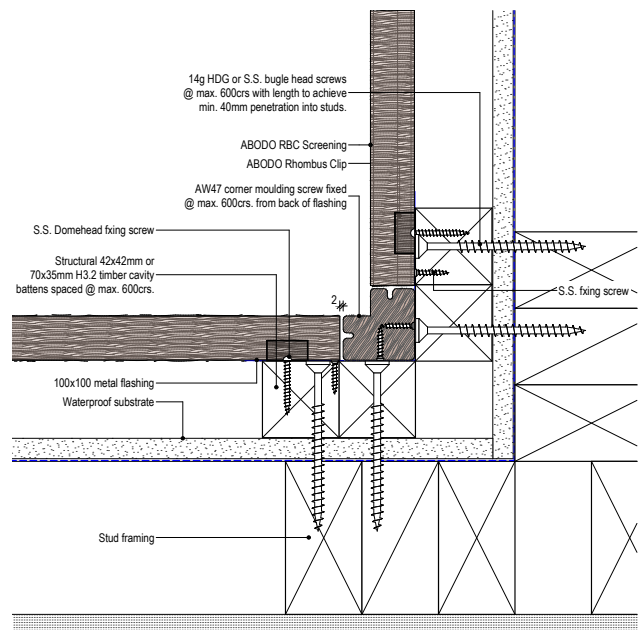


Fig 3- Internal Corner

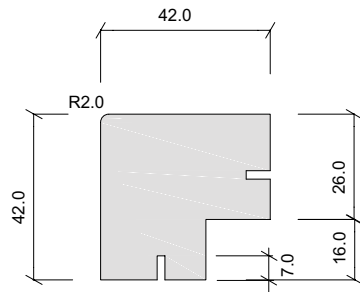


Vulcan Rhombus Clip

Maintenance

- Wash down every 12 months with gentle detergent, warm water and soft brush. High pressure waterblasting is not permitted.
- If possible it is recommended to apply a further coat of oil or stain after approx 12 months of weathering.
- Make a maintenance check every two summers. Check all screening, junctions, flashings, mouldings and replace or remediate as required to maintain weather tightness of the cladding system.
- Re-coat every 2-3 years or as required to maintain colour and integrity of coating. Re-coat period may be longer or shorter depending on climatic conditions and/ or positioning of cladding to the sun. Surface cracking can happen in flat sawn timber.
- For heavily soiled or mouldy areas use Rejuvenator or similar oxygenating cleaner, active mouldicide and recoat with penetrating oil.

Mouldings

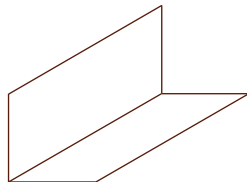
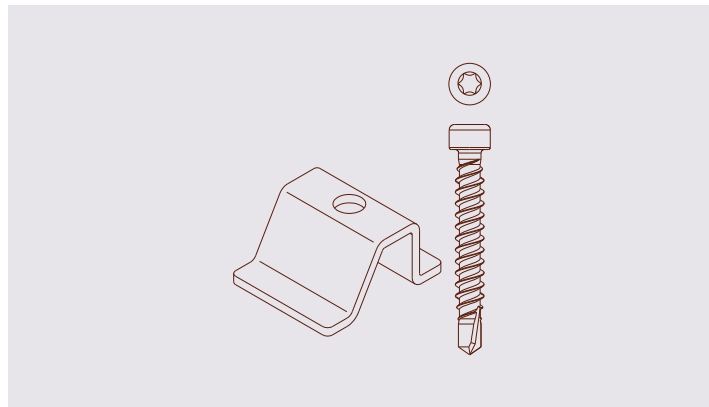


AW47 Ext/Int Corner Mould

Accessories

Abodo Rhombus Clip:

4.2 x 32mm screw stainless steel 316 powder coat black:



AWF2 Abodo Unhemmed
Corner Flashings
S/Steel 100x100 mm/
120x120mm 3m

P +64 9 249 0100
E info@abodo.co.nz
W abodo.co.nz